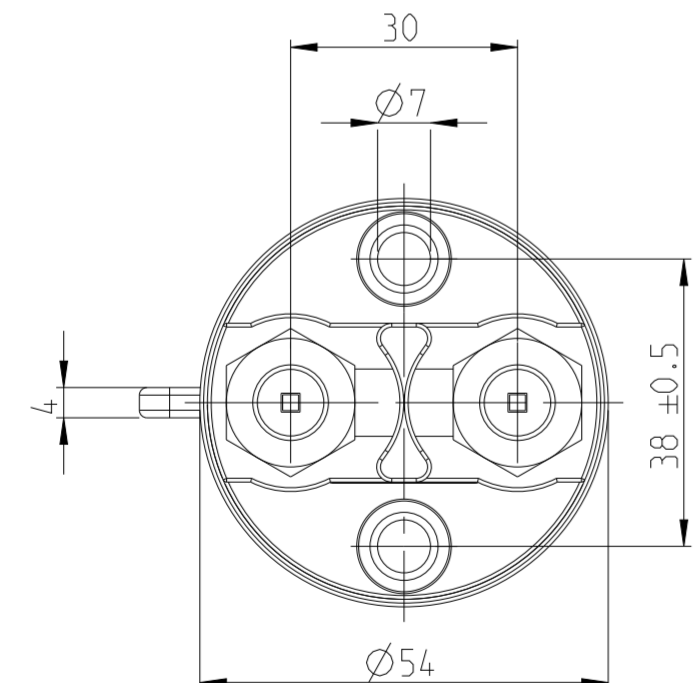
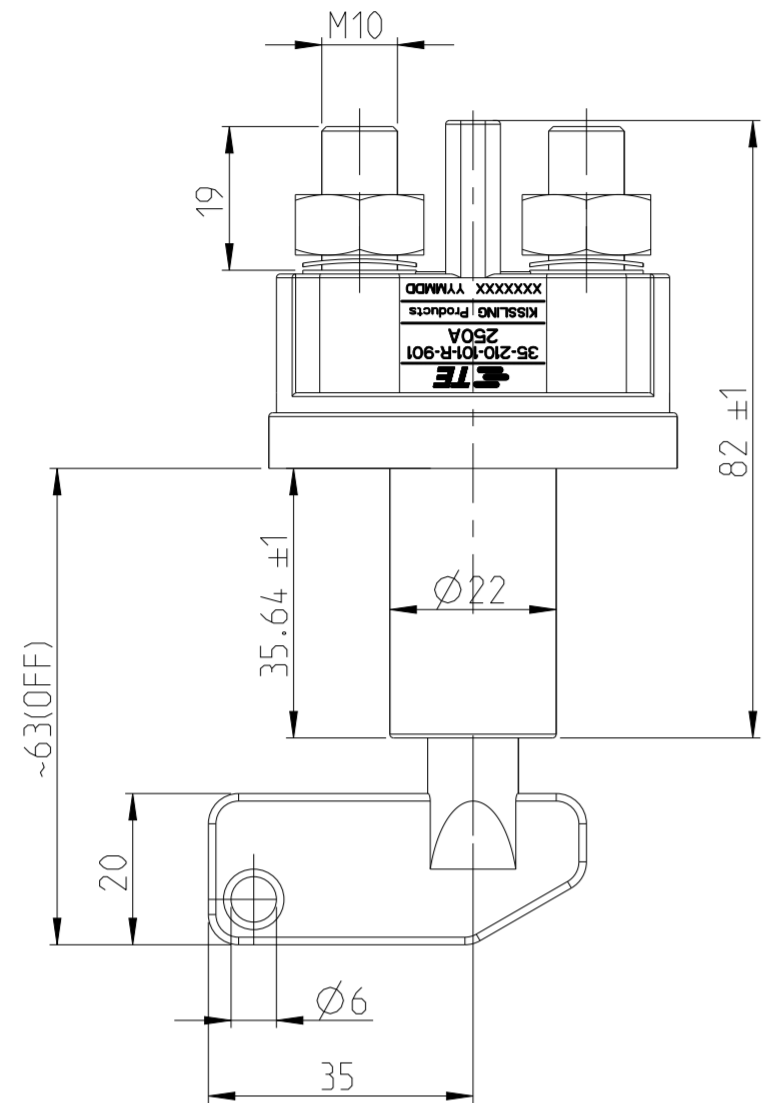


REVISIONS

P	LTR	DESCRIPTION	DATE	DWN	APVD
A		ECN-23-210163 TE STANDARD	26APR2023	LG	AM



TECHNICAL DATA

CASE MATERIAL: COVER	PA GF BLACK
BASE PLATE	PA GF BLACK
SWITCH LEVER	PA GF RED
MIN INSULATION RESISTANCE	100 MOHM
DIELECTRIC WITHSTANDING VOLTAGE	1050V - 1 min.
MAX. CONTACT DROP DURING RESISTIVE LOAD..	150 mV
VOLTAGE	UP TO 32 VDC
DUTY RATING	250 A
OVERLOAD	500 A - 180 sec.
	1000 A - 30 sec.
SEALING	IP 67 / IEC 529
VIBRATION	4 G / 50-2000 Hz
SHOCK G-LEVEL	6G / 11 ms
TEMPERATURE RANGE	-40 °C TO +85 °C
WIRE SECTION (AT NOMINAL LOAD)	MIN. 70 MM ²
SWITCH LEVER	NOT REMOVEABLE
TORQUE (MAIN CONTACTS)	15 - 20 Nm

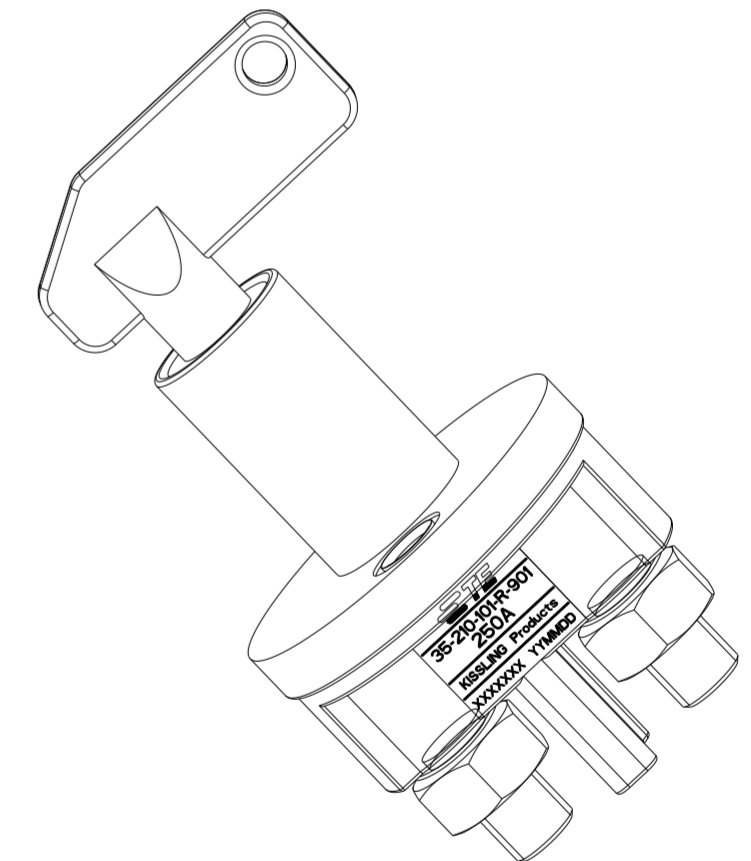
NOTES

Bemerkungen

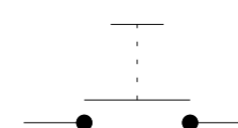
- 1 TE-CONNECTIVITY ORDER-NUMBER
TE-Connectivity Bestellnummer
- 2 DO NOT SWITCH UNDER LOAD!
Nicht unter Last schalten!

Technische Daten

Werkstoff: Haube	PA GF schwarz
Befestigungssockel	PA GF schwarz
Schalthebel	PA GF rot
Min. Isolationswiderstand	100 MOHM
Hochspannungsfestigkeit	1050V - 1 min.
Max. Kontaktspannungsabfall bei Nennlast.....	150 mV
Betriebsspannung	bis 32 VDC
Dauerstrom	250 A
Ueberlast	500A - 180 sec.
	1000A - 30 sec.
Schutzart	IP 67 / IEC 529
Vibraton	4G / 50-2000 Hz
Schock G-Level	6G / 11 ms
Umgebungstemperatur	-40 °C bis +85 °C
Anschlussquerschnitt bei Nennlast	Min. 70 mm ²
Schalthebel	nicht abziehbar
Anzugsmoment (Hauptkontakte)	15 - 20 Nm



CIRCUIT Schaltbild



THIS DRAWING IS A CONTROLLED DOCUMENT.

DIMENSIONS:	TOLERANCES UNLESS OTHERWISE SPECIFIED:
mm	DIN ISO 2768 cL
	0 PLC ±
	1 PLC ±
	2 PLC ±
	3 PLC ±
	4 PLC ±
ANGLES	±
FINISH	

DWN	31JUL2014
CHK	31JUL2014
APVD	05AUG2014
PRODUCT SPEC	
APPLICATION SPEC	
WEIGHT	
CUSTOMER DRAWING	

K1151259	1	A	BATTERY DISCONNECTOR 250A Batterietrennschalter 250A	165	1
TE ORDER-NO.	REV.		DESCRIPTION	WEIGHT (g)	ITEM NO.
NAME			BATTERY DISCONNECTOR 250A Batterietrennschalter 250A		
SIZE	CAGE CODE	DRAWING NO.	RESTRICTED TO		
A2	00779	C-35-210-101-R-901	-		
SCALE			1:1	SHEET	1 OF 1
			REV A		