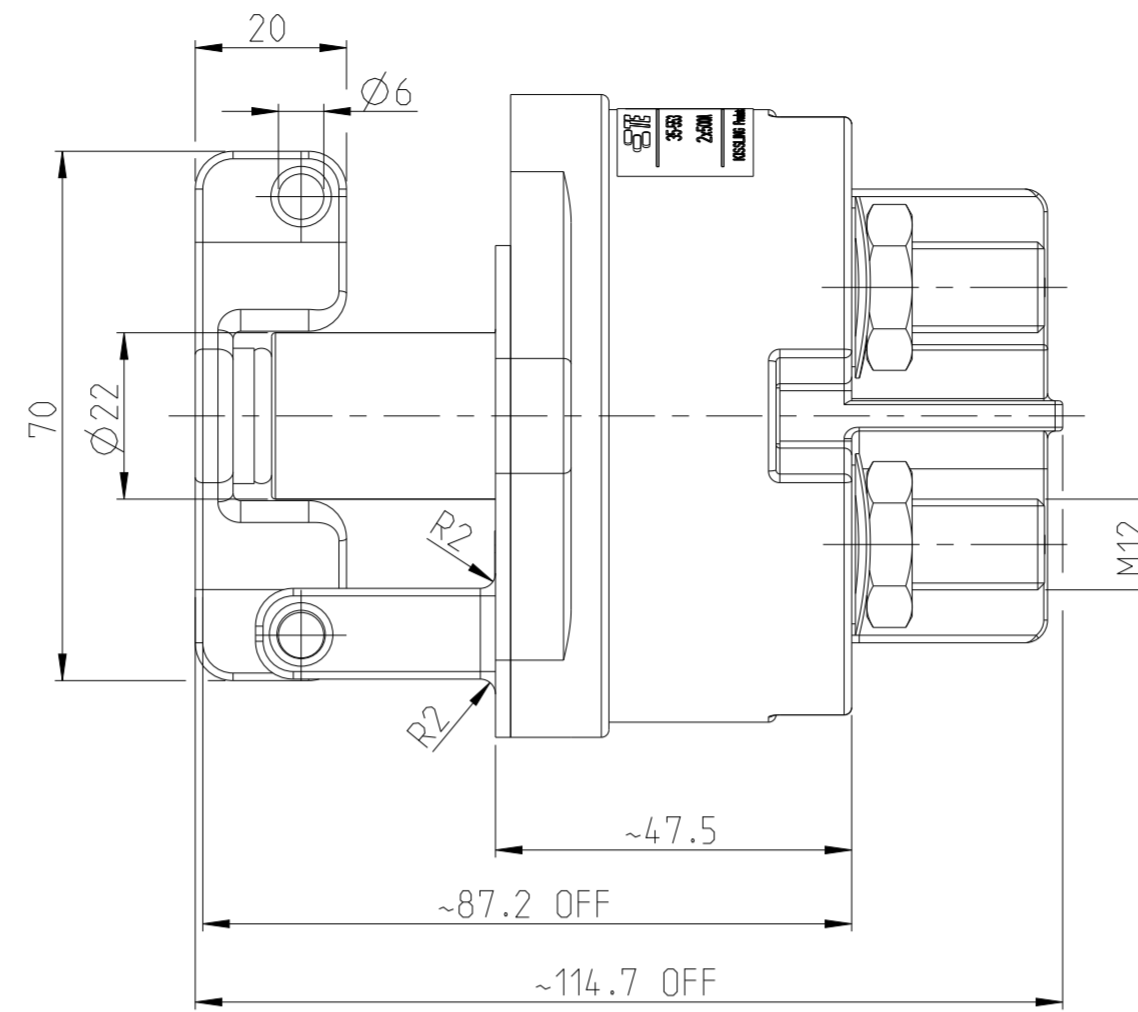
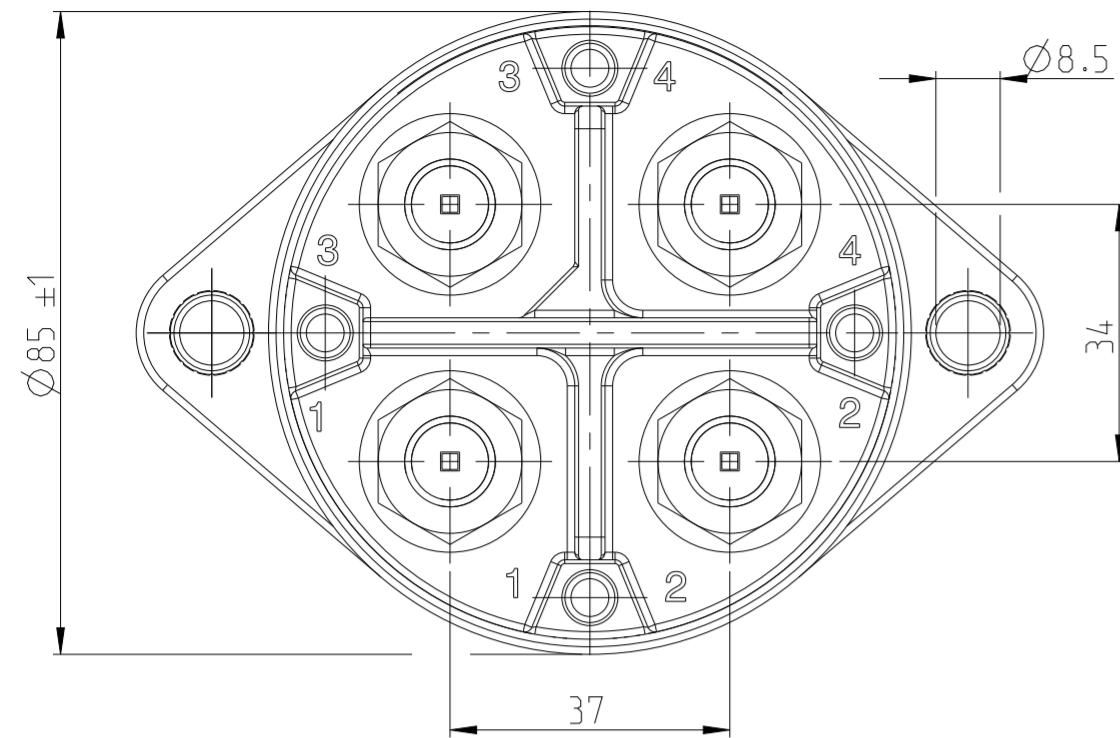
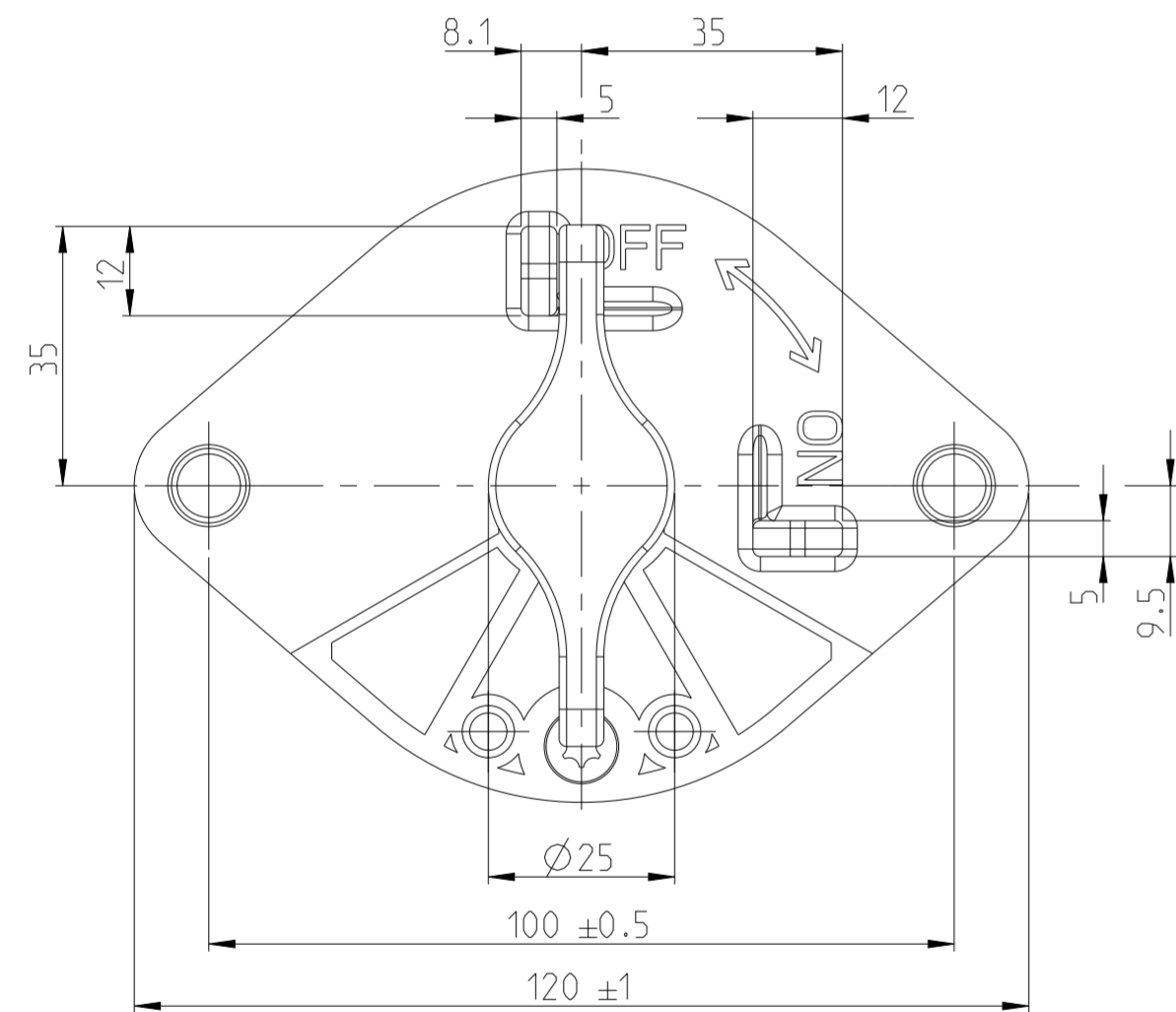


REVISIONS					
P	LTR	DESCRIPTION	DATE	DWN	APVD
A		ECN-23-205329	TE STANDARD	30MAR2023	LG AM



NOTES  
Bemerkungen

- 1 TE-CONNECTIVITY ORDER-NUMBER  
TE-Connectivity Bestellnummer
- 2 DO NOT SWITCH UNDER LOAD!  
Nicht unter Last schalten!

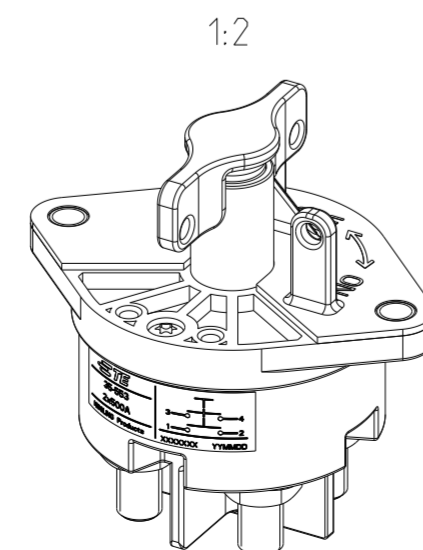


Technische Daten

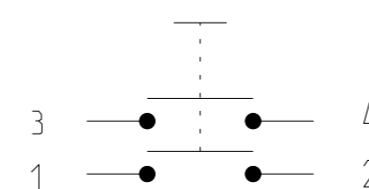
Werkstoff: Haube ..... Vyncolit schwarz  
 Befestigungssockel ..... PA GF schwarz  
 Schalthebel ..... PA GF schwarz  
 Min. Isolationswiderstand ..... 100 MOHM  
 Hochspannungsfestigkeit ..... 1050V - 1 min.  
 Max. Kontaktspannungsabfall bei Nennlast.. 150 mV  
 Betriebsspannung ..... bis 32 VDC  
 Dauerstrom ..... 2x500 A  
 Ueberlast ..... 2x2000A - 1,5 min.  
 ..... 2x2500A - 10 sec.  
 Schutzart ..... IP 67 / IEC 529  
 Vibraton ..... 10 G / 18-500 Hz  
 Umgebungstemperatur ..... -40 °C bis +85 °C  
 Anschlussquerschnitt bei Nennlast ..... Min. 250 mm<sup>2</sup>  
 Schalthebel ..... nicht abziehbar  
 Max. Anzugsmoment (Hauptkontakte) ..... 18 - 22 Nm

TECHNICAL DATA

CASE MATERIAL: COVER ..... VYNCOLIT BLACK  
 BASE PLATE ..... PA GF BLACK  
 SWITCH LEVER ..... PA GF BLACK  
 MIN INSULATION RESISTANCE ..... 100 MOHM  
 DIELECTRIC WITHSTANDING RESISTANCE .. 1050V - 1 min.  
 MAX. CONTACT VOLTAGE DROP ..... 150 mV  
 VOLTAGE ..... UP TO 32 VDC  
 CONTINUOUS RATING ..... 2x500 A  
 OVERLOAD ..... 2x2000A - 1,5 min.  
 ..... 2x2500A - 10 sec.  
 SEALING ..... IP 67 / IEC 529  
 VIBRATION ..... 10 G / 18-500 Hz  
 TEMPERATURE RANGE ..... -40 °C TO +85 °C  
 WIRE SECTION (AT NOMINAL LOAD) ..... MIN. 250 MM<sup>2</sup>  
 KEY ..... NOT REMOVEABLE  
 MAX TORQUE (MAIN CONTACTS) ..... 18 - 22 Nm



CIRCUIT  
Schaltbild



THIS DRAWING IS A CONTROLLED DOCUMENT.

DIMENSIONS:	TOLERANCES UNLESS OTHERWISE SPECIFIED:
mm	DIN ISO 2768cL
	0 PLC ±
	1 PLC ±
	2 PLC ±
	3 PLC ±
	4 PLC ±
	ANGLES ±
	FINISH ±

DWN 16JAN2002 U.Grindemann		K1060657 1 A		BATTERY DISCONNECTOR 2x500A Batterietrennschalter 2x500A		683		1	
CHK 16JAN2002 U.Grindemann		REV.		DESCRIPTION		WEIGHT (g)		ITEM NO	
APVD 09SEP2004 N.Mielke		TE ORDER-NO.		REV.		DESCRIPTION		WEIGHT (g)	
PRODUCT SPEC		NAME		BATTERY DISCONNECTOR 2x500A Batterietrennschalter 2x500A		RESTRICTED TO			
APPLICATION SPEC		SIZE		CAGE CODE		DRAWING NO		REV	
WEIGHT		A2		00779		C-35-553		-	
CUSTOMER DRAWING		SCALE		1:1		SHEET		1 OF 1	