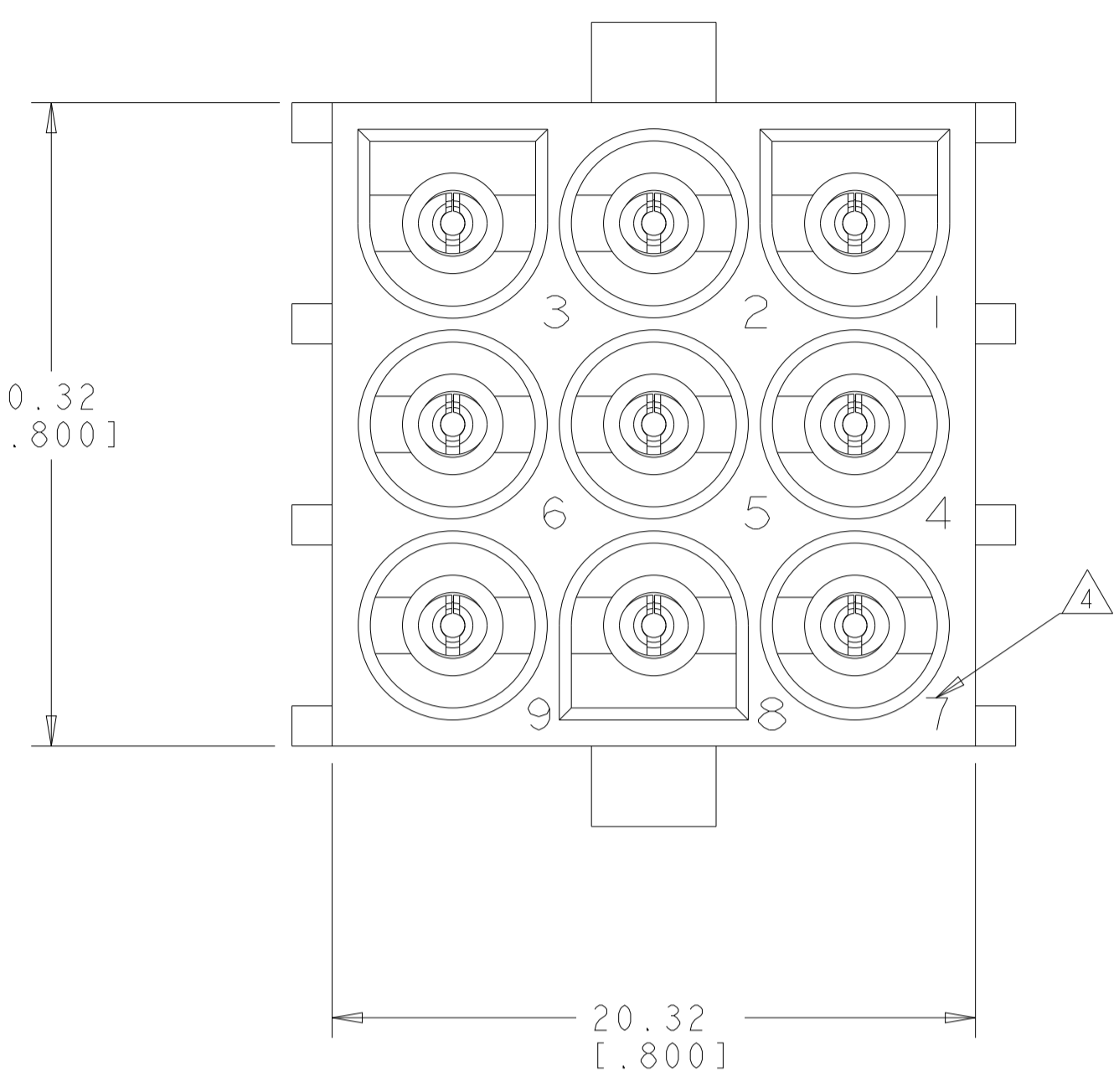
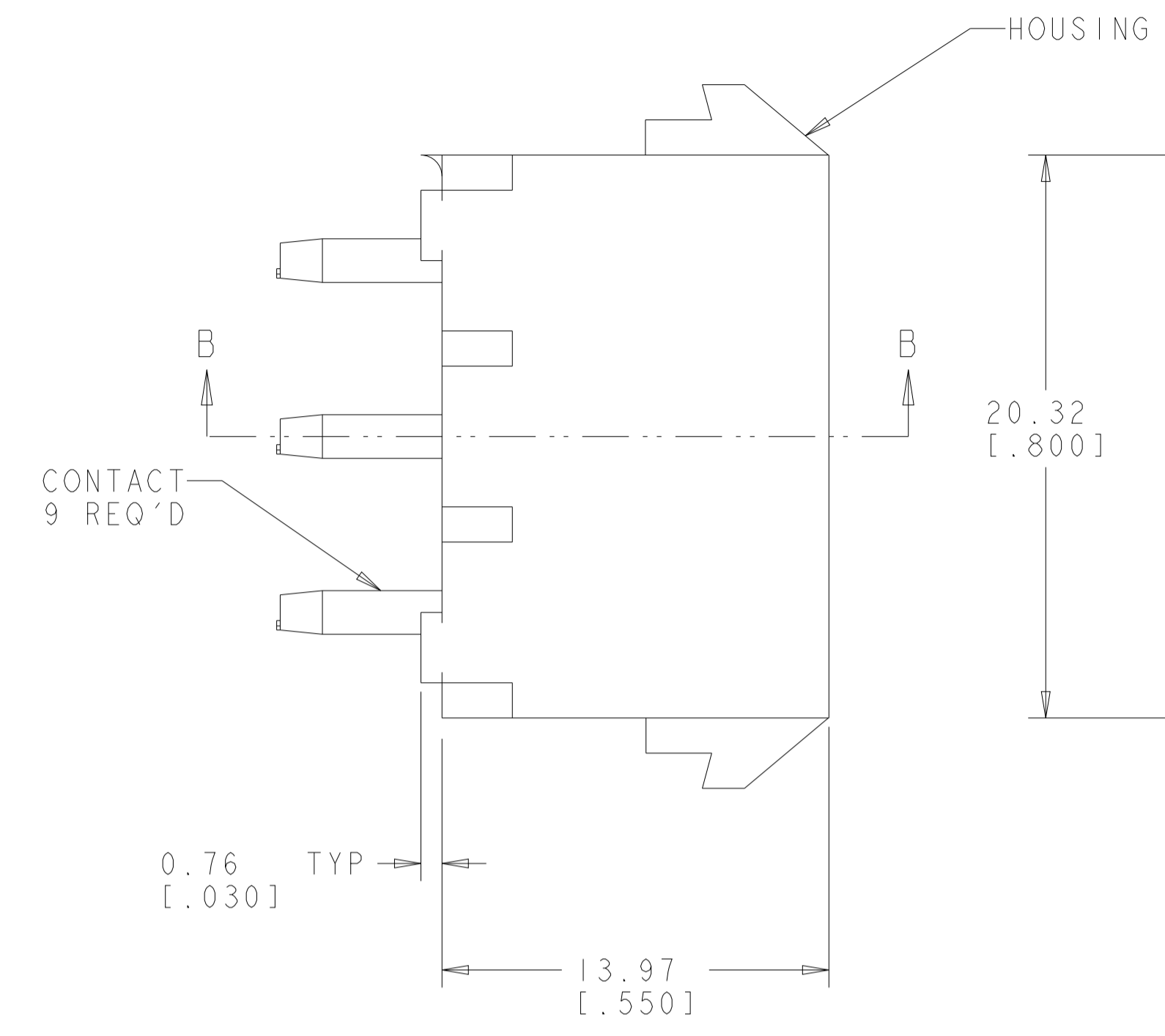
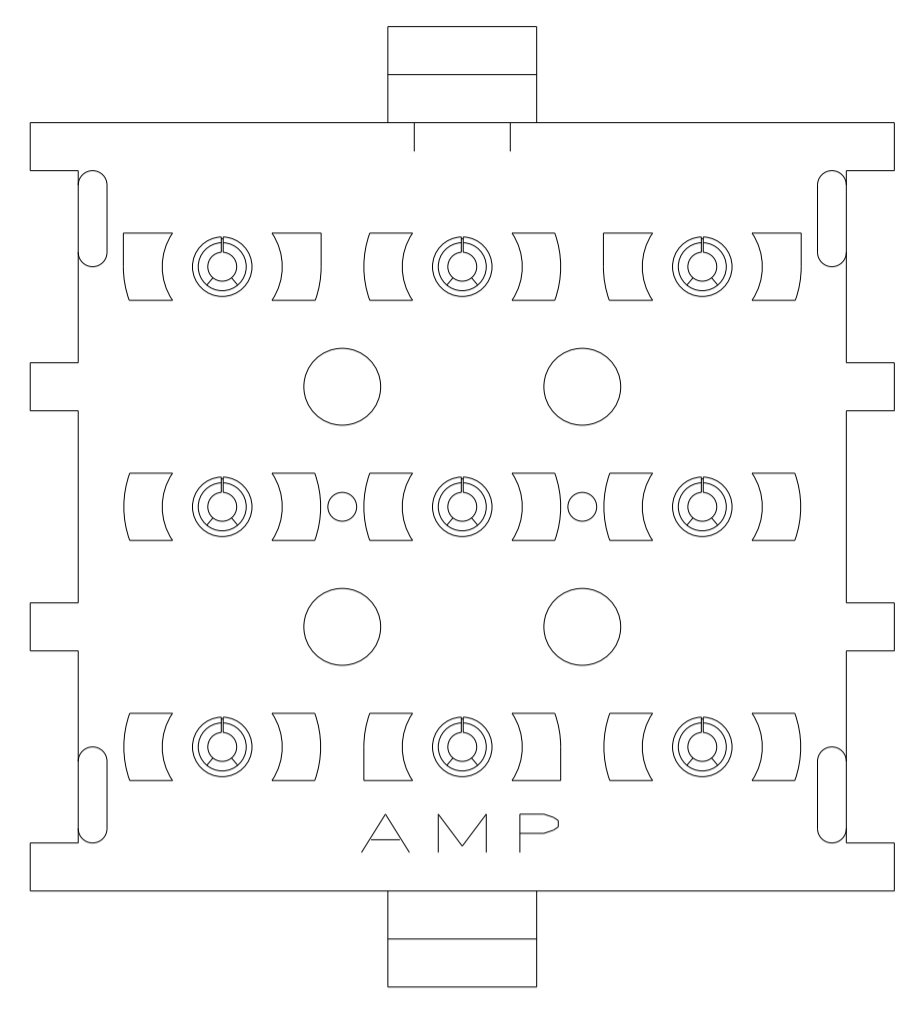
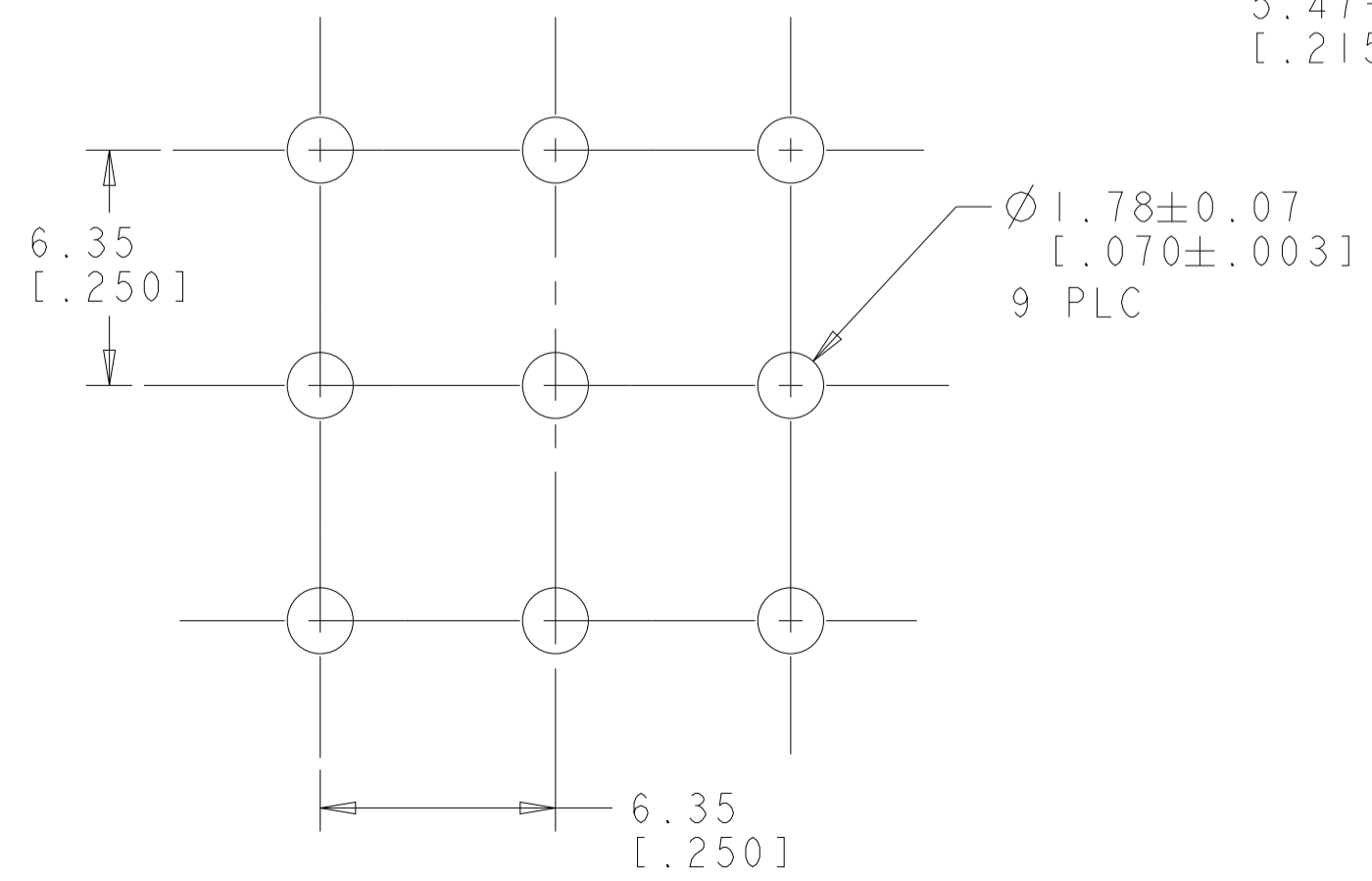
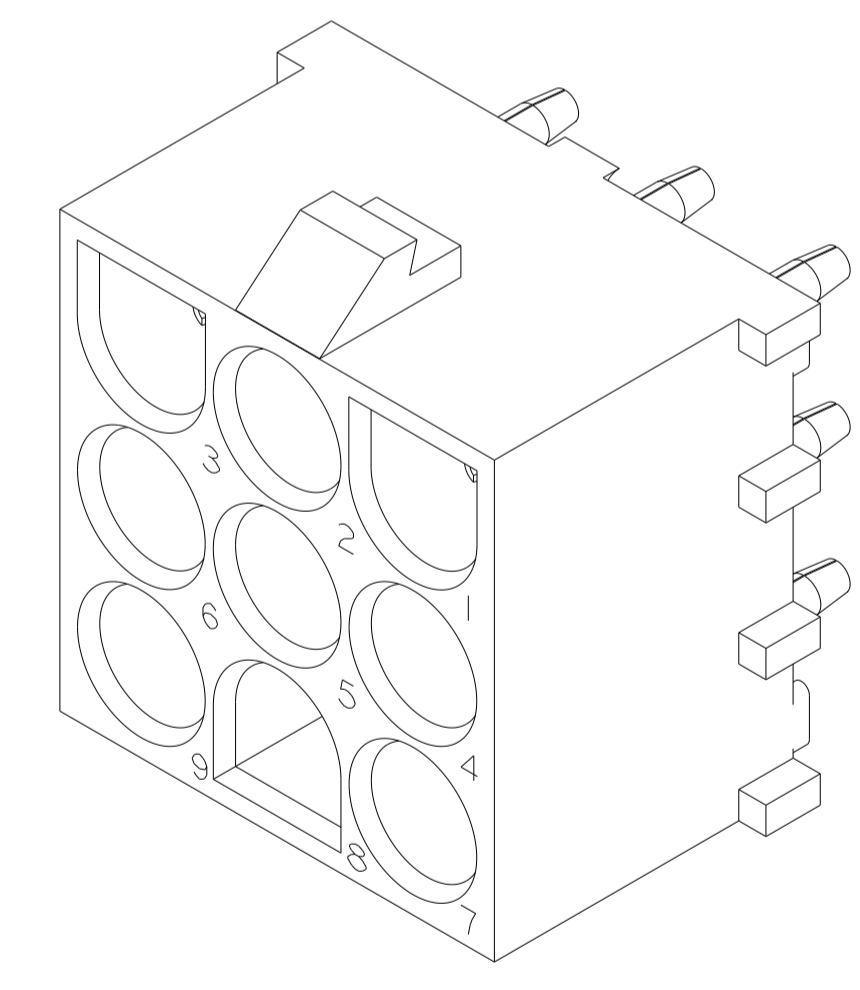
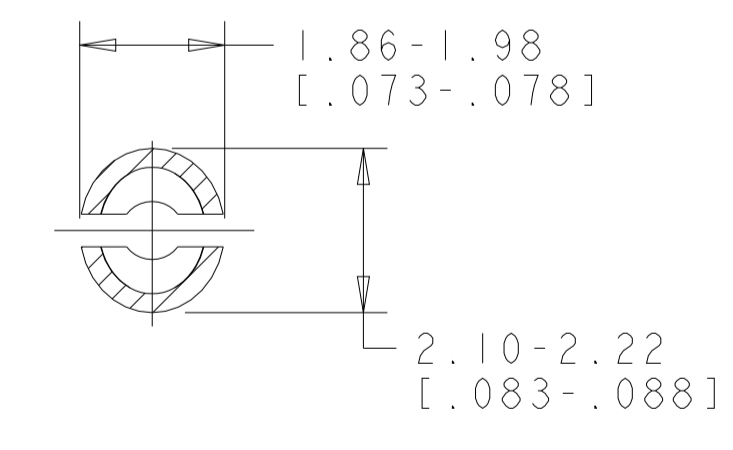
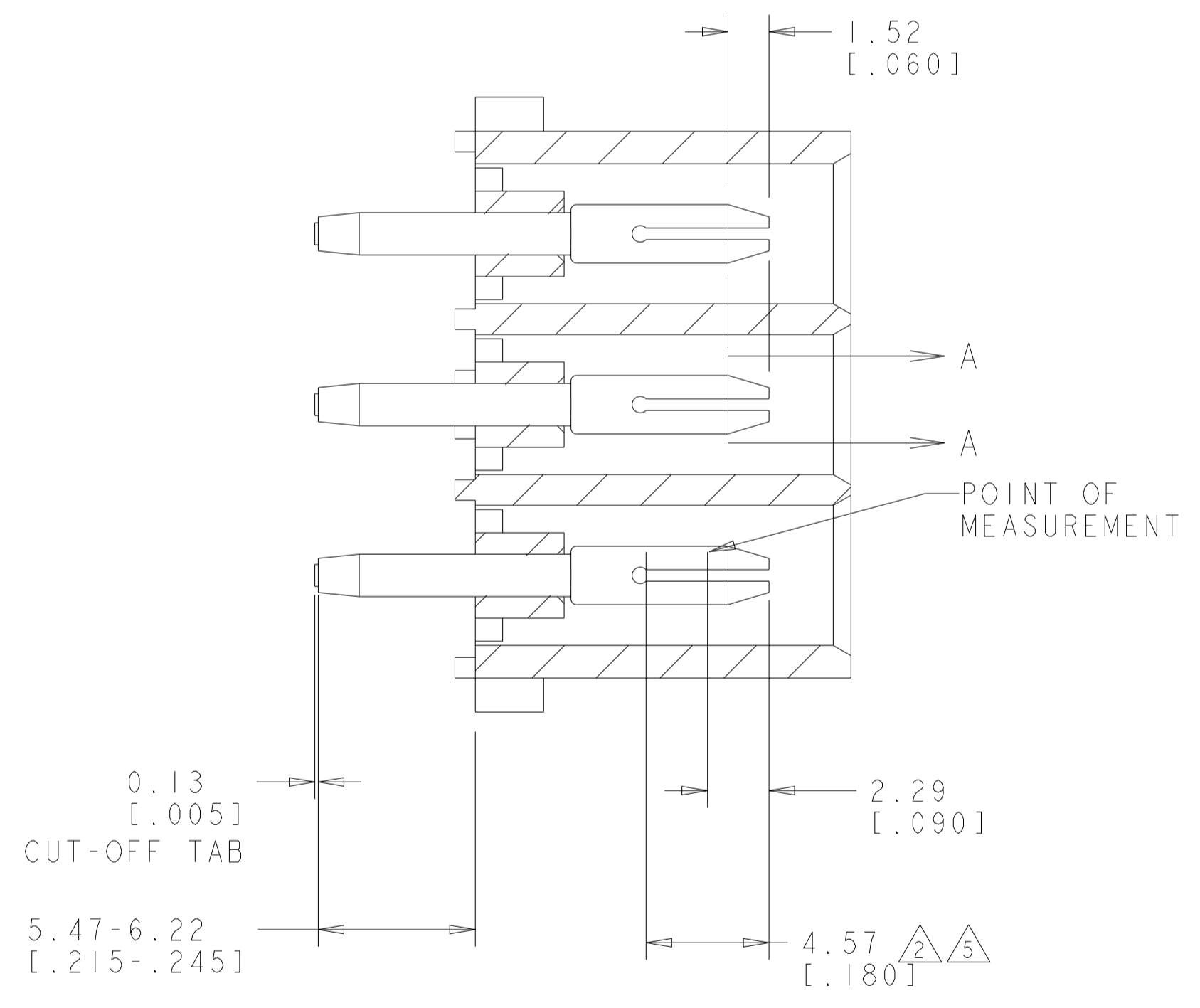


LOC	DIST	REVISIONS					
CM	00	P	LTN	DESCRIPTION	DATE	DWN	APVD
		P1		REVISED PER ECR-12-011660	04FEB2013	KH	TM
		P2		REVISED PER ECR-21-118795	01AUG2022	GR	VS



- PARTS COMPLY TO AMP SOLDERABILITY SPECIFICATION 109-11-3.
- CONTACT IS PLATED OVERALL WITH 0.00127 [.000050] NICKEL, THEN 0.00076 [.000030] GOLD OVER CONTACT LENGTH INDICATED AND TIN LEAD ON SOLDER TAIL END.
- MATES WITH HOUSING 350720.
- CIRCUIT IDENTIFICATION CHARACTERS ARE ADJACENT TO THE INDICATED CAVITIES, BUT LOCATION AND ORIENTATION MAY DIFFER FROM PRINT.
- CONTACT IS PLATED OVERALL WITH 0.00127 [.000050] NICKEL, THEN 0.00076 [.000030] GOLD OVER CONTACT LENGTH INDICATED AND MATTE TIN ON SOLDER TAIL END.
- DIMENSIONS IN BRACKETS ARE IN INCHES.
- SUPERSEDED BY 350742-4
- DIMENSION SHOWN REPRESENT PRODUCT IN DRY CONDITION. ADDITIONAL 2% GROWTH DUE TO END USE LOCATION MOISTURE ABSORPTION MAY OCCUR AND SHOULD BE ACCOUNTED FOR.



RECOMMENDED MOUNTING HOLE PATTERN FOR 1.57 [.062] THICK P.C. BOARD

PHOSPOR BRONZE, GOLD $\Delta 5$	NYLON, UL94V-0, NATURAL	350742-4
PHOSPOR BRONZE, GOLD $\Delta 2$	NYLON, UL94V-0, NATURAL	350742-2
PHOSPOR BRONZE, PRE-TIN	NYLON, UL94V-0, NATURAL	350742-1
PIN CONTACT MATERIAL AND FINISH	HOUSING MATERIAL AND COLOR	PART NUMBER

THIS DRAWING IS A CONTROLLED DOCUMENT.		DWN K. WHITAKER CHK S. RIDGILL	05OCT2005 05OCT2005	TE Connectivity
DIMENSIONS: mm [INCHES]		APVD S. RIDGILL	05OCT2005	
TOLERANCES UNLESS OTHERWISE SPECIFIED:		NAME		PIN HEADER ASSEMBLY, 9 CIRCUIT, LONG TAIL, UNIVERSAL MATE-N-LOK(TM)
0 PLC ± 1 PLC ±0.131(.005) 2 PLC ± 3 PLC ± 4 PLC ± ANGLES ±40°30'		PRODUCT SPEC		
MATERIAL SEE TABLE		APPLICATION SPEC		RESTRICTED TO
FINISH SEE TABLE		WEIGHT		SIZE CAGE CODE DRAWING NO
		CUSTOMER DRAWING		A100779C=350742
		SCALE 5:1		SHEET 1 OF 1 REV P2