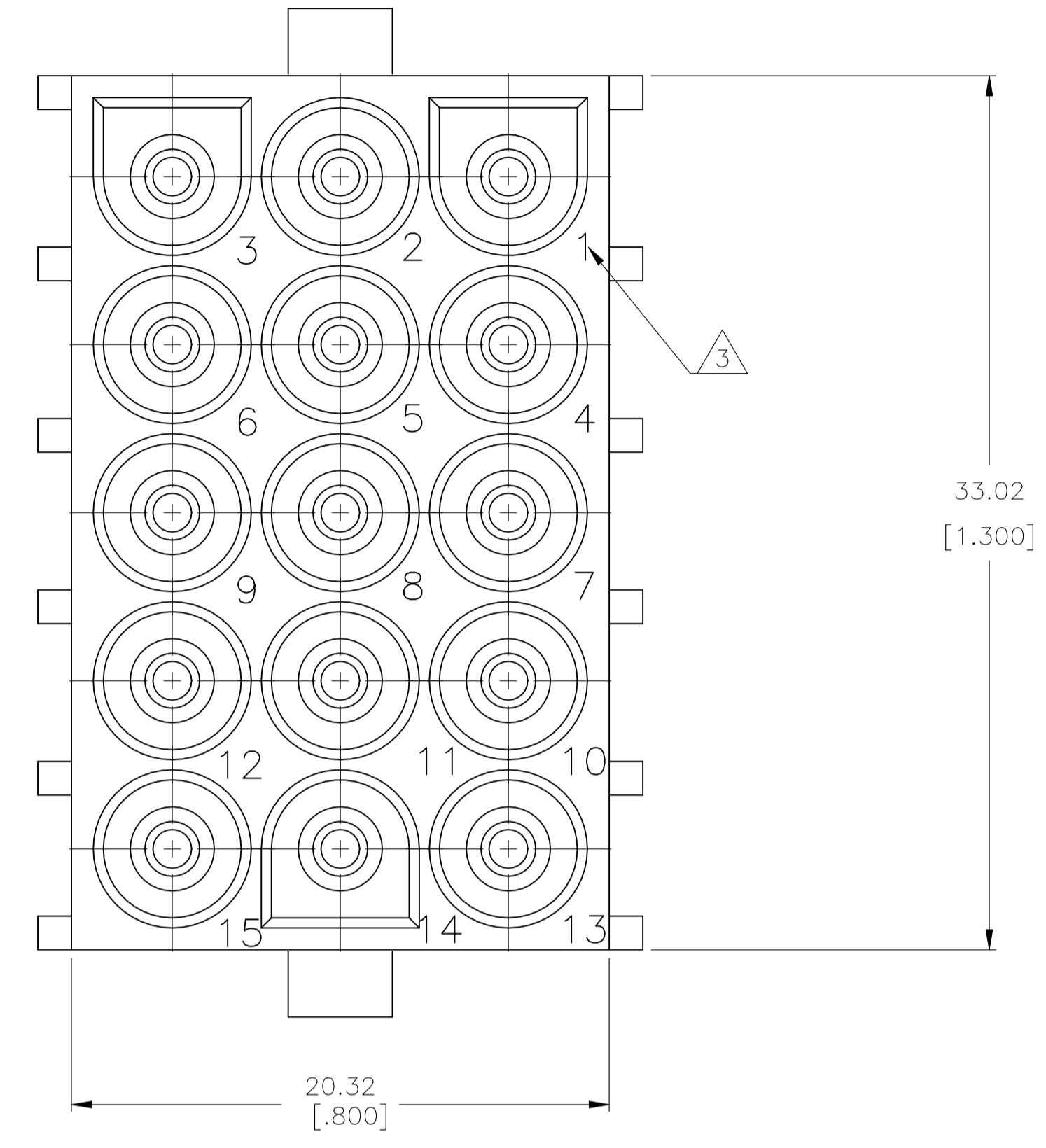
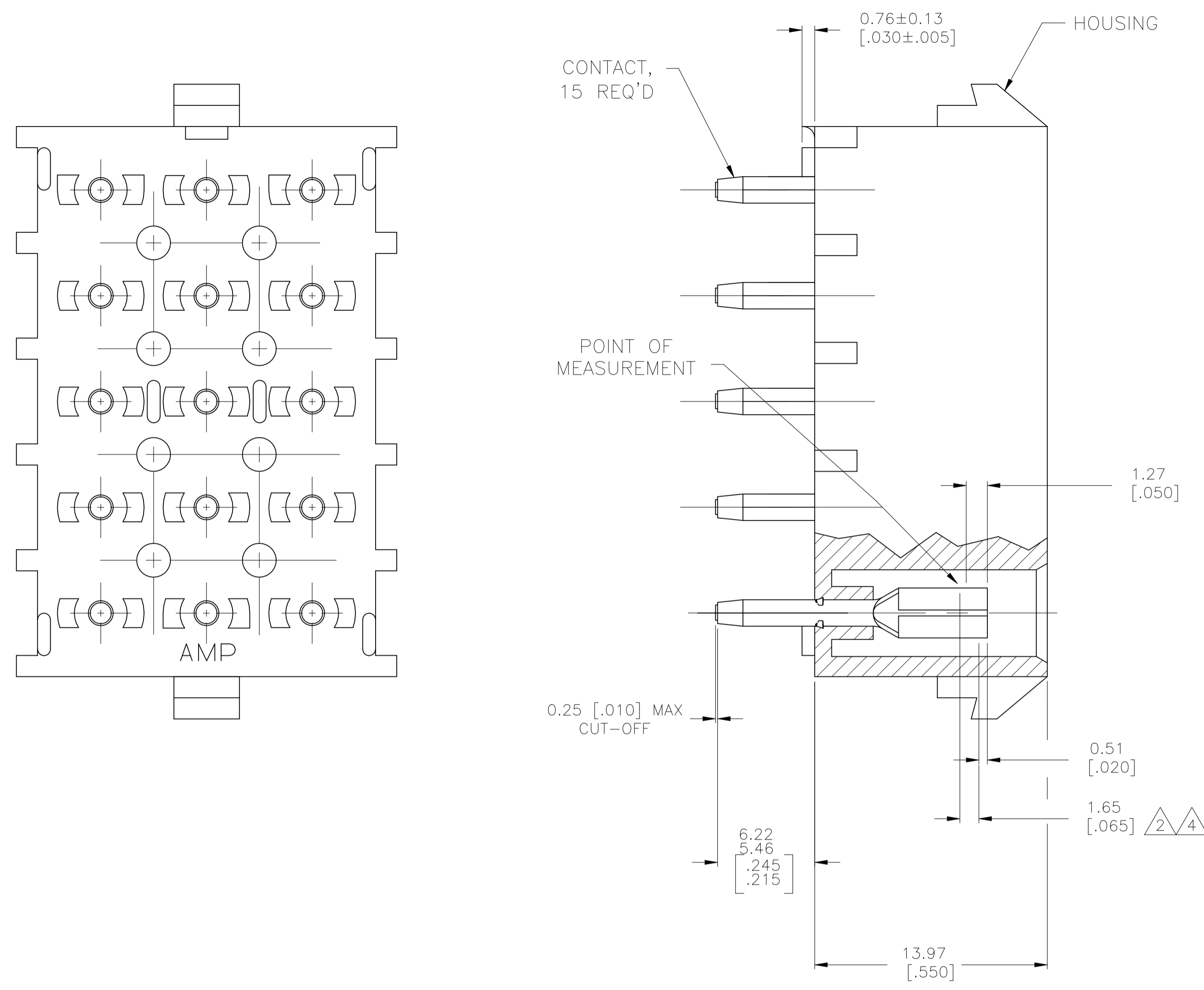
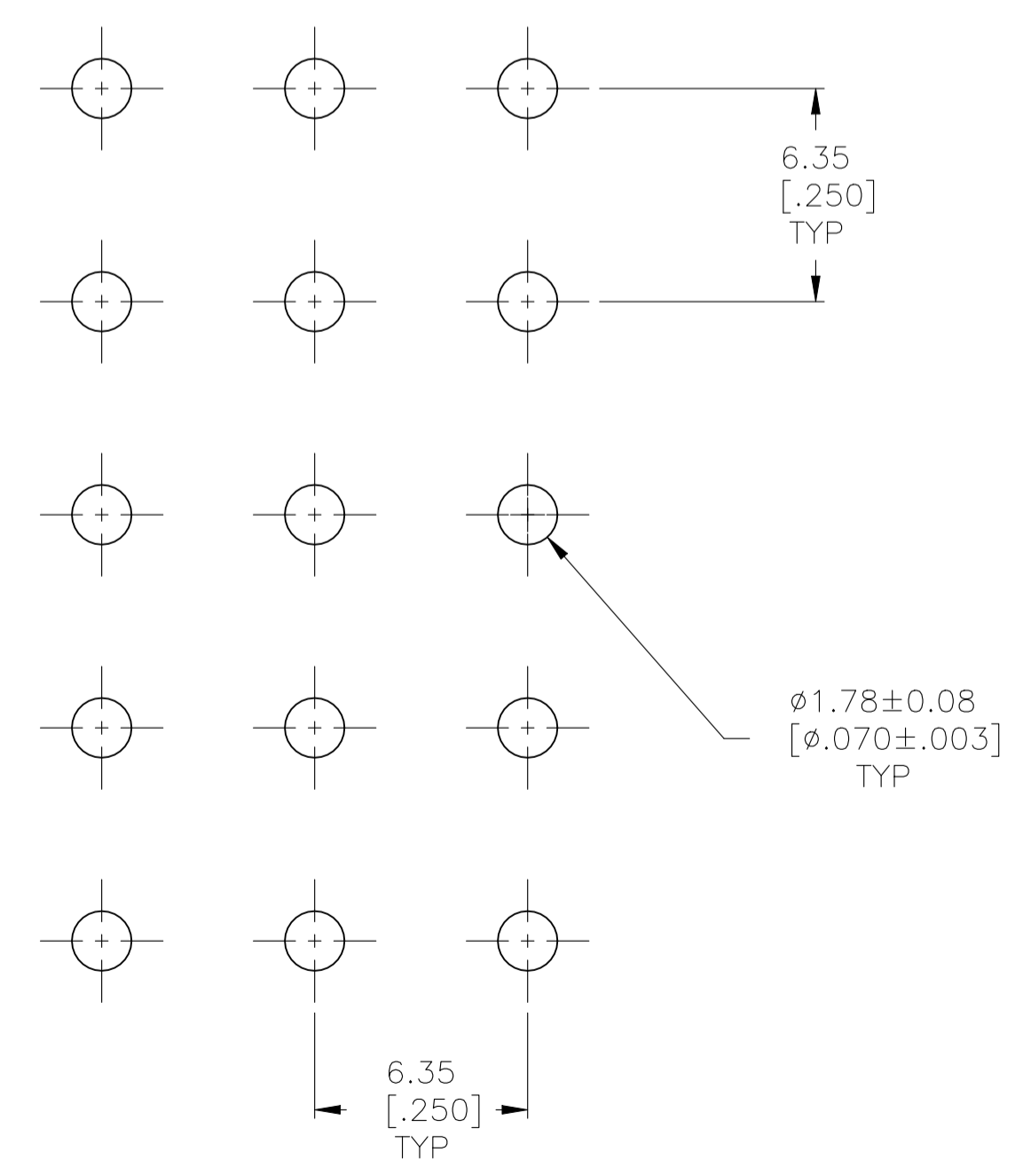


REVISIONS					
REV	DATE	DESCRIPTION	BY	CHK	APP'D
L4	22JUL2022	REVISED PER ECR-21-118222	AVN		VS
L3	06JAN15	REVISED PER ECR-14-018199	AV		DZ



- 1 PARTS MUST COMPLY WITH TE SOLDERABILITY SPEC 109-11-3.
- 2 CONTACT IS STAMPED FROM PRE-PLATED STOCK WHICH IS PLATED OVERALL WITH 0.00127 [.000050] NICKEL, THEN STRIPED WITH 0.00076 [.000030] GOLD IN CONTACT AREA INDICATED AND TIN-LEAD ON SOLDER TAIL END.
- 3 CIRCUIT IDENTIFICATION CHARACTERS ARE ADJACENT TO THE INDICATED CAVITIES, BUT LOCATION AND ORIENTATION MAY DIFFER FROM PRINT.
- 4 CONTACT IS PLATED OVERALL WITH 0.00127 [.000050] NICKEL, THEN 0.00076 [.000030] GOLD OVER CONTACT LENGTH INDICATED AND MATTE TIN ON SOLDER TAIL END.
- 5 SUPERSEDED BY 350837-4
- 6 DIMENSIONS SHOWN REPRESENT PRODUCT IN DRY CONDITION. ADDITIONAL 2% GROWTH DUE TO END USE LOCATION MOISTURE ABSORPTION MAY OCCUR AND SHOULD BE ACCOUNTED FOR.



RECOMMENDED LAYOUT FOR 3.18 [.125] THICK PC BOARD

5	PH BRZ GOLD ⁴	NYLON, 94V-0	350837-4
	PH BRZ GOLD ²	NYLON, 94V-0	350837-2
	PH BRZ TIN	NYLON, 94V-0	350837-1
	CONTACT	HOUSING	PART NO

THIS DRAWING IS A CONTROLLED DOCUMENT.		DIN K. WHITAKER 11OCT2005		TE Connectivity	
DIMENSIONS: mm [INCHES]		CHK S. RIDGILL 11OCT2005		APPROVED S. RIDGILL 11OCT2005	
TOLERANCES UNLESS OTHERWISE SPECIFIED:		NAME		15 CIRCUIT UNIVERSAL MATE-N-LOK (TM) P.C. BOARD SOCKET HEADER ASSEMBLY	
0. PLC ±	1. PLC ±	APPLICATION SPEC		SIZE	CAGE CODE
2. PLC ±	3. PLC ±	RESTRICTED TO		WEIGHT	DRAWING NO
4. PLC ±	ANGLES ±	CUSTOMER DRAWING		0.000000	A100779C=350837
MATERIAL SEE TABLE		FINISH SEE TABLE		SCALE	SHEET 1 of 1
				5:1	REV L4