

Figure 1

1. INTRODUCTION

CST-100 II Contact 1375819-[] can be extracted from Housing 1375820-[] using a commercially-available precision tweezer with a tip width of 0.38 mm [.015 in.] and tip thickness of 0.25 mm [.010 in.] (approximately). Common listings of this type of tweezer are Pattern 6, Type 6, or 6-SA; or MM, Pattern MM, MM SA, or MM Boley Style.

NOTE



Dimensions in this instruction sheet are in metric units [with U.S. customary units in brackets]. Figures are not drawn to scale.

Read these instructions thoroughly before removing any contacts from the housing.

Reasons for reissue of this instruction sheet are provided in Section 4, REVISION SUMMARY.

2. DESCRIPTION

When properly inserted into the housing contact cavity, the tweezer is used to raise the locking ramp to release the contact locking tab, allowing the contact to be removed from the back (wire end) of the housing. Refer to Figure 1.

3. EXTRACTION PROCEDURE

DANGER



The tips of the tweezer are sharp. To avoid personal injury or damage to the housing, be careful when using the tweezer.

1. Place the housing on a flat surface with the locking ramps facing up.
2. Grasp the wire, and push the contact toward the front (mating end) of the housing so that the locking tab is away from the locking ramp. See Figure 2, Detail A.

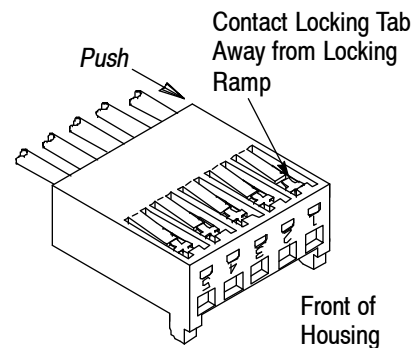
3. While keeping the contact in place, position the tweezer over the contact so that the tips straddle the locking tab. See Figure 2, Detail B.

IMPORTANT — To avoid damage to the contact, make sure that the tweezer tips straddle the contact locking tab. Be careful NOT to depress the locking tab.

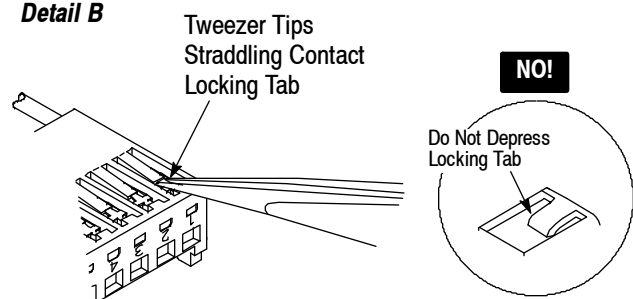
4. Slightly squeeze the tweezer, and slide the tweezer tips along the locking ramp. *Slowly* pivot the tweezer downward so that the end of the locking ramp raises slightly, only enough to clear the contact locking tab. See Figure 2, Detail C.

IMPORTANT — Be careful not to over-extend the locking ramp. If the end of the locking ramp is raised too much, it will NOT return to its original position.

Detail A



Detail B



Detail C

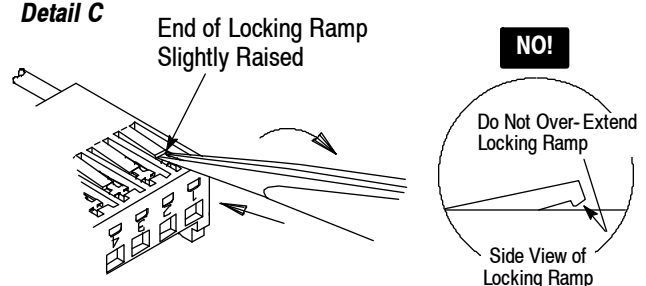


Figure 2

5. While holding the locking ramp in position, *gently* pull back on the wire until the contact is free. See Figure 3. If the contact does not pull out freely, push it back into the housing, and repeat the extraction procedure.

IMPORTANT — DO NOT pull the wire in a harsh manner. If the locking ramp is *not* raised enough to clear the contact locking tab, the locking ramp will be cut or sheared. If the locking ramp is cut or sheared, discard the housing.



DO NOT raise the locking ramp to check for damage; instead, after inserting a contact into that contact cavity, pull back on the wire to ensure that the contact locking tab has engaged the locking ramp. If not, and the contact pulls out, the locking ramp has been damaged.

4. REVISION SUMMARY

Revisions to this instruction sheet include:

- Replaced company logo

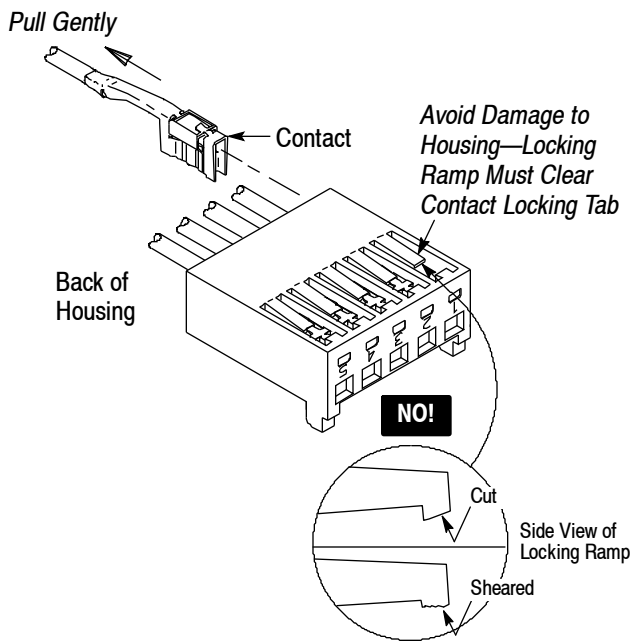


Figure 3