

Housing Assembly 2 Posn, Standard Power Timer Rec.

1. SCOPE

1.1 Content

This Instruction Sheet is to provide useful information for correct assembly of contact terminals and secondary lock.

TE P/N	TRADE MARK DESCRIPTION
881623-1	Hsg Ass'y 2p Standard Power Timer

Table1

2. PACKAGING OF THE CONNECTOR

Hsg Assy 2 Posn, Standard Power Timer REC. (PN 881632-1) is show on Figure 01. The connector have mechanical polarization to assure the proper mating between male and female housing. The connector is supplied in packaging box.

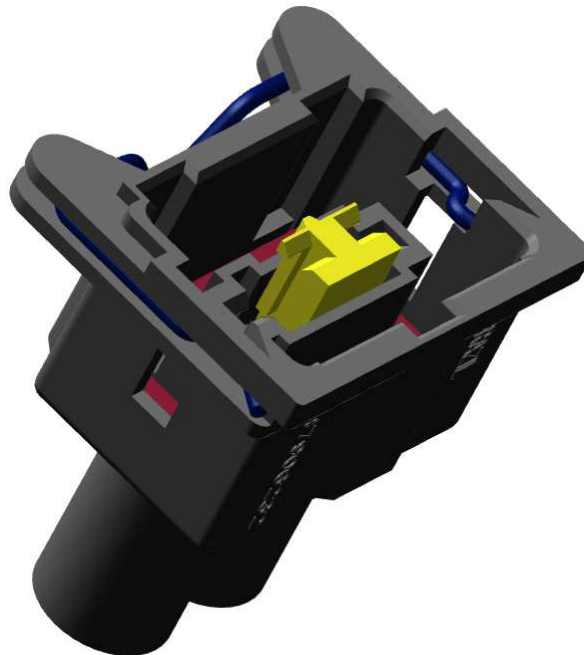


Figure 01

3. CONTACTS LOADING

The terminals must be positioned according Figure 2. Push the terminal into the housing cavities until a tactile and audible "click" is felt and heard. Pull back slightly to confirm the terminal is latched into the primary locked position.

TE P/N	TRADE MARK DESCRIPTION
1355048 (Version B)	Standard Power Timer Contact

Table 2

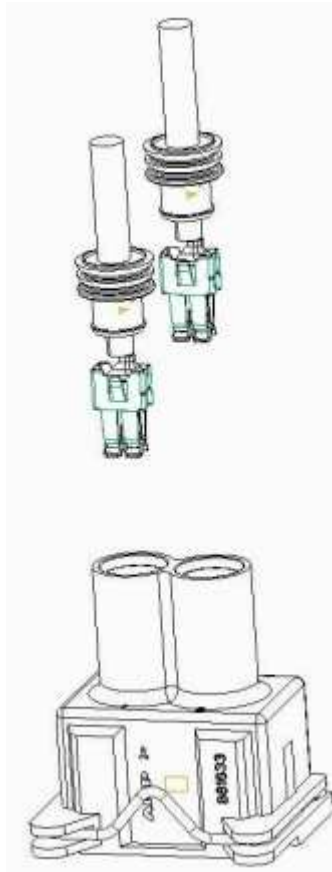


Figure 02

4. SECONDARY LOCK CLOSING DEVICE

After the insertion of the contacts into their cavities, close de Secondary Lock, by pushing it in the direction shown by the arrow in Figure 03 below, into the relevant seats in the housing until the end position.

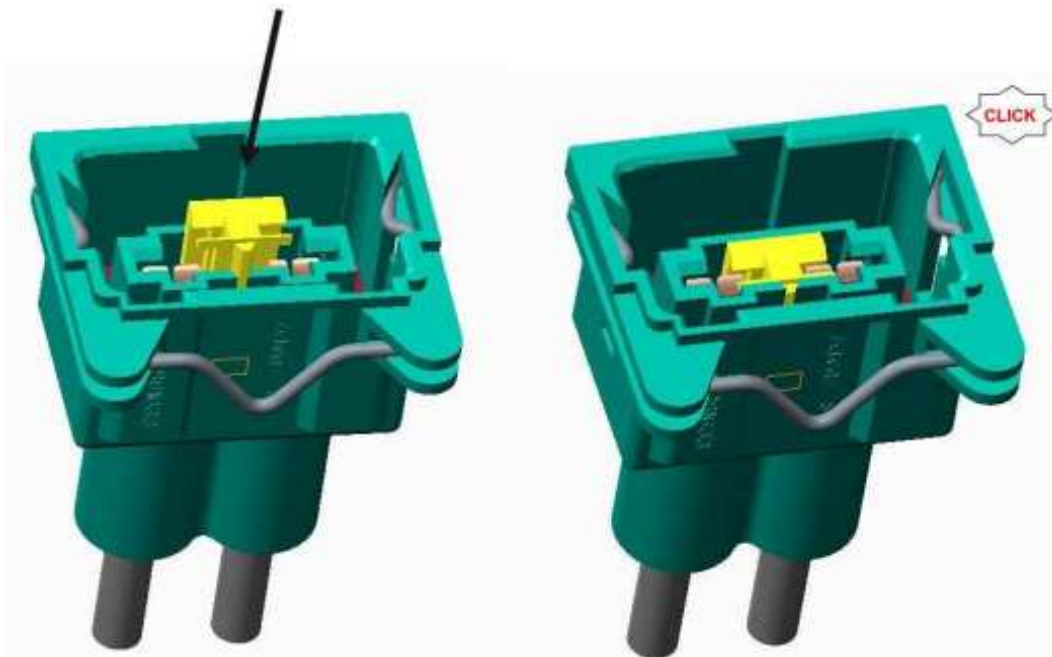


Figure 03

5. CONTACTS EXTRACTION

It is not possible to disassemble the secondary lock of the connector since in the locked position. This operation can cause damage on the housing and secondary lock.

Revision Record					
Rev.	Date	Description	Prepared	Checked	Approved
A	15-Jun-2015	Released	W. Andrade	D. Oliveira	J. Meneghin