

**SAFETY ORGANIZATION(S):**

THIS FILTER HAS BEEN FORMALLY RECOGNIZED, CERTIFIED OR APPROVED BY THE LISTED AGENCY. THEREFORE, ALL TEST/REQUIREMENTS SPECIFIED IN THE LATEST REVISION OF THE FOLLOWING AGENCY STANDARDS HAVE BEEN MET:

UL RECOGNIZED                   UL 1283  
 CSA CERTIFIED                CSA 22.2, NO.0,0.4,8  
 VDE APPROVED                 VDE 565-3, 625

**OPERATING SPECIFICATIONS:**  
 LINE VOLTAGE/CURRENT:       5 AMP., 120 VAC  
                                      4 AMP., 250 VAC  
                                      4 AMP./40°C, 250 VAC  
 LINE FREQUENCY:             50-60Hz  
 MAX. LEAKAGE CURRENT, EACH  
 LINE TO GROUND             .25mA AT 120V 60Hz  
                                      .42mA AT 250V 50Hz  
 OPERATING AMBIENT TEMP. RANGE:   -10°C TO +40°C @ RATED CURRENT, I  
 IN AN AMBIENT,  $T_a$ , HIGHER THAN 40°C, THE MAXIMUM OPERATING  
 CURRENT,  $I_o$ , IS AS FOLLOWS:

$$I_o = I_r \sqrt{\frac{85 - T_a}{45}}$$

**RELIABILITY SPECIFICATIONS:**

STORAGE TEMPERATURE:       -40°C TO +85°C  
 HUMIDITY:                     21 DAYS @ 40°C 95% RH  
 CURRENT OVERLOAD TEST:      6 TIMES RATED CURRENT  
                                      FOR 8 SECONDS

**TEST SPECIFICATIONS:**

INDUCTANCE:                   .93mH NOMINAL  
 CAPACITANCE:  
 (MEASURED AT 1 KHz, 0.25 VAC MAX., 25°C ±1°C)  
 LINE TO LINE:                 .01μF ±20%  
 LINE TO GROUND:             .005μF ±20%  
 DISCHARGE RESISTOR:        1.5 MΩ  
 LINE/GROUND AND LINE/LINE   6000 MΩ (MIN)  
 INSULATION RESISTANCE      AT 100 VDC  
 (W/O DISCHARGE RESISTOR)   20°C AND 50% RH

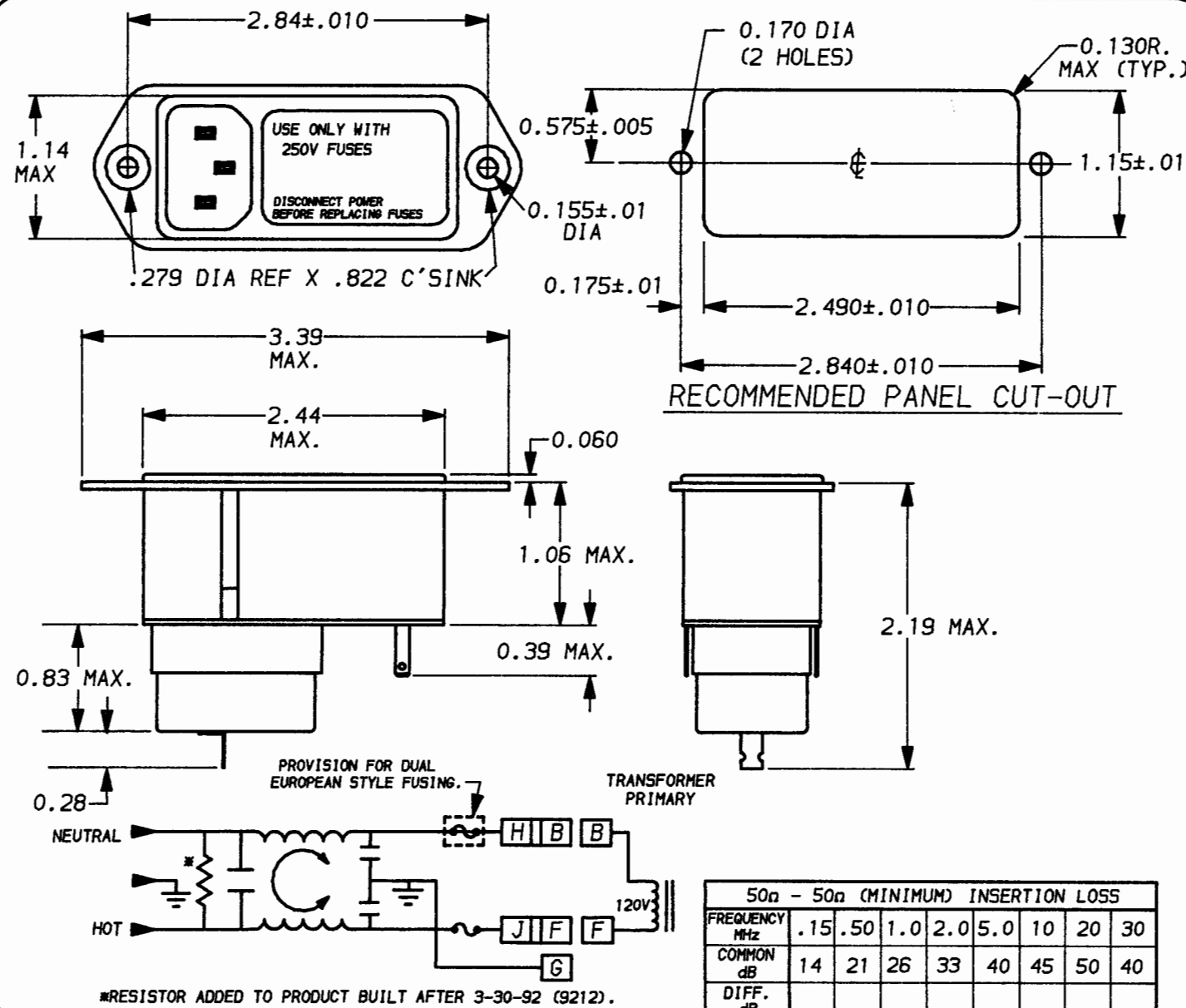
**RECOMMENDED RECEIVING INSPECTION HIPOT:**

LINES TO GROUND:            1500 VAC FOR 1 MINUTE  
 LINE TO LINE:                1450 VDC FOR 1 MINUTE

**FILTER APPROVAL:**


THE BEST WAY TO SELECT AND QUALIFY A FILTER IS FOR YOUR ENGINEERING TO TEST THE UNIT IN YOUR EQUIPMENT.

SEFM1



**RECOMMENDED PANEL CUT-OUT**

50Ω - 50Ω (MINIMUM) INSERTION LOSS								
FREQUENCY MHz	.15	.50	1.0	2.0	5.0	10	20	30
COMMON dB	14	21	26	33	40	45	50	40
DIFF. dB								

<p>UNLESS OTHERWISE SPECIFIED, TOLERANCE TO BE ±.025</p> <p>MATERIAL &amp; FINISH: AS SUPPLIED</p> <p>This document is proprietary to CORCOM INC. and is not to be reproduced nor used for manufacturing purposes except on CORCOM'S prior written consent.</p>	 <p>LIBERTYVILLE, IL 60048</p>	
	<p><b>POWER LINE FILTER</b></p>	
	<p>DATE: 4-18-94</p> <p>APPROV.:</p>	<p>CATALOG NO. SEFM1.05</p> <p>REV. 05</p> <p>CAD NO. SEFM1.05</p>