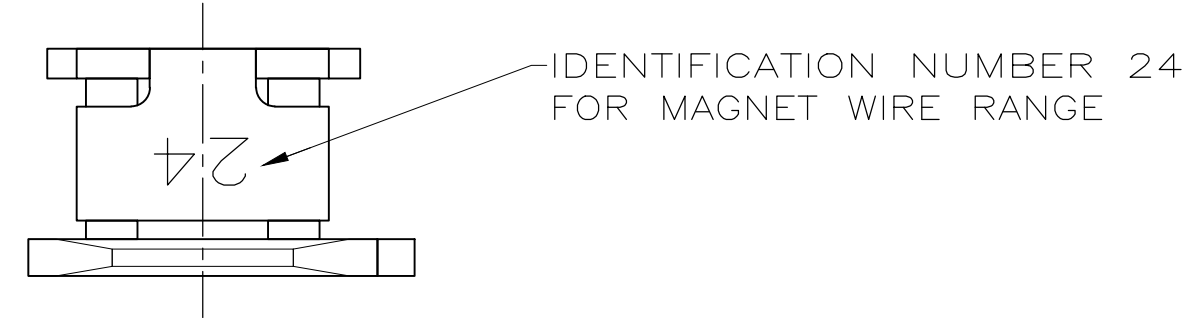
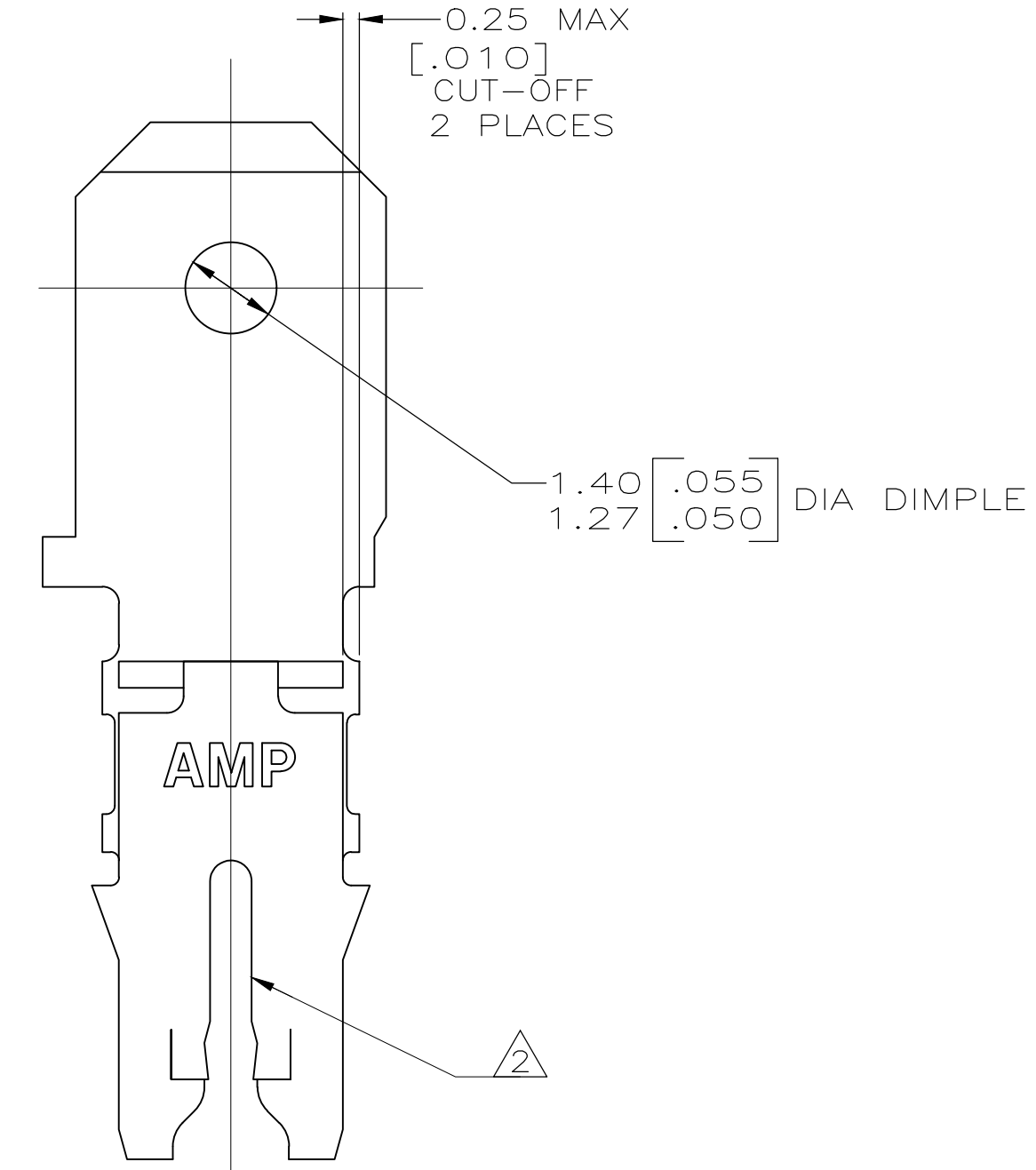
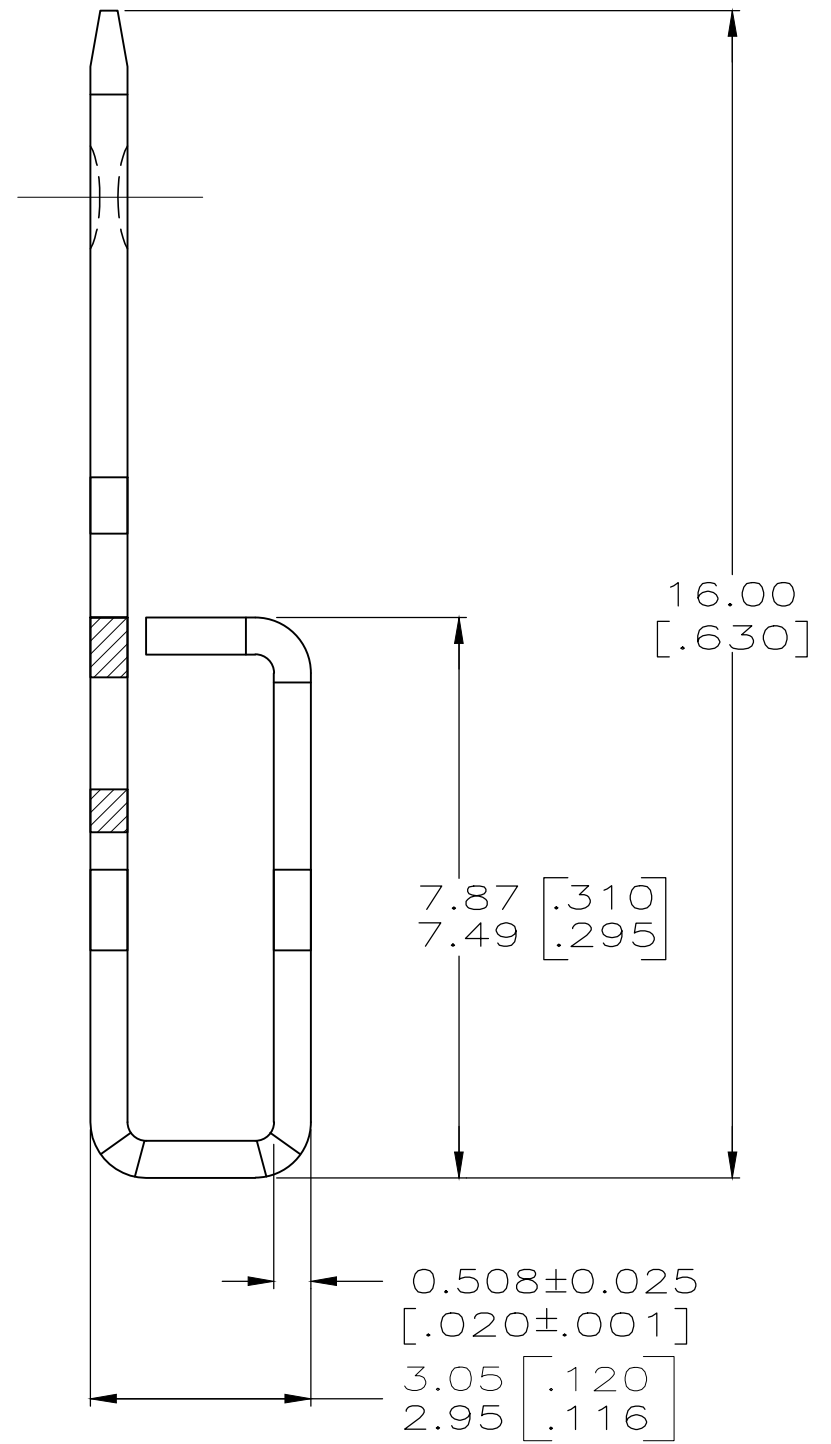
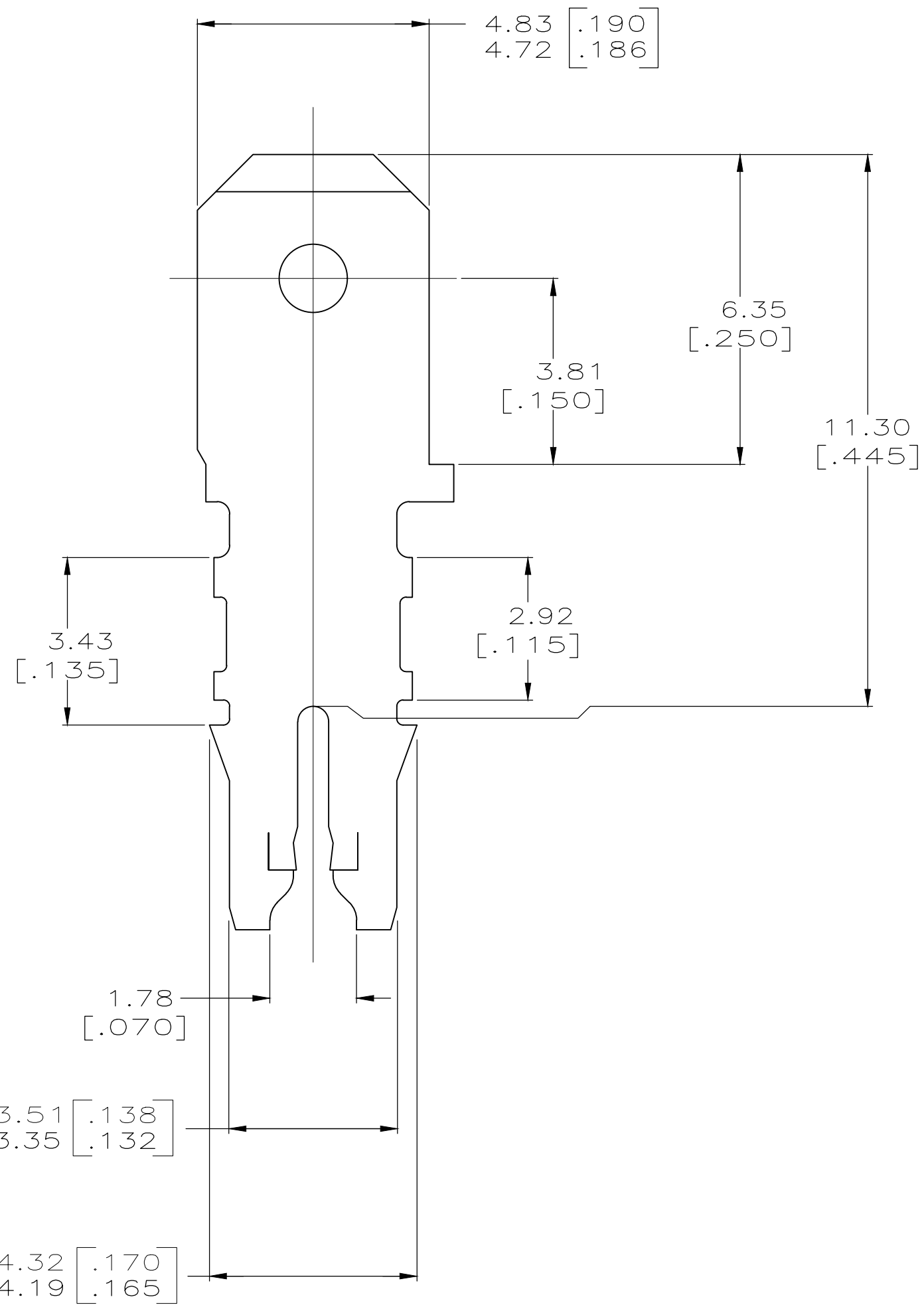


LOC	DIST	P	F	ZONE	LTR	REVISIONS	DATE	APPD
AF	50					B REVISE SLOT HEIGHT OL10-0401-97	01OCT97	MF/KR
						C REVISED PER ECR-19-016302	25NOV2019	JA/PKS



1. SLOT TERMINATES A SINGLE MAGNET WIRE ONLY. COPPER RANGE: 0.91-1.20mm [#19-#16.5] AWG. ALUMINUM RANGE: 1.02-1.20mm [#18-#16.5] AWG, WITH CAVITY ANVIL HEIGHT TO BE 2.29±0.13 [.090±.005] FOR ALUMINUM WIRE ONLY. ALUMINIUM WIRE RANGE IS APPLICABLE FOR POST TIN PLATED PARTS ONLY.

2. AFTER INSERTION INTO PLASTIC HOLDER TAB PORTION MUST BE BENT OVER 45° TO 90° OR POTTED-IN TO PREVENT PULL-OUT WHEN MATING RECEPTACLE IS DISCONNECTED.



63829

DO NOT SCALE PRINT. UNLESS SPECIFIED DIMENSIONS IN mm [INCHES] TOLERANCES ON:		DR 06/FEB/95 MICHAEL S. FEHER		TE Connectivity	
2 PLC DEC ± 0.25 [.010]		CHK 07/FEB/95 RICHARD GRZYBOWSKI			
3 PLC DEC ± -		APPD 09/FEB/95 NELSON E. NEFF		NAME	
ANGLES ± -		APPD 09/FEB/95 TERRY L. SHUTTER		TERMINAL, TAB, 4.75 [.187] FASTON™, LOOSE PIECE, MAG-MATE™	
MATERIAL 4M BRASS		PRODUCT SPEC 108-2012		SIZE	CAGE CODE
FINISH 0.002032 [.000080] MIN TIN PER MIL-T-10727		APPLICATION SPEC 114-2046		1	00779
		WEIGHT -		SCALE 10:1	DRAWING NO C-63829
				SHEET 10F 1	

THIS DRAWING IS A CONTROLLED DOCUMENT FOR AMP INCORPORATED. IT IS SUBJECT TO CHANGE AND THE CONTROLLING ENGINEERING ORGANIZATION SHOULD BE CONTACTED FOR THE LATEST REVISION.