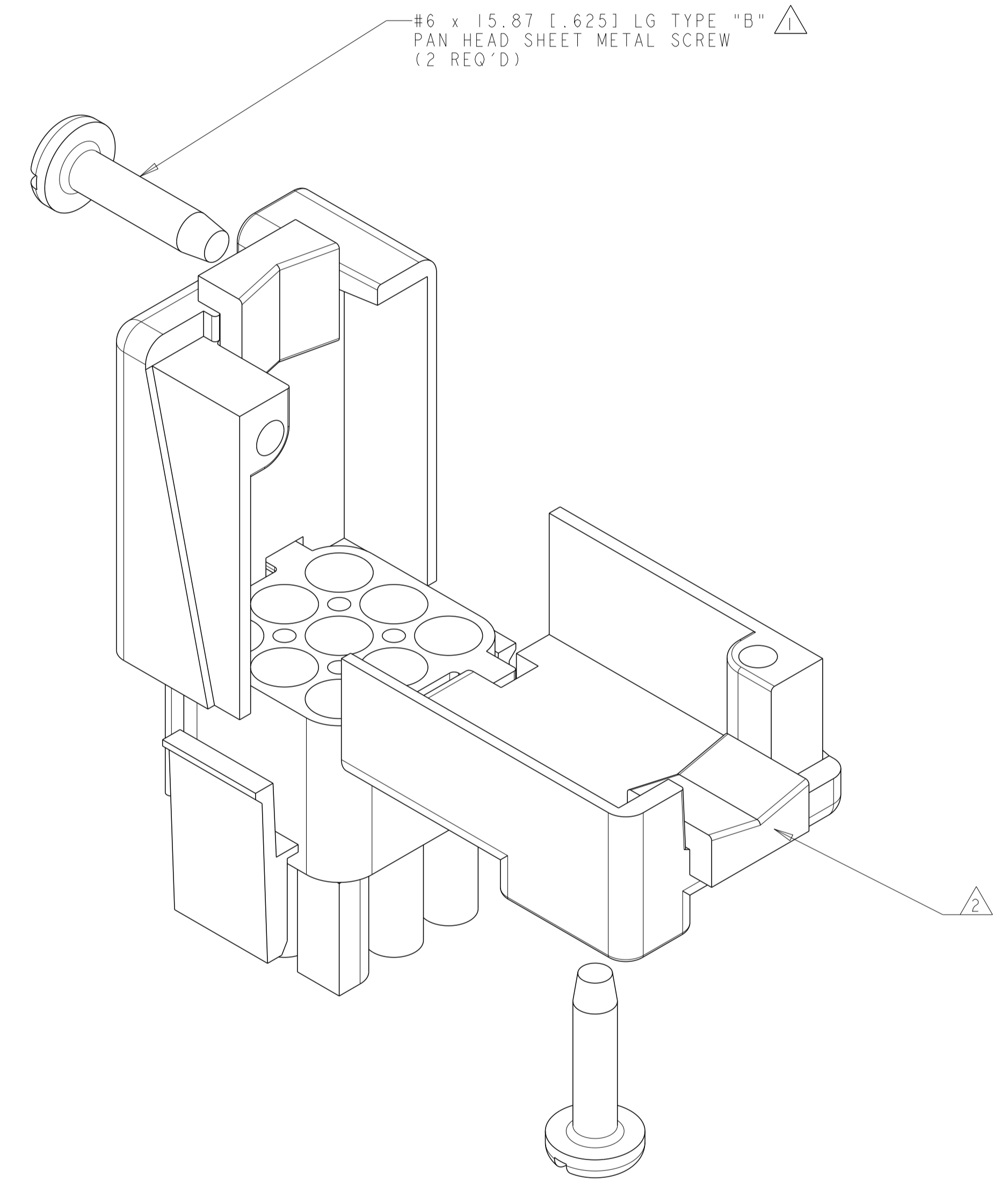
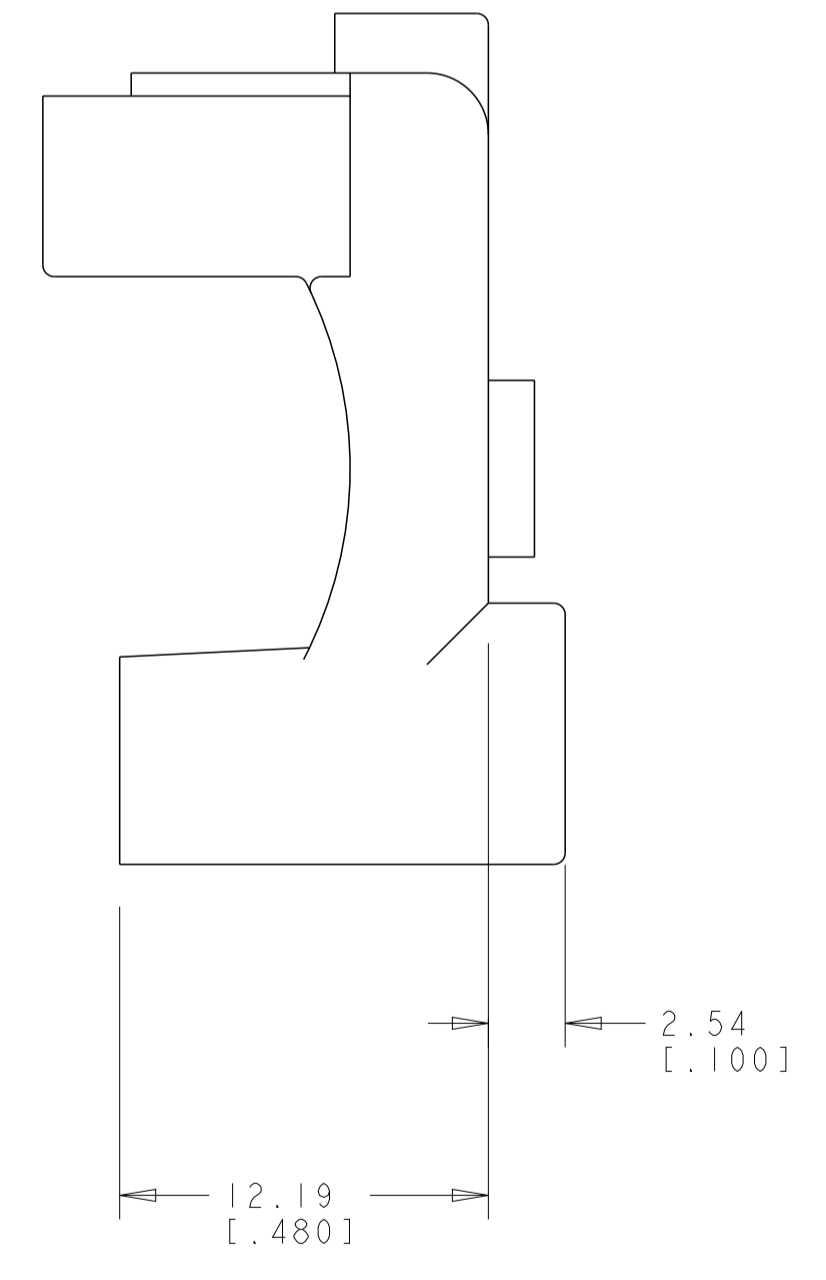
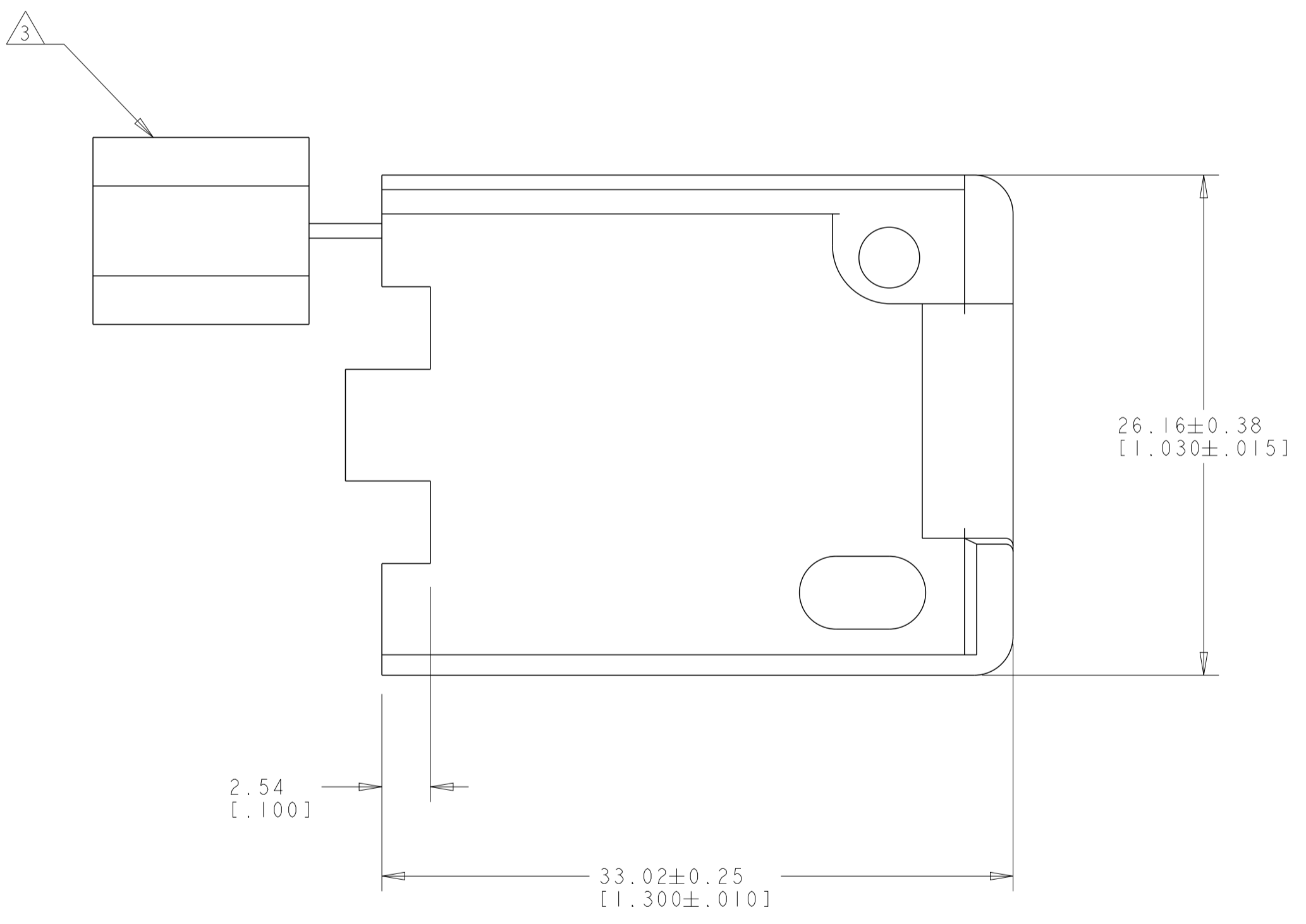
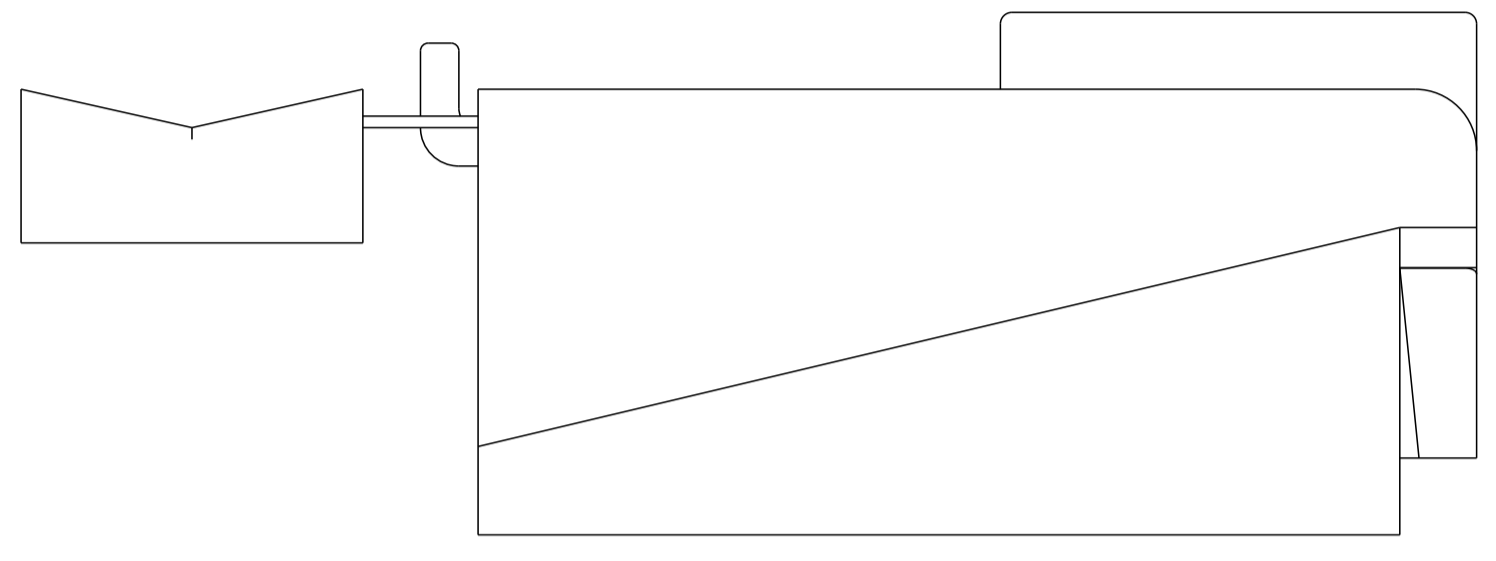


REVISIONS				
P	LTN	DESCRIPTION	DATE	APVD
C1		REVISED PER ECR-15-018109	23DEC2015	BW EW

- △ SHEET METAL SCREWS NOT SUPPLIED.
- △ INSERT IS ATTACHED TO STRAIN RELIEF AS AN ADDITIONAL ADJUSTMENT FOR SMALL WIRE BUNDLES. IT SHOULD BE CUT OFF AND POSITIONED AS SHOWN.
- △ TWO REQUIRED PER CONNECTOR.
- 4. DETACHABLE INSERT MAY SEPARATE FROM STRAIN RELIEF BODY DURING SHIPPING.



BLACK	NYLON UL94V-2	1-640722-9
NATURAL	NYLON UL94V-2	1-640722-0
COLOR	MATERIAL	PART NUMBER

THIS DRAWING IS A CONTROLLED DOCUMENT.		DWN K. WHITAKER 02APR04	TE Connectivity	
DIMENSIONS: mm [ INCHES ]		CHK S. RIDGILL 02APR04		
TOLERANCES UNLESS OTHERWISE SPECIFIED:		APVD S. RIDGILL 02APR04		
0 PLC ±	1 PLC ±	PRODUCT SPEC	NAME STRAIN-RELIEF AND INSERT, 9 CIRCUIT, UNIVERSAL MATE-N-LOK™	
2 PLC ±0.13 [ .005 ]	3 PLC ±	APPLICATION SPEC	SIZE CAGE CODE DRAWING NO RESTRICTED TO	
4 PLC ±	ANGLES ±	FINISH ±	A100779C=640722	
MATERIAL SEE TABLE	FINISH	WEIGHT	SCALE 4:1 SHEET 1 OF 1 REV C1	
CUSTOMER DRAWING				