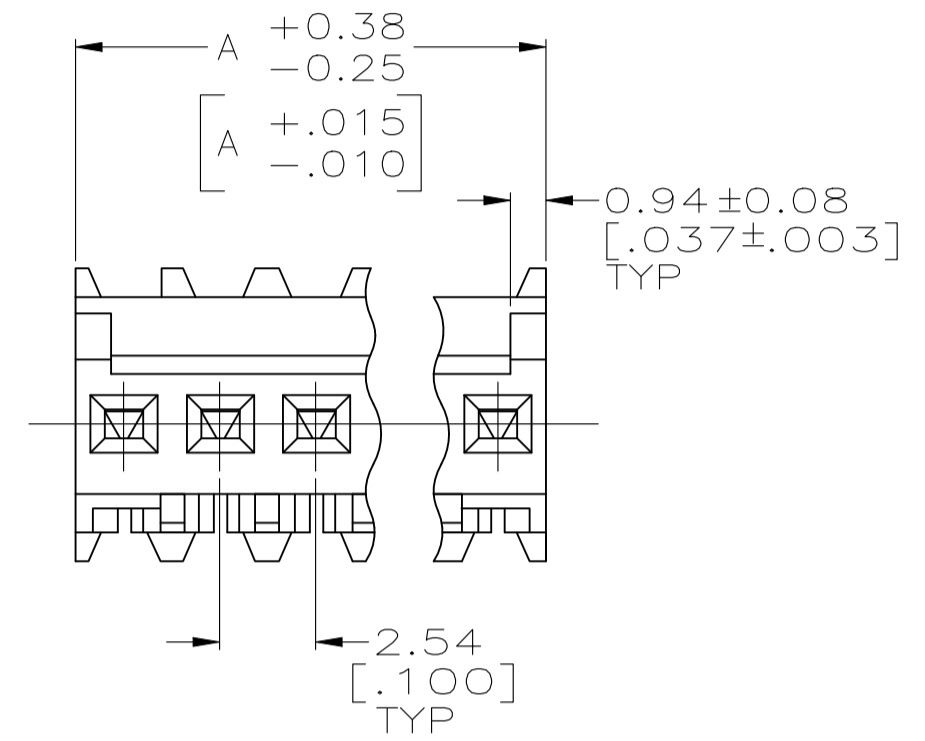
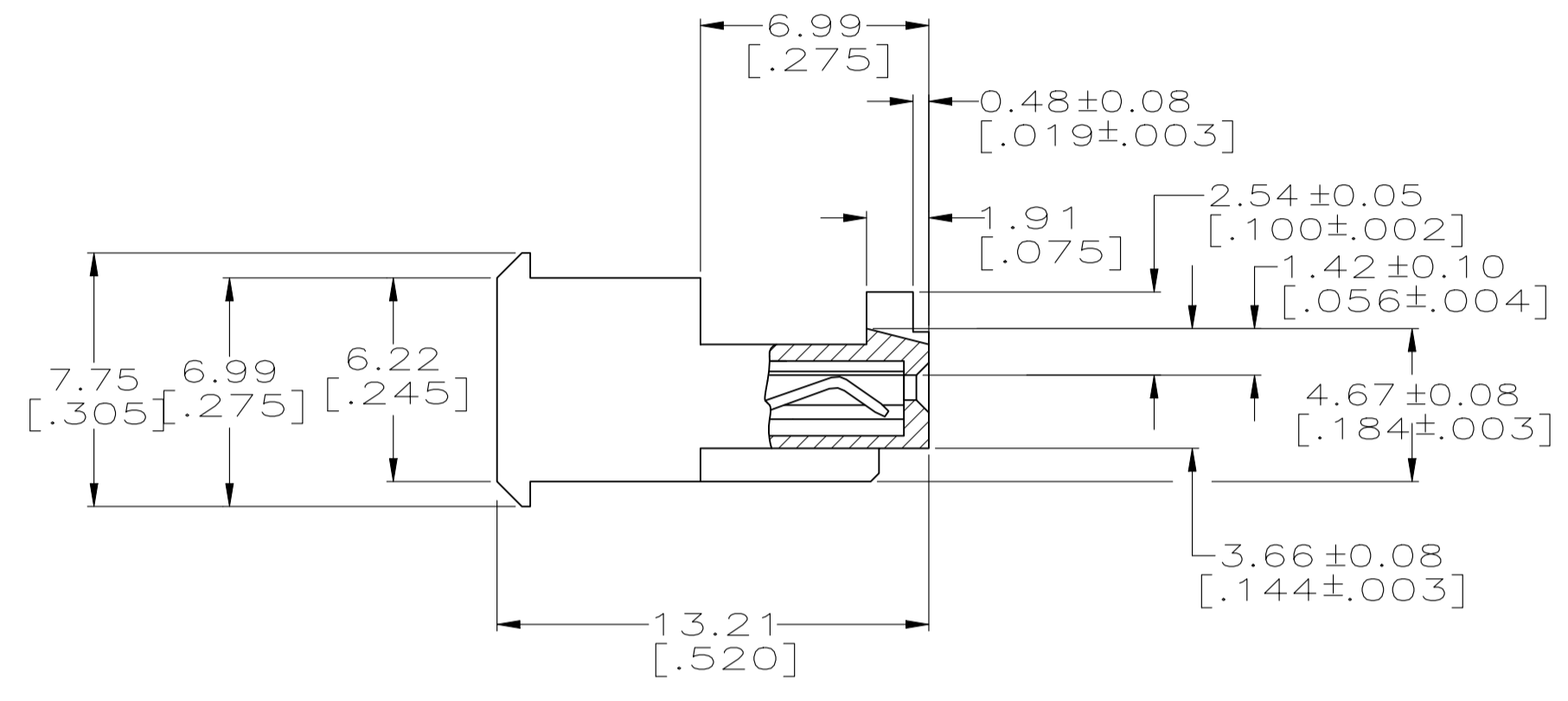
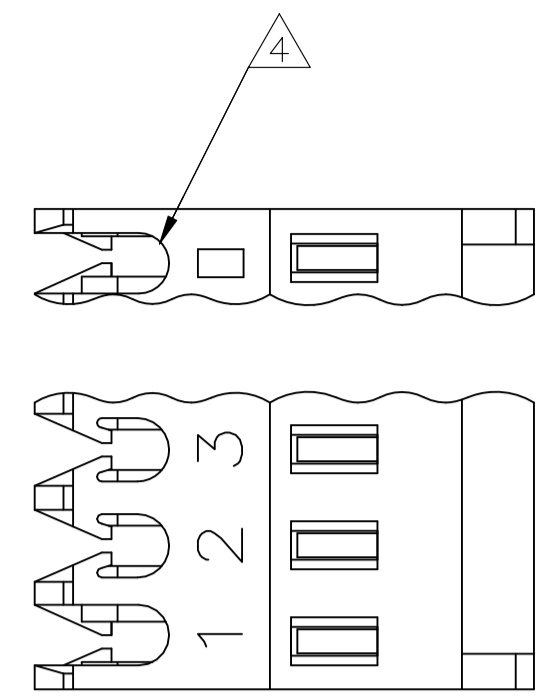


REVISIONS				
REV	DESCRIPTION	DATE	BY	APP'D
F1	REVISED PER ECR-23-179060	05SEP2023	AK	JP



- 1 MATERIAL: CONNECTOR-NYLON UL94V-2 (RED).  
CONTACTS-0.30 [.012] THICK COPPER ALLOY  
0.00038 [.000015] GOLD OR 0.00038 [.000015]  
TOTAL GOLD FLASH OVER PALLADIUM NICKEL.  
PER TE CONNECTIVITY'S DISCRETION, IN CONTACT AREA  
WITH BRIGHT TIN-LEAD FOR 641190-2 THRU  
2-641190-8, MATTE WHISKER MITIGATED TIN  
FOR 3-641190-2 THRU 5-641190-8 OVER  
NICKEL UNDERPLATE.
- 2 CONTACTS ACCEPT 22 AWG WIRE WITH 1.52 [.060] MAX  
INSULATION DIAMETER.
- 3 CONTACTS MUST ACCEPT 0.64±0.03 [.025±.001] SQUARE  
POST AND REMAIN LOCKED IN POSITION.
- 4 IDENTIFICATION NUMBER FOR LAST CIRCUIT MAY  
NOT APPEAR ON ALL ASSEMBLIES.
- 5 DIMENSIONS IN BRACKETS ARE IN INCHES.
- 6 HOUSING FEATURES ARE: FEED THRU WITH LOCKING  
RAMP AND WITH POLARIZING TAB.
- 7 OBSOLETE PARTS: OBSOLETE CIS STREAMLINING PER D.RENAUD/D.SINISI

DIM A	NO.OF POSN	ASSEMBLY
40.64 [1.600]	16	4-647477-6
38.10 [1.500]	15	4-647477-5
35.56 [1.400]	14	4-647477-4
33.02 [1.300]	13	4-647477-3
30.48 [1.200]	12	4-647477-2
27.94 [1.100]	11	4-647477-1
25.40 [1.000]	10	4-647477-0
22.86 [.900]	9	3-647477-9
20.32 [.800]	8	3-647477-8
17.78 [.700]	7	3-647477-7
15.24 [.600]	6	3-647477-6
12.70 [.500]	5	3-647477-5
10.16 [.400]	4	3-647477-4
7.62 [.300]	3	3-647477-3
5.08 [.200]	2	3-647477-2
DIM A	NO.OF POSN	ASSEMBLY

OBSOLETE

OBSOLETE

- △ SUPERSEDED BY 4-647477-6
- △ SUPERSEDED BY 4-647477-5
- △ SUPERSEDED BY 4-647477-3
- △ SUPERSEDED BY 3-647477-5

DIM A	NO.OF POSN	ASSEMBLY
40.64 [1.600]	16	1-647477-6
38.10 [1.500]	15	1-647477-5
35.56 [1.400]	14	1-647477-4
33.02 [1.300]	13	1-647477-3
30.48 [1.200]	12	1-647477-2
27.94 [1.100]	11	1-647477-1
25.40 [1.000]	10	1-647477-0
22.86 [.900]	9	—647477-9
20.32 [.800]	8	647477-8
17.78 [.700]	7	647477-7
15.24 [.600]	6	647477-6
12.70 [.500]	5	647477-5
10.16 [.400]	4	647477-4
7.62 [.300]	3	647477-3
5.08 [.200]	2	647477-2
DIM A	NO.OF POSN	ASSEMBLY

THIS DRAWING IS A CONTROLLED DOCUMENT.

DIMENSIONS: mm [INCHES]	TOLERANCES UNLESS OTHERWISE SPECIFIED:	DIN S. HOOVER 20-DEC-2004	CHK: D. BOSSI 20-DEC-2004	APPRO: D. BOSSI 20-DEC-2004	NAME: MTA .100 CONNECTOR ASSEMBLY 22 AWG, STANDARD
0 PLC ±	1 PLC ±	2 PLC ±	3 PLC ±	4 PLC ±	ANGLES ±
FINISH		WEIGHT		SCALE: 5:1 SHEET 1 OF 1 REV F1	

CUSTOMER DRAWING