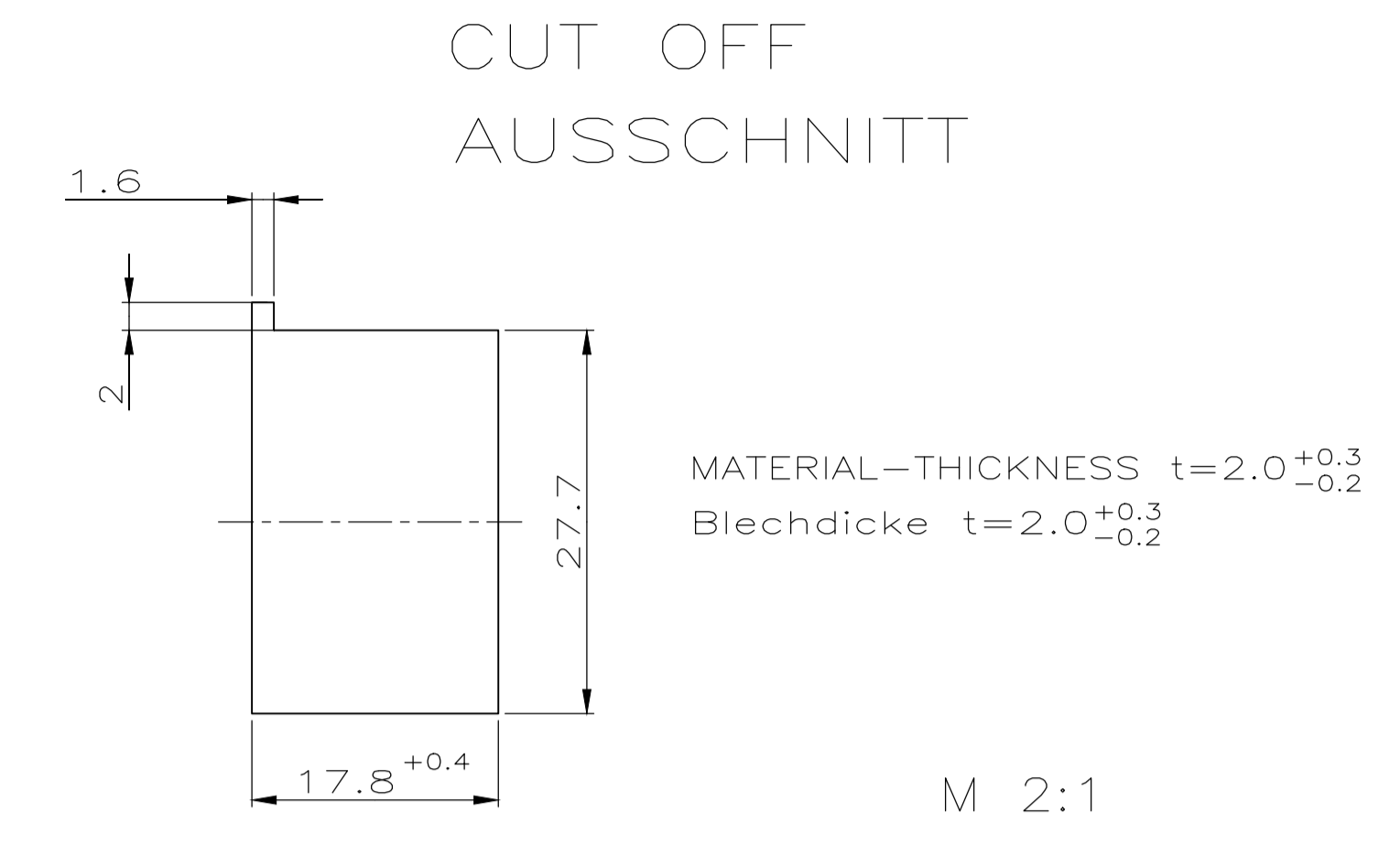
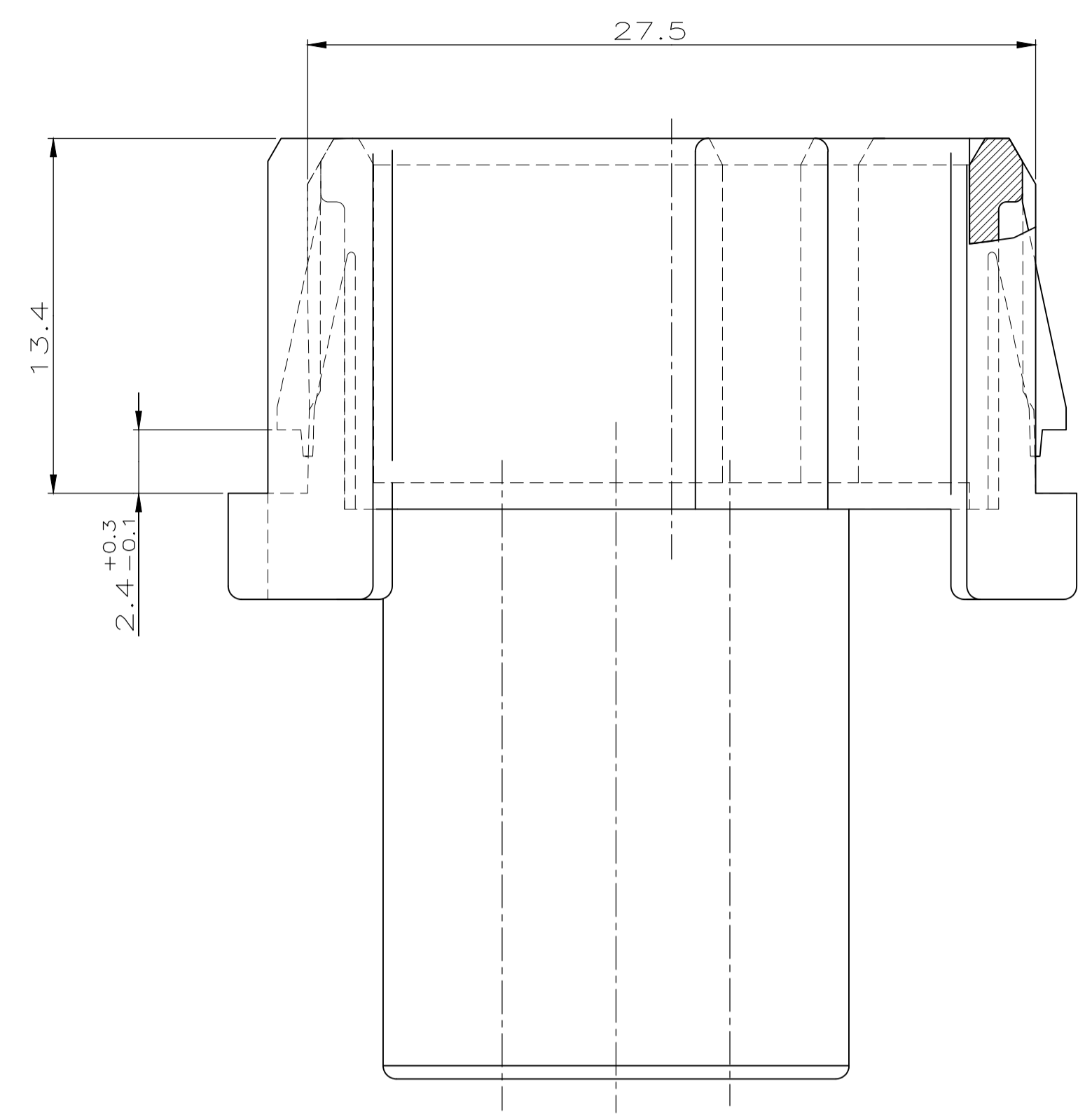
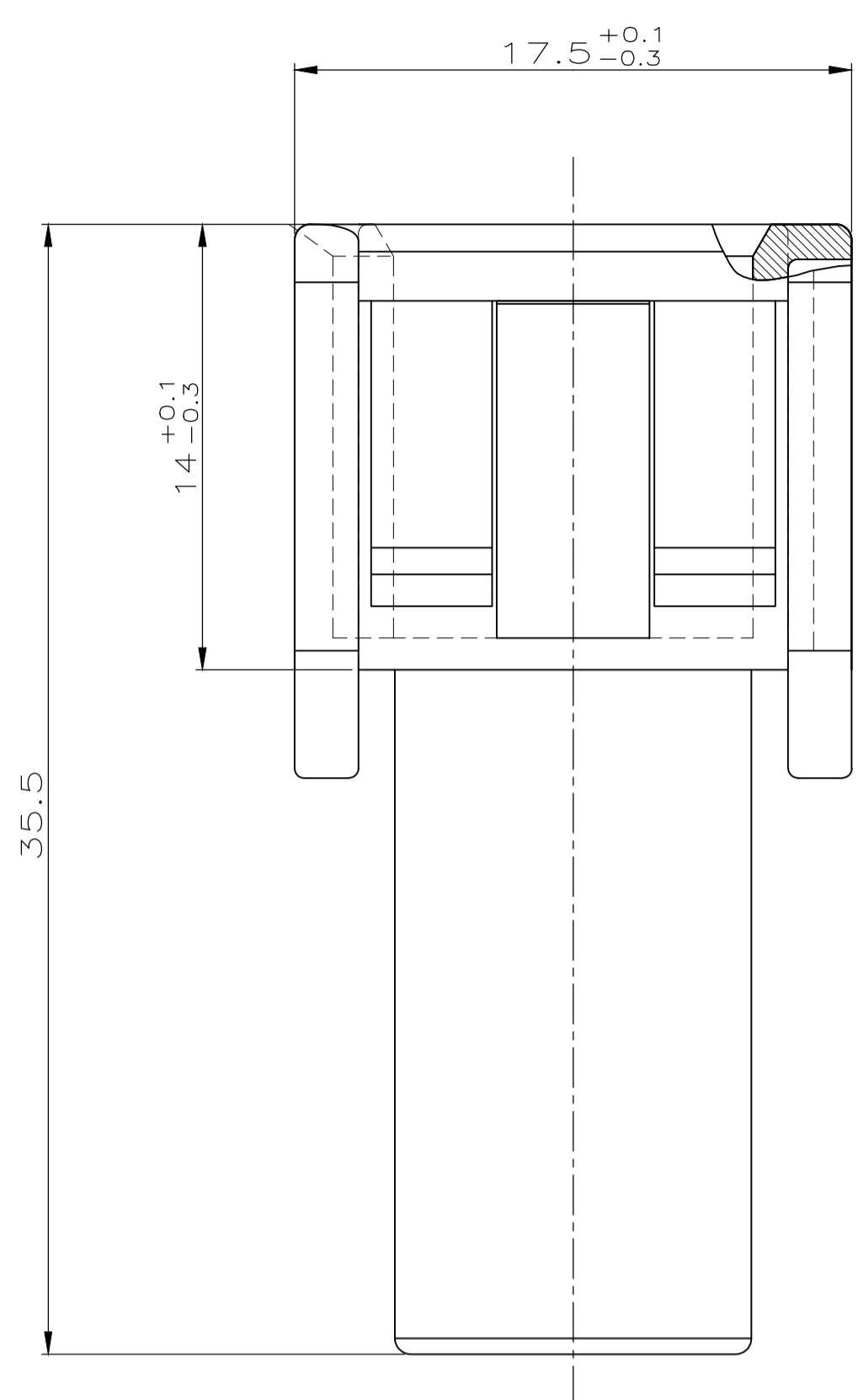
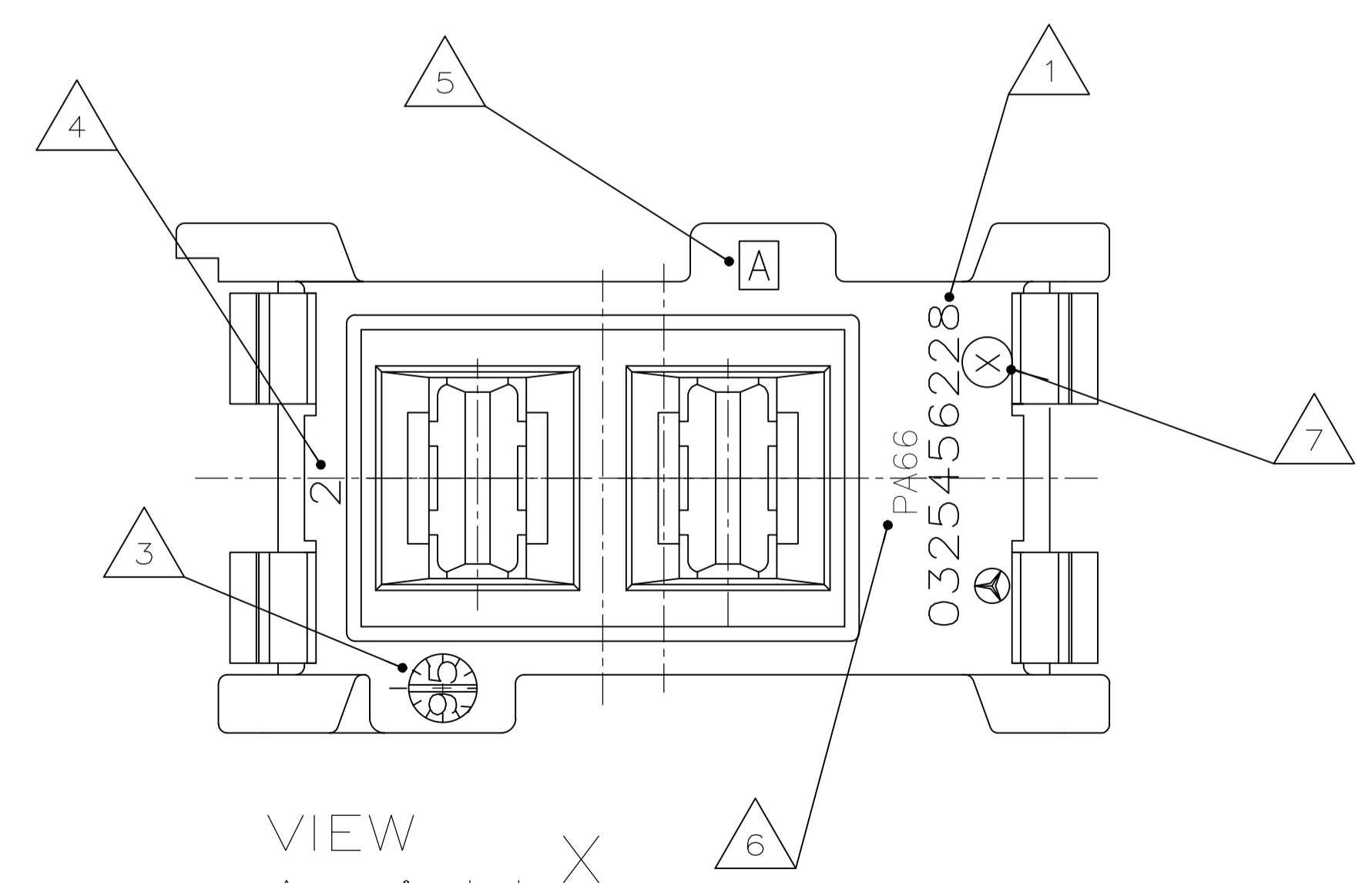
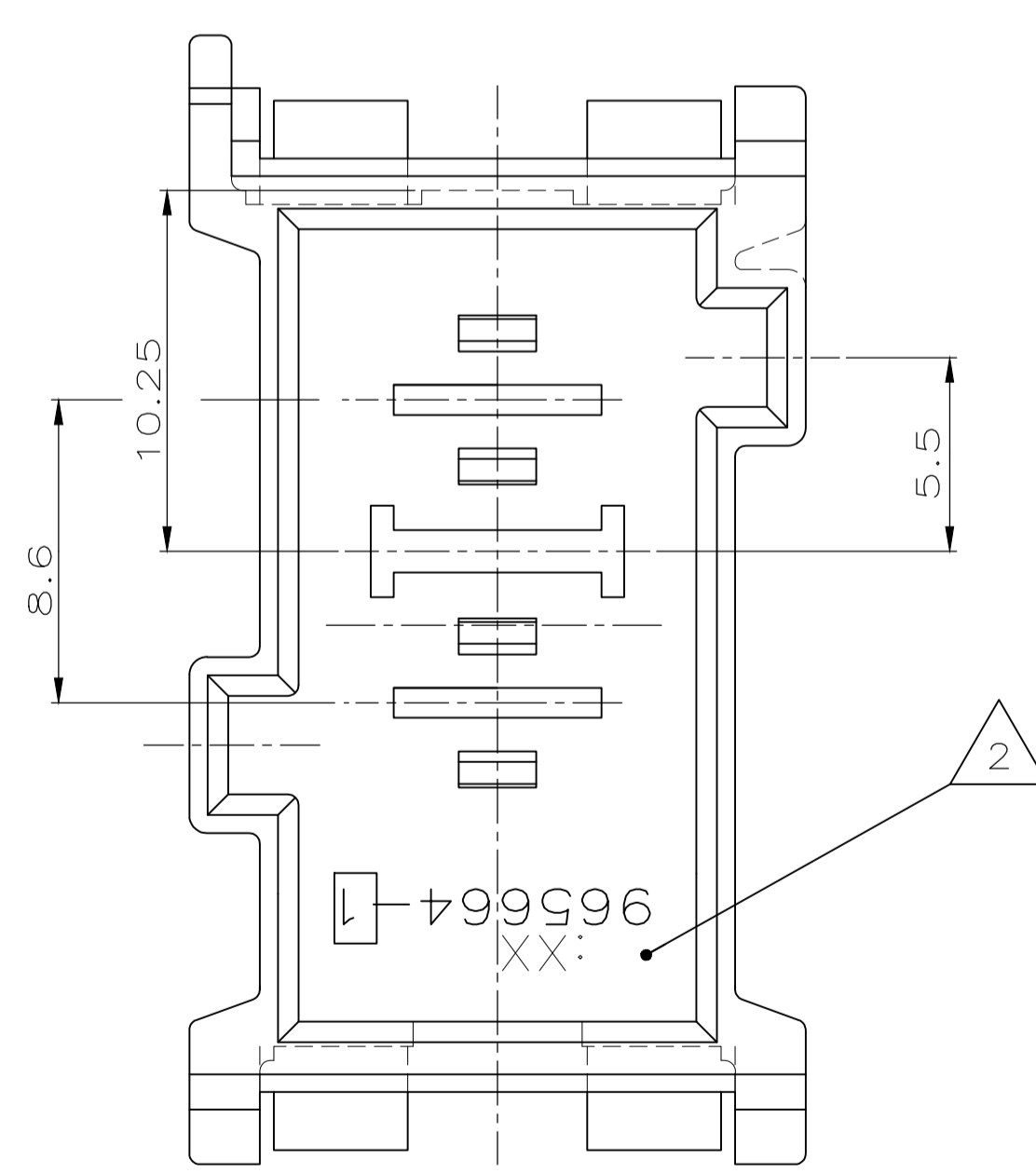


LOC	DIST	REV	DATE	BY	CHK	APVD
A1	-	A3	16OCT12	Moh	Krou	
		A4	16FEB16	Ho.	Scho.	



X ↑



VIEW
Ansicht X

- 1
- 2 LOGO, PARTNUMMER
Logo und Bestell-Nr.
- 3 PRODUCTION-DATE
Produktionsdatum
- 4 CAVITY IDENTIFICATION
Kammerbezeichnung
- 5 THE REVISION STATUS OF THE MOULD
Aenderungszustand des Werkzeuges
- 6 MATERIAL-MARKING
Werkstoffkennzeichnung
- 7 CAVITY MARKING
Nestmarkierung
- 8 FOR USED 5.8mm TAB CONTACT,
SEE DRAWING: 88-52088-1
zu verwendender 5.8mm Tab Kontakt,
siehe Zeichnung: 88-52088-1

<small>THIS DRAWING IS A CONTROLLED DOCUMENT THE AMP PROPRIETARY. IT IS SUBJECT TO CHANGE AND THE CONTROLLING ENGINEERING DEPARTMENT SHOULD BE CONTACTED FOR THE LATEST REVISION. DIESES ZEICHNUNGSDOKUMENT WIRD DURCH AMP INCORPORATED KONTROLLIERT. AENDERUNGEN DES DOKUMENTS SOLLTEN MIT DER INGENIEURABTEILUNG DER AMP ABGEKLAERT WERDEN. AENDERUNGSNUMMERN SOLLTEN IN DIESEM ZEICHNUNGSDOKUMENT ANGEZEIGT WERDEN.</small>		DWN A. Kiltz	14.JUL.98	
<small>OTHERWISE SPECIFIED: ALLEGEMENTOLTERANZEN n. ISO 8015</small>		CHK J. Hoss	14.JUL.98	
<small>DIMENSIONS: mm</small>		<small>APVD</small>		5.8 TAB HOUSING, 2POS. FOR 6mm ² CABLE 5.8 Tab-Geh., 2pol. fuer 6mm ² Leitung
<small>0 PLC ±0.2 1 PLC ±0.2 2 PLC ±0.2 3 PLC ±</small>		<small>NAME</small>		
<small>MATERIAL</small>		<small>SIZE</small>		RESTRICTED TO NUR FÜR
<small>FINISH/OBERFLAECHE/FARBE</small>		<small>TECHNINGS-NR.</small>		
<small>WEIGHT GEWICHT</small>		<small>RESTRICTED CUSTOMER /SONDERZEICHNUNG</small>		A100779 965664
<small>BASESTAB 5:1</small>		<small>BLATT 1 VON 1</small>		REV A4