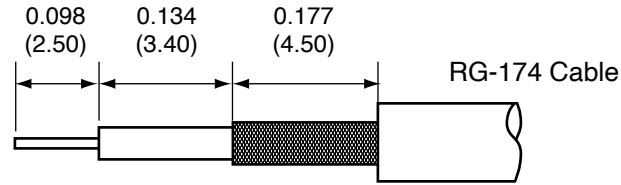
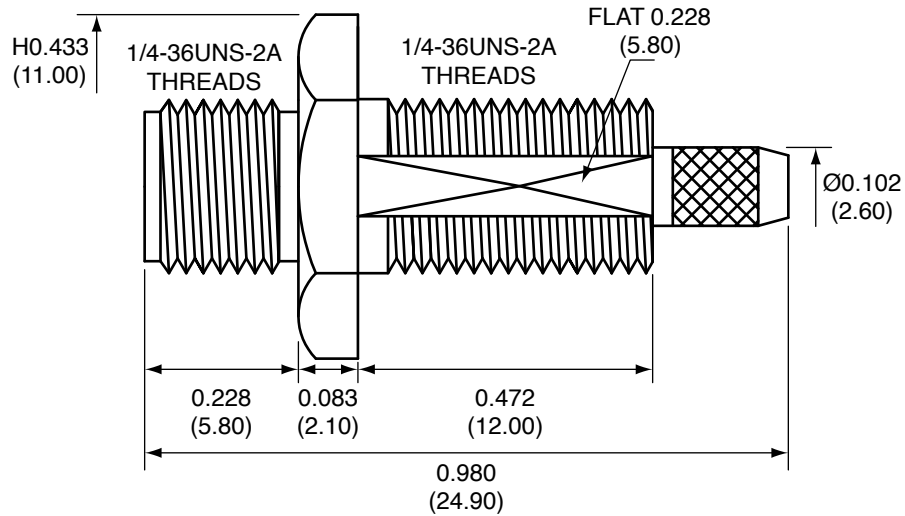


| Description | Material | Finish |
|-------------|------------|--------|
| Body | Brass | Nickel |
| Socket | BE CU | Gold |
| Insulation | PTFE | N/A |
| Crimp Ring | Brass | Nickel |
| O Ring | SI Rubber | Rubber |
| Washer | Brass | Nickel |
| Nut | Brass | Nickel |
| Heat Shrink | Polyolefin | Black |

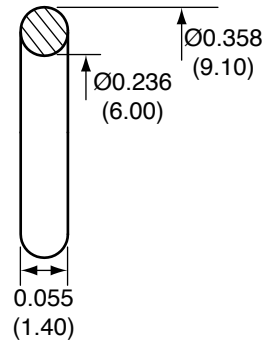


RECOMMENDED CABLE STRIPPING DIMENSIONS

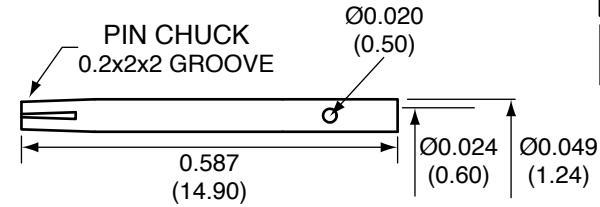
| REVISIONS | | | |
|-----------|---|-----------|------|
| REV | DESCRIPTION | DATE | APPV |
| B | Add assembly instructions and heat shrink | 1/8/10 | CJ |
| C | Updated dimensions; Added new title block | 10-JUL-12 | BPM |



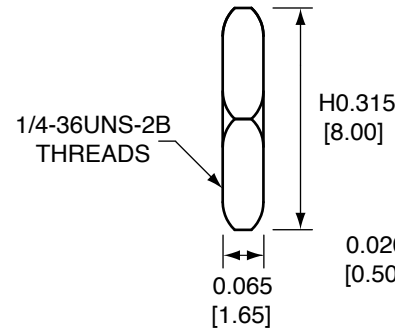
SIDE VIEW



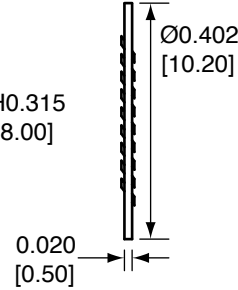
O-RING



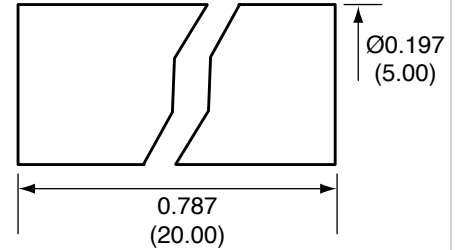
SOCKET



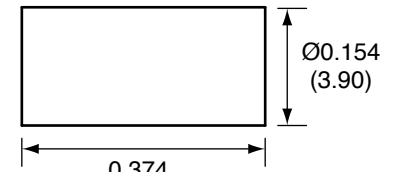
NUT



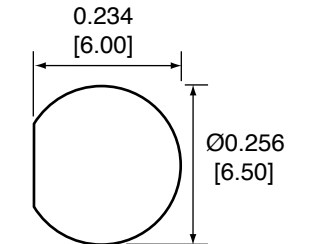
WASHER



HEAT SHRINK



CRIMP RING



RECOMMENDED MOUNTING HOLE

NOTES: (UNLESS OTHERWISE SPECIFIED)

1. ALL DIMENSIONS ARE IN INCHES [mm].
2. DIMENSIONS APPLY AFTER FINISHING.
3. MANUFACTURE TO BE COMPLIANT WITH EU RoHS DIRECTIVE.
4. SAFETY BREAK ALL SHARP CORNERS AND EDGES .02 MAXIMUM.

CONSMSA015 ASSEMBLY INSTRUCTIONS

1. Solder the socket to the center conductor or crimp with 0.028" hex crimp tool.
2. Insert the socket, center conductor, and insulation into the body.
3. Wrap the braid around the tail of the body and crimp the ring with a 0.128" hex crimp tool (or one labeled for use with RG-174 cable).
4. Slide heat shrink tubing over crimp ring and then heat.

©2023 TE Connectivity. All Rights Reserved.

WARNING: THIS DRAWING CONTAINS PROPRIETARY INFORMATION THAT IS THE SOLE PROPERTY OF LINX TECHNOLOGIES, AND SHALL BE TREATED AS SUCH. NO DISCLOSURE OR REPRODUCTION OF THIS DOCUMENT IS PERMITTED, IN WHOLE OR IN PART, WITHOUT THE EXPRESS WRITTEN PERMISSION OF LINX TECHNOLOGIES OR ITS DESIGNATED AGENTS.

| | | |
|-----------|--|-----------------|
| MATERIAL: | TOLERANCES: .020 [0.50]-.200 [5.00]= ±.008 [0.20] .200 [5.00]-1.200 [30.00]= ±.016 [0.40] 1.20 [30.0]-4.75 [120.0]= ±.024 [0.60] 4.75 [120.0]-12.40 [315.0]= ±.040 [1.0] | PROJECTION: |
| FINISH: | DRAWN: B.MURPHY DT: 10-JUL-12 | ANGLES: ±1° |
| | ENGR: S.HOGAN DT: 10-JUL-12 | |



TITLE:
SMA FEMALE BULKHEAD MOUNT CABLE
END CRIMP WITH O-RING FOR RG174 CABLE

| | | |
|------------------|------------------------|-----------------|
| SIZE A | DWG. NO. CONSMSA015 | REV C |
| SCALE: 2:1 | DO NOT SCALE DRAWING | SHEET 1 OF 1 |