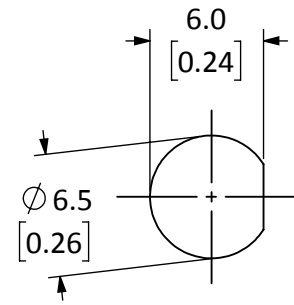
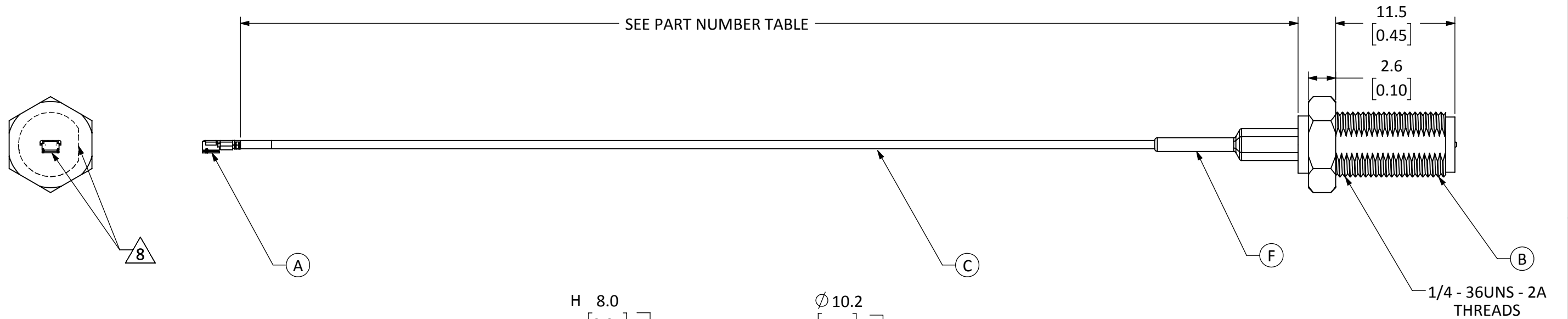


ITEM	DESCRIPTION	MATERIAL	FINISH
A	MHF PLUG TYPE III	BRASS	GOLD
B	RP-SMA FEM. BULKHEAD MOUNT CONNECTOR	BRASS	GOLD
C	CABLE	0.81mm COAXIAL	BLACK
D	NUT	BRASS	GOLD
E	WASHER	BRASS	GOLD
F	HEAT SHRINK TUBING	POLYOLEFIN	BLACK

REVISIONS			
REV	DESCRIPTION	DATE	APPV
A	INITIAL RELEASE OF LINX INTERNAL DRAWING	13-NOV-19	CLL



RECOMMENDED MOUNTING HOLE

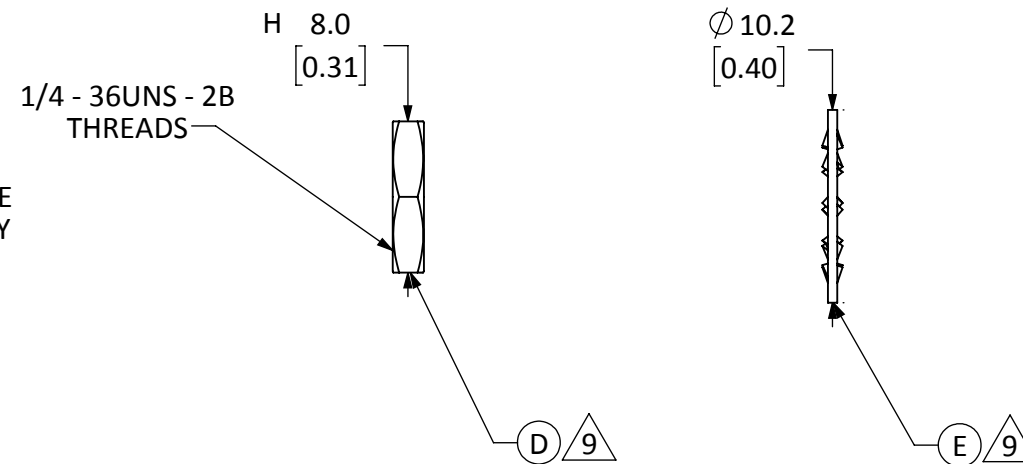


NOTES: (UNLESS OTHERWISE SPECIFIED)

- ALL DIMENSIONS ARE IN MILLIMETERS [INCHES].
- DIMENSIONS APPLY AFTER FINISHING.
- MANUFACTURE TO BE COMPLIANT WITH EU RoHS DIRECTIVE, USE MATERIALS THAT DO NOT CONTAIN REACH SUBSTANCES OF VERY HIGH CONCERN >1000ppm, AND USE DRC CONFLICT-FREE SOURCED MATERIALS.
- MINIMUM FREQUENCY RANGE: DC TO 6GHz.
- CABLE ASSEMBLY SPECIFICATIONS:
  - CHARACTERISTIC IMPEDANCE:  $50\Omega \pm 3\Omega$
  - INSERTION LOSS: 100mm - 0.37Vf IN GHz TYP.  
200mm - 0.68Vf IN GHz TYP.
- CONNECTOR TO BE APPLIED IN ACCORDANCE WITH CONNECTOR SUPPLIER RECOMMENDED PROCEDURE.
- TORQUE SPECIFICATIONS:
  - BULKHEAD MOUNTING NUT TORQUE: 7 TO 10 in-lbs.
  - RECOMMENDED MATING TORQUE: 7 TO 10 in-lbs.

8 CONNECTORS TO BE ORIENTED WITH MHF3 CONNECTOR MATING FACE 90° CLOCKWISE FROM BULKHEAD CONNECTOR THREAD FLAT FACE, AS SHOWN.

9 INSTALL WASHER (ITEM E) AND NUT (ITEM D) ONTO CONNECTOR BODY (ITEM B).



PART NUMBER	CABLE LENGTH
CSJ-RGFB-100-MHF3	100mm ± 1.5mm
CSJ-RGFB-200-MHF3	200mm ± 3.0mm

WARNING: THIS DRAWING CONTAINS PROPRIETARY INFORMATION THAT IS THE SOLE PROPERTY OF LINX TECHNOLOGIES, AND SHALL BE TREATED AS SUCH. NO DISCLOSURE OR REPRODUCTION OF THIS DOCUMENT IS PERMITTED, IN WHOLE OR IN PART, WITHOUT THE EXPRESS WRITTEN PERMISSION OF LINX TECHNOLOGIES OR ITS DESIGNATED AGENTS.

MATERIAL:	TOLERANCES: 0.50 [0.020]-5.00 [0.200] = +0.20 [0.008] 5.00 [0.200]-30.00 [1.200] = +0.40 [0.016] 30.0 [1.20]-120.0 [4.75] = +0.60 [0.24] 120.0 [4.75]-315.0 [12.40] = +1.0 [0.040]	PROJECTION: 
FINISH:	DRAWN: B.MURPHY DT: 23-SEP-19 ENGR: D.VARATHARAJAN DT: 13-NOV-19	ANGLES: ±1°

TITLE: <b>CBL ASSEMBLY, MHF3 TO FEM. BLKHD RP-SMA, 0.81mm CBL</b>		
SIZE <b>B</b>	DWG. NO. <b>CSJ-RGFB-***-MHF3</b>	REV <b>A</b>
SCALE: 2.5:1 DO NOT SCALE DRAWING		SHEET 1 OF 1