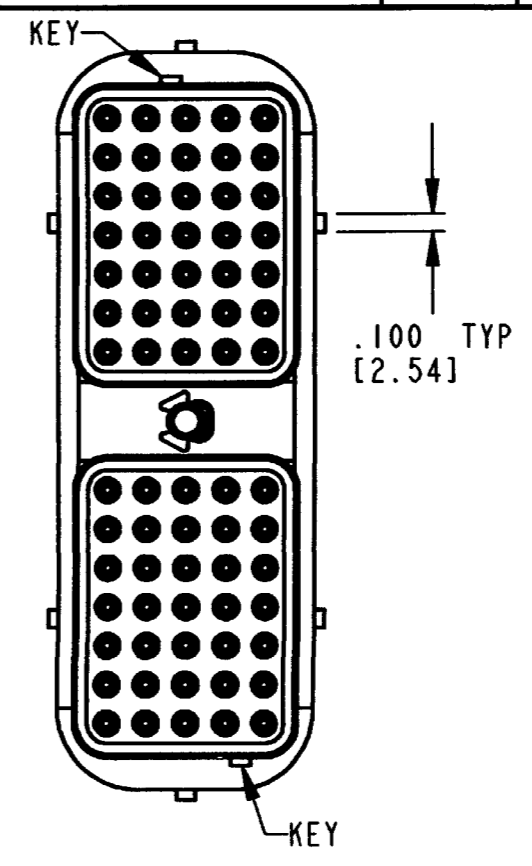
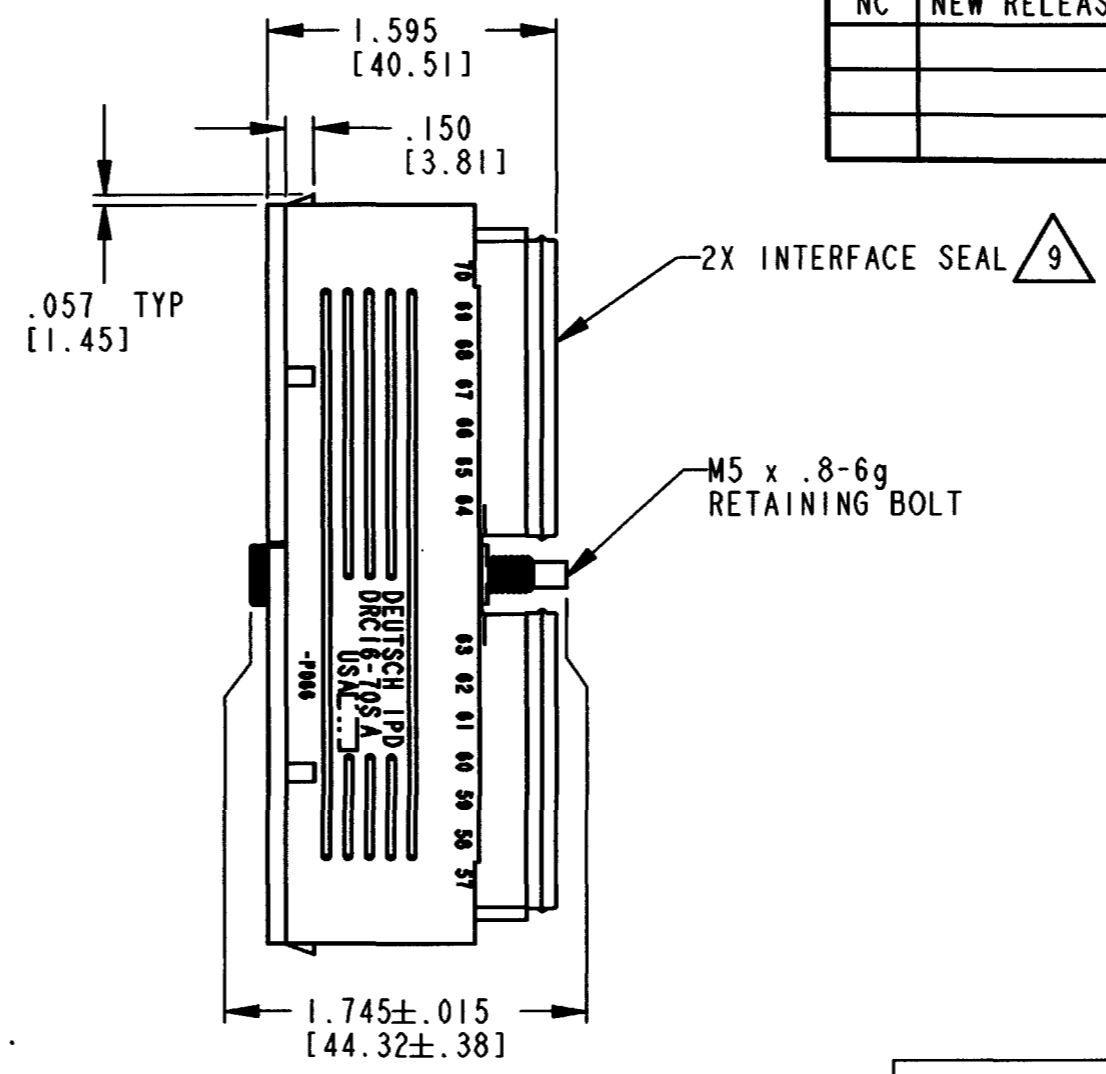
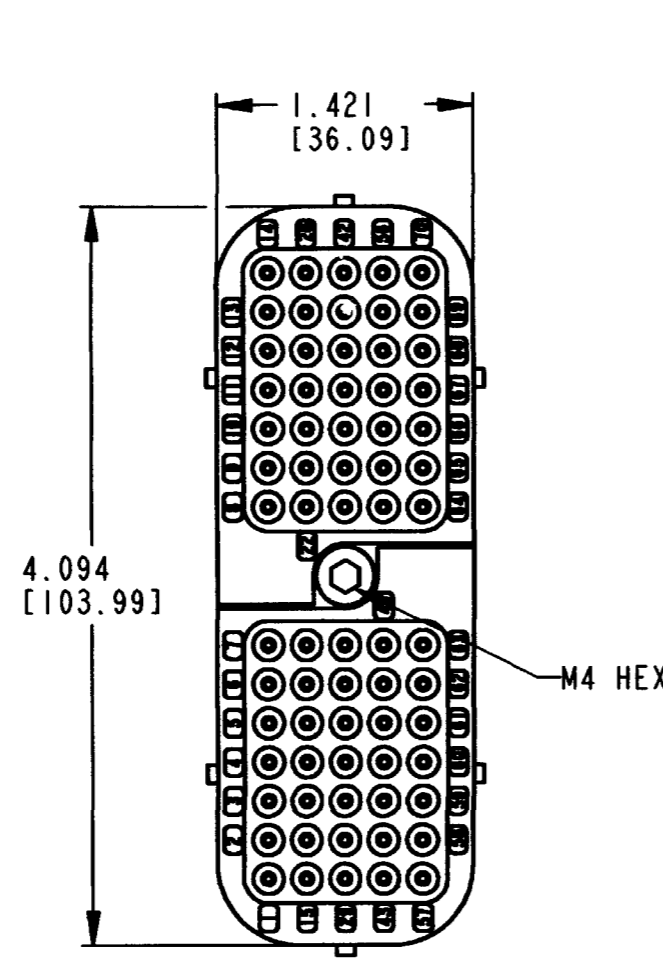


REV
NC DRC16-70S*P066

REVISIONS			
SYM	DESCRIPTION	DATE	APPROVED
NC	NEW RELEASE PER E.O. P20095	12-19-08	RDR



- 8. MATING TORQUE REQUIREMENT: 25-28 IN-LB [2.82-3.16 Nm].
 - 7. SEE SHEET 2 FOR OTHER KEY ARRANGEMENTS.
 - 6. MATERIAL - PLUG: PLASTIC (BLACK); SEAL/GROMMET: RUBBER; BOLT/CLIP: STEEL.
 - 5. THIS PLUG MATES WITH DRC12-70P*-****; DRC13-70P*-****; DRC14-70P*-**** RECEPTACLE. (* = A,B,C,D KEYS; **** = ALL MODIFICATIONS) CONSULT FACTORY FOR MODS.
- 4 FOR CONTACT AND WIRE PERFORMANCE AND APPLICATION CHARACTERISTICS, SEE ENVELOPE DRAWING 0425-015-0000.
- 3. PLUG IS SUPPLIED WITH DUST CAP (NOT SHOWN).
 - 2. DIMENSION TOLERANCE: ±.025 [.64].
 - 1. DIMENSIONS ARE IN INCHES [mm].
- NOTES: UNLESS OTHERWISE SPECIFIED

MIN. INSUL. O.D.	MAX. INSUL. O.D.	WIRE RANGE [mm ²] REF ONLY 4
.100 [2.54]	.134 [3.40]	14-20 AWG [2.0-0.50]

9 PART MODIFICATION.

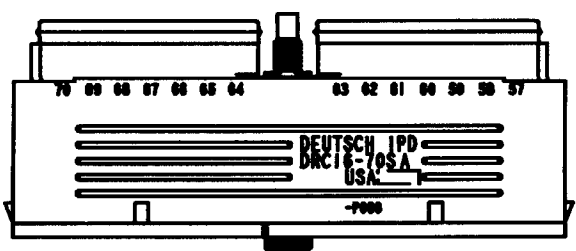
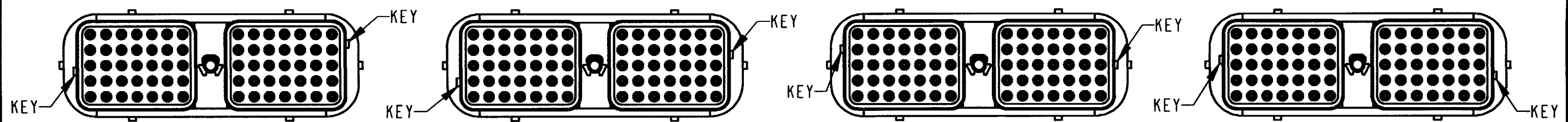
SIGNATURE & DATE	
DR	J. APOSTOL 17DEC2008
CHK	[Signature] 12/18/08
PE	[Signature] 12/18/08
APPD	R. Reed 12-19-08
SCALE	NONE WT

PLUG
70 SIZE 16
KEYS: A,B,C,D
COLOR: BLACK
DRC SERIES

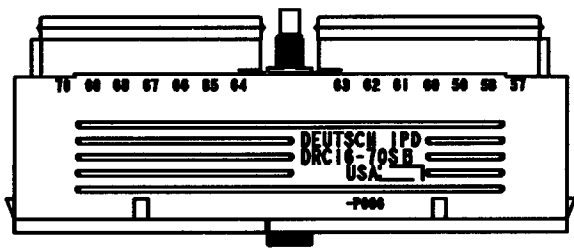
ENVELOPE

EP	MATL. CODE
3850 INDUSTRIAL AVE. HEMET, CA 92545	
DRC16-70S*P066	
DWG SIZE	CODE 11139 SHEET 1 OF 2

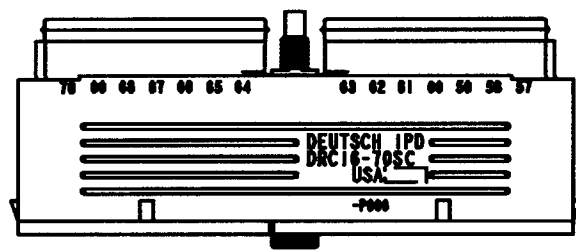
REV	DRC16-70S*P066	REVISIONS			
NC		SYM	DESCRIPTION	DATE	APPROVED
		NC	-SEE SHEET 1-	12-19-08	RR



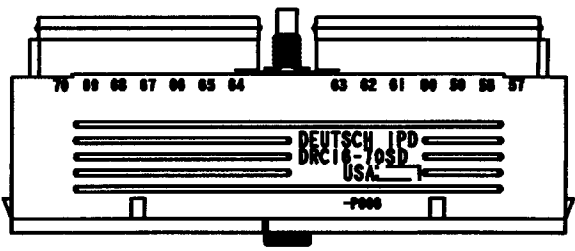
DRC16-70SA-P066
KEY ARRANGEMENT -A-



DRC16-70SB-P066
KEY ARRANGEMENT -B-



DRC16-70SC-P066
KEY ARRANGEMENT -C-



DRC16-70SD-P066
KEY ARRANGEMENT -D-

NOTES:

SIGNATURE & DATE		PLUG 70 SIZE 16 KEYS: A,B,C,D COLOR: BLACK DRC SERIES	EP	MATL. CODE
DR	J. APOSTOL 17DEC2008		3850 INDUSTRIAL AVE. HEMET, CA 92545	
CHK	<i>[Signature]</i> 12/18/08		DEUTSCH INDUSTRIAL	
PE	<i>[Signature]</i> 12/18/08		B DRC16-70S*P066	
APPD	<i>[Signature]</i> 12-19-08		DWG SIZE	CODE 11139
SCALE	NONE WT	ENVELOPE		