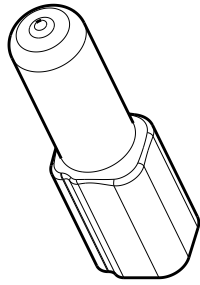
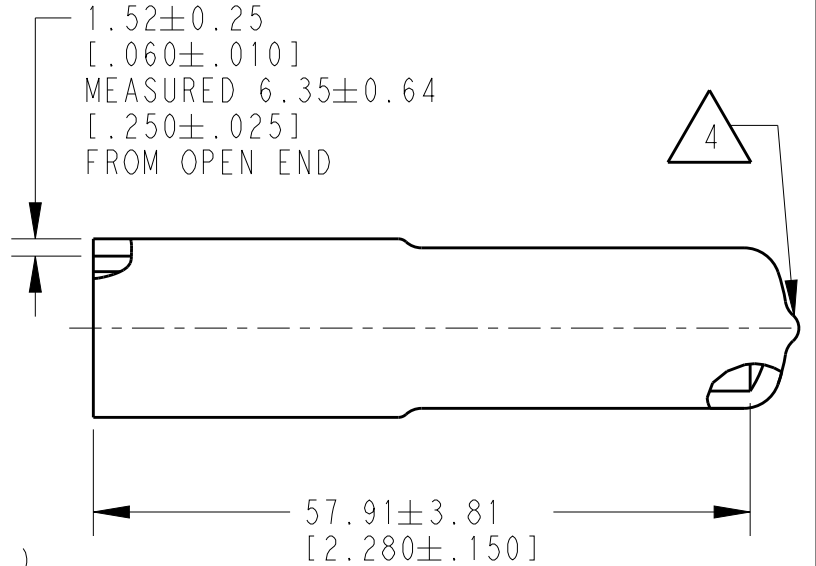
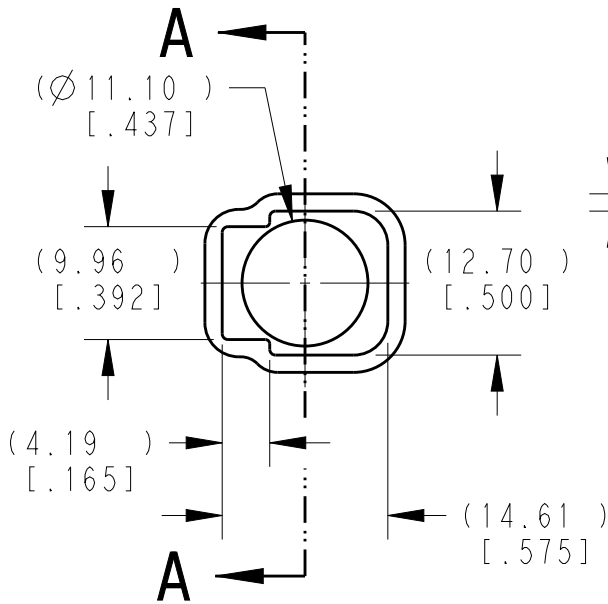


REVISIONS

P	LTR	DESCRIPTION	DATE	DWN	APVD
	A1	REVISED PER ECO-15-003782	10MAR2015	PS	DM
	A2	REVISED PER PCN E-18-006793	03MAY2018	SM	DM
	A3	REVISED PER PCN E-19-009112	10JUN2019	JA	IG
	A4	REVISED PER PCN E-19-014641	16OCT2019	JA	IG



SCALE 3:4



SECTION A-A

4 SMALL MATERIAL EXTENSION IS ACCEPTABLE ON THIS END ALL AROUND.

3. THIS ACCESSORY PART IS PROVIDED WITHOUT TYPICAL TRANSPORTATION INDUSTRY PROCESS CONTROLS. NO VALIDATION TESTING HAS BEEN PERFORMED. CUSTOMER IS RESPONSIBLE FOR DETERMINING PRODUCT PERFORMANCE AND SUITABILITY FOR APPLICATION.
2. TEMPERATURE RATING: -29°C TO $+100^{\circ}\text{C}$ [-20°F TO $+212^{\circ}\text{F}$]
1. THIS PART IS USED ON DT06-2S PLUG WITH ANY MODIFICATION THAT DOES NOT INCLUDE AN END CAP.

NOTES:

TE INTERNAL PN	DEUTSCH PN
DT2S-BT	DT2S-BT

2019 RELEASED FOR PUBLICATION ALL RIGHTS RESERVED. BY TE CONNECTIVITY COPYRIGHT 2014 THIS DRAWING IS UNPUBLISHED.

DIMENSIONS:	
mm	[INCHES]
TOLERANCES UNLESS OTHERWISE SPECIFIED:	
0 PLC	\pm
1 PLC	\pm
2 PLC	± 0.63 [.025]
3 PLC	\pm
4 PLC	\pm
ANGLES	$\pm 5^{\circ}$

DWN	D.MEYER	10JUN2014
CHK	R.MESSENGER	10JUN2014
APVD	D.MEYER	10JUN2014
PRODUCT SPEC	-	
APPLICATION SPEC	-	
WEIGHT	4.75 g	

MATERIAL	PVC	FINISH	GRAY
TE Connectivity			
NAME			
BOOT, PLUG, 2 PIN			
DT SERIES			
SIZE	CAGE CODE	DRAWING NO	RESTRICTED TO
A4	4AFU8	C=DT2S-BT	-

CUSTOMER DRAWING	SCALE	3:2	SHEET	1 OF 1	REV	A4
------------------	-------	-----	-------	--------	-----	----