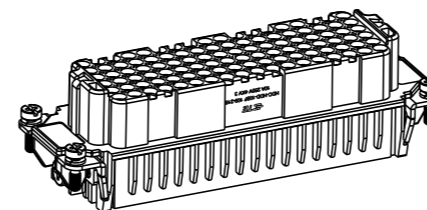
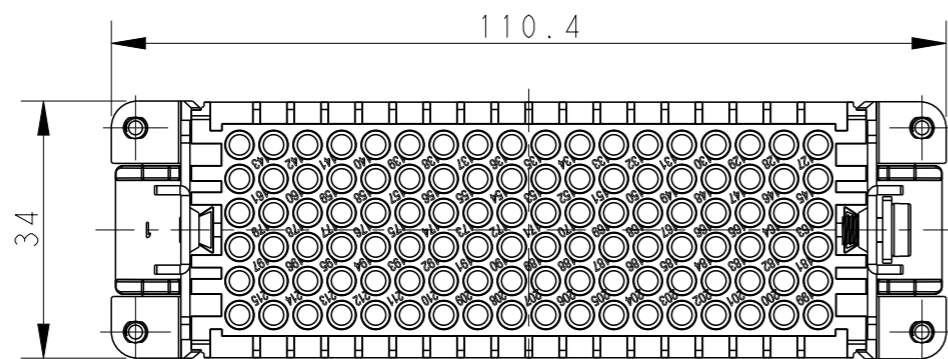


REVISIONS

P	LTR	DESCRIPTION	DATE	DWN	APVD
A		INITIAL RELEASE	23AUG2017	YC	CW
B		ECR-22-150866	27SEP2022	DL	CW



SCALE 1:2

M4 SCREW
RECOMMENDED TIGHTENING TORQUE 1.2N.m
M4螺丝, 推荐拧紧力矩1.2N.m

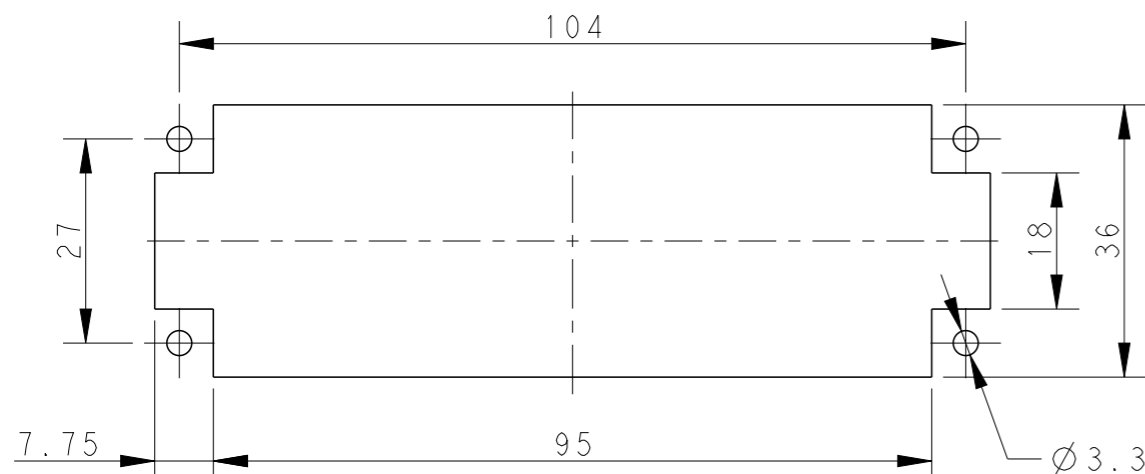
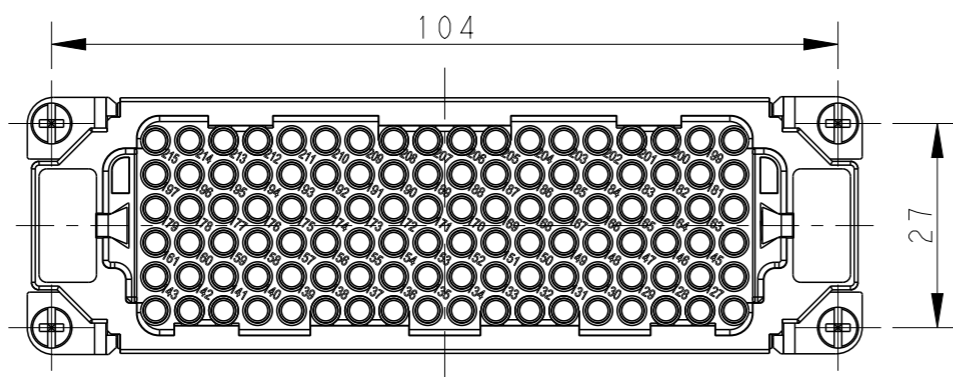
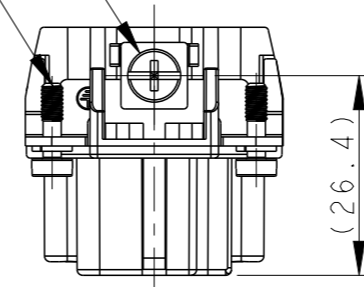
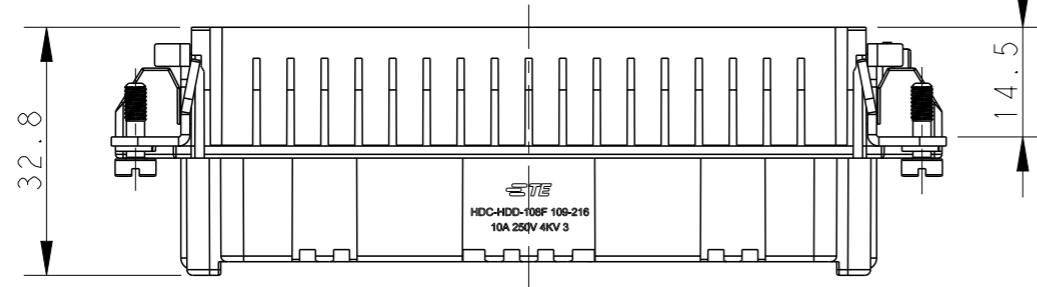
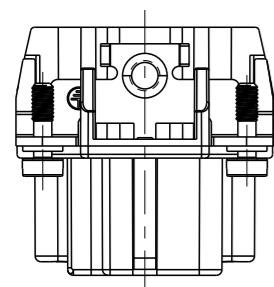
4X M3 SCREW
RECOMMENDED TIGHTENING TORQUE 0.5N.m
4X M3螺丝, 推荐拧紧力矩0.5N.m

NOTES:

- TECHNICAL CHARACTERISTICS:
INSULATION MATERIAL: PC
RATED VOLTAGE: 250 V
RATED CURRENT: 10 A
INSULATION RESISTANCE: $\geq 400M\Omega$
RATED IMPULSE VOLTAGE: 4 KV
POLLUTION DEGREE: 3
FLAMMABILITY: UL94V-0
MATING CYCLES: 500 CYCLES
WIRE RANGE: 0.14-2.5 mm² (26-14 AWG)
CONTACT TYPE: CRIMP CONTACT
- CONTACT NEED TO BE ORDERED SEPARATELY.
(ORDER No. REFER TO DRAWING: T20200X20XX000)

注释:

- 技术参数:
绝缘材料: PC
额定电压: 250V
额定电流: 10A
绝缘电阻: $\geq 400M\Omega$
额定脉冲电压: 4 KV
污染等级: 3
阻燃等级: UL94V-0
插拔次数: 500次
接线范围: 0.14-2.5 mm² (26-14 AWG)
接线类型: 冷压接
- 端子需要单独订购.
(订货号参考图面: T20200X20XX000)



PANEL CUT OUT FOR INSERTS FOR USING WITHOUT HOODS/HOUSINGS
不使用防护外壳时平面开孔尺寸

T2032162201-007	HDD-108-F 109-216	HDD-108 FEMALE INSERT 109-216 HDD-108 母插 109-216
PART NUMBER 料号	PART DESCRIPTION 产品描述	

THIS DRAWING IS A CONTROLLED DOCUMENT.	
DIMENSIONS: mm	TOLERANCES UNLESS OTHERWISE SPECIFIED:
	0 PLC ±-
	1 PLC ±-
	2 PLC ±-
	3 PLC ±-
	4 PLC ±-
	ANGLES ±-
MATERIAL	FINISH
-	-
-	-

DWN	23AUG2017
YORK CHEN	
CHK	23AUG2017
GINO YAO	
APVD	23AUG2017
CHRIS WANG	
PRODUCT SPEC	108-137043
APPLICATION SPEC	114-137043
WEIGHT	-
CUSTOMER DRAWING	

TE Connectivity		NAME		HDD-108-F 109-216	
		SIZE	CAGE CODE	DRAWING NO	RESTRICTED TO
A3	-	©-T2032162201007			
SCALE 1:1			SHEET 1 OF 1	REV B	