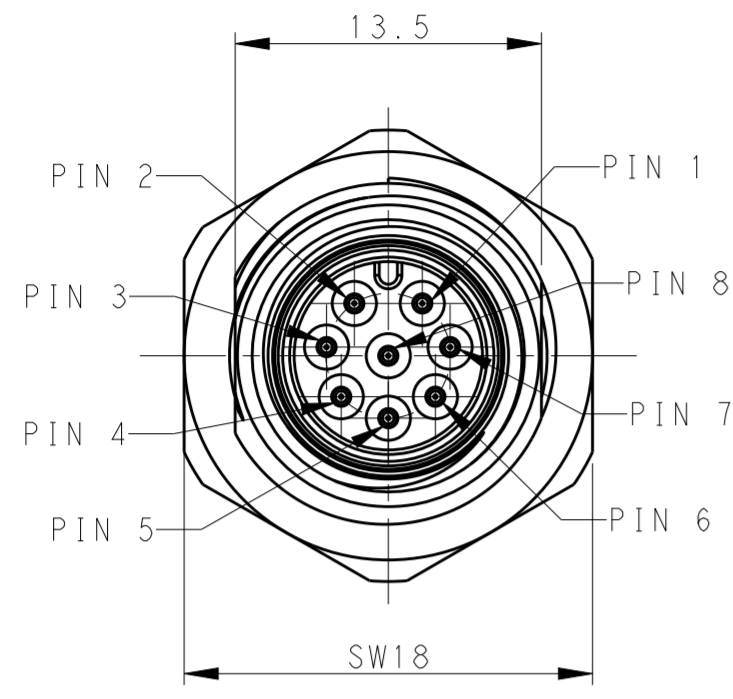
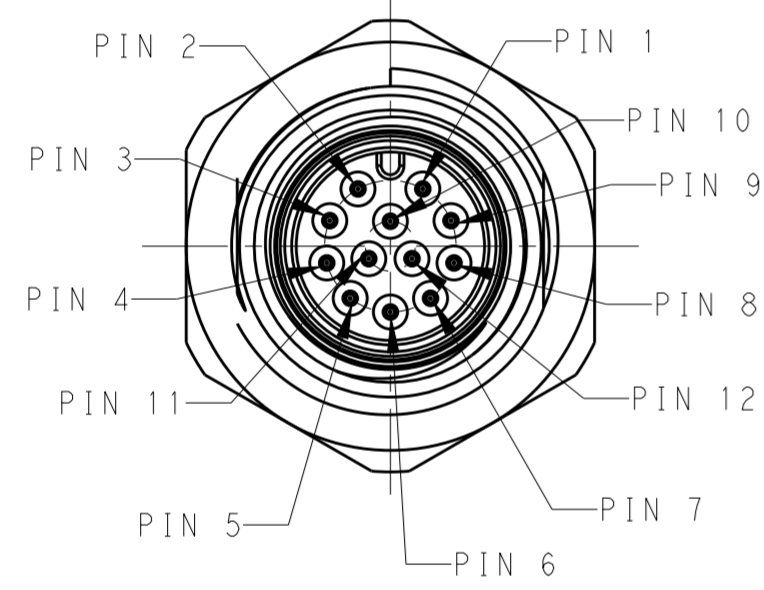


THIS DRAWING IS UNPUBLISHED. RELEASED FOR PUBLICATION 20
 © COPYRIGHT 20 BY - ALL RIGHTS RESERVED.

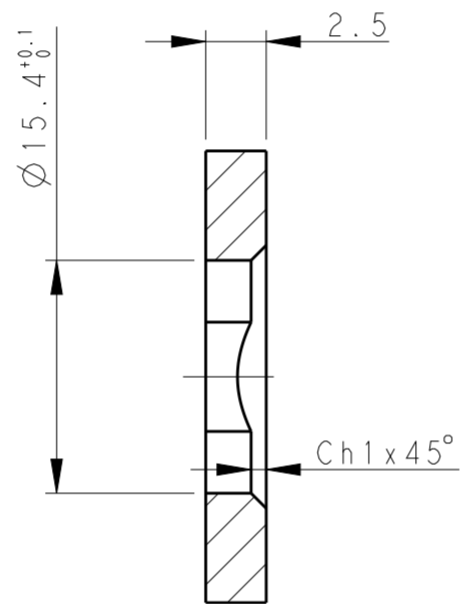
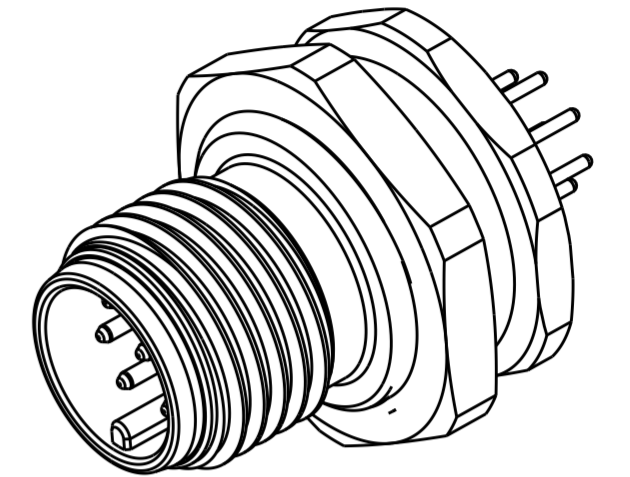
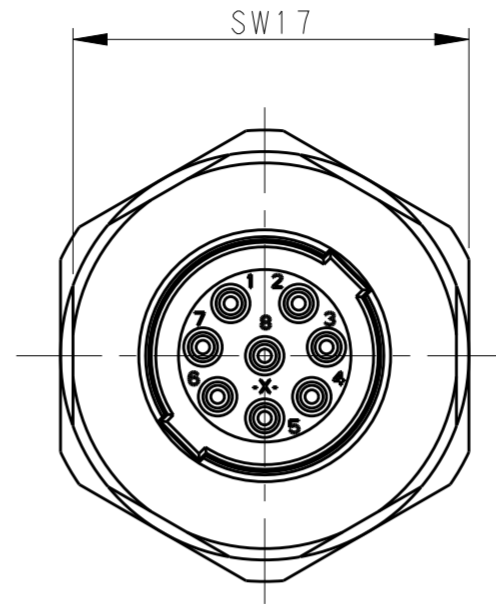
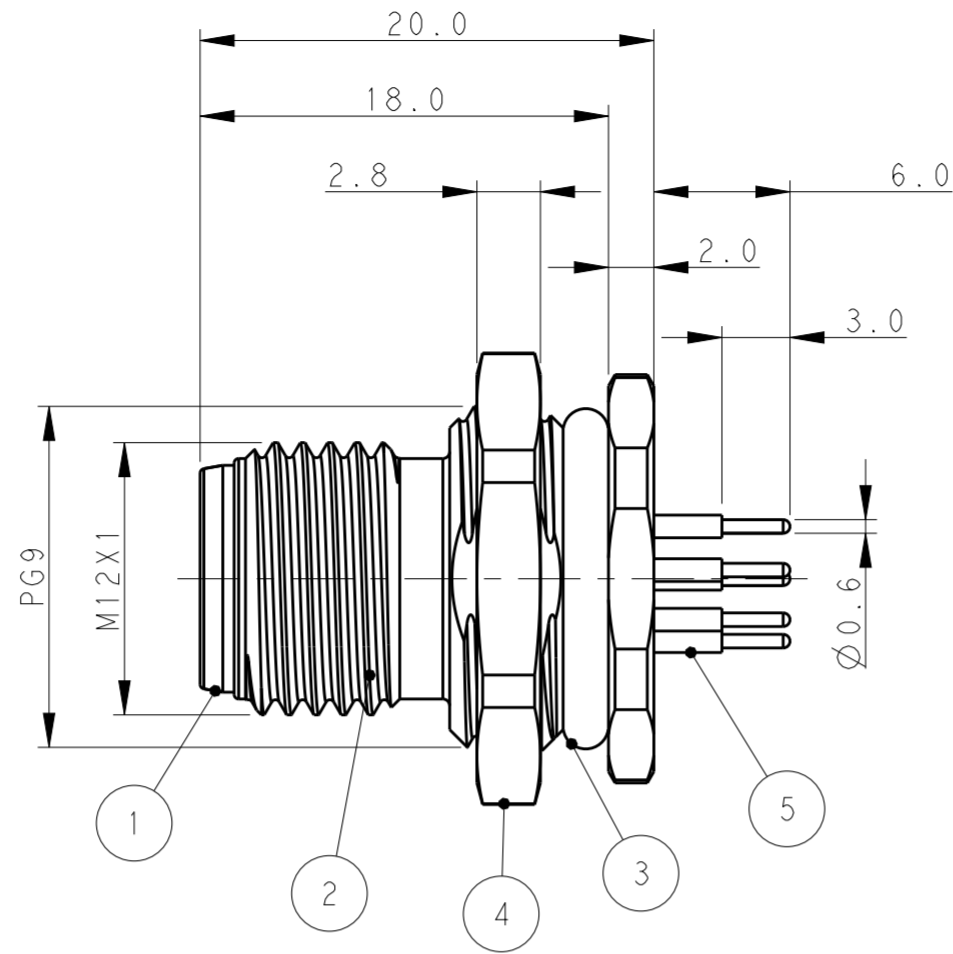
REVISIONS				
P	LTR	DESCRIPTION	DATE	APVD
A		INITIAL RELEASE	06JAN2018	G.W C.W
A1		ECR-18-003481	08MAR2018	G.W C.W
B		ECR-19-009136	20JUL2019	C.D C.W



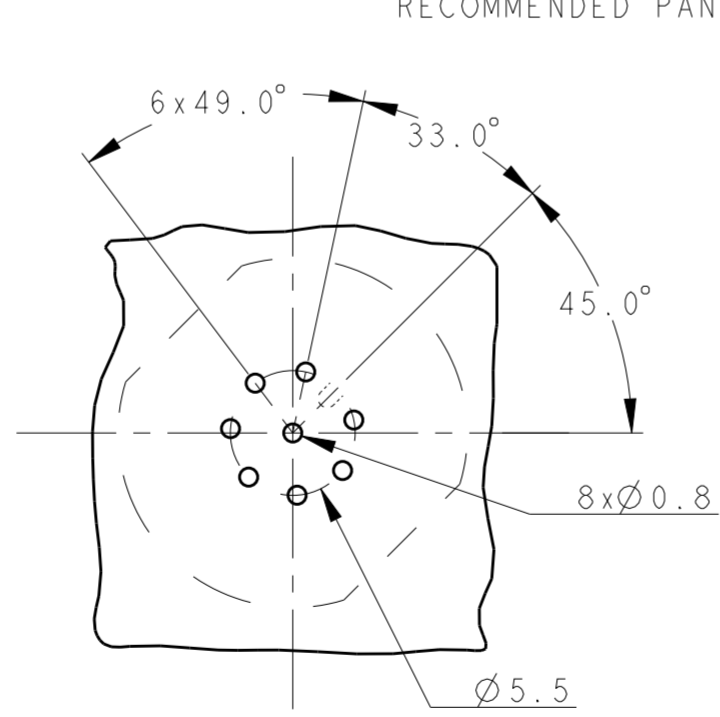
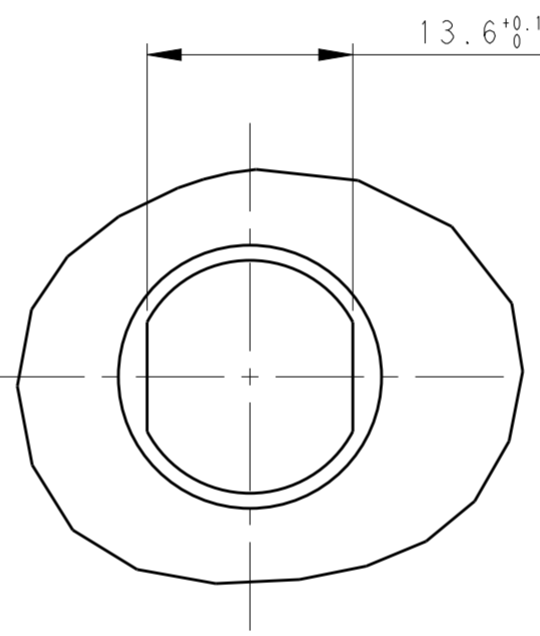
M12, MALE, 8POLES



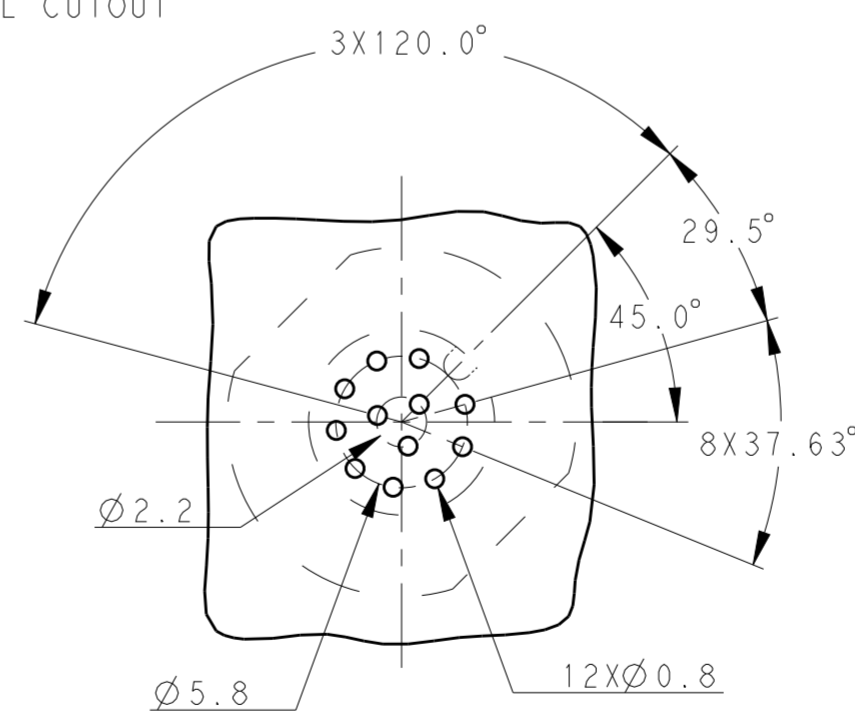
M12, MALE, 12POLES



RECOMMENDED PANEL CUTOUT



FOR 8POS.



FOR 12POS.

RECOMMENDED PCB LAYOUT

- NOTE:
1. TECHNICAL DATA: SEE TABLE 1
 2. RECOMMENDED PANEL CUTOUT AND PCB LAYOUT SEE DETAIL
 3. PACKAGING: 1 PIECE IN A BAG
 4. ALL DIMENSIONS ARE FOR NOMINAL REFERENCE ONLY UNLESS OTHERWISE STATED

- 注释:
1. 技术参数, 见表1
 2. 推荐面板及PCB开孔尺寸详见如图所示
 3. 包装: 1PCS/袋
 4. 所有尺寸仅供参考, 除非另有说明

TABLE 1

TECHNICAL DATA	T4140012081-000	T4140012121-000
RATED VOLTAGE	30V	30V
RATED CURRENT	2A	1.5A
POLLUTION DEGREE	3	3
OVERVOLTAGE CATEGORY	II	II
MATERIAL GROUP	II	II
DEGREE OF PROTECTION	IP67	IP67
OPERATION TEMPERATURE	-40~85°C	-40~85°C

PART NUMBER	TYPE	POS.
T4140012121-000	RPC-M12-MF-12CON-PG9-LBU	12
T4140012081-000	RPC-M12-MF-8CON-PG9-LBU	8

MATERIAL	DESCRIPTION	ITEM
GOLD PLATED	COPPER ALLOY CONTACT	5
NICKEL PLATED	COPPER ALLOY METAL NUT	4
BLACK	RUBBER O-RING	3
NICKEL PLATED	COPPER ALLOY M12, MALE, METAL BODY	2
-	PA66 M12, MALE HSG	1

THIS DRAWING IS A CONTROLLED DOCUMENT.

DWN: 06JAN2018 Gavin Wang
 CHK: 06JAN2018 Kevin Huang
 APVD: 06JAN2018 Chris Wang

TE Connectivity

M12 PANEL MOUNT CONNECTOR
 A CODE, MALE, REAR MOUNT
 PCB SOLDERING

108-106140
 114-137144

SIZE: A2
 SCALE: 3:1
 SHEET: 1 OF 1
 REV: B