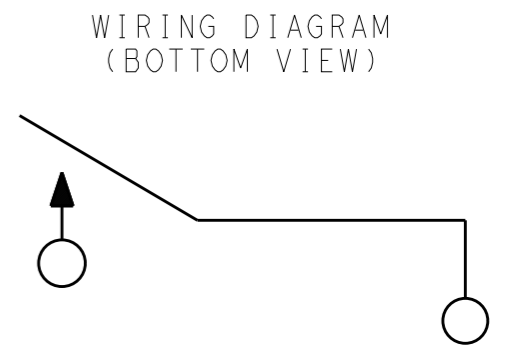
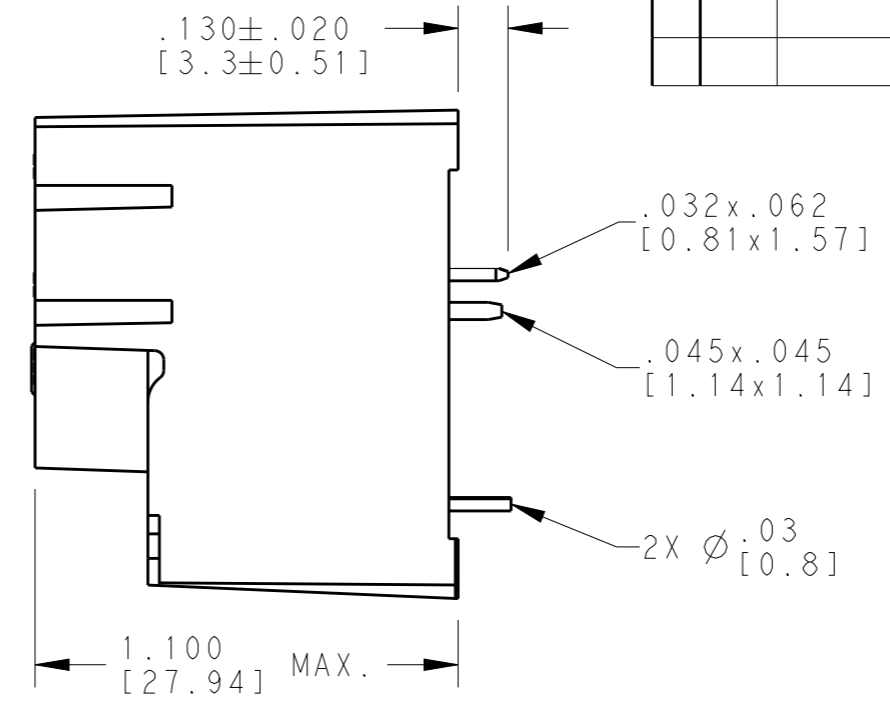
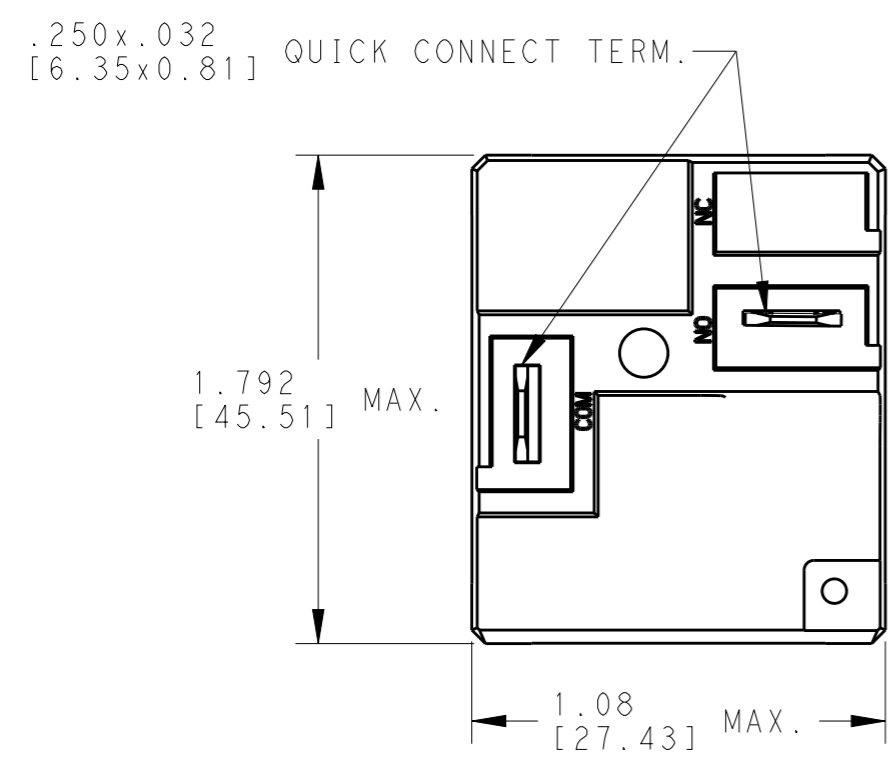
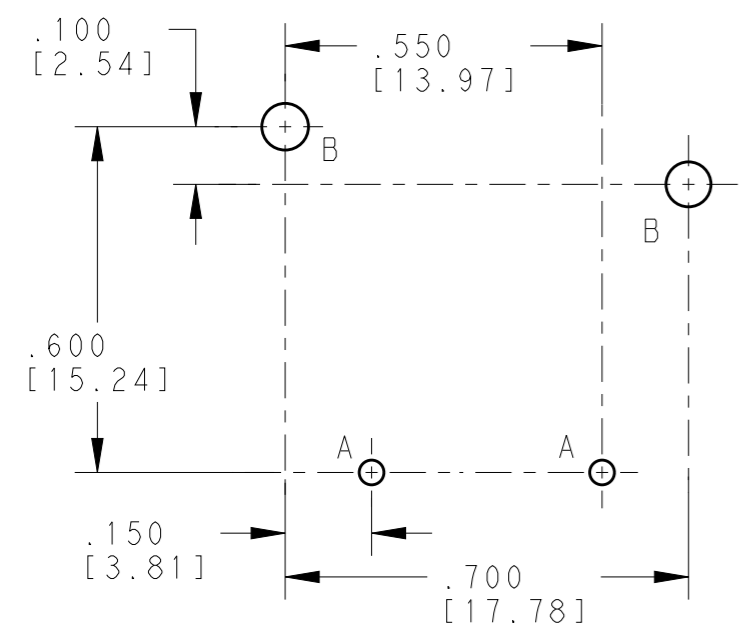


THIS DRAWING IS UNPUBLISHED. RELEASED FOR PUBLICATION 20
 © COPYRIGHT 20 BY - ALL RIGHTS RESERVED.

| LOC | DIST | REVISIONS | | | |
|-----|------|-------------|-------------------------------|-----------|-----------|
| P | LTR | DESCRIPTION | DATE | DWN | APVD |
| HB | 00 | F | ECR-10-018145 | 03NOV2010 | SPN GK |
| | | G | CHANGE TE LOGO, ECO-12-005755 | 24AUG2012 | HL.C BH.Y |



HOLE CHART
 A- Ø .043±.003 [1.09±0.08]
 B- Ø .081 [2.06]

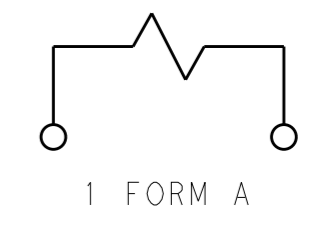


ELECTRICAL CHARACTERISTICS

NOMINAL VOLTAGE: 12VDC
 OPERATE VOLTAGE: 9VDC
 DROPOUT VOLTAGE: 1.2VDC MIN.
 COIL RESISTANCE: 144 OHMS ±10%
 CONTACT ARRANGEMENT: 1 FORM A (SPST)
 CONTACT MATERIAL: SILVER CADMIUM OXIDE
 CONTACT RATING: 30A @ 240 VAC, NO CONTACT


BREAKDOWN: 1554V RMS 60Hz ACROSS OPEN CONTACTS
 2500V RMS 60Hz BETWEEN CONTACTS AND COIL
 6KV SURGE USING 1.2 MICROSEC. / 50 MICROSEC. IMPULSE WAVE OR
 .5 MICROSEC. -100KHz RING WAVE BETWEEN CONTACTS AND COIL.

STORAGE TEMPERATURE RANGE: -55°C TO +130°C
 OPERATE TEMPERATURE RANGE: -55°C TO +105°C**



TE PART NO.
 1-1419104-7

PC BOARD LAYOUT (BOTTOM VIEW)

| | | | | |
|--|--|--------------------------------|---|--|
| THIS DRAWING IS A CONTROLLED DOCUMENT. | | DWN J. SLIKE 09FEB2010 |  TE Connectivity | |
| DIMENSIONS: INCH [mm] | | CHK G. KOPPENHEFFER 09FEB2010 | | |
| TOLERANCES UNLESS OTHERWISE SPECIFIED: | | APVD G. KOPPENHEFFER 09FEB2010 | NAME RELAY, PC, SEALED | |
| 0 PLC ±- | | PRODUCT SPEC - | SIZE | |
| 1 PLC ±- | | APPLICATION SPEC - | CAGE CODE | |
| 2 PLC ±.01[0.25] | | WEIGHT - | DRAWING NO | |
| 3 PLC ±.005[0.13] | | Customer Drawing | A300779 | |
| 4 PLC ±- | | SCALE 2:1 | G-T9AS1D22-12 | |
| ANGLES ±- | | SHEET 1 OF 1 | RESTRICTED TO - | |
| MATERIAL - | | REV G | | |
| FINISH - | | | | |