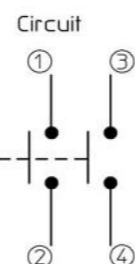
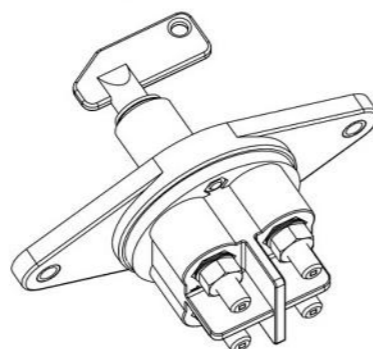
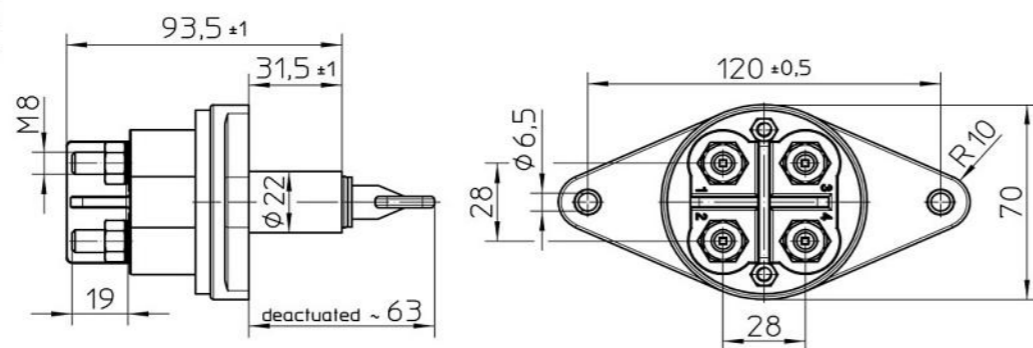


REVISIONS

P	LTR	DESCRIPTION	DATE	DWN	APVD
	A	TE STANDARD UPDATED	04JUN2024	KS	RB

EC No. Page 1 of 1

Battery Disconnecter 2x250A



Technical Data:

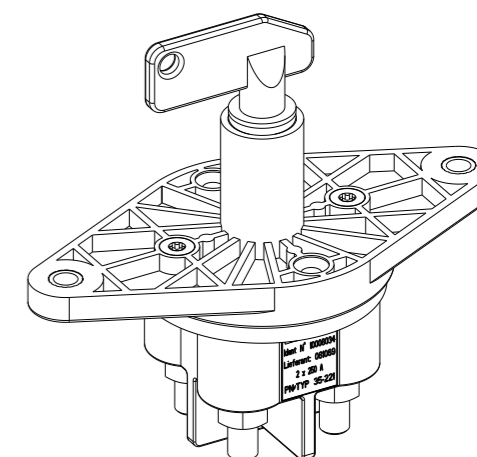
Case Material	PA GF black
Switch Lever Material	PA GF red
Min. Insulation Resistance	100MΩ
Dielectric Withstanding Voltage	1050V-1min.
Max. Contact Drop during Resistive Load	150mV
Voltage	to 32VDC
Duty Rating	2x250A
Overload	2x500A-180sec. 2x1000A-30sec.
Sealing	IP 67/ IEC 529
Vibration	10G/ 5-200Hz/4G, 200-2000Hz
Shock G-Level	50G/ 11ms
Duty Shock-6000Zyklen	40G/ 6ms
Weight	ca.300g/ 0.64 Pound
Temperature Range	-40°C to +85°C
Wire Section (At Nominal Load)	min. 70mm ²
Mounting position	optional
Switch lever	removeable
Max. Torque (Main Contacts)	12-13Nm
Switch lever Spare Part No.	35.200.014

Date	Name	mm	Scale	Drawing No.
25.09.2008	Seeger	→	1:2	35-221
25.09.2008	Grind	General Tolerances		NSN: Liebherr-Idf.No.: 10008034

NOTE

Bemerkungen:

- 1 TE-CONNECTIVITY ORDER-NUMBER
TE-Connectivity Bestellnummer
- 2 DO NOT SWITCH UNDER LOAD!
Nicht unter Last schalten!



1	K1060607	A	BATTERY DISCONNECTOR 2x250A Batterietrennschalter 2x250A	1
TE ORDER-NO.	REV.	DESCRIPTION	ITEM NO.	

THIS DRAWING IS A CONTROLLED DOCUMENT.

DIMENSIONS:	TOLERANCES UNLESS OTHERWISE SPECIFIED:
mm	DIN ISO 2768 cL
	0 PLC ±
	1 PLC ±
	2 PLC ±
	3 PLC ±
	4 PLC ±
	ANGLES ±
MATERIAL	FINISH

DWN	25SEP2008
CHK	25SEP2008
APVD	25SEP2008
PRODUCT SPEC	
APPLICATION SPEC	
WEIGHT	
CUSTOMER DRAWING	



NAME			
BATTERY DISCONNECTOR 2x250A Batterietrennschalter 2x250A			
SIZE	CAGE CODE	DRAWING NO.	RESTRICTED TO
A3	00779	35-221	-
SCALE	SHEET	OF	REV
	1	1	A