



SAFETY AND ENTERTAINMENT *ON THE GO*

CONNECTING THE CONNECTED VEHICLE

Demand for convenience and safety are driving vehicle designs for infotainment and navigation connectivity. Both convenience and safety share the need for large amounts of data to be transferred and processed at a high speed in the vehicle. TE's products for the

next generation of connected vehicles provide fast, reliable, and responsive connectivity solutions. Our technologies are focused on high-quality consumer port applications, board-to-board connections, wireless, and vehicle-to-vehicle communication.

DISCOVER MORE
te.com

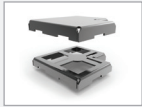


SIGNAL & GROUNDING

Limit interference with customizable shields and contacts for complex devices.



Spring Fingers
Tiny, scalable, surface mountable contacts allow designers to fit grounding solutions almost anywhere.



5G Board Level Shielding (BLS)
EMI shields that minimize crosstalk in tightly designed systems.



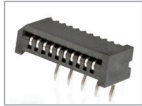
5G RF Connectors
A wide array of RF and standard coax connectors for any size drone.



Switching Coax
High force contacts increase connection reliability in a range of low-profile products.

PCB CONNECTORS

Reliable interconnects designed for the demanding, high quality consumer market vehicle infotainment modules.



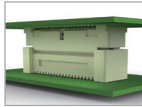
Flexible Printed Circuit (FPC) Space-saving, angled insertion connectors that can be placed in a wide range of PCB locations.



Fine Pitch BTB Connectors
0.4 mm pitch for today's smaller, thinner applications.



Flat Flexible Cable (FFC)
Crimp style flex connection for FFC, FEC and FPC cable with many housing options and leading application tooling.



Free Height Connectors
These versatile connectors are useful for downsizing applications that require parallel stacked circuit boards.



SIM and SD Card Connectors
Large array of options including block, tray, and combo connectors.



AMP CT & Mini CT Connectors
With broad industry usage these feature both crimp and IDC style interconnects with many header options.



Board-to-Flex Connectors
Full shielding provides EMI protection for high-speed data transmission.



LCEDI Connectors
TE's LCEDI connectors are designed to provide exceptional performance in both LVDS and eDP applications.

POWER CONNECTORS

TE keeps your power flowing with a broad selection of internal and external power connectors.



5G ELCON Mini Power Connectors
Low profile solutions with up to 40A per contact and positive latch retention for cable-to-PCB applications.



5G ELCON Micro Power Connector
Provides high current density at 12.5A per pin in the common industry footprint of 3.0mm.

MULTIMEDIA I/O

Product satisfaction depends on reliable I/O connectivity.



Audio Visual (AV) Jack
Reliable circular I/O connectors available in SMD or compressive mounting styles.



5G USB/USB Type-C Connectors
Universal and user-friendly, TE offers micro USB, USB 3.0, and the new high-power and reversible USB Type-C.



5G HDMI Connectors
Digital audio and video in one popular format available with full shielding for ESD protection.



CHAMP Docking Connectors
Digital audio and video in one popular format available with full shielding for ESD protection.

ANTENNAS

High quality signal clarity and operation on most networks in regional or international markets.



5G Embedded Antennas
A range of products supporting low profile wireless connectivity for 4G and 5 GHz Wi-Fi applications.



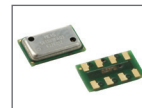
5G Custom Antennas
TE provides custom solutions addressing the increased complexity and demand for miniaturization.

SENSORS

TE sensors provide the data that helps increase safety, comfort, and efficiency.



Temperature Sensors
Accurate temperature monitoring for comfort and energy efficiency.



Pressure Sensors
An industry leader for a range of both standard and custom pressure sensors.

