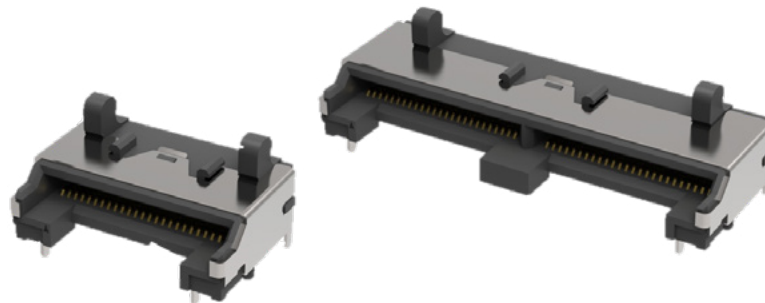


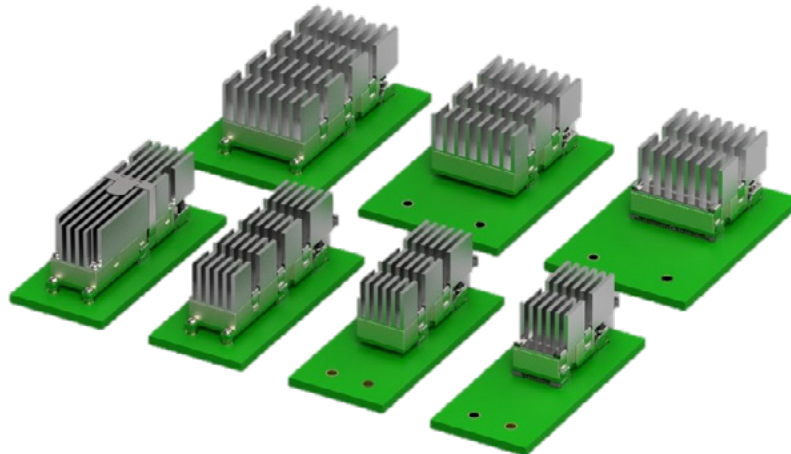
TE CONNECTIVITY'S (TE) HIGH SPEED CONNECTORS FOR COBO APPLICATIONS

Enabling Consortium of Onboard Optics (COBO) Connectivity



50 position, x8
[2316451-1](#)

100 position, x16
[2317956-1](#)



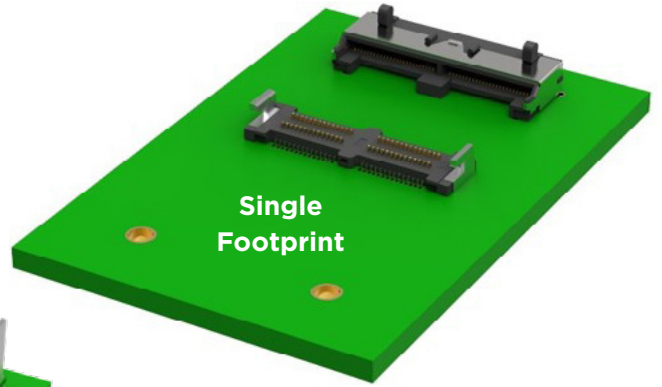
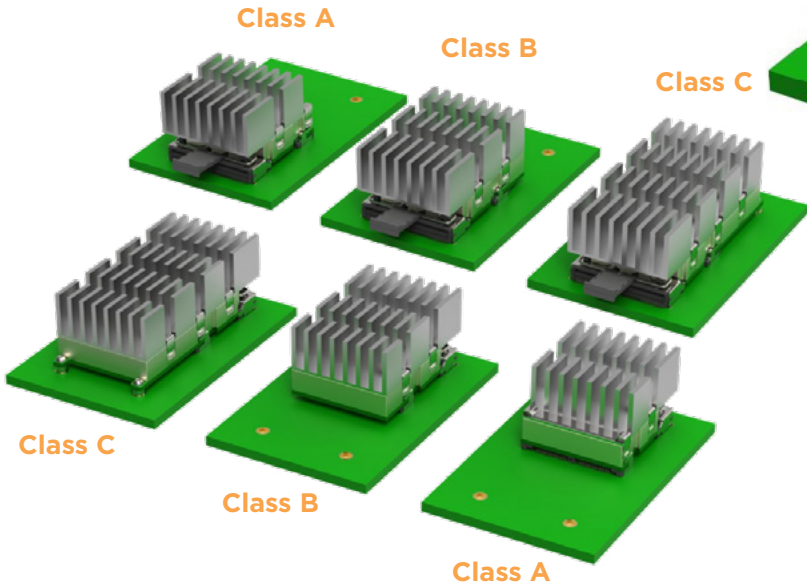
COBO form factor enables at least 32 of the 400G modules in 1RU equipment with full height heat sink and distributed thermal load.

WHAT IS COBO?

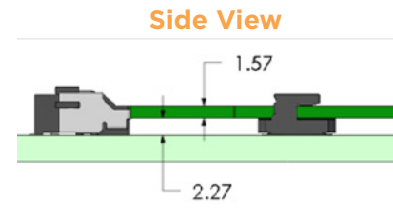
- Consortium that is defining a standard for onboard optical solutions to be a common platform for coherent, long reach and short reach modules
- Defined both eight lane (x8) and sixteen lane (x16) modules
- x8 and x16 footprints each accommodate COBO Class A, B, & C form factors

Single Footprint Enabling Multiple Power Classes for Short Reach / Long-Reach and Coherent Applications

Heat sink with clip attachment



Single Footprint For All Classes

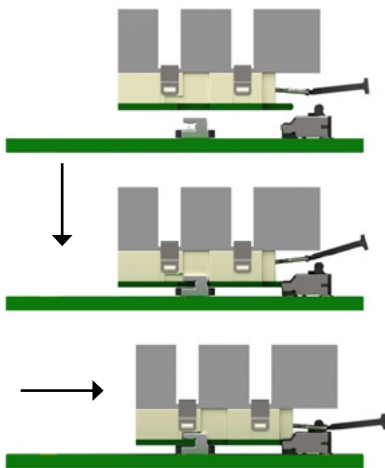


Dimensions in mm

Graphic showcases the x16 applications. x8's applications also available.

Mechanical Details:

Easy and secure module insertion and withdrawal



COBO HCB/MCB SDD21 (Insertion Loss), PSFEXT (Power Sum Far End Cross Talk)

