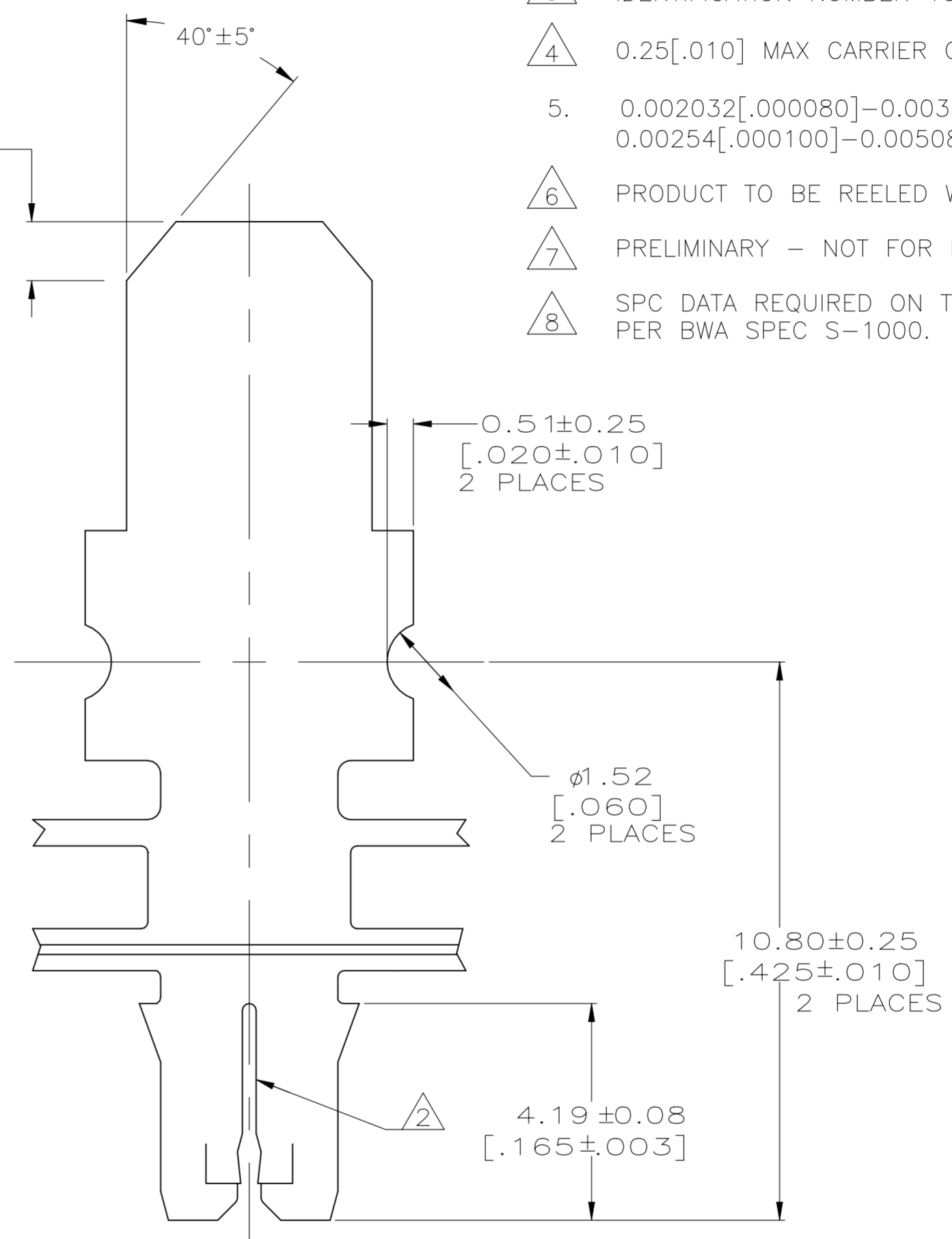
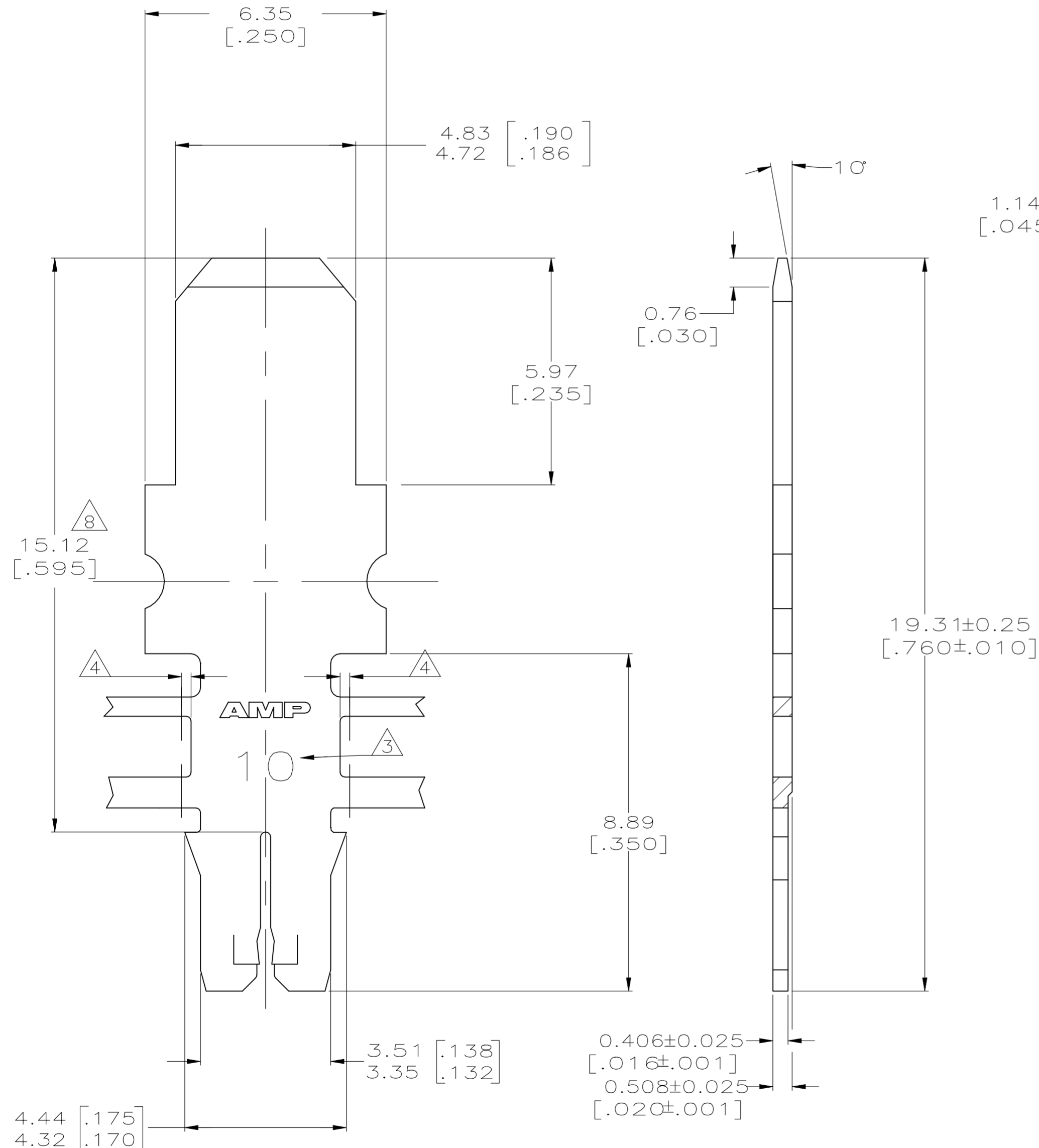


THIS DRAWING IS UNPUBLISHED. RELEASED FOR PUBLICATION  
 © COPYRIGHT - TE Connectivity ALL RIGHTS RESERVED.

REVISIONS					
P	LTR	DESCRIPTION	DATE	DWN	APVD
	M	REVISED PER ECN-23-219184	27JUN2023	PS	EMS



- 1 CONTINUOUS STRIP ON REELS WITH TERMINALS LOCATED ON 6.86±0.08[.270±.003] CENTERS
- 2 SLOT ACCEPTS 0.36-0.51mm [#27-#24] AWG COPPER MAGNET WIRE. TWO WIRES OF THE SAME SIZE MAX PER SLOT
- 3 IDENTIFICATION NUMBER 10 FOR THE MAGNET WIRE SLOT SIZE
- 4 0.25[.010] MAX CARRIER CUT-OFF TABS
- 5. 0.002032[.000080]-0.003870[.000150] TIN PLATE OVER 0.00254[.000100]-0.00508[.000200] COPPER UNDERPLATE
- 6 PRODUCT TO BE REELED WITH SPECIAL PAPER TRAILER
- 7 PRELIMINARY - NOT FOR PRODUCTION
- 8 SPC DATA REQUIRED ON THIS DIMENSION PER BWA SPEC S-1000.

REVERSE	1217497-4
STANDARD	1217497-3
REVERSE	1217497-2
STANDARD	1217497-1
REELING	PART NUMBER

THIS DRAWING IS A CONTROLLED DOCUMENT.		DWN MICHAEL S. FEHER 27SEP2000		
DIMENSIONS: mm		CHK KURT A. RANDOLPH 27SEP2000		
TOLERANCES UNLESS OTHERWISE SPECIFIED:		APVD KURT A. RANDOLPH 27SEP2000	NAME TAB, 4.75[.187] SERIES, MAG-MATE Slim Line	
0 PLC ± -	1 PLC ± -	PRODUCT SPEC 108-1484	SIZE A2	CAGE CODE 00779
2 PLC ± 0.13[.005]	3 PLC ± -	APPLICATION SPEC 114-2140	DRAWING NO C=1217497	RESTRICTED TO -
4 PLC ± -	ANGLES ± -	WEIGHT 0	SCALE 10:1	SHEET 1 of 1
MATERIAL BRASS	FINISH -5	CUSTOMER DRAWING	REV M	