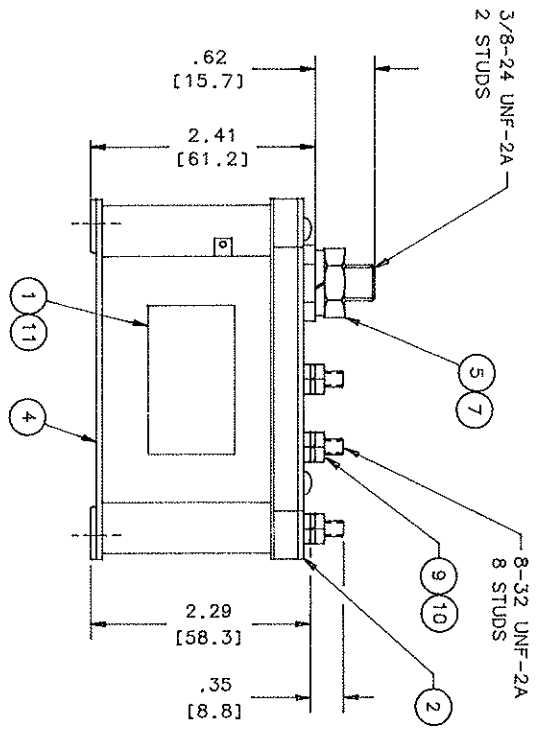
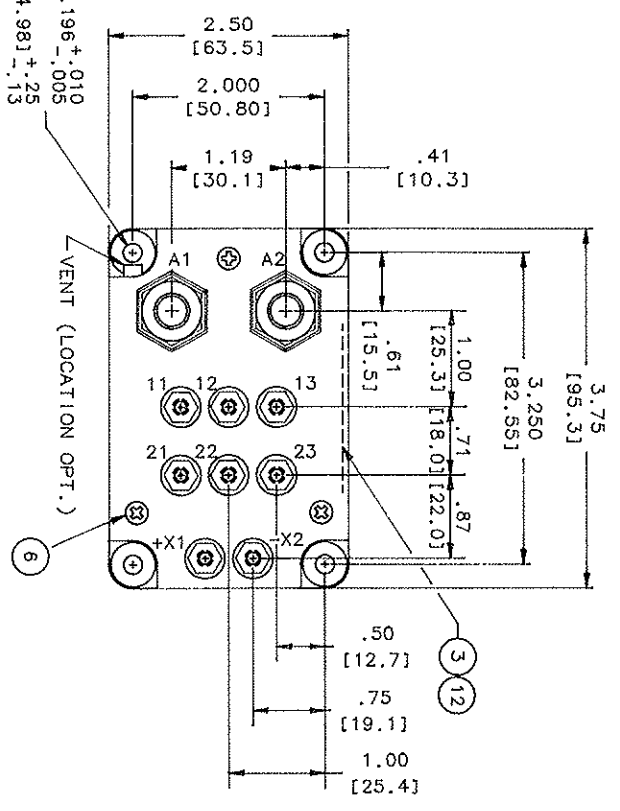


REVISIONS		RELEASED	DATE	APPROVED
REV. ECH. No.	DESCRIPTION			
A	A1 AND A2 TERMINALS RE-IDENTIFIED		96/01/26	RS
B	32516 FIND NOS 11 & 12 ADDED		97/03/10	RS



NOTES:
 1. THIS UNIT MEETS THE MATERIAL AND WORKMANSHIP REQUIREMENTS OF MIL-R-6106J.
 2. DIMENSIONS IN BRACKETS ARE IN MILLIMETERS.

CONSTRUCTION
 MAIN CONTACTS
 VOLTAGE
 CURRENT
 NOMINAL INRUSH CARRY

GASKET SEALED (VENTED)
 SPST N.O.
 28 VDC
 400 AMP
 1200 AMP
 800 AMP FOR 30 SEC.

AUXILIARY CONTACTS
 CONFIGURATION
 VOLTAGE
 CURRENT RES

2PDT
 28 VDC
 5 AMP

COIL DATA
 DUTY CYCLE
 MAX OPERATE VOLTAGE
 NOM OPERATE VOLTAGE
 MAX PICKUP VOLTAGE
 DROPOUT VOLTAGE
 COIL RESISTANCE @ 25°C

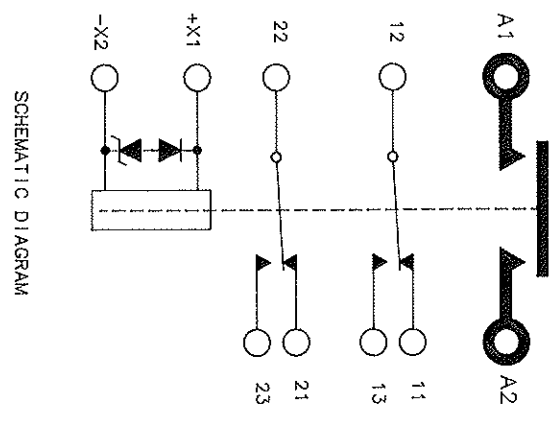
CONTINUOUS
 30 VDC
 28 VDC
 18 VDC
 1 - 7 VDC
 60 OHM ± 10%

TRANSIENT SUPPRESSION
 OPERATE TIME

45 V MAX
 35 MS MAX

ENVIRONMENTAL DATA
 AMBIENT TEMP.
 ALTITUDE
 LIFE ELECTRICAL
 LIFE MECHANICAL
 WEIGHT (MAX)

-55°C TO 71°C
 50,000 FEET MAX
 50,000 CYCLES MIN.
 100,000 CYCLES MIN.
 1.35 LBS. (.613 kg)



FIND NO.	QTY	PART OR IDENTIFYING NO.	NOMENCLATURE OR DESCRIPTION	FMSA NO.	DRAWING OR SPECIFICATION	MATERIAL OR NOTE
12	1	39529-051	OVERLAY			
11	1	39529-001	OVERLAY			
10	8	50408-034	NUT 8-32 X 5/16 X 3/32 HEX.			BRASS
9	8	51808-064	WASHER-LOCK NO. 8 .307 X .047			BRONZE
7	2	51807-084	WASHER-LOCK NO. 3/8 SPLIT TYP.			BRONZE
6	3	51200-020	SCREW NO. 4 X 1/4 PAN HD.			ST. STEEL
5	2	50407-164	NUT 3/8-24 X 5/8 X 7/32 HEX			BRASS
4	1	44087-010	CONTACTOR ASSEMBLY-PRI.			
3	1	44090-001	PLATE-WIRING DIAGRAM			
2	1	44088-001	PLATE-BASE COVER			
1	1	16043-001	PLATE-NAME			

UNLESS OTHERWISE SPECIFIED	REF. MHI LTD.	HARTMAN ELECTRICAL MANUFACTURING
TOLERANCES IN INCHES		MANFIELD, OHIO
1 PL. DEC. 12 PL. DEC. ANGLES		
*1.5	*.25	*1°
UNLESS OTHERWISE SPECIFIED	DR. BY	RLS
TOLERANCES IN MM	CHK BY	RS
	ENG. BY	DM
	MFG. BY	DM
	RELEASE	DM
	CONTR. NO.	
	GOVT. APPROV.	
SIZE	CODE IDENT	DWG. NO.
A	74063	A-400B
SCALE 1:2		
		SHEET