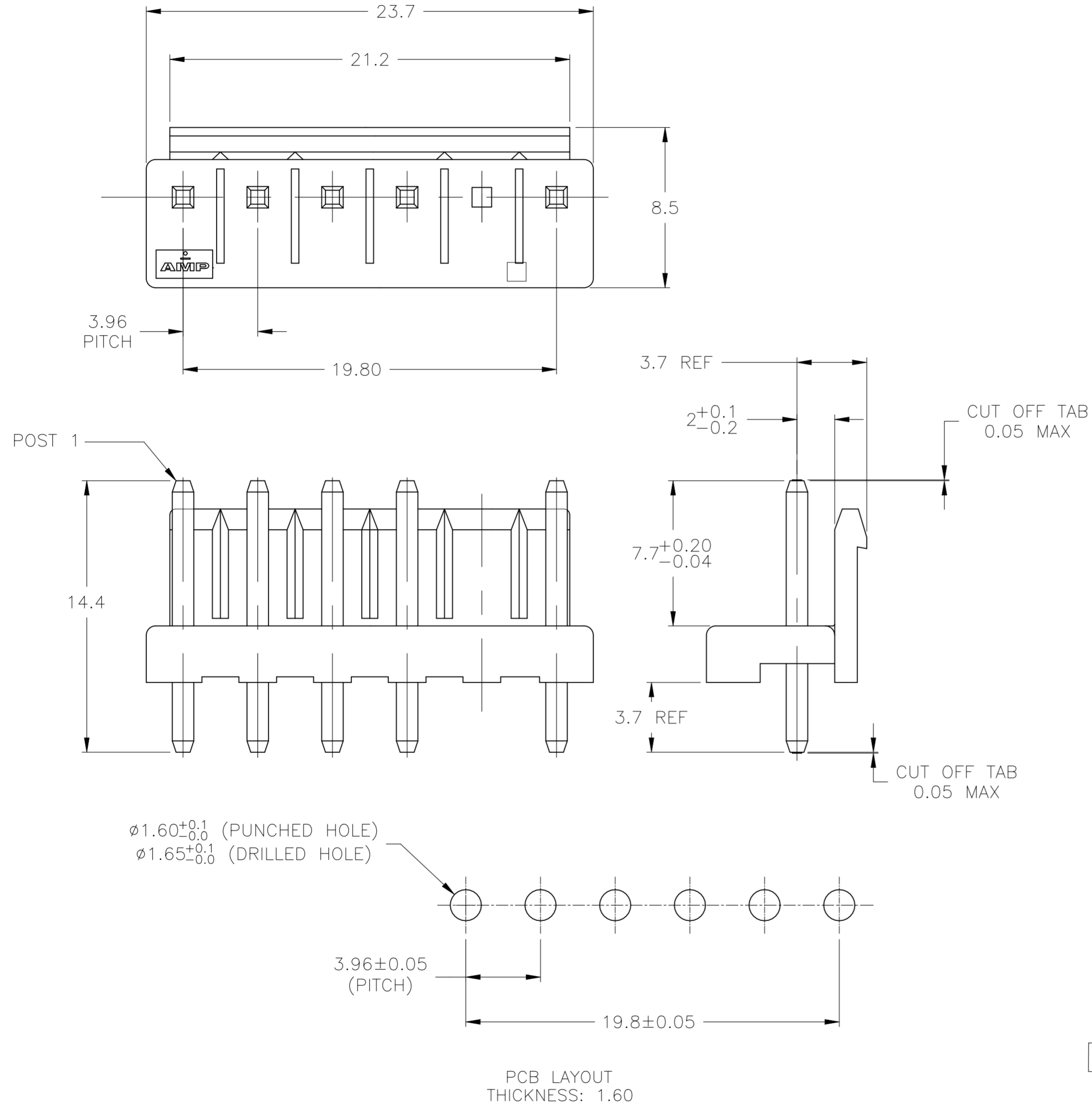


REVISIONS					
P	LTR	DESCRIPTION	DATE	DWN	APVD
C4		REVISED PER ECR-23-180026	17JUL2023	NH	LC

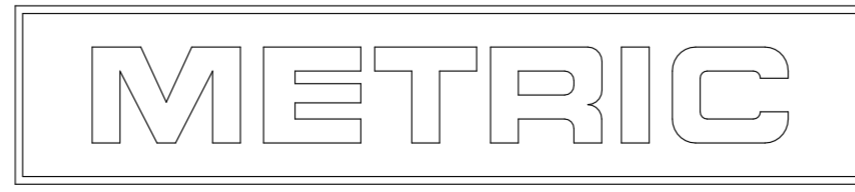


- 1 MATERIAL: HOUSING- PBT, NATURAL
POST- BRASS, 1MICROMETER MIN TIN OVER
0.8 MICROMETER MIN NICKEL.
- 2. RECOMMENDED MATING PART: *-1123722-*
- 3 O : WITH PIN,
X : WITHOUT PIN.
- 4 PRELIMINARY PART - NOT RELEASED FOR PRODUCTION

0	0	0	0	0	0	COLOR	NO. OF POSITIONS	ASSEMBLY PART NO.
0	0	0	0	0	0	GREEN	6	6-1744106-7
0	0	X	0	X	0	BLACK	6	5-1744106-2
0	0	0	0	0	0	RED	6	4-1744106-7
0	X	0	0	0	0	RED	6	4-1744106-4
0	0	X	0	X	0	RED	6	4-1744106-2
0	0	0	0	0	0	BLUE	6	3-1744106-7
0	0	X	0	X	0	BLUE	6	3-1744106-2
0	0	0	0	0	0	YELLOW	6	2-1744106-7
0	0	X	0	X	0	YELLOW	6	2-1744106-2
0	0	X	0	X	0	NATURAL	6	1-1744106-2
X	0	X	0	X	0	NATURAL	6	1-1744106-1
0	0	0	0	X	0	BLACK	6	5-1744106-8
0	0	0	0	0	0	BLACK	6	5-1744106-7
0	0	0	0	0	0	NATURAL	6	1-1744106-7
0	X	0	X	0	0	NATURAL	6	1744106-6
0	0	X	0	0	0	NATURAL	6	1744106-5
0	X	0	0	0	0	NATURAL	6	1744106-4
0	X	0	0	X	0	NATURAL	6	1744106-3
0	0	0	X	0	0	NATURAL	6	1744106-2
0	0	0	0	X	0	NATURAL	6	1744106-1
1	2	3	4	5	6	COLOR	NO. OF POSITIONS	ASSEMBLY PART NO.

OBSOLETE

1744106-1 SHOWN



THIS DRAWING IS A CONTROLLED DOCUMENT.

DIMENSIONS: mm	TOLERANCES UNLESS OTHERWISE SPECIFIED:	DWN K. WHITAKER 04JUN04	TE Connectivity NAME HEADER ASSEMBLY, SPECIAL, OMITTED POST, 6 POSITION, ECONOMY POWER (EP)
	0 PLC ± -	CHK D. BOSSI 04JUN04	
	1 PLC ± 0.5	APVD D. BOSSI 04JUN04	
	2 PLC ± 0.30	PRODUCT SPEC 108-5609	
	3 PLC ± -	APPLICATION SPEC	SIZE A2
	4 PLC ± -		CAGE CODE 00779
	ANGLES ± -		DRAWING NO C=1744106
MATERIAL 1	FINISH 1	WEIGHT 0.000000	RESTRICTED TO -
		CUSTOMER DRAWING	SCALE N/A SHEET 1 OF 1 REV C4