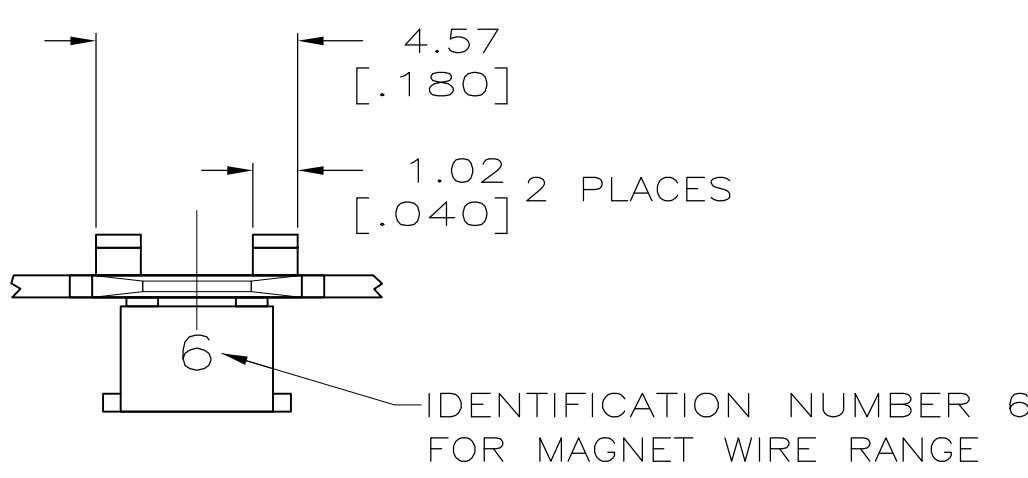
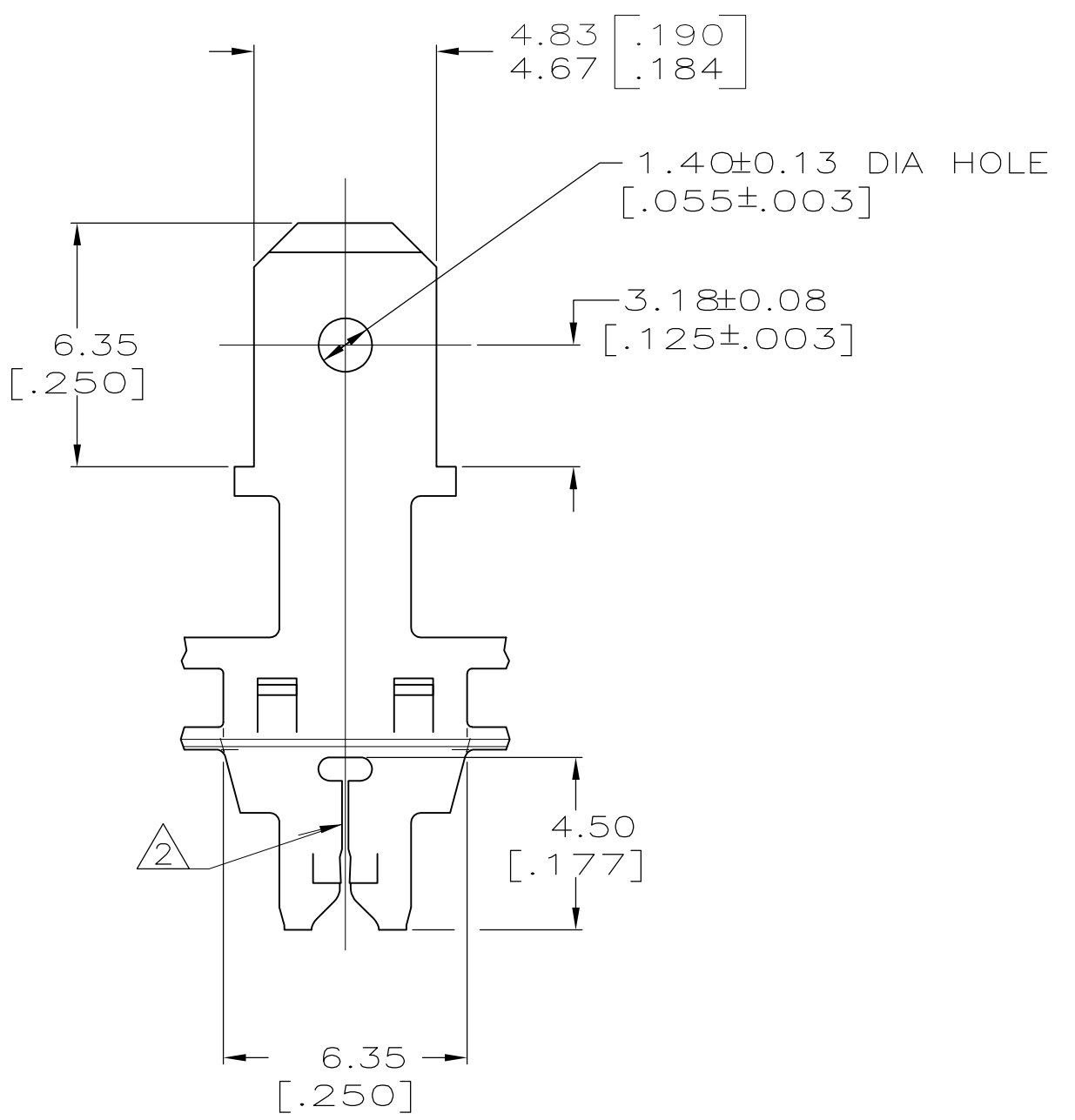
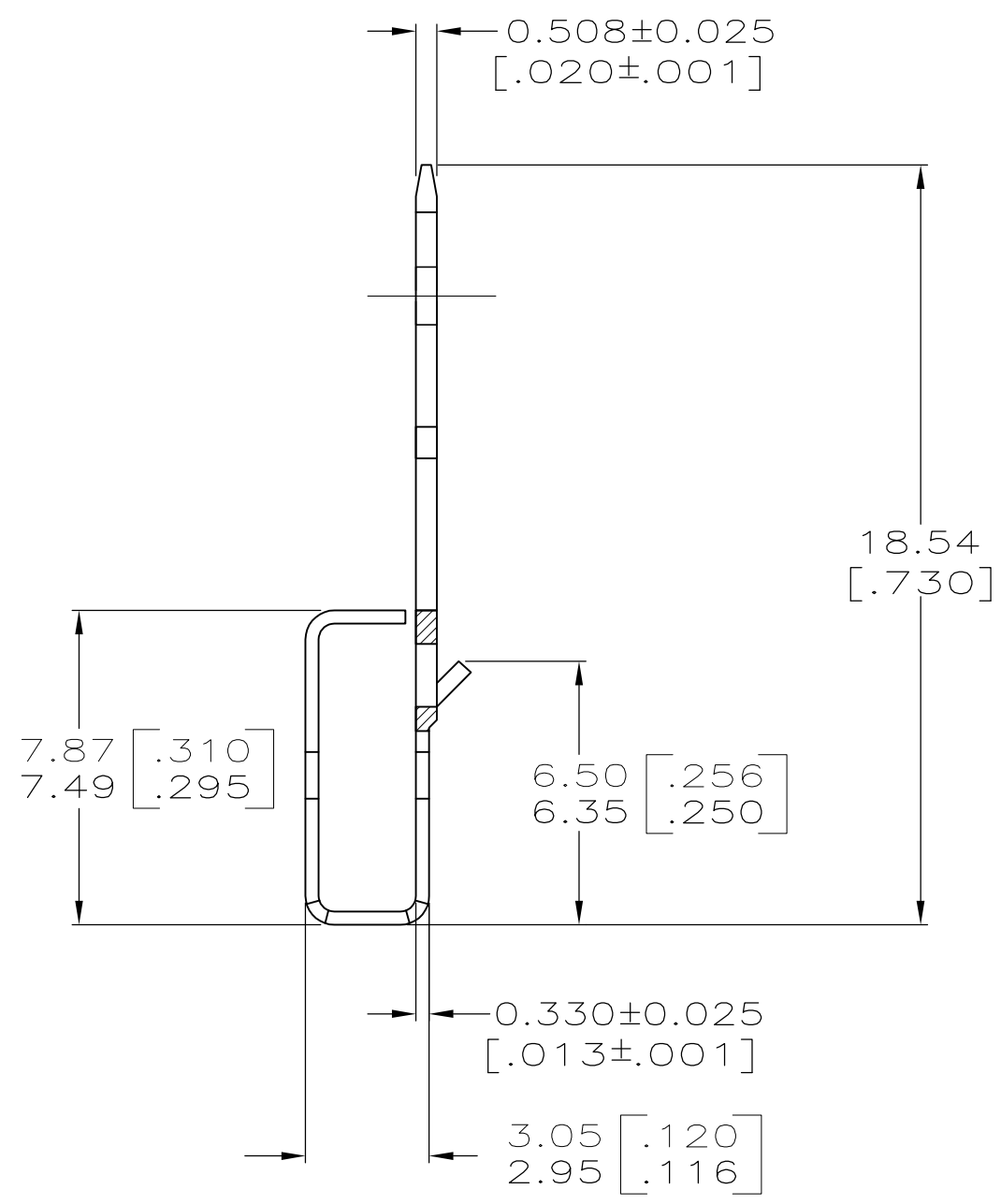
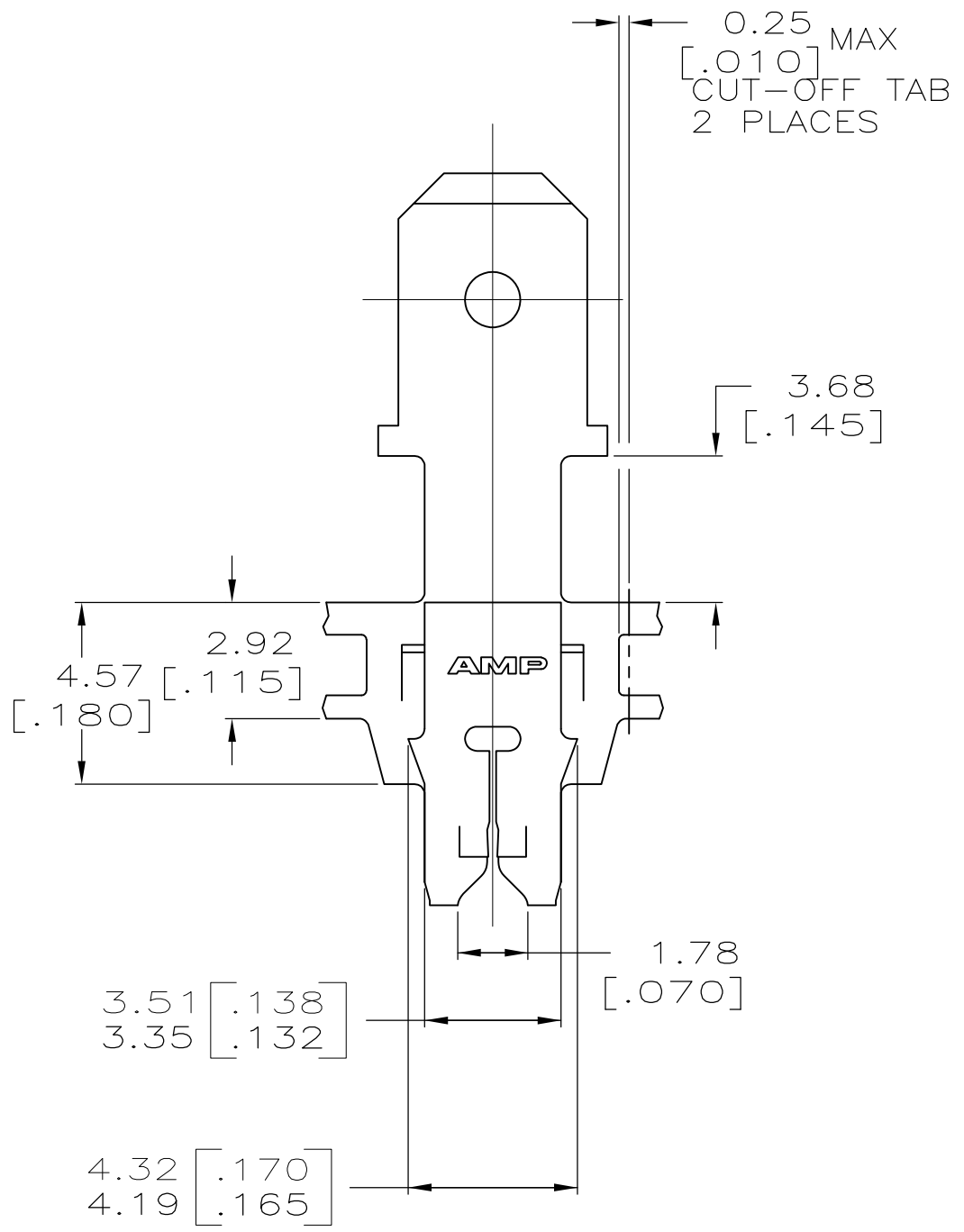


LOC		DIST		P		F		ZONE		LTR		REVISIONS	
DESCRIPTION		DATE		APPD									
AF	50									C1	ECR-15-005665	10AUG2015	BDA/PKS



1 CONTINUOUS STRIP ON REELS WITH TERMINALS LOCATED ON 8.38±0.08 [.330±.003] CENTERS.  
 2 SLOT ACCEPTS 0.25-0.36mm [#30-#27] AWG COPPER MAGNET WIRE.  
 SLOT ACCEPTS 0.32-0.45mm [#28-#25] AWG ALUMINUM MAGNET WIRE.  
 ALUMINUM WIRE RANGE APPLIES FOR POST-TIN PLATED VERSIONS ONLY.  
 2 WIRES OF THE SAME SIZE MAX PER SLOT.



63447-1

PART NO

DO NOT SCALE PRINT. UNLESS SPECIFIED DIMENSIONS IN mm [INCHES] TOLERANCES ON : 2 PLC DEC ± 0.25 [.010] 3 PLC DEC ± - ANGLES ± -	DR 14/JAN/95 MICHAEL S. FEHER		NAME	TAB, 4.75 [.187] FASTON™, MAG-MATE™	
	CHK 16/JAN/95 PHILLIP M. FORTNEY				
MATERIAL	APPD 16/JAN/95 NELSON E. NEFF	PRODUCT SPEC	SIZE	CAGE CODE	DRAWING NO
4M PRE-MILLED BRASS	APPD 16/JAN/95 TERRY L. SHUTTER	108-2012	C	00779	C-63447
FINISH	APPLICATION SPEC	WEIGHT	SCALE	REV.	
0.002032 [.000080] MIN TIN PER MIL-T-10727	114-2094	-	6:1	C1	

THIS DRAWING IS A CONTROLLED DOCUMENT FOR AMP INCORPORATED. IT IS SUBJECT TO CHANGE AND THE CONTROLLING ENGINEERING ORGANIZATION SHOULD BE CONTACTED FOR THE LATEST REVISION.