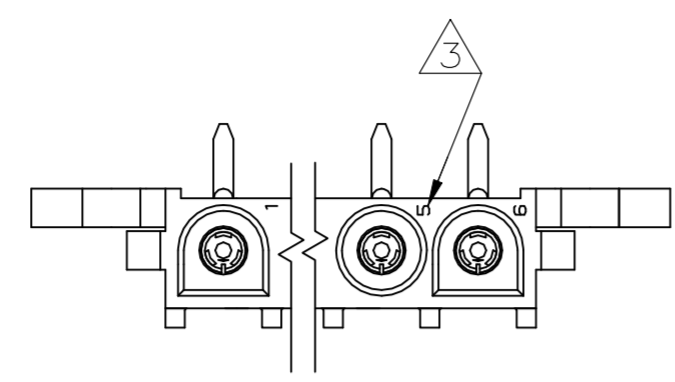
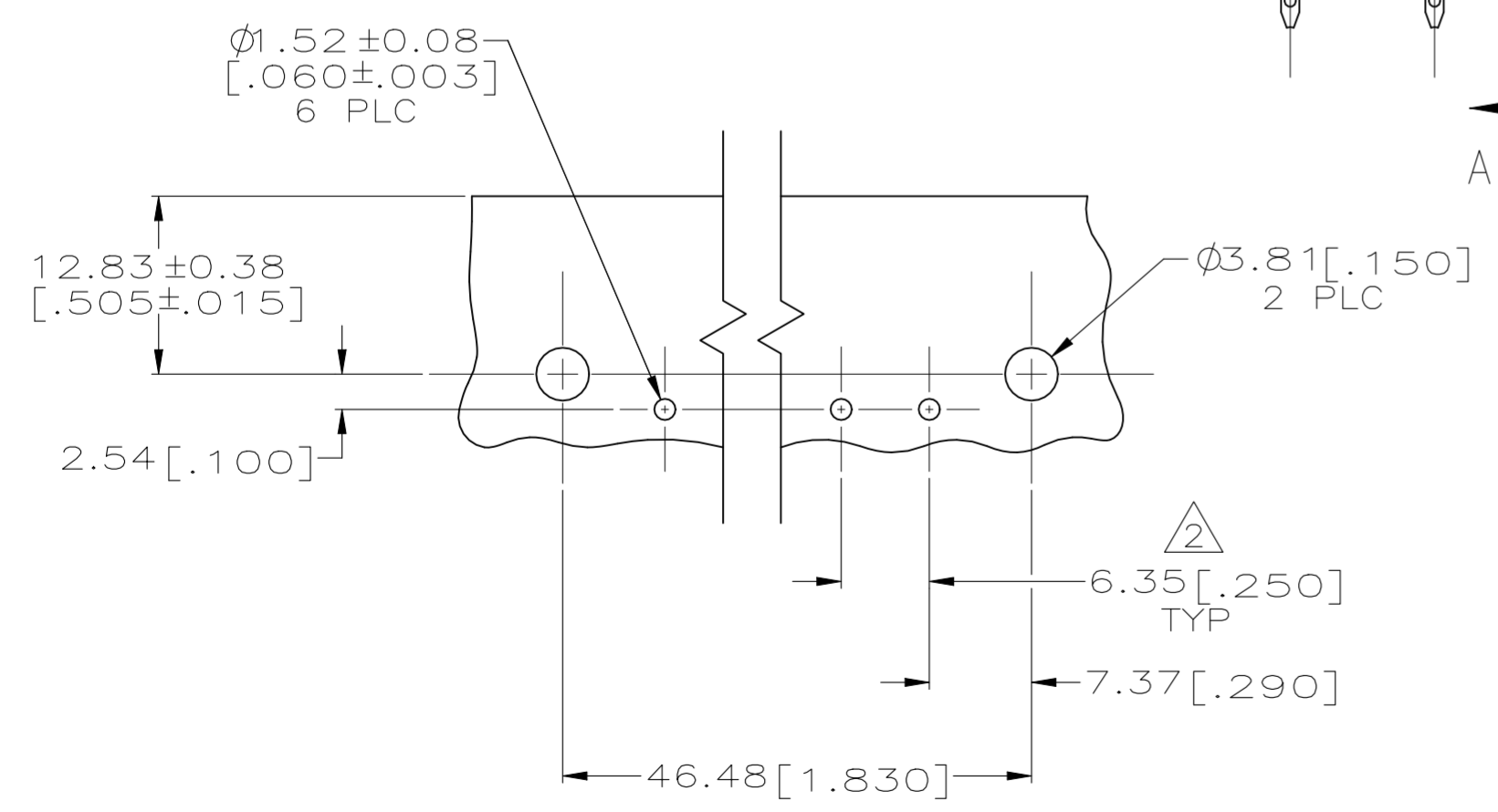
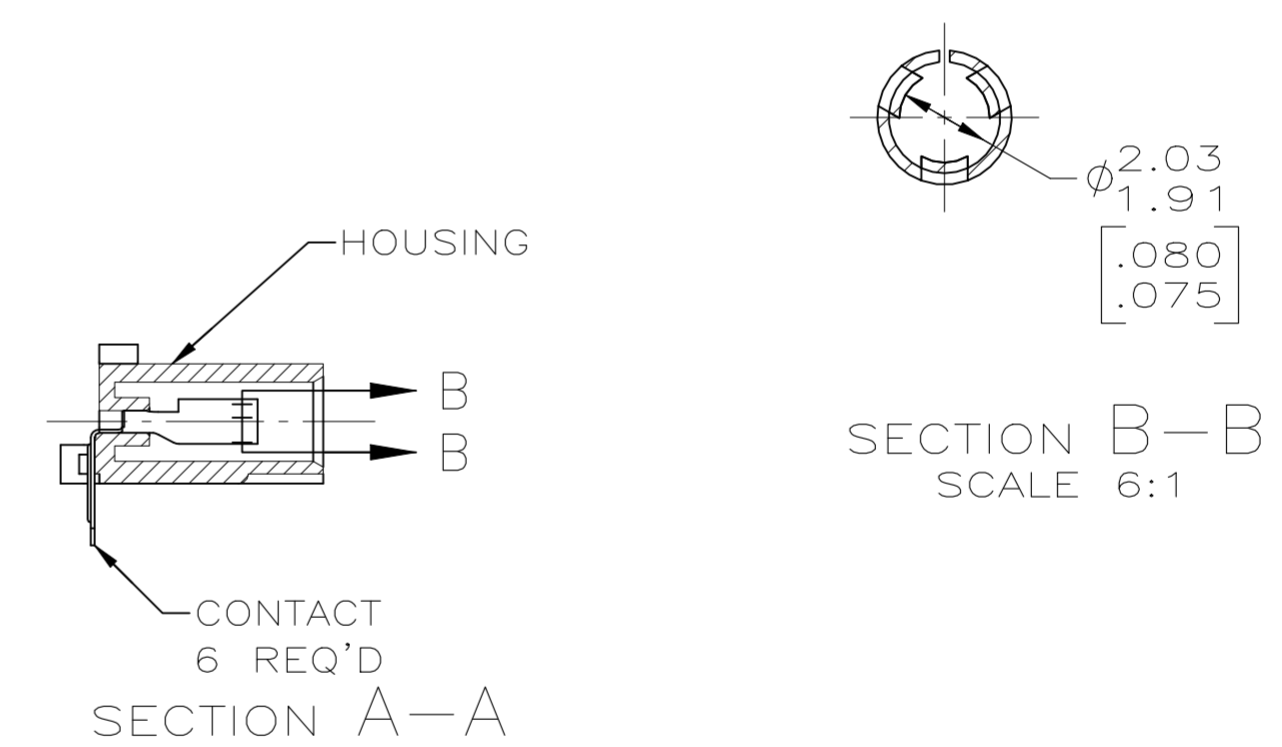
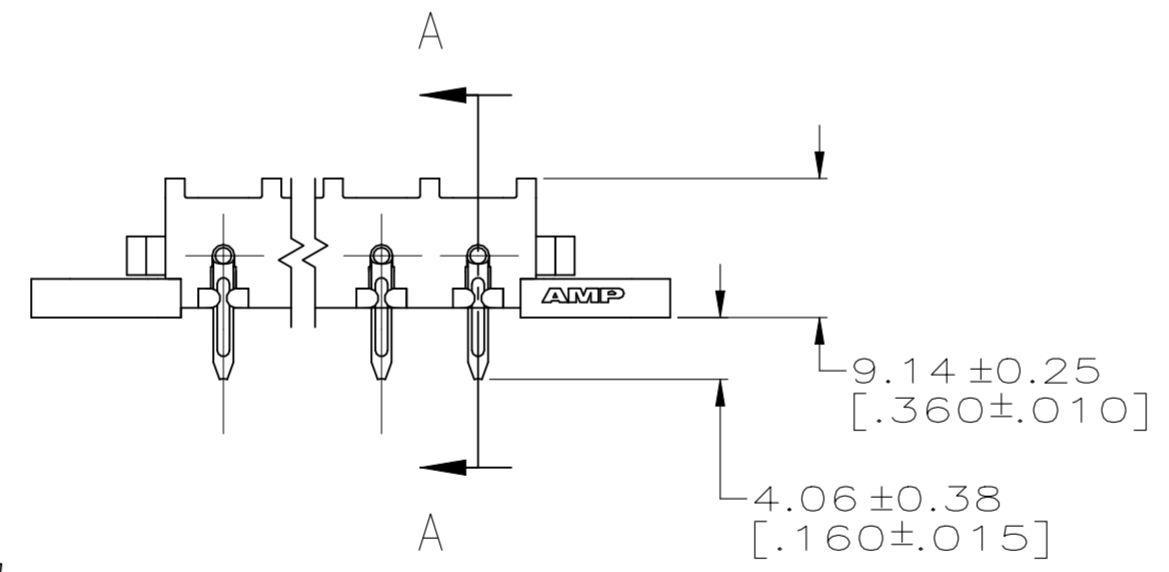
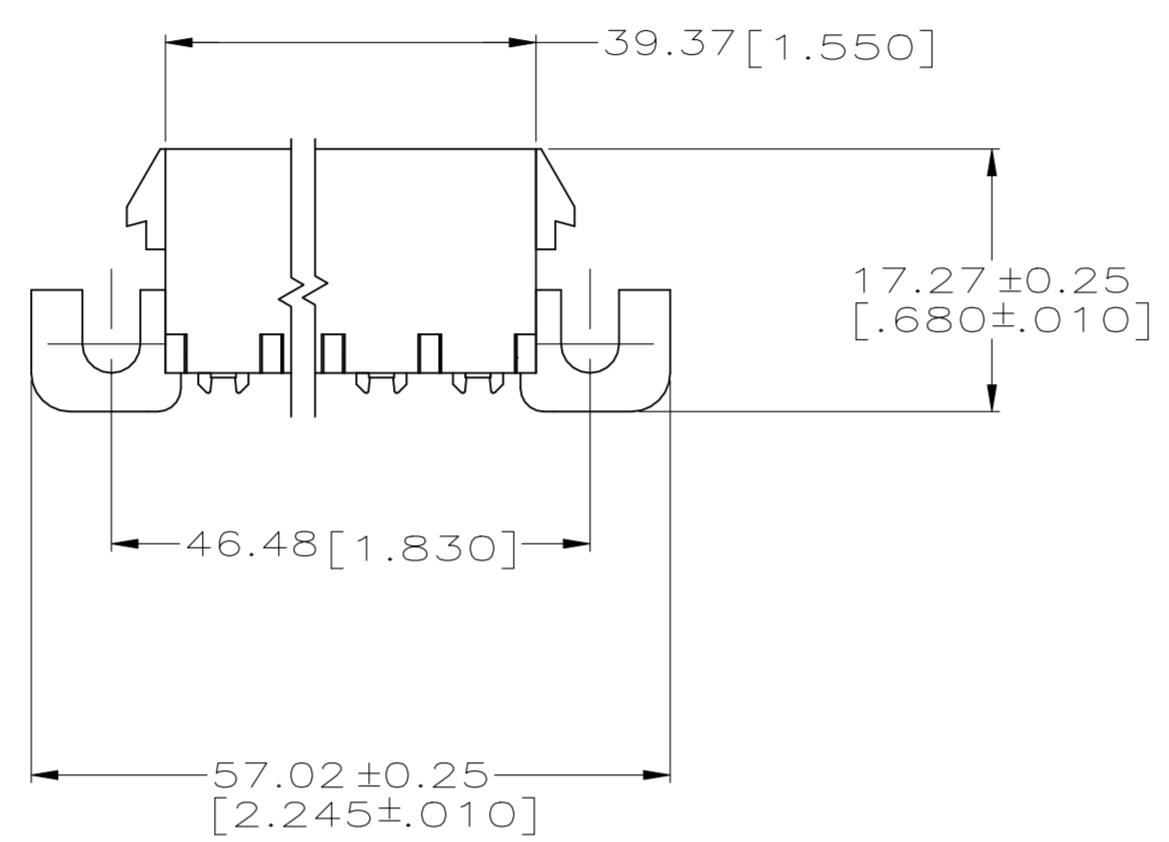


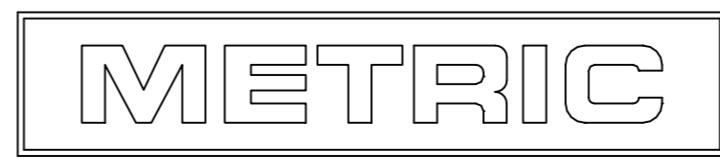
LOC		DIST		REVISIONS			
P	LTR	DESCRIPTION	DATE	DWN	APVD		
		D1	REVISED PER ECR-21-117154	01AUG2022	PJ	VS	



- PARTS MUST COMPLY WITH AMP SOLDERABILITY SPEC 109-11-5.
- TOLERANCE NON-CUMULATIVE.
- CIRCUIT IDENTIFICATION CHARACTERS ARE ADJACENT TO THE INDICATED CAVITIES, BUT LOCATION AND ORIENTATION MAY DIFFER FROM PRINT.
- DIMENSION SHOWN REPRESENT PRODUCT IN DRY CONDITION. ADDITIONAL 2% GROWTH DUE TO END USE LOCATION MOISTURE ABSORPTION MAY OCCUR AND SHOULD BE ACCOUNTED FOR.



RECOMMENDED MOUNTING HOLE PATTERN FOR 1.57 [.062] THICK P.C. BOARD



PHOS BRZ PRE-TIN	NYLON UL 94V-2	643235-1
CONTACT	HOUSING	PART NO

<small>THIS DRAWING IS A CONTROLLED DOCUMENT FOR AMP INCORPORATED. IT IS SUBJECT TO CHANGE AND THE CONTROLLING ENGINEERING ORGANIZATION SHOULD BE CONTACTED FOR THE LATEST REVISION.</small>		DWN	R. VESTAL	7-19-95
DIMENSIONS: mm [INCHES]		CHK	R. SWING	7-19-95
<small>TOLERANCES UNLESS OTHERWISE SPECIFIED:</small>		APVD	D. SELF	7-19-95
0 PLC	±	NAME		
1 PLC	±	SOCKET HEADER ASSEMBLY, RIGHT ANGLE MOUNT, 6 POSITION, UNIVERSAL MATE-N-LOK™		
2 PLC	±0.13 [.005]	PRODUCT SPEC	SIZE	
3 PLC	±	APPLICATION SPEC	CAGE CODE	DRAWING NO
4 PLC	±	WEIGHT	A2	00779
ANGLES	±0° 30'	CUSTOMER DRAWING	SCALE	2:1
FINISH	SEE TABLE	SHEET 1 OF 1 REV D1		