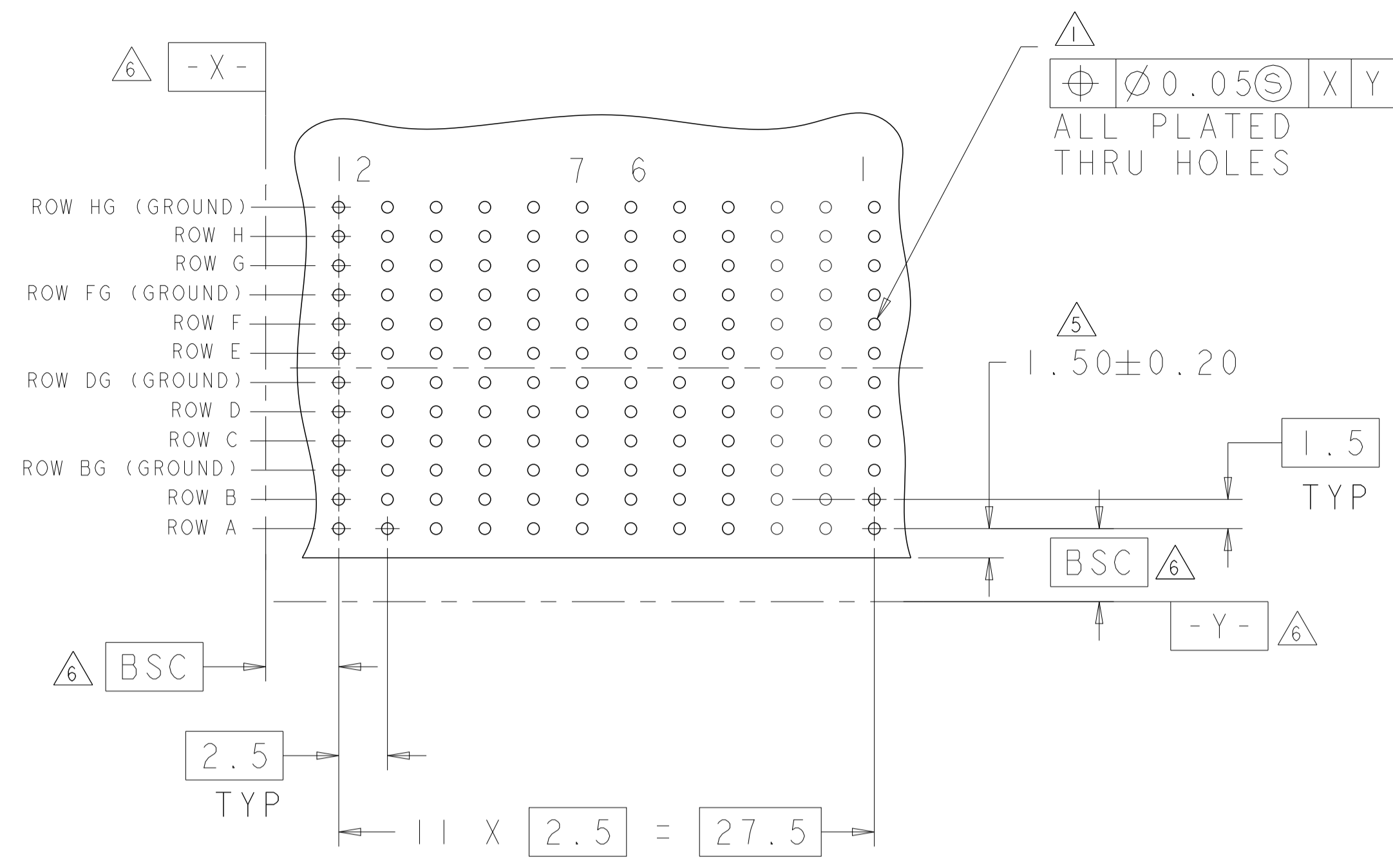
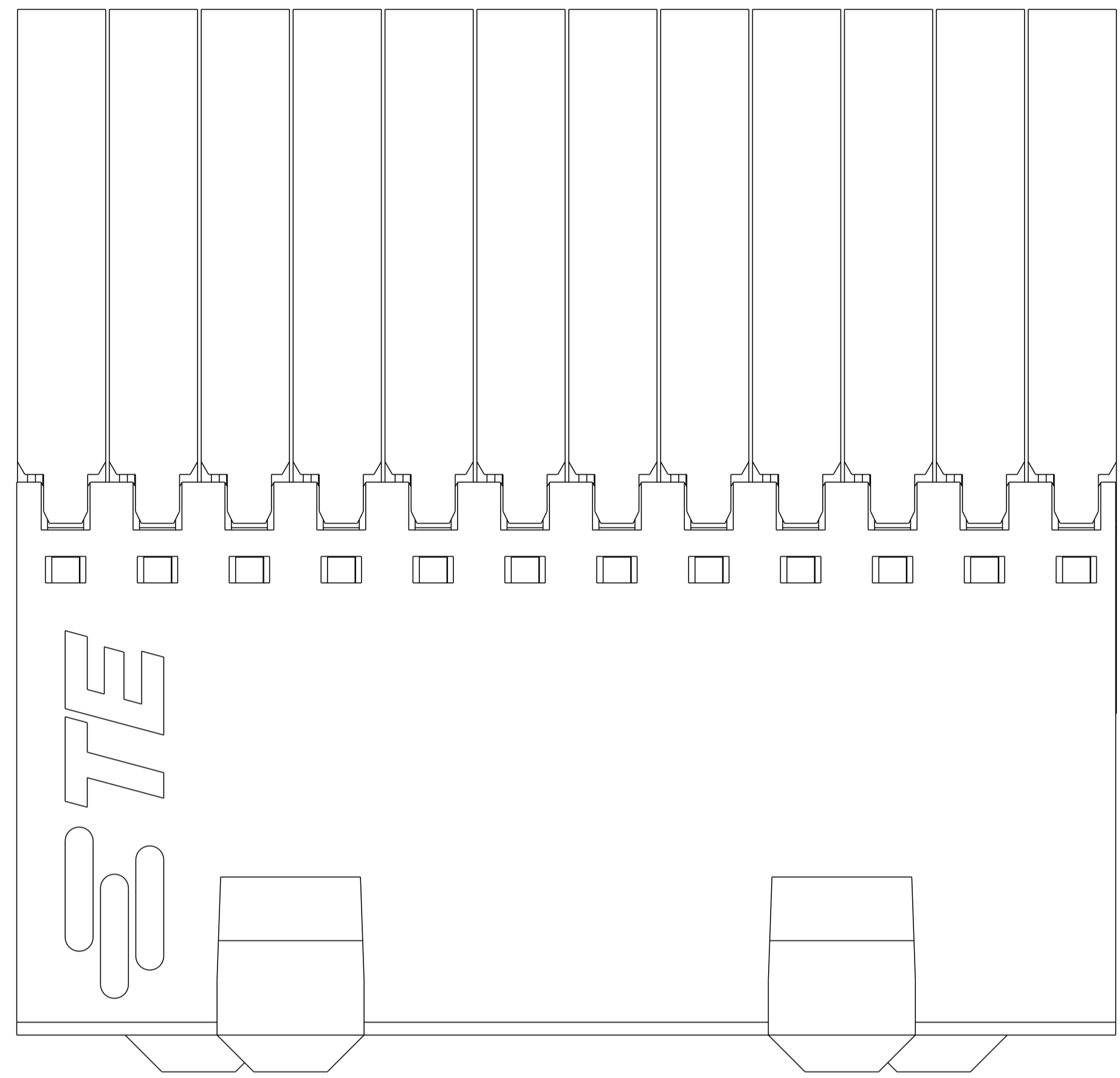
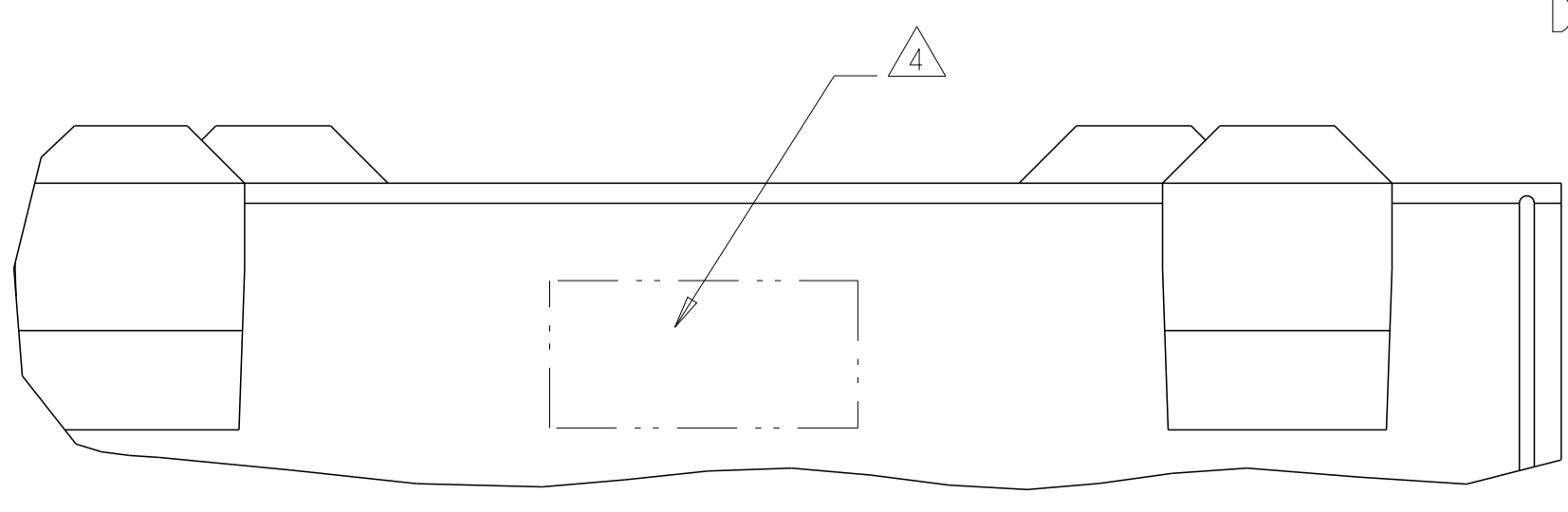
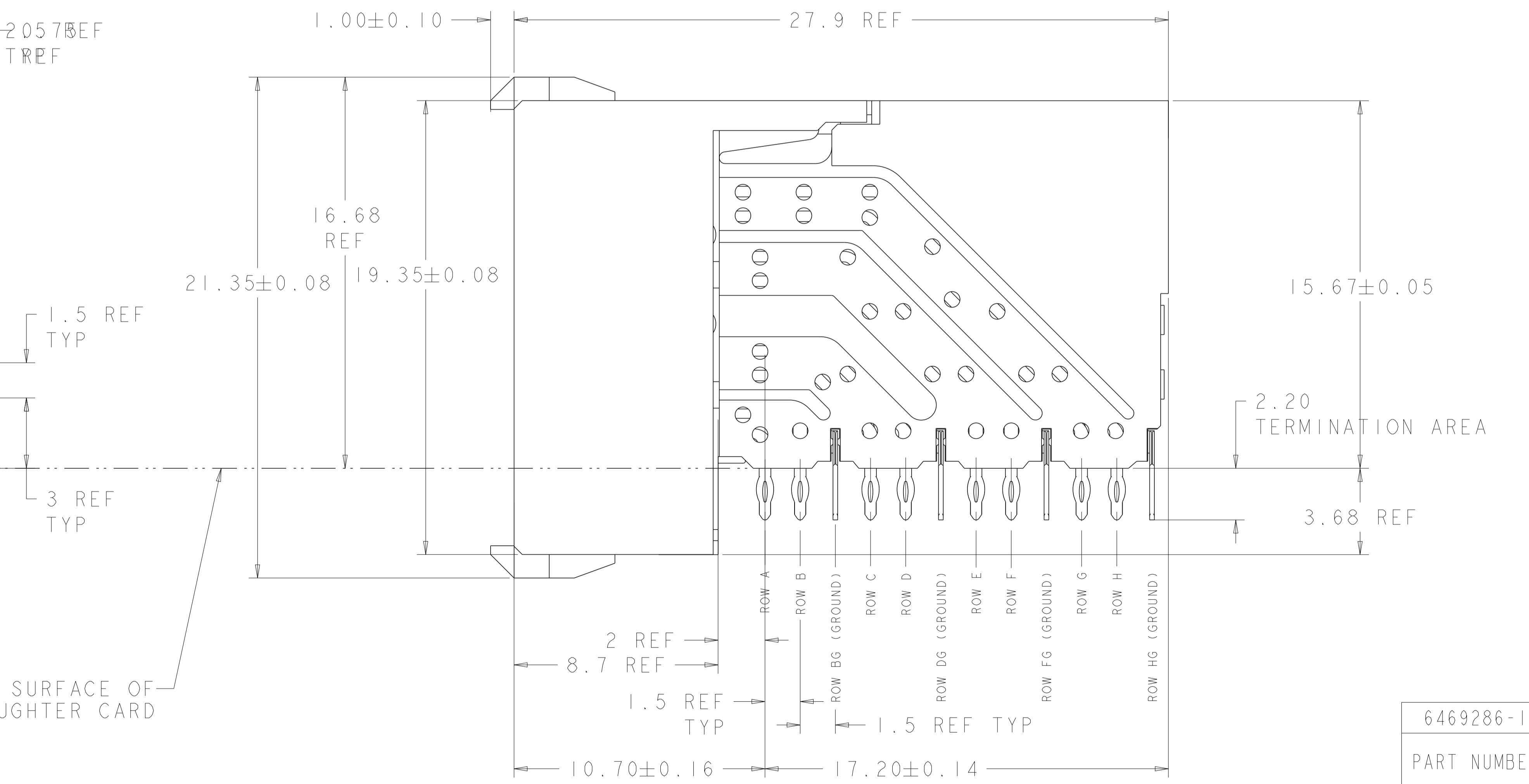
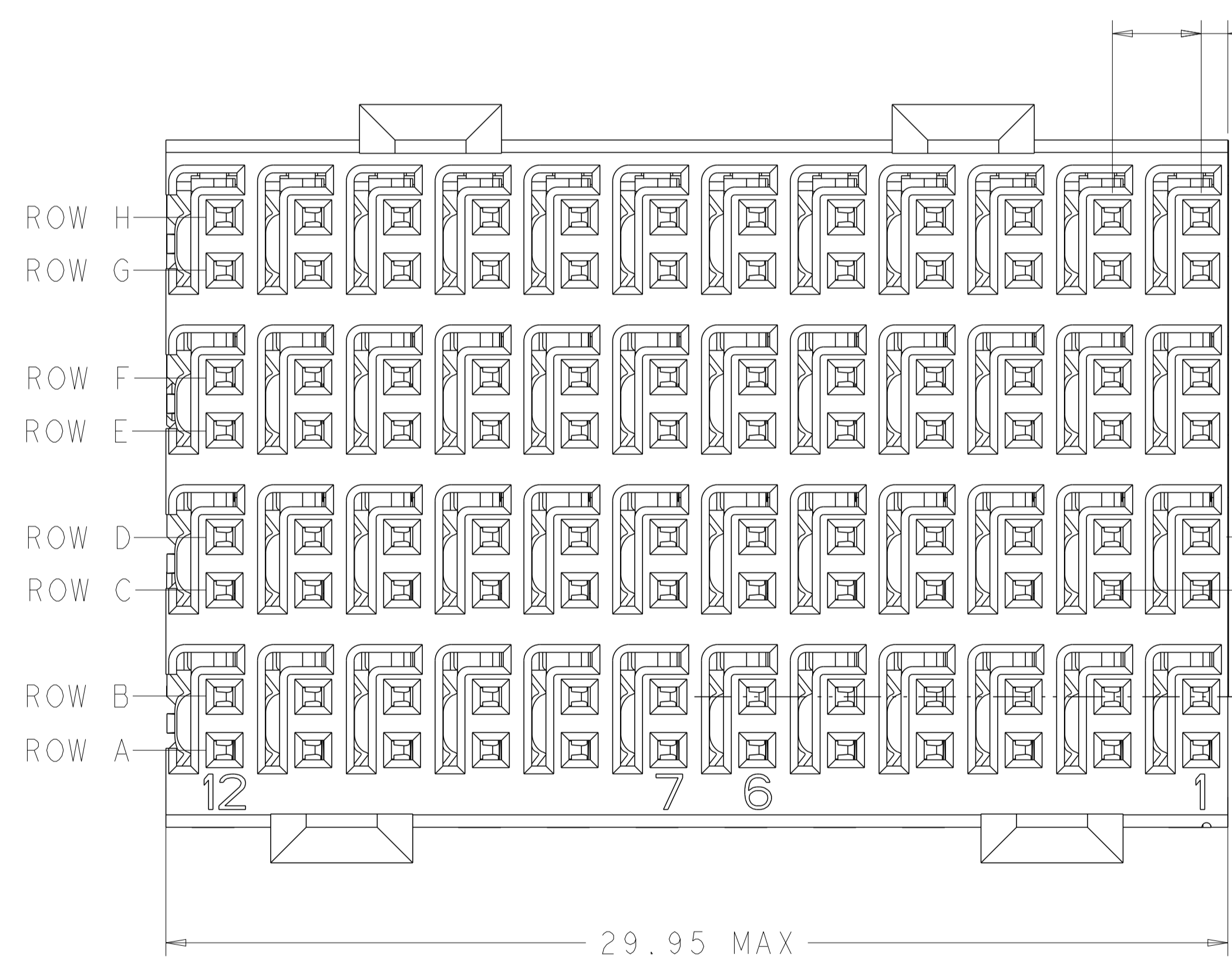


| REVISIONS | | | | |
|-----------|-----|---------------------------|-----------|-------|
| P | LTN | DESCRIPTION | DATE | APVD |
| D | | REVISED PER ECO-14-005095 | 21APR2014 | AP RP |
| E | | REVISED PER ECO-16-008845 | 23SEP2016 | AP RP |
| F | | REVISED PER ECO-17-013036 | 13SEP2017 | AP RP |



- 1 REFERENCE APPLICATION SPEC 114-13059 FOR RECOMMENDED PLATED THRU HOLE DIAMETER AND PLATING THICKNESSES.
- 2 MATERIAL:
SHIELD - PHOSPHOR BRONZE
CONTACT - COPPER-NICKEL-SILICON
HOUSING, CHICKLET AND CHICKLET COVER - GLASS FILLED POLYESTER, UL 94V-0 RATED.
- 3 FINISH: SIGNAL AND GROUND CONTACTS:
MATING AREA: MEETS THE PERFORMANCE REQUIREMENTS OF PRODUCT SPECIFICATION 108-2055; BASED ON TELCORDIA GR-1217-CORE, APPLICATIONS IN UNCONTROLLED ENVIRONMENTS
COMPLIANT PIN AREA: 0.5 μm MIN MATTE TIN OVER BASE PLATING
- 4 CONNECTOR MARKED WITH PART NUMBER AND DATE CODE IN APPROXIMATE AREA SHOWN
- 5 DIMENSION APPLIES TO CENTERLINE OF THRU HOLE.
- 6 DATUMS AND BASIC DIMENSIONS ESTABLISHED BY CUSTOMER.
- 7. CONTACT AREA LUBRICATED WITH BELLCORE APPROVED LUBRICANT. TECHNICAL REFERENCE: GR-1217-CORE, ISSUE 1, NOVEMBER 1995.

RECOMMENDED PC BOARD LAYOUT,
 DAUGHTER BOARD,
 COMPONENT SIDE SHOWN
 SCALE 4:1



6469286-1
 PART NUMBER

| | | | |
|--|--|---------------------------------|---|
| THIS DRAWING IS A CONTROLLED DOCUMENT. | | OWN S. J. MAGARO 26 JUL 2004 | TE Connectivity |
| DIMENSIONS: mm | | CHK R. A. PATTERSON 26 JUL 2004 | |
| TOLERANCES UNLESS OTHERWISE SPECIFIED: | | APVD H. PATTERSON 17 MAY 2007 | NAME RECEPTACLE ASSEMBLY, 4 PAIR, 30mm, HMZd |
| 0 PLC #+ 1 PLC #+ 2 PLC #+ 3 PLC #+ 4 PLC #+ ANGLES #+ FINISH #+ MATERIAL #+ FINISH #+ | | PRODUCT SPEC | |
| MATERIAL #+ FINISH #+ | | APPLICATION SPEC | RESTRICTED TO |
| CUSTOMER DRAWING | | WEIGHT | SIZE A100779 |
| SCALE 8:1 | | CAGE CODE | DRAWING NO. C=6469286 |
| SHEET 1 OF 1 | | REV F | |