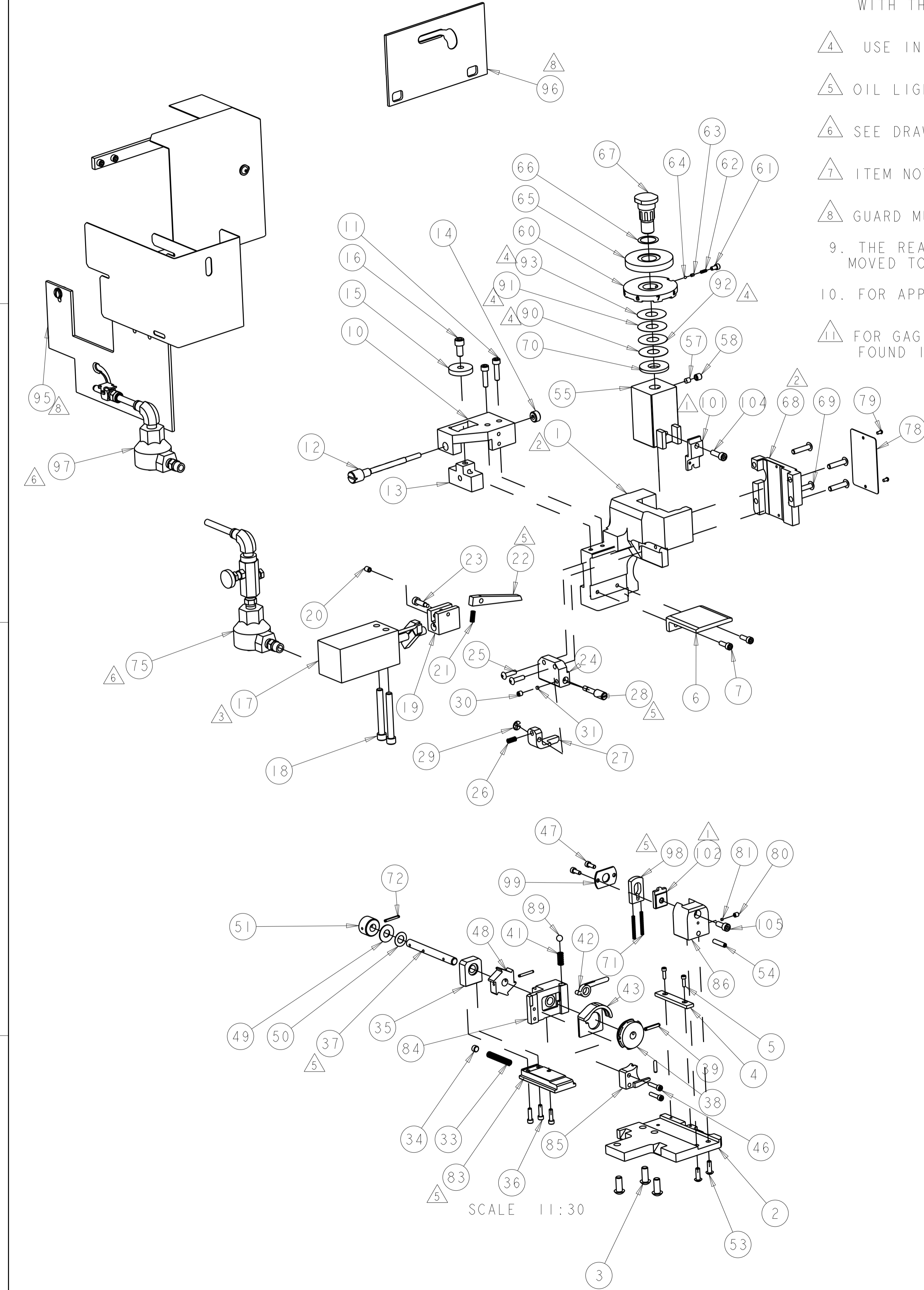


PART NUMBER	REV	FIRST USED	MACHINE	FEED
680643-2	G	565435-5	BENCH MODEL K	AIR FEED
680643-3	G	354500-1	BENCH MODEL G	AIR FEED



- △ RECOMMENDED SPARE PARTS.
- △ GREASE LIGHTLY.
- △ ITEM 17, AIR CYLINDER, SHOULD BE ROTATED 90 DEG. WITH THE PORT UP FOR -3 ONLY.
- △ USE IN COMBINATION TO ACHIEVE PROPER CRIMP HEIGHT.
- △ OIL LIGHTLY.
- △ SEE DRAWING FOR COMPONENTS.
- △ ITEM NOT SHOWN ON ASSEMBLY.
- △ GUARD MUST BE IN PLACE WHEN OPERATING APPLICATOR.
- 9. THE REAR HOLD-DOWN ON THE TERMINATING UNIT MUST BE MOVED TO THE FRONT OF THE BASE PLATE. FOR (-3) ONLY.
- 10. FOR APPLICATION TO INSULATION .080-.115 DIA. (UNSTRIPPED).
- △11 FOR GAGING OF THE CRIMPING CHAMBER, REFER TO DIE NUMBER 68166-1 FOUND IN FIGURE 11-2.

TERMINAL NAME, SPARE WIRE CAP
2-324485-1
APPL INSTRUCTION 408-8082 408-2254
LAYOUT L2086
APPL SPECIFICATION

LOC	DIST	REV	DATE	BY	CHK	APPV
A	66					

QTY	UNIT	DESCRIPTION	ITEM NO
1	1	DISC, WIRE CRIMP	65
1	1	BALL, STEEL	64
1	1	SPRING ASSIST AMP-O-MATOR APPLICATOR	63
1	1	SPRING, COMPRESSION	62
1	1	SCR, SKT HD CAP 6-32 X .250	61
1	1	DISC, INSULATION	60
1	1	SCR, SET, CUP POINT 1/4-20 X .250	58
1	1	PLUG, NYLON	57
1	1	RAM	55
1	1	SCR, SET, CUP POINT 8-32 X .750	54
2	2	SCR, BTN SKT HD CAP 8-32 X .500	53
1	1	KNOB, INDEX	51
1	1	WASHER, CURVED	50
1	1	RACE, THRUST BEARING	49
1	1	WHEEL, INDEX	48
2	2	SCR, SKT HD CAP 6-32 X .375	47
2	2	SCR, SKT HD CAP 6-32 X .625	46
1	1	DRAG, TAPE	43
1	1	LIFTER, DRAG	42
1	1	SPRING, COMPRESSION	41
1	1	PIN, SLOTTED SPRING .125 X .750	39
1	1	WHEEL, TAPE FEED	38
1	1	SHAFT, INDEX	37
3	3	SCR, SKT HD CAP 6-32 X .500	36
1	1	SUPPORT, BEARING	35
1	1	RETAINER, SPRING	34
1	1	SPRING, COMPRESSION	33
1	1	PLUG, NYLON	31
1	1	SCR, SET, CUP POINT 10-32 X .188	30
1	1	RING, RETAIN, EXTERN, 3/16 E-RING	29
1	1	SCREW, ADJ.	28
1	1	STRIPPER, UPPER	27
1	1	SPRING, COMPRESSION	26
2	2	SCR, BTN SKT HD CAP 8-32 X .625	25
1	1	MOUNT, STRIPPER	24
1	1	SCREW, SHLD, SOC HD SELF-LOCKING, PATCH TYPE	23
1	1	PAWL, INDEX	22
1	1	SPRING, COMPRESSION	21
1	1	SCR, SET, CUP POINT 10-32 X .250	20
1	1	CLEVIS, CYLINDER	19
2	2	SCR, SKT HD CAP 1/4-20 X 2.000	18
1	1	CYLINDER, AIR, 1" STROKE, S.A.	17
1	1	SCR, SKT HD CAP 1/4-20 X .500	16
1	1	CLAMP WASHER	15
1	1	COLLAR, SHAFT	14
1	1	FEED ADJUSTMENT BLOCK	13
1	1	FEED ADJUSTING SCREW, AIR FEED	12
2	2	SCR, SKT HD CAP 10-32 X .750	11
1	1	MOUNT, CYLINDER (CAST COMPLETE)	10
2	2	SCR, SKT HD CAP 8-32 X .500	7
1	1	GUIDE, TERMINAL	6
2	2	SCR, SKT HD CAP 4-40 X .375	5
1	1	RETAINER, SLIDE	4
3	3	SCR, BHSC, SELF-LOCKING, 1/4-20 X .625	3
1	1	PLATE, BASE	2
1	1	HOUSING	1

1	1	SCR, SKT HD CAP 10-32 X .500	105
1	1	SCR, SKT HD CAP 10-32 X .625	104
1	1	ANVIL	102
1	1	INDENTER	101
1	1	PLATE, RETAINER	99
1	1	STRIPPER, LOWER	98
1	1	AIR FEED VALVE ASSEMBLY	97
1	1	CLEAR POLYCARBONATE	96
1	1	GUARD, ASSY, SIDE FEED DUAL	95
1	1	DOCUMENTATION PACKAGE	94
1	1	SHIM	93
1	1	SHIM	92
1	1	SHIM	91
1	1	SHIM	90
1	1	BALL, STEEL	89
1	1	HOLDER, LOWER TOOL	86
1	1	GUIDE, TAPE	85
1	1	HOUSING, TAPE DRAG	84
1	1	SLIDE, RETRACT	83
1	1	PLUG, NYLON	81
1	1	SCR, SET, CUP POINT 8-32 X .188	80
2	2	SCREW, DRIVE	79
1	1	PLATE, IDENTIFICATION	78
1	1	AIR FEED VALVE ASSEMBLY	75
2	2	PIN, SLOTTED SPRING .094 X .750	72
2	2	SPRING, COMPRESSION	71
1	1	WASHER, RAM (.110)	70
4	4	SCR, BTN SKT HD CAP 10-32 X .875	69
1	1	CAP, RAM	68
1	1	POST, RAM	67
1	1	WASHER, WAVE SPRING	66

DIMENSIONS: IN 	TOLERANCES UNLESS OTHERWISE SPECIFIED: 0 PLC ±.1 1 PLC ±.02 2 PLC ±.005 3 PLC ±.005 4 PLC ±.005 ANGLES ±.005	DWG. STAKEM 18JAN2007 CHK. T. ELBIN 18JAN2007 APVD. T. ELBIN 18JAN2007	STE TE Connectivity Harrisburg, PA 17105-3608
DIMENSIONING AND TOLERANCING PER ASME Y14.5M-2009		NAME: TAPE FEED HDM APPLICATOR	SIZE: A 00779 C=680643
MATERIAL:		WEIGHT:	RESTRICTED TO:
FINISH:		SCALE: 2:5	SHEET 1 OF 1 REV G