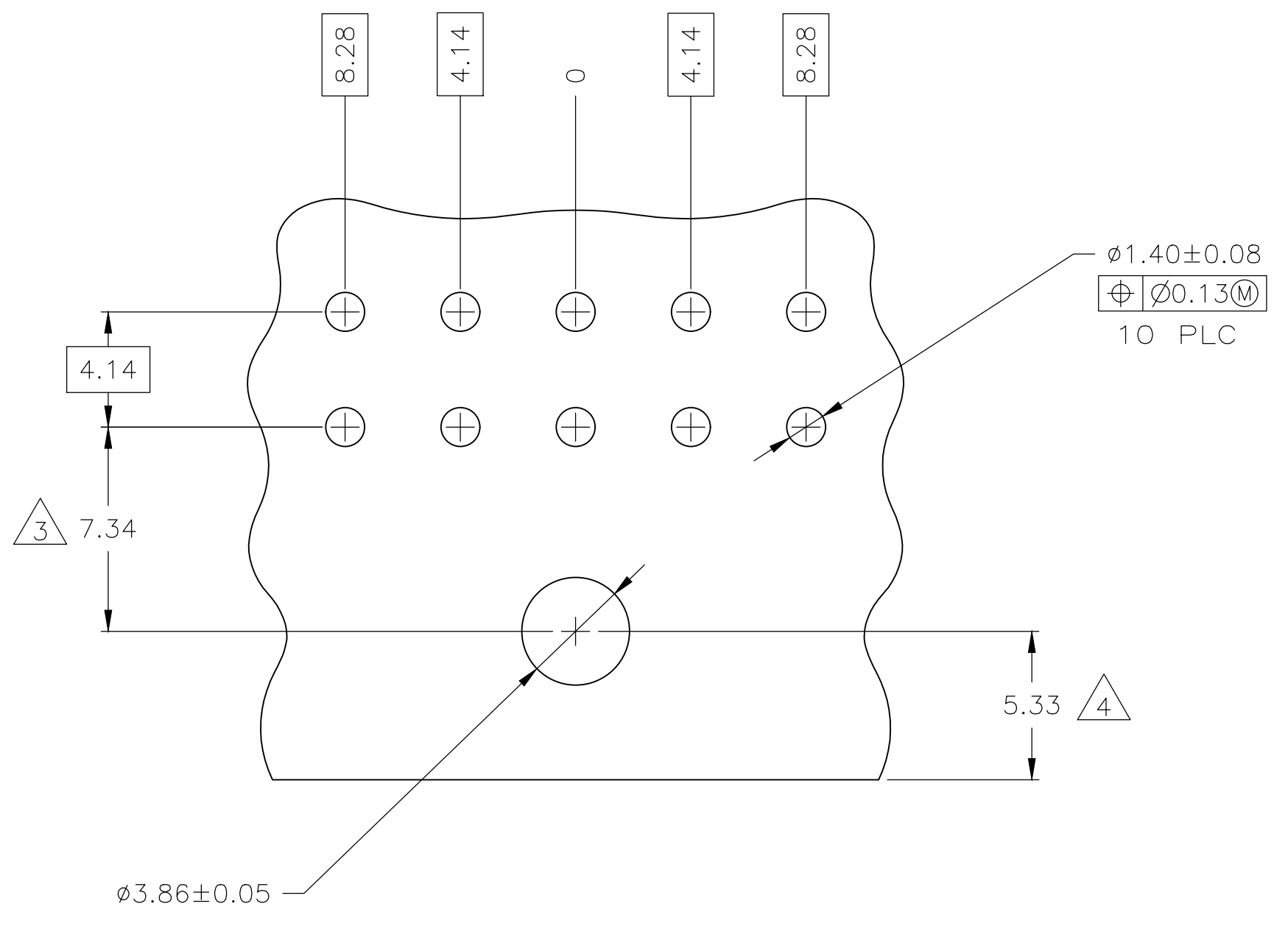
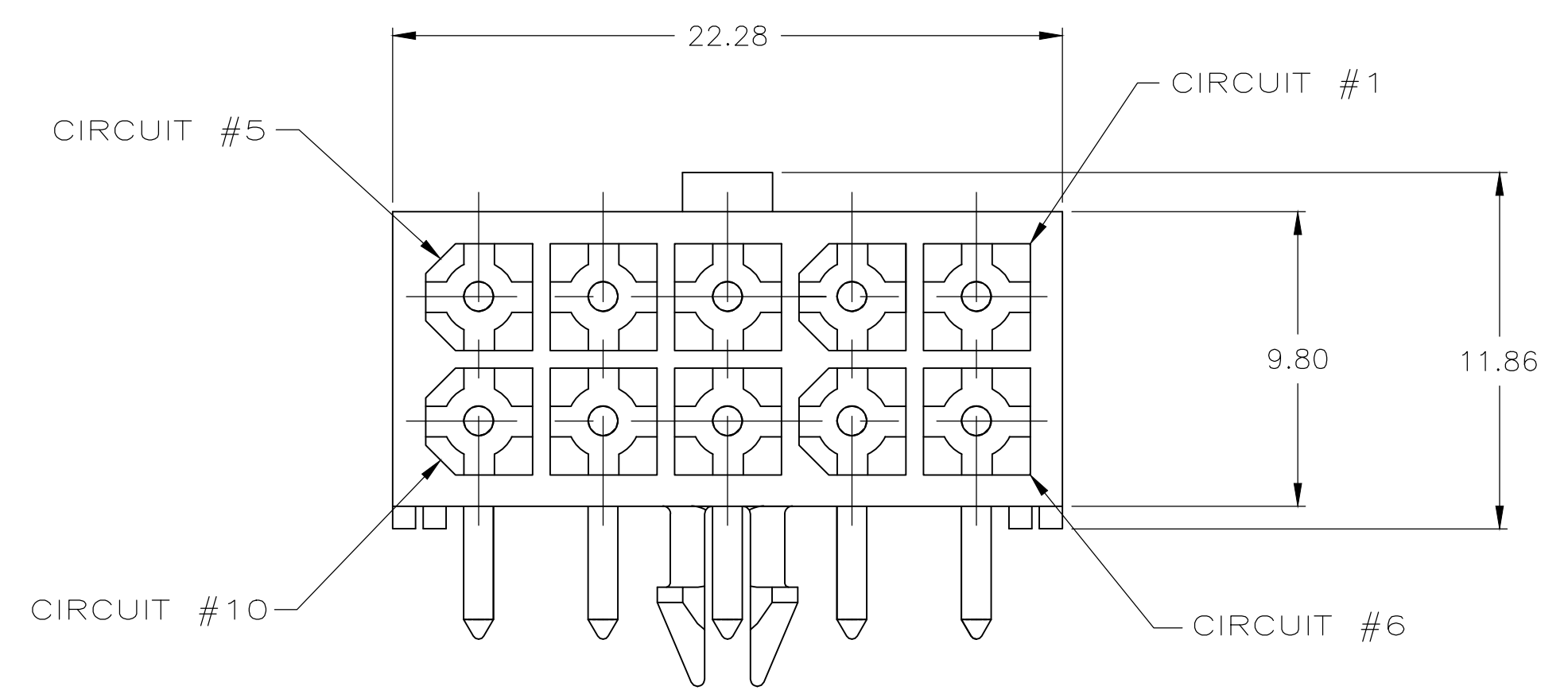
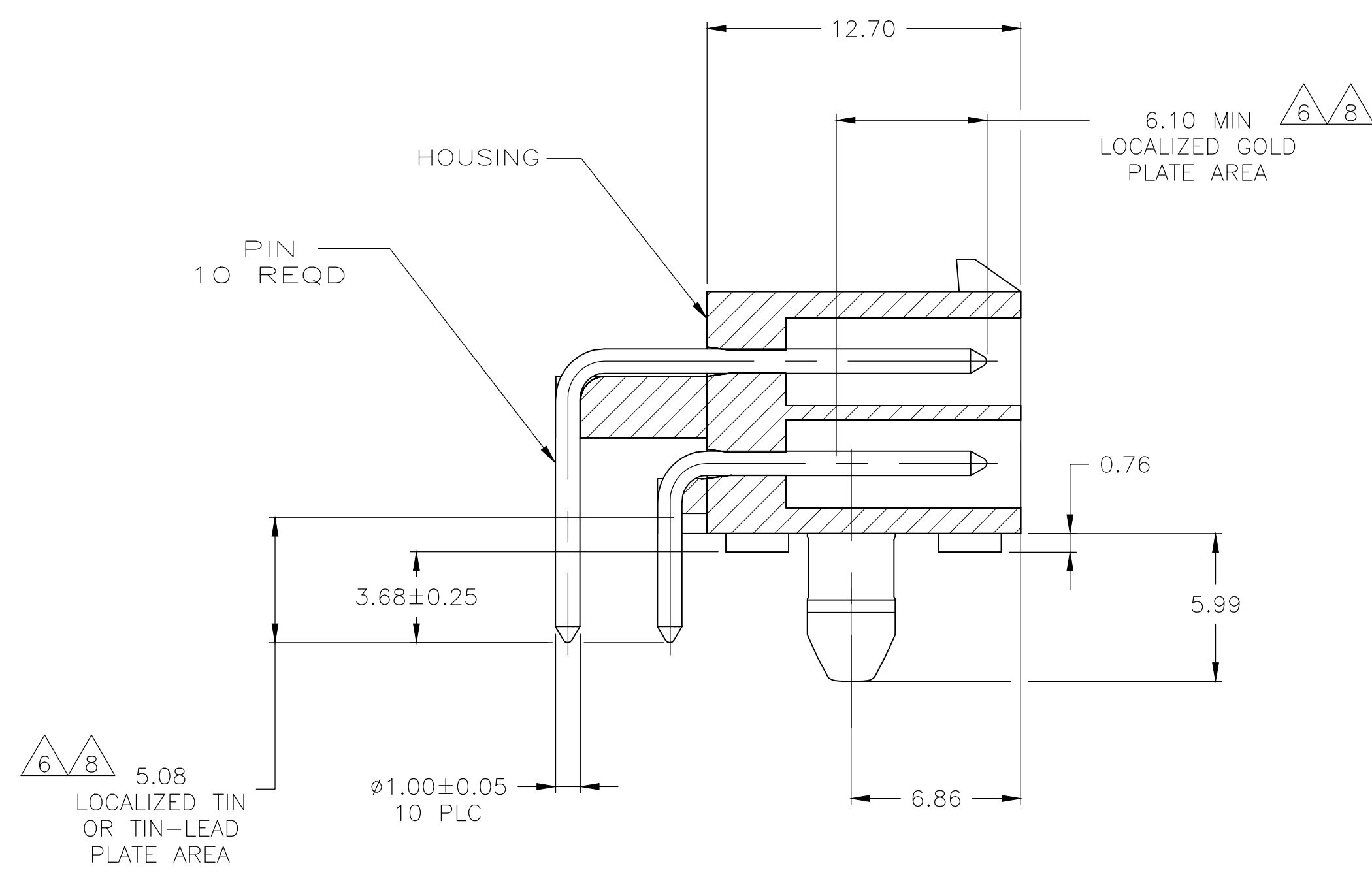


LOC	DIST	REVISIONS					
CM	00	P	LTR	DESCRIPTION	DATE	DWN	APVD
		H1		REVISED PER ECR-18-005392	23JUL2015	BDA	SG



RECOMMENDED MOUNTING HOLE PATTERN FOR 1.57 THICK P.C. BOARD

- PINS TO COMPLY WITH AMP SOLDERABILITY SPEC 109-11-3.
- MATES WITH PLUG P/N 770580-1.
- COORDINATE DIMENSION APPLIES FROM CENTER OF ACTUAL FEATURE.
- RECOMMENDED FOR EDGE MOUNTING.
- 0.00381 MIN MATTE TIN LEAD OVER 0.00127 MIN NICKEL ENTIRE LENGTH OF PIN.
- 0.00076 MIN GOLD PLATE IN THE LOCALIZED PLATE AREA, 0.00381 MIN MATTE TIN LEAD IN THE LOCALIZED PLATE AREA, BOTH OVER 0.00127 MIN NICKEL.
- 0.00381 MIN MATTE TIN OVER 0.00127 MIN NICKEL ENTIRE LENGTH OF PIN.
- 0.00076 MIN GOLD PLATE IN THE LOCALIZED GOLD PLATE AREA, 0.00381 MIN MATTE TIN IN THE LOCALIZED TIN PLATE AREA, BOTH OVER 0.00127 MIN NICKEL.

3.68	.145	22.28	.877
1.57	.062	12.70	.500
1.40	.055	9.80	.386
1.00	.039	8.28	.326
0.76	.030	7.34	.289
0.25	.010	6.86	.270
0.13	.005	6.10	.240
0.08	.003	5.99	.236
0.05	.002	5.33	.210
0.00381	0.000150	5.08	.200
0.00127	0.000050	4.14	.163
0.00076	0.000030	3.86	.152
MM	IN	MM	IN

CONVERSION TABLE

OBSOLETE	BRASS	8	NYLON, UL94V-0	WHITE	1-770971-1
	BRASS	7	NYLON, UL94V-0	WHITE	1-770971-0
	BRASS	6	NYLON, UL94V-0	WHITE	-770971-2-
	BRASS	5	NYLON, UL94V-0	WHITE	-770971-1-
	MATERIAL	FINISH	MATERIAL	COLOR	PART NO.

THIS DRAWING IS A CONTROLLED DOCUMENT.

DIMENSIONS:	TOLERANCES UNLESS OTHERWISE SPECIFIED:	DIN S. CARPENTER 24JUL03	TE Connectivity
mm	0 PLC ± -	CHK C. JONES 24JUL03	NAME
	1 PLC ± -	APVD G. JONES 24JUL03	PRODUCT SPEC
	2 PLC ± -		APPLICATION SPEC
	3 PLC ± 0.13		SIZE
	4 PLC ± -		SCALE
	ANGLES ± -		RESTRICTED TO

MATERIAL SEE TABLE FINISH SEE TABLE WEIGHT -- A1 00779 C=770971

CUSTOMER DRAWING SCALE 5:1 SHEET 1 OF 1 REV H1