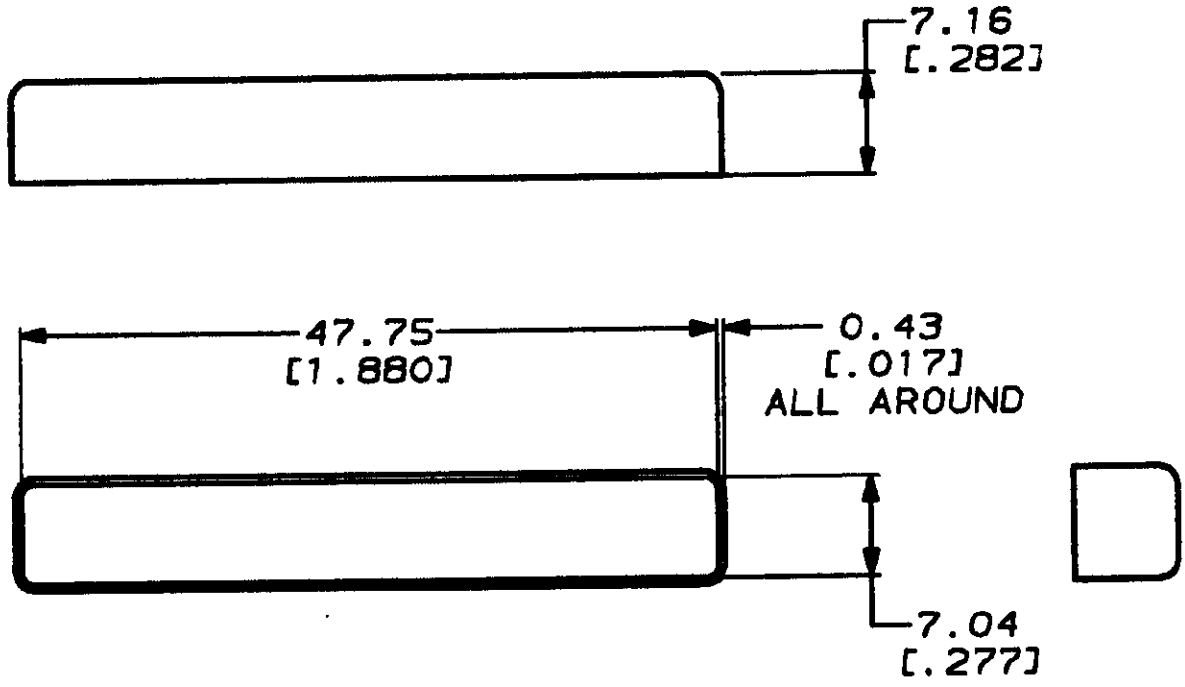


THIS DRAWING IS A CONTROLLED DOCUMENT FOR AMP INCORPORATED.
 IT IS SUBJECT TO CHANGE AND THE CONTROLLING ENGINEERING
 ORGANIZATION SHOULD BE CONTACTED FOR THE LATEST REVISION.

DRAWING MADE IN THIRD ANGLE PROJECTION

LOC	DIST	P	F	REVISIONS			
BD	95			LTR	DESCRIPTION	DATE	APPROVED
				0	RELEASED WAS 92-4640-8-1, NPR 4338	08/02/92	TS

THIS DRAWING IS UNPUBLISHED. BY AMP INCORPORATED. ALL INTERNATIONAL RIGHTS RESERVED. © COPYRIGHT 19



786531-1
PART NO

DO NOT SCALE PRINT. UNLESS SPECIFIED DIMENSIONS IN mm (IN) TOLERANCES ON: 3/16 PLC DEC ± 0.13 (.005) 3/16 PLC DEC ± - ANGLES ± -	DR 08/02/92 J. McCLINTON	AMP AMP Incorporated Harrisburg, PA 17105-3608
	CHK 9-15-92 R STONE	
MATERIAL RED POLYSTYRENE	APPD 9-21-92 T SPANGLER	SIZE A
	APPD 9-21-92 J ASSINI	CAGE CODE 00779
FINISH -	PRODUCT SPEC -	DRAWING NO C=786531
	APPLICATION SPEC -	SCALE 2:1
WEIGHT -	SHEET 1 of 1	CUSTOMER DRAWING