

Einsatzbereich:- 940 Einbaudose
 - 940 Winkeleinbaudose
 - 740 htec Einbaudose
 - 740 htec Winkeleinbaudose

TE Teile Nr.: 61-0195-011-P00
IC Ref. Nr.: 61.195.11

Elektrische Werte

Bemessungsstrom max. 66 A*
 Durchgangswiderstand < 1 mOhm

Werkstoff

Kontakt Messing, vergoldet

Anschluss

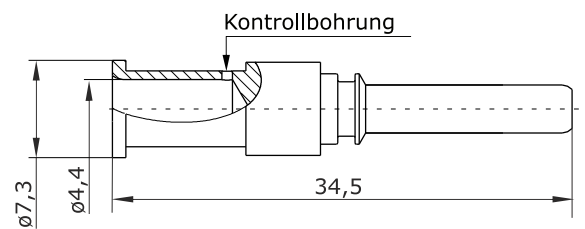
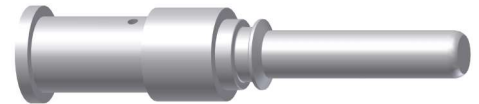
Anschlussart Crimp
 Anschlussbereich 6,0 mm² - 10,0 mm²
 Abisolierlänge 9,5 mm
 Crimpeinstellungen sind individuell zu wählen

Mechanische Werte

Steckzyklen 500

Werkzeuge (nicht im Lieferumfang enthalten)

Akkucrimpzange Best.-Nr.: C0.313.00
 analoge Crimpzange Best.-Nr.: C0.008.00
 Positioniereinsatz für 3,6 mm Kontakte Best.-Nr.: C0.247.00
 Crimpmaschine Best.-Nr.: WA10672
 Digitaler Crimpeinsatz, groß Best.-Nr.: C0.374.00



Hauptabmessungen

Kontaktstift





Contact pin $\varnothing 3.6$ mm

for: - 940 Receptacle
- 940 Receptacle Angled
- 740 htec Receptacle
- 740 htec Receptacle Angled

TE part number: 61-0195-011-P00
IC reference number: 61.195.11

Electrical Data

rated current max. 66 A*
contact resistance < 1 mOhm

Material

contact brass, gold plated

Termination

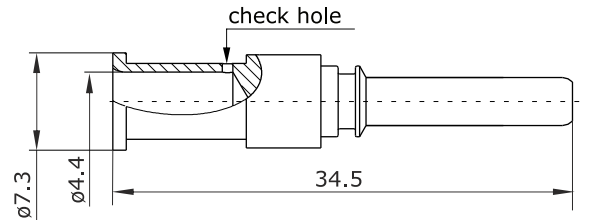
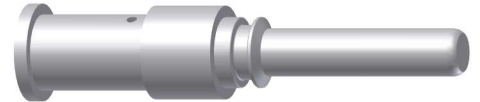
kind of termination crimp
cross-section 6 mm² - 10.0 mm²
stripping length 9.5 mm
crimp settings select individually

Mechanical data

mating cycles 500

Tools (not part of product contents)

battery crimping tool order code: C0.313.00
analog crimping tool order code: C0.008.00
positioner for 3.6 mm contacts order code: C0.247.00
crimping machine order code: WA10672
digital crimp insert, large order code: C0.374.00



Main Dimensions
contact pin

