

# AMPOWER QUICK DISCONNECT

## TERMINALS FOR TRACTION MOTOR AND CAR BODY LEADS

The AMPOWER quick disconnect terminals have been specifically designed for use in the transportation industry since they provide a highly reliable and economic means of terminating large power cables and leads. They are ideally suited for a variety of applications such as motors, generators, transformers, plus numerous other electrical equipment subjected to shock and vibration as well as long continuous periods of operation.

These terminals combine several features to offer maximum flexibility and reliability to a consistently lower installed cost. Included is an innovative pin and groove design for fast, positive terminal engagement with complete detachability, heavy duty brass construction with silver plating for high strength and excellent resistance against vibration without sacrificing any current-carrying capacity. Wide selection of available sizes for accommodating a wire range for 1/0 AWG to 777 MCM. Ability to accept multiple conductors of various types: stranded, solid or combinations of both, and an extended bell-mouth cable entry for small and medium cable sizes that permits easy insertion of leads and gives added support for the terminated lead.

For ease and speed of application at the lowest installed cost, all AMPOWER quick disconnect terminals are terminated in the TE Connectivity (TE) hydraulic DYNA-CRIMP tools.

### Product Facts.

- Standard interface, allows terminal to mate with existing disconnects.
- Crimp style terminals marked with standard Railroad cable designations and commercial wire range.
- Pin and groove or tongue and groove design for fast positive terminal engagement with complete detachability.
- Silver-plated quick disconnect terminals withstand higher temperatures and offer greater conductivity corrosion protection.
- Crimp with standard TE hydraulic power units, heads and die sets.



Style A



Style B

# AMPOWER QUICK DISCONNECT

Terminals for Traction motor and car body leads

Style	Wire Size		Max inside diameter	Part Number	Hydraulic Power Unit 69120-1	
	Commercial	Railroad			Head No.	Die Set No.
A	1/0	275/24	0.656 (16.66)	52594-2*	See instruction sheet. 408-2292-3 & 408-2614	
A	2/0	325/24	0.705 (17.91)	52595-1*		
A	3/0	450/24	0.812 (20.62)	52596-1*		
A	4/0	551/24	0.812 (20.62)	53631-1*		
A	250 MCM	650/24	1.060 (26.92)	53446-1		
A	350 MCM	925/24	1.240 (31.50)	53447-1		
B	400 MCM	1100/24	0.906 (23.01)	53434-1		
B	500 MCM	1325/24	1.005 (25.52)	53435-1		
B	600 MCM	1600/24	1.093 (27.76)	606713-1		
B	777 MCM	1924/24	1.210 (31.20)	1986727-2		

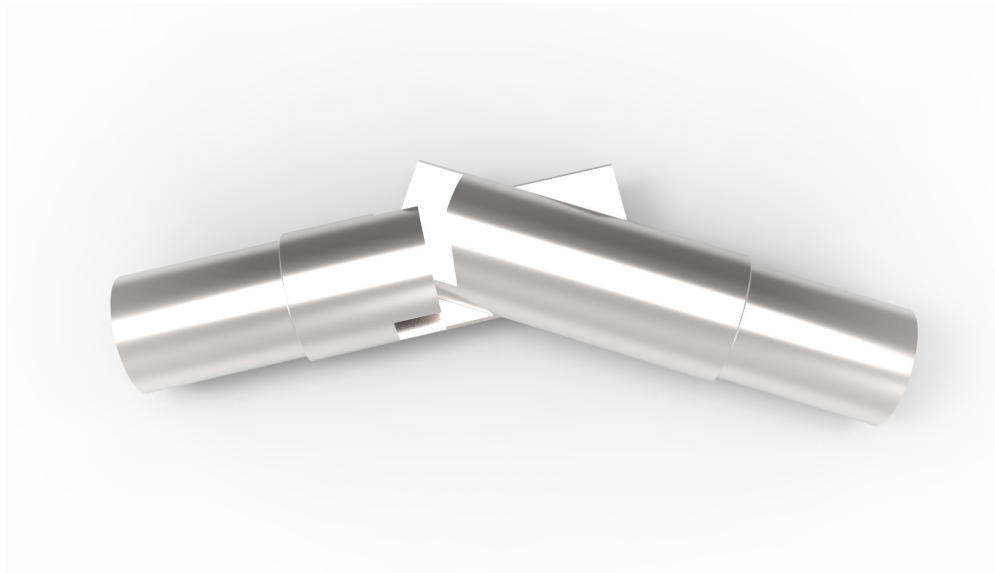
Dimensions: inch (mm)  
\*With sight hole

## Spare Part

Disconnect pin: 53853-2

Product specification: 108-13014

Instruction sheet: 408-2292-3 / 408-2614



© 2017 TE Connectivity. All Rights Reserved.

TE Connectivity AMPOWER, DYNA-CRIMP, TE, and TE connectivity (logo) are trademarks of the TE Connectivity Ltd. family of companies. Other Product and/or company names referred to herein might be trademarks of their respective owners. While TE has made every reasonable effort to ensure the accuracy of the information in this brochure, TE does not guarantee that it is error-free, nor does TE make any other representation, warranty or guarantee that the information is accurate, correct, reliable or current. TE reserves the right to make any adjustments to the information contained herein at any time without notice. TE expressly disclaims all implied warranties regarding the information contained herein, including, but not limited to, any implied warranties of merchantability or fitness for a particular purpose. The dimensions in this catalog are for reference purposes only and are subject to change without notice. Specifications are subject to change without notice. Consult TE for the latest dimensions and design specifications.