

DEUTSCH SOLID CONTACTS FOR COPPER CABLES

INDUSTRY STANDARD CONTACTS

HARSH ENVIRONMENT SOLID CONTACTS

- // EN3155 certified
- // Standard Temperature Rating to 200°C
- // Jet Engine Applications to 260°C (ESC)
- // 1400 Solid Contact Part Selection Range
- // Signal/Power/Thermocouple/Data

CONTENTS

Signal and Power Contacts	06
DMC-M Series Contacts and Tooling / EN4165	06
DTS Series Contacts and Tooling / MIL-DTL-38999 III / EN3645	08
DTS-K/DTS-S Series Contacts and Tooling / MIL-DTL-38999 III Classes K and S / EN3645 class K	10
FAST Series Contacts and Tooling / EN3545	12
FDBA/AFD/DFE Series Contacts and Tooling / EN3646 / MIL-DTL-26482	14
TJ/FMJ Series Contacts and Tooling	16
983 (200 °C) Series Contacts and Tooling / EN2997 (200 °C)	18
983 (260 °C) Series Contacts and Tooling / EN2997 (260 °C) / ESC10	22
991/992 Series Contacts and Tooling	24
DBAS/DBAD Series Contacts and Tooling	26
DFA/910 Series Contacts and Tooling	28
951/DVG Series Contacts and Tooling / VG 95328	30
DS/DCI/901/941 Series Contacts and Tooling	32
UR/RE/RM/RSM/RTK Series Contacts and Tooling	34
904/944/DRA/DPM Series Contacts and Tooling	34
902/942 Series Contacts and Tooling	36
Databus Contacts	38
All Contacts References	48
Other TE contacts brochures	51



HARSH ENVIRONMENT APPLICATIONS

- High Temperature Ratings: Standard 200°C / Jet Engine to 260°C
- NRG Band contacts with upgraded vibration resistance for jet engines

INDUSTRIALISATION

- Certified production process (EN9001 and EN9100)
- Strategic manufacturing locations in 2 geographical areas for worldwide distribution

RELIABILITY

- EN3155 certification
- Customer Qualified Part Lists (QPL)

WIDE OFFERING

- More than 1400 references (standard and specific)

TE Connectivity (TE) offers a complete range of solid contacts integrated into most of TE's DEUTSCH connectors currently available on aerospace, defense, and marine markets.

These contacts are designed for standard applications up to 200°C, but also to help withstand higher temperatures and higher vibration constraints up to 260°C for engine applications.

According to markets, and customer needs, our contacts can be qualified to the EN3155 standard or to specific customer standards such as ESC or ABS qualifications. In order to know the latest qualification status of our contacts, please consult us.

The EN3155 standards mentioned in this catalog are subject to normative evolutions.

Main contact families are :

SIGNAL CRIMP CONTACTS

- **AWG #24 to 12**

THERMOCOUPLE CONTACTS

- **AWG #22 to 12**

POWER CRIMP CONTACTS

- **AWG #10 to 0**

ACCESSORIES

- **Crimp tool**
- **Positioner**
- **Insertion/Extraction tool**
- **Sealing plugs**
- **Dummy contacts**

DATA CONTACTS

- **Coax**
- **Triax**
- **Quadrx**
- **Twinax**

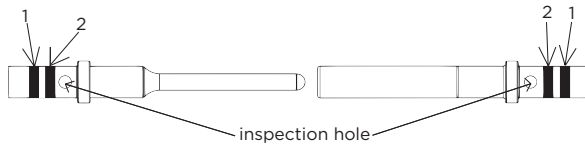
EN3155 color coding

Band 1 defines the conductor section, and band 2 defines the active area size.

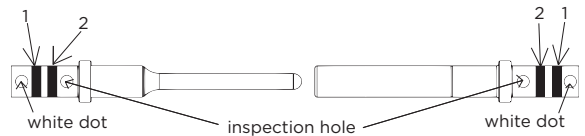
If the conductor section and the active area have the same size, then the contact can be identified by a single color band.

Contacts references containing an "A" suffix indicate a "selective gold plating" for temperatures up to 200°C (i.e.006-0937-20 A).

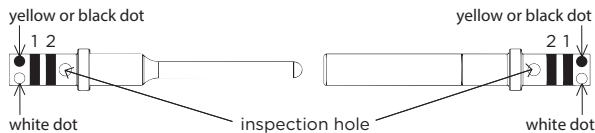
Color Coding
Pin and Socket: EN3155 (200°C)



Color Coding
Pin and Socket: EN3155 (260°C)



Color Coding
Pin and Socket: EN3155 (Thermocouple)



Contact material :

By default our contacts are manufactured in copper alloy.

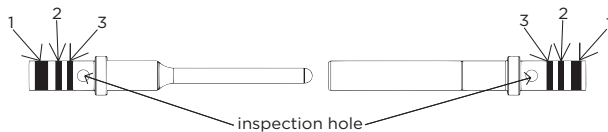
Type K Contacts are defined as below :

Kp = 90% nickel and 10% chromium ;

Kn = 95 % nickel, 2% aluminium and 3 % others

Size	24	23	22	20	16	12	10	8	4	0		
Band 1	black	purple	green	red	blue	yellow	white	red	blue	yellow		
AWG	26-30	24-28	22-26	22-28	20-24	18-22	18-24	16-20	14-18	14-20	12-14	10-12
Band 2	white	grey	green	black	red	purple	brown	blue	orange	white	yellow	brown

Color Coding
Pin and Socket Contacts : AS39029

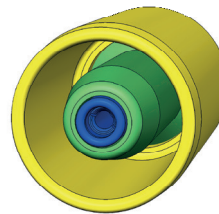


- 0 black
- 1 brown
- 2 red
- 3 orange
- 4 yellow
- 5 green
- 6 blue
- 7 purple
- 8 grey
- 9 white

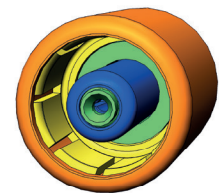
M39029/XX-XXX : the three last figures indicate the colors of the contact - example : M39029/57-354
354 = orange-green-yellow

Data Contacts

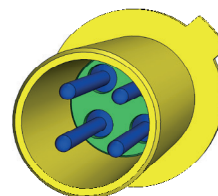
Coax



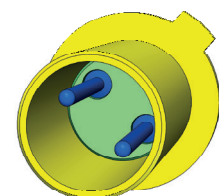
Triax



Quadrax



Twinax



Band 1 is two times wider than the two other bands.

AS39029 contacts don't have enlarged or reduced barrel

Signal and Power Contacts

DMC-M Series Contacts EN4165

Active area / Mating Size	Part No.	Former Syst. Part No.	MIL Ref.	EN Ref.	Type	Color Bands		Marking yellow or black	Contact Material	Barrel
						AS39029	EN3155			
24	724-0001-24	-	-	-	P	-	-	-	-	standard
	724-0003-24	-	-	-	S	-	-	-	-	standard
23	182-4043-23	-	-	-	P	-	Green-Purple	-	-	standard
	182-4042-23	-	-	-	S	-	-	-	-	standard
22	724-0001-22	-	M39029/58-360	-	P	Orange-Blue-Black	-	-	-	standard
	724-0003-22	-	M39029/57-354	-	S	Orange-Green-Yellow	-	-	-	standard
22	182-0860-22*	-	-	EN3155-070M2220	P	-	Red-Green	-	-	enlarged
	182-0862-22*	-	-	EN3155-071F2220	S	-	-	-	-	enlarged
22 (Shunt)	724-1272-22	-	-	EN3155-082F2222	S	-	-	-	-	standard
20	724-0001-20	-	M39029/58-363	-	P	Orange-Blue-Orange	-	-	-	standard
	724-0003-20	-	M39029/57-357	-	S	Orange-Green-Purple	-	-	-	standard
20	724-1063-20	-	-	-	P	-	Brown-Red	-	-	enlarged
	724-1064-20	-	-	-	S	-	-	-	-	enlarged
16	724-0001-16	-	M39029/58-364	-	P	Orange-Blue-Yellow	-	-	-	standard
	724-0003-16	-	M39029/57-358	-	S	Orange-Green-Grey	-	-	-	standard
16	724-1063-16	-	-	-	P	-	White-Blue	-	-	enlarged
	724-1064-16	-	-	-	S	-	-	-	-	enlarged
12	724-0001-12	-	M39029/58-365	-	P	Orange-Blue-Green	-	-	-	standard
	724-0003-12	-	M39029/57-359	-	S	Orange-Green-White	-	-	-	standard
12	724-1063-12	-	-	-	P	-	White-Yellow	-	-	enlarged
	724-1064-12	-	-	-	S	-	-	-	-	enlarged
08 (Power)	724-0001-08	-	-	-	P	-	-	-	-	standard
	724-0003-08	-	-	-	S	-	-	-	-	standard
08 (Power)	182-0001-08	-	-	-	P	-	-	-	-	standard
	182-0003-08	-	-	-	S	-	-	-	-	standard
08 (Power)	182-0393-08	-	-	-	P	-	-	-	-	reduced
	182-0394-08	-	-	-	S	-	-	-	-	reduced

* flange diameter 1.8

Signal and Power Contacts

DMC-M Series Contacts - Tooling EN4165

Wire Range		Sealing plug	Crimp Tool		Positioner		Insertion/Extraction Tool
AWG	mm ²	Ref.	Part No.	MIL Part No.	Part No.	MIL Part No.	
24-26	0.15 - 0.25	600300-24 (black)	057-0463-12	M22520/2-01	057-1030-02 057-1030-01	-	605837-ZZ
22-26	0.15 - 0.40	028-0102-22 (yellow)	057-0463-12	M22520/2-01	057-0467-32 057-0515-32	M22520/2-09 M22520/2-06	M81969/14-01 057-0286-22
22-26	0.15 - 0.40	028-0102-22 (yellow)	057-0463-12	M22520/2-01	057-0467-32 057-0515-32	M22520/2-09 M22520/2-06	M81969/14-01 057-0286-22
20-24	0.25 - 0.60	028-0108-22 (yellow)	057-0463-12	M22520/2-01	057-0467-32 057-0515-32	M22520/2-09 M22520/2-06	M81969/14-01 057-0286-22
22-26	0.15 - 0.40	028-0108-22 (yellow)	057-0463-12	M22520/2-01	057-0515-32	M22520/2-06	M81969/14-01 057-0286-22
20-24	0.25 - 0.60	006-0893-20 (red)	057-0461-11	M22520/1-01	057-0466-21	M22520/1-04	M81969/14-10
18-24	0.25 - 1.00	006-0893-20 (red)	057-0461-11	M22520/1-01	057-0466-21	M22520/1-04	M81969/14-10
16-20	0.60 - 1.20	006-0893-16 (blue)	057-0461-11	M22520/1-01	057-0466-21	M22520/1-04	M81969/14-03
14-20	0.60 - 2.00	006-0893-16 (blue)	057-0461-11	M22520/1-01	057-0466-21	M22520/1-04	M81969/14-03
12-14	2.00 - 3.00	006-0892-12 (yellow)	057-0461-11	M22520/1-01	057-0466-21	M22520/1-04	M81969/14-04
10-12	3.00 - 5.00	006-0892-12 (yellow)	057-0461-11	M22520/1-01	057-0466-21	M22520/1-04	-
8	8.98	-	057-0540-10	M300BT	057-0065-05 A	SP593	M81969/14-06 057-0286-08
8	8.98	-	057-0540-10	M300BT	057-0065-05 A	SP593	M81969/14-06 057-0286-08
10	5	-	057-0540-10	M300BT	057-0065-05 A	SP593	M81969/14-06 057-0286-08

Signal and Power Contacts

DTS-K/DTS-S Series Contacts
MIL-DTL-38999 III / EN3645

Active area / Mating Size	Part No.	Former Syst. Part No.	MIL Ref.	EN Ref.	Type	Color Bands		Marking yellow or black	Contact Material	Barrel
						AS39029	EN3155			
22	724-0001-22	-	M39029/58-360	-	P	Orange-Blue-Black	-	-	-	standard
	724-0007-22	-	M39029/56-348	-	S	Orange-Yellow-Grey	-	-	-	standard
22	182-0441-22*	-	M39029/107-620	-	P	Blue-Red-Black	-	-	-	standard
	182-0447-22*	-	M39029/106-614	-	S	Blue-Brown-Yellow	-	-	-	standard
20	724-0001-20	-	M39029/58-363	-	P	Orange-Blue-Orange	-	-	-	standard
	724-0007-20	-	M39029/56-351	-	S	Orange-Green-Brown	-	-	-	standard
20	724-1105-20	-	-	-	P	-	Green-Red	-	-	reduced
	724-1106-20	-	-	-	S	-	Green-Red	-	-	reduced
20	182-0068-20	-	-	-	P	-	Red-Red	Black	Kn	standard
	182-0009-20	-	-	-	S	Yellow-Grey-Purple	-	-	-	standard
20	182-0069-20	-	-	-	P	-	Red-Red	Yellow	Kp	standard
	182-0010-20	-	-	-	S	Yellow-Grey-Grey	-	-	-	standard
20	182-0441-20*	-	M39029/107-621	-	P	Blue-Red-Brown	-	-	-	standard
	182-0447-20*	-	M39029/106-615	-	S	Blue-Brown-Green	-	-	-	standard
16	724-0001-16	-	M39029/58-364	-	P	Orange-Blue-Yellow	-	-	-	standard
	724-0007-16	-	M39029/56-352	-	S	Orange-Green-Red	-	-	-	standard
16	182-0441-16*	-	M39029/107-622	-	P	Blue-Red-Red	-	-	-	standard
	182-0447-16*	-	M39029/106-616	-	S	Blue-Brown-Blue	-	-	-	standard
12	724-0001-12	-	M39029/58-365	-	P	Orange-Blue-Green	-	-	-	standard
	724-0007-12	-	M39029/56-353	-	S	Orange-Green-Orange	-	-	-	standard
12	182-0441-12*	-	M39029/107-623	-	P	Blue-Red-Orange	-	-	-	standard
	182-0447-12*	-	M39029/106-617	-	S	Blue-Brown-Purple	-	-	-	standard
8	182-0001-08	-	-	-	P	-	-	-	-	standard
	182-0003-08	-	-	-	S	-	-	-	-	standard
8	724-0001-08	-	-	-	P	-	-	-	-	standard
	724-0003-08	-	-	-	S	-	-	-	-	standard

* 1500 cycles

Signal and Power Contacts

DTS-K/DTS-S Series Contacts - Tooling
MIL-DTL-38999 III / EN3645

Wire Range		Sealing plug	Crimp Tool		Positioner		Insertion/Extraction Tool
AWG	mm ²	Ref.	Part No.	MIL Part No.	Part No.	MIL Part No.	
22-26	0.15 - 0.4	028-0102-22 (yellow)	057-0463-12	M22520/2-01	057-0467-32	M22520/2-09	M81969/14-01 057-0286-22
					057-0468-32	M22520/2-07	
22-26	0.15 - 0.4	028-0102-22 (yellow)	057-0463-12	M22520/2-01	057-0467-32	M22520/2-09	M81969/14-01 057-0286-22
					057-0468-32	M22520/2-07	
20-24	0.25 - 0.6	006-0893-20 (red)	057-0461-11	M22520/1-01	057-0466-21	M22520/1-04	M15570-20 006-0902-20
26-30	0.055 - 0.15	006-0893-20 (red)	057-0463-12	M22520/2-01	057-0464-32	M22520/2-02	M15570-20 006-0902-20
20-24	0.25 - 0.6	006-0893-20 (red)	057-0461-11	M22520/1-01	057-0466-21	M22520/1-04	M15570-20 006-0902-20
20-24	0.25 - 0.6	006-0893-20 (red)	057-0461-11	M22520/1-01	057-0466-21	M22520/1-04	M15570-20 006-0902-20
20-24	0.25 - 0.6	006-0893-20 (red)	057-0461-11	M22520/1-01	057-0466-21	M22520/1-04	M15570-20 006-0902-20
16-20	0.60 - 1.2	006-0893-16 (blue)	057-0461-11	M22520/1-01	057-0466-21	M22520/1-04	M15570-16 006-0902-16
16-20	0.60 - 1.2	006-0893-16 (blue)	057-0461-11	M22520/1-01	057-0466-21	M22520/1-04	M15570-16 006-0902-16
12-14	2 - 3	006-0892-12 (yellow)	057-0461-11	M22520/1-01	057-0466-21	M22520/1-04	M15570-12 006-0902-12
12-14	2 - 3	006-0892-12 (yellow)	057-0461-11	M22520/1-01	057-0466-21	M22520/1-04	M15570-12 006-0902-12
8	8.98	-	057-0540-10	M300BT	057-0065-05 A	SP593	M81969/14-06 057-0286-08
8	8.98	-	057-0540-10	M300BT	057-0065-05 A	SP593	M81969/14-06 057-0286-08

Signal and Power Contacts

DTS-K/DTS-S Series Contacts

MIL-DTL-38999 III Classes K and S / EN3645 class K

Active area / Mating Size	Part No.	Former Syst. Part No.	MIL Ref.	EN Ref.	Type	Color Bands		Marking yellow or black	Contact Material	Barrel
						AS39029	EN3155			
22	724-0001-22	-	M39029/58-360	-	P	Orange-Blue-Black	-	-	-	standard
	724-0007-22	-	M39029/56-348	-	S	Orange-Yellow-Grey	-	-	-	standard
20	724-0001-20	-	M39029/58-363	-	P	Orange-Blue-Orange	-	-	-	standard
	097-0236-20*	-	M39029/56-351	-	S	Orange-Green-Brown	-	-	-	standard
20	724-0001-20	-	M39029/58-363	-	P	Orange-Blue-Orange	-	-	-	standard
	724-0007-20	-	M39029/56-351	-	S	Orange-Green-Brown	-	-	-	standard
20	182-0068-20	-	-	-	P	-	Red-Red	Black	Kn	standard
	182-0009-20	-	-	-	S	Yellow-Grey-Purple	-	-	-	standard
20	182-0069-20	-	-	-	P	-	Red-Red	Yellow	Kp	standard
	182-0010-20	-	-	-	S	Yellow-Grey-Grey	-	-	-	standard
20	724-1063-20	-	-	-	P	-	Brown-Red	-	-	Enlarged
	724-1079-20	-	-	-	S	-	-	-	-	standard
16	724-0001-16	-	M39029/58-364	-	P	Orange-Blue-Yellow	-	-	-	standard
	097-0236-16*	-	M39029/56-352	-	S	Orange-Green-Red	-	-	-	standard
16	724-0001-16	-	M39029/58-364	-	P	Orange-Blue-Yellow	-	-	-	standard
	724-0007-16	-	M39029/56-352	-	S	Orange-Green-Red	-	-	-	standard
12	724-0001-12	-	M39029/58-365	-	P	Orange-Green-Orange	-	-	-	standard
	097-0236-12*	-	M39029/56-353	-	S	Orange-Blue-Orange	-	-	-	standard
12	724-0001-12	-	M39029/58-365	-	P	Orange-Green-Orange	-	-	-	standard
	724-0007-12	-	M39029/56-353	-	S	Orange-Blue-Orange	-	-	-	standard
08	182-0393-08	-	-	-	P	-	-	-	-	standard
	182-0394-08	-	-	-	S	-	-	-	-	standard
08	724-0001-08	-	-	-	P	-	-	-	-	standard
	724-0003-08	-	-	-	S	-	-	-	-	standard

* NRG band contacts

Signal and Power Contacts

DTS-K/DTS-S Series Contacts - Tooling
MIL-DTL-38999 III Classes K and S / EN3645 class K

Wire Range		Sealing plug	Crimp Tool		Positioner		Insertion/Extraction Tool
AWG	mm ²	Ref.	Part No.	MIL Part No.	Part No.	MIL Part No.	
22-26	0.15 - 0.4	028-0102-22 (yellow)	057-0463-12	M22520/2-01	057-0467-32	M22520/2-09	M81969/14-01 057-0286-22
					057-0468-32	M22520/2-07	
20-24	0.25 - 0.6	006-0893-20 (red)	057-0461-11	M22520/1-01	057-0466-21	M22520/1-04	M15570-20 006-0902-20
20-24	0.25 - 0.6	006-0893-20 (red)	057-0461-11	M22520/1-01	057-0466-21	M22520/1-04	M15570-20 006-0902-20
20-24	0.25 - 0.6	006-0893-20 (red)	057-0461-11	M22520/1-01	057-0466-21	M22520/1-04	M15570-20 006-0902-20
20-24	0.25 - 0.6	006-0893-20 (red)	057-0461-11	M22520/1-01	057-0466-21	M22520/1-04	M15570-20 006-0902-20
18-24	0,25-1	-	057-0461-11	M22520/1-01	057-0466-21	M22520/1-04	M81969/14-10
16-20	0.60 - 1.2	006-0893-16 (blue)	057-0461-11	M22520/1-01	057-0466-21	M22520/1-04	M15570-16 006-0902-16
16-20	0.60 - 1.2	006-0893-16 (blue)	057-0461-11	M22520/1-01	057-0466-21	M22520/1-04	M15570-16 006-0902-16
12-14	2 - 3	006-0892-12 (yellow)	057-0461-11	M22520/1-01	057-0466-21	M22520/1-04	M15570-12 006-0902-12
12-14	2 - 3	006-0892-12 (yellow)	057-0461-11	M22520/1-01	057-0466-21	M22520/1-04	M15570-12 006-0902-12
8	8,98	-	057-0540-10	M300BT	057-0065-05 A	SP593	M81969/14-06 057-0286-08
8	8,98	-	057-0540-10	M300BT	057-0065-05 A	SP593	M81969/14-06 057-0286-08

Signal and Power Contacts

FAST Series Contacts EN3545

Signal

Active area / Mating Size	Part No.	Former Syst. Part No.	MIL Ref.	EN Ref.	Type	Color Bands			Wire Range	
						AS39029	EN3155	Barrel	AWG	mm ²
22	724-0001-22	-	M39029/58-360	-	P	Orange-Blue-Black	-	standard	22-26	0.15 - 0.4
	724-0003-22	-	M39029/57-354	-	S	Orange-Green-Yellow				
20	182-0120-20	-	-	EN3155-014M2018	P	-	Brown-Red	standard	18-24	0.25 - 1
	182-0118-20	-	-	EN3155-015F2018	S	-				
16	724-0001-16	-	M39029/58-364	-	P	Orange-Blue-Yellow	-	standard	16-20	0.6 - 1.2
	724-0003-16	-	M39029/57-358	-	S	Orange-Green-Grey				
16	724-1063-16	-	-	-	P	-	White-Blue	enlarged	14-20	0.6 - 2
	724-1064-16	-	-	-	S	Yellow-Grey-Purple				

Power K6

Kit contact (contacts + sleeve)			Wire size AWG	Decomposition of the kit		Color Bands
Commercial Part No.	ABS reference	Type		Contact Part No.	Sleeve	
182-0672-06	ABS1403-1K6KZ06	P	6	182-0657-06	182-0601-06 ABS0992B03	Green-Green
182-0704-06	ABS1344-1K6LZ06	S		182-0700-06		
182-0672-08	ABS1403-1K6KZ08	P	8	182-0661-06	182-0601-08 ABS0992B01	Green-Red
182-0704-08	ABS1344-1K6LZ08	S		182-0701-06		
182-0672-10	ABS1403-1K6KZ10	P	10	182-0664-06	182-0601-10 ABS0992B02	Green-Brown
182-0704-10	ABS1403-1K6KZ10	S		182-0702-06		

Dummy contact

Active area / Mating Size	Part No.	ASNE Ref.
20	182-0899-20	ASNE0397FY2000
16	182-4114-16	ASNE0397FY1600
12	182-0899-12	ASNE0397FY1200

Signal and Power Contacts

FAST Series Contacts - Tooling EN3545

Sealing plug		Crimp Tool		Positioner		Insertion/Extraction Tool
Ref.	Part No.	MIL Part No.	Part No.	MIL Part No.		
028-0102-22 (yellow)	057-0463-12	M22520/2-01	057-0467-32	M22520/2-09	M81969/14-01 057-0286-22	
			057-0515-32	M22520/2-06		
006-0893-20 (red)	057-0463-12	M22520/2-01	057-0485-32	M22520/2-08	M81969/39-01 057-0620-60	
006-0893-16 (blue)	057-0461-11	M22520/1-01	057-0466-21	M22520/1-04	M15570-16 006-0902-16	
006-0893-16 (blue)	057-0461-11	M22520/1-01	057-0466-21	M22520/1-04	M15570-16 006-0902-16	

Sealing plug	Crimp Tool	Die Assembly	Positioner		Insertion/Extraction Tool	Filler Plug
Ref.	MIL Part No.	MIL Part No.	Part No.	MIL Part No.		
182-0601-06	M22520/23-01	M22520/23-03	182-0659-06	WA23-196L	025-0711-06	182-8004-08 A
182-0601-08	M22520/23-01	M22520/23-02	182-0659-06	WA23-196L	025-0711-06	182-8004-08 A
182-0601-10	AWG 10: M22520/23-01 AWG 12: M300BT	AWG 10: WA23-265 DA AWG 12: included in M300BT	AWG 10 : 182-0659-06	WA23-196L	025-0711-06	182-8004-08 A
			AWG 12 : TP1498	057-0860-06		

Signal and Power Contacts

FDBA/AFD/DFE Series Contacts
EN3646 / MIL-DTL-26482

Active area / Mating Size	Part No.	Former Syst. Part No.	MIL Ref.	EN Ref.	Type	Color Bands		Marking yellow or black	Contact Material	Barrel
						AS39029	EN3155			
20	006-0937-20 A-A834	-	M39029/4-110	-	P	Brown-Brown-Black		-	-	standard
	006-0912-20 A-A834	-	M39029/5-115	-	S	Brown-Brown-Green				
20	006-0937-20 A	004-0139-20	-	EN3155-018M2020	P	-		Red	-	standard
	006-0912-20 A	004-0140-20			S	-				
20	006-0044-20 A	004-0141-20	-	EN3155-018M2018	P	-		Brown-Red	-	enlarged
	006-0055-20 A	004-0142-20			S	-				
20	006-0972-20 A	0641-24-2059C	-	-	P	-		Black-Red	-	reduced
	006-0973-20 A	0603-21-2059C			S	-				
20	006-1186-20	0641-14-2001	-	-	P	-		Red-Red + white dot	Yellow	Kp
	006-1187-20	0603-16-2001			S	-				
20	006-1188-20	0641-15-2001	-	-	P	-		Red-Red + white dot	Black	Kn
	006-1189-20	0603-15-2001			S	-				
20	006-1060-20	-	-	-	P	-		-	-	Co
	006-1062-20	-			S	-				
20	025-0404-20	-	-	-	P	-		Purple-Red	Yellow	Kp
	025-0405-20	-			S	-				
20	025-0402-20	-	-	-	P	-		Purple-Red	Black	Kn
	025-0403-20	-			S	-				
20	025-0406-20	-	-	-	P	-		Purple-Red	-	Co
	025-0407-20	-			S	-				
16	006-0937-16 A	004-0139-16	-	EN3155-018M1616	P	-		Blue-Blue	-	standard
	006-0912-16 A	004-0140-16			S	-				
16	006-1102-16 A	004-0141-16	-	EN3155-018M1614	P	-		White-Blue	-	enlarged
	006-1104-16 A	004-0142-16			S	-				
16	004-0160-16 A	-	-	EN3155-018M1618	P	-		Brown-Blue	-	reduced
	004-0159-16 A	-			S	-				
16	006-1168-16 A	109026-16A	-	-	P	-		Red-Blue	-	reduced
	006-1169-16 A	109027-16A			S	-				
16	025-0870-16	-	-	-	P	-		White-Blue	-	reduced
	025-0871-16	-			S	-				
16	006-0982-16	-	-	-	P	-		Blue-Blue	Yellow	Kp
	097-0037-16	-			S	-				
16	006-0983-16	-	-	-	P	-		Blue-Blue	Black	Kn
	097-0036-16	-			S	-				
12	006-0937-12 A	004-0139-12	-	EN3155-018M1212	P	-		Yellow	-	standard
	006-0912-12 A	004-0140-12			S	-				
12	006-1157-12 A	109028 A	-	-	P	-		Blue-Yellow	-	reduced
	006-1159-12 A	109029 A			S	-				
8	005-0893-08	101333-59	-	-	P	-		-	-	standard
	005-0896-08	101334-59			S	-				
8 (87)	005-0257-08	-	-	-	P	-		Brown-Red	-	reduced
	005-0258-08	-			S	-				
8 (88)	006-0041-08	DF06A 041 08	-	-	P	-		Red	-	standard
	006-0040-08	DF06A 040 08			S	-				

Signal and Power Contacts

FDBA/AFD/DFE Series Contacts - Tooling
EN3646 / MIL-DTL-26482

Wire Range		Sealing plug	Crimp Tool		Positioner		Insertion/Extraction Tool
AWG	mm ²	Ref.	Part No.	MIL Part No.	Part No.	MIL Part No.	
20-24	0.25 - 0.6	006-0893-20 (red)	057-0461-11	M22520/1-01	057-0462-21	M22520/1-02	M15570-20 006-0902-20
20-24	0.25 - 0.6	006-0893-20 (red)	057-0461-11	M22520/1-01	057-0462-21	M22520/1-02	M15570-20 006-0902-20
18-24	0.25 - 1	006-0893-20 (red)	057-0461-11	M22520/1-01	057-0462-21	M22520/1-02	M15570-20 006-0902-20
26-30	0.055 - 0.15	006-0893-20 (red)	057-0463-12	M22520/2-01	057-0464-32	M22520/2-02	M15570-20 006-0902-20
20-24	0.25 - 0.6	006-0893-20 (red)	057-0461-11	M22520/1-01	057-0462-21	M22520/1-02	M15570-20 006-0902-20
20-24	0.25 - 0.6	006-0893-20 (red)	057-0461-11	M22520/1-01	057-0462-21	M22520/1-02	M15570-20 006-0902-20
20-24	0.25 - 0.6	006-0893-16 (blue)	057-0461-11	M22520/1-01	057-0462-21	M22520/1-02	M15570-20 006-0902-20
18-22	0.4 - 1	006-0893-20 (red)	057-0461-11	M22520/1-01	057-0462-21	M22520/1-02	M15570-20 006-0902-20
18-22	0.4 - 1	006-0893-20 (red)	057-0461-11	M22520/1-01	057-0462-21	M22520/1-02	M15570-20 006-0902-20
18-22	0.4 - 1	006-0893-20 (red)	057-0461-11	M22520/1-01	057-0462-21	M22520/1-02	M15570-20 006-0902-20
16-20	0.6 - 1.2	006-0893-16 (blue)	057-0461-11	M22520/1-01	057-0462-21	M22520/1-02	M15570-16 006-0902-16
14-18	1 - 2	006-0893-16 (blue)	057-0461-11	M22520/1-01	057-0462-21	M22520/1-02	M15570-16 006-0902-16
18-24	0.25 - 1	006-0893-16 (blue)	057-0461-11	M22520/1-01	057-0462-21	M22520/1-02	M15570-16 006-0902-16
20-24	0.25 - 0.6	006-0893-16 (blue)	057-0461-11	M22520/1-01	057-0462-21	M22520/1-02	M15570-16 006-0902-16
26-30	0.055 - 0.15	006-0893-16 (blue)	057-0463-12	M22520/2-01	057-0464-32	M22520/2-02	M15570-16 006-0902-16
16-20	0.60 - 1.2	006-0893-16 (blue)	057-0461-11	M22520/1-01	057-0462-21	M22520/1-02	M15570-16 006-0902-16
16-20	0.60 - 1.2	006-0893-16 (blue)	057-0461-11	M22520/1-01	057-0462-21	M22520/1-02	M15570-16 006-0902-16
12-16	1.2 - 3	006-0892-12 (yellow)	057-0461-11	M22520/1-01	057-0462-21	M22520/1-02	M15570-12 006-0902-12
16-20	0.6 - 1.2	006-0892-12 (yellow)	057-0461-11	M22520/1-01	057-0462-21	M22520/1-02	M15570-12 006-0902-12
8-10	5 - 8.98	006-0893-08 (green)	To be soldered				M15570-25 006-0902-08
10	5	006-0893-08 (green)	057-0486-15	M22520/5-01	057-0065-00	-	M15570-25 006-0902-08
8	8.98	006-0893-08 (green)	057-0486-15	M22520/5-01	057-0065-00	-	M15570-25 006-0902-08

Signal and Power Contacts

TJ/FMJ Series Contacts

Active area / Mating Size	Part No.	Former Syst. Part No.	EN Ref.	Type	Color Bands		Marking yellow or black	Contact Material	Barrel
					AS39029	EN3155			
22	020-0511-22	-	EN3155-016M2222	P	-	-	-	-	standard
22	019-0857-22	100060-56	-	P	-	-	-	-	standard
22	123-0001-22	-	-	P	-	-	-	-	standard
22	182-0671-22	-	-	P	-	-	-	-	standard
22	019-1055-22	-	-	P	-	-	-	-	standard
20	182-0908-20	-	EN3155-016M2020	P	-	-	-	-	standard
20	123-0001-20	-	-	P	-	-	-	-	standard
20	020-0511-20	-	EN3155-016M2018	P	-	-	-	-	enlarged
20	020-0008-20	AWG 20-24	-	P	-	-	-	-	enlarged
20	182-0439-20	-	-	P	-	-	-	-	enlarged
16	020-0511-16	-	EN3155-016M1616	P	-	-	-	-	standard
16	020-0008-16	1841-1-5616	-	P	-	-	-	-	standard
16	123-0001-16	-	-	P	-	-	-	-	standard
16	182-0439-16	182-0439-16	-	P	-	-	-	-	standard
12	020-0511-12	020-0511-12	EN3155-016M1212	P	-	-	-	-	standard
12	020-0008-12	1841-1-5612	-	P	-	-	-	-	standard
12	018-0011-12	DF 18-011-12	-	P	-	-	-	-	reduced
12	018-0865-12	DF 18-865-12-9056	-	P	-	-	-	-	reduced
12	123-0001-12	-	-	P	-	-	-	-	standard
8	020-0008-08	1841-5-5608	-	P	-	-	-	-	standard
8	018-0007-08	DF 18-007-08-9056	-	P	-	-	-	-	reduced
8	018-0878-08	DF 18-878-08	-	P	-	-	-	-	reduced
8	018-0008-08	DF 18-008-08-9056	-	P	-	-	-	-	reduced

Signal and Power Contacts

TJ/FMJ Series Contacts - Tooling

Wire Range		Sealing plug	Crimp Tool		Positioner		Insertion/Extraction Tool
AWG	mm ²	Ref.	Part No.	MIL Part No.	Part No.	MIL Part No.	
22-26	0.15 - 0.4	028-0102-22 (yellow)	057-0463-12	M22520/2-01	057-0470-32	K127-2	M15570-22-1 028-0114-22
22-26	0.15 - 0.4	028-0102-22 (yellow)	057-0463-12	M22520/2-01	057-0470-32	K127-2	M15570-22-1 028-0114-22
22-26	0.15 - 0.4	028-0102-22 (yellow)	057-0463-12	M22520/2-01	057-0470-32	K127-2	M15570-22-1 028-0114-22
22-26	0.15 - 0.4	028-0102-22 (yellow)	057-0463-12	M22520/2-01	057-0851-22	K127-3	M15570-22-1 028-0114-22
22-26	0.15 - 0.4	028-0102-22 (yellow)	To be soldered				M15570-22-1 028-0114-22
20-24	0.25 - 0.60	006-0893-20 (red)	057-0461-11	M22520/1-01	057-0462-21	M22520/1-02	M15570-20 006-0902-20
20-24	0.25 - 0.60	006-0893-20 (red)	057-0461-11	M22520/1-01	057-0462-21	M22520/1-02	M15570-20 006-0902-20
18-24	0.25 - 1	006-0893-20 (red)	057-0461-11	M22520/1-01	057-0462-21	M22520/1-02	M15570-20 006-0902-20
18-24	0.25 - 1	006-0893-20 (red)	057-0461-11	M22520/1-01	057-0462-21	M22520/1-02	M15570-20 006-0902-20
18-24	0.25 - 1	006-0893-20 (red)	057-0461-11	M22520/1-01	057-0462-21	M22520/1-02	M15570-20 006-0902-20
16-20	0.60 - 1.2	006-0893-16 (blue)	057-0461-11	M22520/1-01	057-0462-21	M22520/1-02	M15570-16 006-0902-16
16-18	1 - 1.2	006-0893-16 (blue)	057-0461-11	M22520/1-01	057-0462-21	M22520/1-02	M15570-16 006-0902-16
16-18	1 - 1.2	006-0893-16 (blue)	057-0461-11	M22520/1-01	057-0462-21	M22520/1-02	M15570-16 006-0902-16
16-20	0.60 - 1.2	006-0893-16 (blue)	057-0461-11	M22520/1-01	057-0462-21	M22520/1-02	M15570-16 006-0902-16
12-14	2 - 3	006-0892-12 (yellow)	057-0461-11	M22520/1-01	057-0462-21	M22520/1-02	M15570-12 006-0902-12
12-14	2 - 3	006-0892-12 (yellow)	057-0461-11	M22520/1-01	057-0462-21	M22520/1-02	M15570-12 006-0902-12
16-18	1 - 1.2	006-0892-12 (yellow)	057-0461-11	M22520/1-01	057-0462-21	M22520/1-02	M15570-12 006-0902-12
20-24	0.25 - 0.60	006-0892-12 (yellow)	057-0461-11	M22520/1-01	057-0462-21	M22520/1-02	M15570-12 006-0902-12
12-14	2 - 3	006-0892-12 (yellow)	057-0461-11	M22520/1-01	057-0462-21	M22520/1-02	M15570-12 006-0902-12
8	8.98	006-0893-08 (green)	057-0540-10	M300BT	057-0542-30	SP708	Manual/020-0011-08
10	5	006-0893-08 (green)	057-0540-10	M300BT	057-0542-30	SP708	Manual/020-0011-08
12-14	2 - 3	006-0893-08 (green)	057-0461-11	M22520/1-01	057-0462-21	M22520/1-02	Manual/020-0011-08
16-18	1 - 1.2	006-0893-08 (green)	057-0461-11	M22520/1-01	057-0503-21	TH18	Manual/020-0011-08

Signal and Power Contacts

983 (200 °C) Series Contacts
EN2997 (200 °C)

Signal

Active area / Mating Size	Part No.	Former Syst. Part No.	MIL Ref.	EN Ref.	Type	Color Bands		Marking yellow or black	Contact Material	Barrel
						AS39029	EN3155			
22	097-0287-22	-	-	-	P	-	Green	-	-	standard
	097-0288-22	-	-	-	S	-				
20	006-0937-20 A	004-0139-20	-	EN3155-018M2020	P	-	Red	-	-	standard
	006-0912-20 A	004-0140-20	-	EN3155-019F2020	S	-				
20	006-0044-20 A	004-0141-20	-	EN3155-018M2018	P	-	Brown-Red	-	-	enlarged
	006-0055-20 A	004-0142-20	-	EN3155-018F2018	S	-				
20	006-0972-20 A	0641-24-2059C	-	-	P	-	Black-Red	-	-	reduced
	006-0973-20 A	0603-21-2059C	-	-	S	-				
20	006-1186-20	0641-14-2001	-	-	P	-	Red-Red + white dot	Yellow	Kp	standard
	006-1187-20	0603-16-2001	-	-	S	-				
20	006-1188-20	0641-15-2001	-	-	P	-	Red-Red + white dot	Black	Kn	standard
	006-1189-20	0603-15-2001	-	-	S	-				
20	025-0404-20	-	-	-	P	-	Purple-Red	Yellow	Kp	enlarged
	025-0405-20	-	-	-	S	-	Purple-Red	-		
20	025-0402-20	-	-	-	P	-	Purple-Red	Black	Kn	enlarged
	025-0403-20	-	-	-	S	-	Purple-Red	-		
16	006-0937-16 A	004-0139-16	-	EN3155-018M1616	P	-	Blue-Blue	-	-	standard
	006-0912-16 A	004-0140-16	-	EN3155-019F1616	S	-				
16	006-1102-16 A	004-0141-16	-	EN3155-018M1614	P	-	White-Blue	-	-	enlarged
	006-1104-16 A	004-0142-16	-	EN3155-019F1614	S	-				
16	004-0160-16 A	-	-	EN3155-018M1618	P	-	Brown-Blue	-	-	reduced
	004-0159-16 A	-	-	EN3155-019F1618	S	-				
16	006-1168-16 A	109026-16A	-	-	P	-	Red-Blue	-	-	reduced
	006-1169-16 A	109027-16A	-	-	S	-				
16	025-0870-16	-	-	-	P	-	White-Blue	-	-	reduced
	025-0871-16	-	-	-	S	-				
16	006-0982-16	-	-	-	P	-	Blue-Blue	Yellow	Kp	-
	097-0037-16	-	-	-	S	-				
16	006-0983-16	-	-	-	P	-	Blue-Blue	Black	Kn	-
	097-0036-16	-	-	-	S	-				
12	006-0937-12 A	004-0139-12	-	EN3155-018M1212	P	-	Yellow	-	-	standard
	006-0912-12 A	004-0140-12	-	EN3155-019F1212	S	-				
12	006-1157-12 A	109028A	-	-	P	-	Blue-Yellow	-	-	reduced
	006-1159-12 A	109029A	-	-	S	-				

Signal and Power Contacts

983 (200 °C) Series Contacts - Tooling
EN2997 (200 °C)

Wire Range		Sealing plug	Crimp Tool		Positioner		Insertion/ Extraction Tool
AWG	mm ²	Ref.	Part No.	MIL Part No.	Part No.	MIL Part No.	
22-26	0.15 - 0.4	097-0298-22 (black)	057-0463-12	M22520/2-01	-	M22520/2-23	M81969/14-01 057-0286-22
20-24	0.25 - 0.6	006-0893-20 (red)	057-0461-11	M22520/1-01	057-0462-21	M22520/1-02	M15570-20 006-0902-20
18-24	0.25 - 1	006-0893-20 (red)	057-0461-11	M22520/1-01	057-0462-21	M22520/1-02	M15570-20 006-0902-20
26-30	0.055 - 0.15	006-0893-20 (red)	057-0463-12	M22520/2-01	057-0464-32	M22520/2-02	M15570-20 006-0902-20
20-24	0.25 - 0.6	006-0893-20 (red)	057-0461-11	M22520/1-01	057-0462-21	M22520/1-02	M15570-20 006-0902-20
20-24	0.25 - 0.6	006-0893-20 (red)	057-0461-11	M22520/1-01	057-0462-21	M22520/1-02	M15570-20 006-0902-20
18-22	0.4 - 1	006-0893-20 (red)	057-0461-11	M22520/1-01	057-0462-21	M22520/1-02	M15570-20 006-0902-20
18-22	0.4 - 1	006-0893-20 (red)	057-0461-11	M22520/1-01	057-0462-21	M22520/1-02	M15570-20 006-0902-20
16-20	0.6 - 1.2	006-0893-16 (blue)	057-0461-11	M22520/1-01	057-0462-21	M22520/1-02	M15570-16 006-0902-16
14-18	1 - 2	006-0893-16 (blue)	057-0461-11	M22520/1-01	057-0462-21	M22520/1-02	M15570-16 006-0902-16
18-24	0.25 - 1	006-0893-16 (blue)	057-0461-11	M22520/1-01	057-0462-21	M22520/1-02	M15570-16 006-0902-16
20-24	0.25 - 0.6	006-0893-16 (blue)	057-0461-11	M22520/1-01	057-0462-21	M22520/1-02	M15570-16 006-0902-16
26-30	0.055 - 0.15	006-0893-16 (blue)	057-0463-12	M22520/2-01	057-0464-32	M22520/2-02	M15570-16 006-0902-16
16-20	0.60 - 1.2	006-0893-16 (blue)	057-0461-11	M22520/1-01	057-0462-21	M22520/1-02	M15570-16 006-0902-16
16-20	0.60 - 1.2	006-0893-16 (blue)	057-0461-11	M22520/1-01	057-0462-21	M22520/1-02	M15570-16 006-0902-16
12-16	1.2 - 3	006-0892-12 (yellow)	057-0461-11	M22520/1-01	057-0462-21	M22520/1-02	M15570-12 006-0902-12
16-20	0.6 - 1.2	006-0892-12 (yellow)	057-0461-11	M22520/1-01	057-0462-21	M22520/1-02	M15570-12 006-0902-12

Signal and Power Contacts

983 (200 °C) Series Contacts
EN2997 (200 °C)

Power K6

Kit contact (contacts + sleeve)			Decomposition of the kit		Color Bands
Commercial Part No.	Type	Wire size AWG	Contact Part No.	Sleeve	
182-0672-06 A	P	6	182-0657-06 A	182-0601-06 ABS0992B03	Green-Green
182-0704-06	S		182-0700-06		
182-0672-08 A	P	8	182-0661-06 A	182-0601-08 ABS0992B01	Green-Red
182-0704-08	S		182-0701-06		
182-0672-10 A	P	10	182-0664-06 A	182-0601-10 ABS0992B02	Green-Brown
182-0704-10	S		182-0702-06		

Signal and Power Contacts

983 (200 °C) Series Contacts - Tooling
 EN2997 (200 °C)

Tools			Extraction tool	Sealing plug K6
Crimp Tool	Die assembly	Positioner		
M22520/23-01	M22520/23-03	WA23-196L 182-0659-06	025-0711-06	182-8004-08 A
M22520/23-01	M22520/23-02	WA23-196L 182-0659-06	025-0711-06	182-8004-08 A
AWG 10: M22520/23-01 AWG 12: M300BT	AWG 10: WA23-265 DA AWG 12: included in M300BT	AWG 10: WA23-296L / 182-0659-06 AWG 12: TP1498 / 057-0860-06	025-0711-06	182-8004-08 A

Signal and Power Contacts

983 (260 °C) Series Contacts
EN2997 (260 °C) / ESC10

Active area / Mating Size	Part No.	Former Syst. Part No.	MIL Ref.	EN Ref.	Type	Color Bands		Marking yellow or black	Contact Material	Barrel
						AS39029	EN3155			
20	097-0015-20	45045A	-	EN3155-004M2020	P	-	Red-Red White dot	-	-	standard
	097-0016-20	45109A	-	EN3155-005F2020	S	-				
20	097-0047-20	47815 A	-	-	P	-	Green-Red White dot	-	-	reduced
	097-0053-20	47816 A	-	-	S	-				
20	006-1186-20	0641-14-2001	-	-	P	-	Red-Red White dot	Yellow	Kp	standard
	006-1187-20	0603-16-2001	-	-	S	-				
20	006-1188-20	0641-15-2001	-	-	P	-	Red-Red White dot	Black	Kn	standard
	006-1189-20	0603-15-2001	-	-	S	-				
20	025-0402-20	-	-	-	P	-	Purple-Red	Black	Kn	enlarged
	025-0403-20	-	-	-	S	-				
20	025-0404-20	-	-	-	P	-	Purple-Red	Yellow	Kp	enlarged
	025-0405-20	-	-	-	S	-				
16	097-0014-16	-	-	EN3155-004M1616	P	-	Blue-Blue White dot	-	-	standard
	097-0013-16	-	-	EN3155-005F1616	S	-				
16	097-0177-16	-	-	EN3155-004M1614	P	-	Blue-Blue White dot	-	-	enlarged
	097-0178-16	-	-	EN3155-005F1614	S	-				
16	006-0982-16	-	-	-	P	-	Blue-Blue	Yellow	Kp	standard
	097-0037-16	-	-	-	S	-		-		
16	006-0983-16	097-0173-16	-	-	P	-	Blue-Blue	Black	Kn	standard
	097-0036-16	097-0175-16	-	-	S	-		-		
12	097-0165-12	-	-	EN3155-004M1212	P	-	Yellow White dot	-	-	standard
	097-0166-12	-	-	EN3155-005F1212	S	-				

For Power K6, please refer to "Power K6" section on page 12

Signal and Power Contacts

983 (260 °C) Series Contacts - Tooling
EN2997 (260 °C) / ESC10

Wire Range		Sealing plug	Crimp Tool		Positioner		Insertion/ Extraction Tool
AWG	mm ²	Ref.	Part No.	MIL Part No.	Part No.	MIL Part No.	
20-24	0.25 - 0.60	097-0140-20 (red)	057-0461-11	M22520/1-01	057-0462-21	M22520/1-02	M15570-20 006-0902-20
22-26	0.15 - 0.4	097-0140-20 (red)	057-0461-11	M22520/1-01	057-0462-21	M22520/1-02	M15570-20 006-0902-20
20-24	0.25 - 0.60	097-0140-20 (red)	057-0461-11	M22520/1-01	057-0462-21	M22520/1-02	M15570-20 006-0902-20
20-24	0.25 - 0.60	097-0140-20 (red)	057-0461-11	M22520/1-01	057-0462-21	M22520/1-02	M15570-20 006-0902-20
18-22	0.4 - 1	097-0140-20 (red)	057-0461-11	M22520/1-01	057-0462-21	M22520/1-02	M15570-20 006-0902-20
18-22	0.4 - 1	097-0140-20 (red)	057-0461-11	M22520/1-01	057-0462-21	M22520/1-02	M15570-20 006-0902-20
16-20	0.60 - 1.2	097-0139-16 (blue)	057-0461-11	M22520/1-01	057-0462-21	M22520/1-02	M15570-16 006-0902-16
14-18	1 - 2	097-0139-16 (blue)	057-0461-11	M22520/1-01	057-0462-21	M22520/1-02	M15570-16 006-0902-16
16-20	0.60 - 1.2	097-0139-16 (blue)	057-0461-11	M22520/1-01	057-0462-21	M22520/1-02	M15570-16 006-0902-16
16-20	0.60 - 1.2	097-0139-16 (blue)	057-0461-11	M22520/1-01	057-0462-21	M22520/1-02	M15570-16 006-0902-16
12-14	2 - 3	097-0138-12 (yellow)	057-0461-11	M22520/1-01	057-0462-21	M22520/1-02	M15570-12 006-0902-12

Signal and Power Contacts

991/992 Series Contacts

Active area / Mating Size	Part No.	Former Syst. Part No.	MIL Ref.	EN Ref.	Type	Color Bands		Marking yellow or black	Contact Material	Barrel	
						AS39029	EN3155				
16	097-0006-16	60530A	-	-	P	Red-Brown-Red		-	-	-	standard
	097-0010-16	60531A			S	Red-Brown-Purple					
	097-0004-16	60534A			S	Red-Brown-Grey					
16	097-0007-16	60536A	-	-	P	-	Blue	-	-	-	standard
	097-0011-16	65906A			S						
	097-0005-16	65908A			S						
16	097-0034-16	65184A	-	-	P	-	Red-Blue	-	-	-	reduced
	097-0033-16	65185A			S						
	097-0032-16	65186A			S						
16	097-0091-16	66124A	-	-	P	-	Red-Blue	-	9A	-	reduced
	097-0093-16	66125A			S			-			
	097-0096-16	66127A			S			Black			
16	097-0092-16	66129A	-	-	P	-	Red-Blue	-	9C	-	reduced
	097-0097-16	66130A			S			Yellow			
	097-0095-16	66132A			S			-			
16	097-0027-16	61989A	-	-	P	-	Blue	-	9A	-	standard
	097-0023-16	61990A			S						
	097-0025-16	61992A			S						
16	097-0028-16	61994A	-	-	P	-	Blue	-	9C	-	standard
	097-0024-16	61995A			S						
	097-0026-16	61997A			S						
12	097-0060-12	60549A	-	-	P	Red-Brown-Orange		-	-	-	standard
	097-0061-12	60550A			S	Red-Brown-White					
8	097-0184-08	60363	-	-	P	Red-Brown-Yellow		-	-	-	standard
	097-0187-08	60364			S	Red-Red-Black					
4	097-0062-04	60615	-	-	P	Red-Brown-Green		-	-	-	standard
	097-0063-04	60616			S	Red-Red-Brown					
0	097-0064-00	60619	-	-	P	Red-Brown-Blue		-	-	-	standard
	097-0065-00	60620			S	Red-Red-Red					

Signal and Power Contacts

991/992 Series Contacts - Tooling

Wire Range		Sealing plug	Crimp Tool		Positioner		Insertion/Extraction Tool
AWG	mm ²	Ref.	Part No.	MIL Part No.	Part No.	MIL Part No.	
16-20	0.60 - 1.2	-	057-0461-11	M2250/1-01	057-0462-21	M22520/1-02	M15570-16 006-0902-16
16-20	0.60 - 1.2	-	057-0461-11	M2250/1-01	057-0462-21	M22520/1-02	M15570-16 006-0902-16
20-24	0.25 - 0.60	-	057-0461-11	M2250/1-01	057-0462-21	M22520/1-02	M15570-16 006-0902-16
20-24	0.25 - 0.60	-	057-0461-11	M2250/1-01	057-0462-21	M22520/1-02	M15570-16 006-0902-16
20-24	0.25 - 0.60	-	057-0461-11	M2250/1-01	057-0462-21	M22520/1-02	M15570-16 006-0902-16
16-20	0.6 - 1.2	-	057-0461-11	M2250/1-01	057-0462-21	M22520/1-02	M15570-16 006-0902-16
16-20	0.60 - 1.2	-	057-0461-11	M2250/1-01	057-0462-21	M22520/1-02	M15570-16 006-0902-16
12-14	2 - 3	-	057-0461-11	M2250/1-01	057-0462-21	M22520/1-02	M15570-12 006-0902-12
8-10	5.30 - 8.98	-	-	M22520/23-01	-	M22520/23-02 M22520/23-09	-/M81969/14-06
4-6	14 - 22	-	-	M22520/23-01	-	M22520/23-11 M22520/23-04	-/M81969/14-07
0-2	34 - 53	-	-	M22520/23-01	-	M22520/23-05 M22520/23-13	-/M81969/14-08

Signal and Power Contacts

DBAS / DBAD Series Contacts

Active area / Mating Size	Part No.	Former Syst. Part No.	Type	Color Bands	Marking yellow or black	Contact Material	Barrel	Wire Range	
								AWG	mm ²
22	028-0108-22	-	P	Green	-	-	standard	22-26	0.15 - 0.4
	028-0113-22		S						
22	030-0076-22	-	P	White-Green specific band: white	-	-	reduced	22-30	0.055 - 0.4
	030-0044-22		S						
22	028-0131-22	-	P	Green-Green	Yellow	Kp	standard	22-26	0.15 - 0.4
	028-0139-22		S	*-Green					
22	028-0132-22	-	P	Green-Green	Black	Kn	standard	22-26	0.15 - 0.4
	028-0140-22		S	*-Green					
22	703-0162-22	-	P	*-Green	Yellow	-	reduced	26-30	0.055 - 0.15
	703-0163-22		S						
22	703-0164-22	-	P	*-Green	Black	-	reduced	26-30	0.055 - 0.15
	703-0165-22		S						
20	006-0937-20	0641-10-2059B	P	Red	-	-	standard	20-24	0.25 - 0.60
	006-0912-20	0603-34-2059B	S						
20	006-0044-20	DF 06-044-20B	P	Brown-Red	-	-	enlarged	18-24	0.25 - 1
	006-0055-20	DF 06-055-20B	S						
20	006-0972-20	0641-24-2059B	P	Black-Red	-	-	enlarged	26-30	0.055 - 0.15
	006-0973-20	0603-21-2059B	S						
20	006-1186-20	0641-14-2001	P	Red-Red White dot	Yellow	Kp	standard	20-24	0.25 - 0.60
	006-1187-20	0603-16-2001	S						
20	006-1188-20	0641-15-2001	P	Red-Red White dot	Black	Kn	standard	20-24	0.25 - 0.60
	006-1189-20	0603-15-2001	S						
20	006-1060-20	-	P	-	-	Co	standard	20-24	0.25 - 0.60
	006-1062-20		S						
20	025-0404-20	-	P	Purple-Red	Yellow	Kp	enlarged	18-22	0.4 - 1
	025-0405-20		S						
20	025-0402-20	-	P	Purple-Red	Black	Kn	enlarged	18-22	0.4 - 1
	025-0403-20		S						
20	025-0406-20	-	P	Purple-Red	-	Co	enlarged	18-22	0.4 - 1
	025-0407-20		S						
16	006-0937-16	0641-12-1659B	P	Blue	-	-	standard	16-20	0.60 - 1.2
	006-0912-16	0603-33-1659B	S						
16	006-1102-16	-	P	White-Blue specific band: white	-	-	enlarged	14-18	1 - 2
	006-1104-16		S						
16	004-0160-16	-	P	Brown-Blue	-	-	reduced	18-24	0.25 - 1
	004-0159-16		S						
16	006-1168-16	-	P	Red-Blue specific band: white	-	-	reduced	20-24	0.25 - 1
	006-1169-16		S						
16	025-0870-16	-	P	White-Blue	-	-	reduced	26-30	0.055 - 0.15
	025-0871-16		S						
12	006-0937-12	0641-32-1259B	P	Yellow	-	-	standard	12-14	2 - 3
	006-0912-12	0603-32-1259B	S						
12	006-1157-12	-	P	White-Yellow	-	-	reduced	16-20	0.60 - 1.2
	006-1159-12		S						
8	005-0893-08	101333-59	P	-	-	-	standard	8-10	5 - 8.98
	005-0896-08	101334-59	S						
8 (87)	005-0257-08	-	P	Brown-Red	-	-	reduced	10	5
	005-0258-08		S						
8 (88)	006-0041-08	-	P	Red	-	-	standard	8	8.98
	006-0040-08		S						

* No first band color

Signal and Power Contacts

DBAS / DBAD Series Contacts - Tooling

Sealing plug		Crimp Tool		Positioner		Insertion/Extraction Tool
Ref.	Part No.	MIL Part No.	Part No.	MIL Part No.		
028-0102-22 (yellow)	057-0463-12	M22520/2-01	057-0470-32	K127-2	M15570-22-1 028-0114-22	
028-0102-22 (yellow)	057-0463-12	M22520/2-01	057-0470-32	K127-2	M15570-22-1 028-0114-22	
028-0102-22 (yellow)	057-0463-12	M22520/2-01	057-0470-32	K127-2	M15570-22-1 028-0114-22	
028-0102-22 (yellow)	057-0463-12	M22520/2-01	057-0470-32	K127-2	M15570-22-1 028-0114-22	
028-0102-22 (yellow)	057-0463-12	M22520/2-01	057-0470-32	K127-2	M15570-22-1 028-0114-22	
028-0102-22 (yellow)	057-0463-12	M22520/2-01	057-0470-32	K127-2	M15570-22-1 028-0114-22	
006-0893-20 (red)	057-0461-11	M22520/1-01	057-0462-21	M22520/1-02	M15570-20 006-0902-20	
006-0893-20 (red)	057-0461-11	M22520/1-01	057-0462-21	M22520/1-02	M15570-20 006-0902-20	
006-0893-20 (red)	057-0463-12	M22520/2-01	057-0462-21	M22520/1-02	M15570-20 006-0902-20	
006-0893-20 (red)	057-0461-11	M22520/1-01	057-0462-21	M22520/1-02	M15570-20 006-0902-20	
006-0893-20 (red)	057-0461-11	M22420/1-01	057-0462-21	M22520/1-02	M15570-20 006-0902-20	
006-0893-20 (red)	057-0461-11	M22520/1-01	057-0462-21	M22520/1-02	M15570-20 006-0902-20	
006-0893-20 (red)	057-0461-11	M22520/1-01	057-0462-21	M22520/1-02	M15570-20 006-0902-20	
006-0893-20 (red)	057-0461-11	M22520/1-01	057-0462-21	M22520/1-02	M15570-20 006-0902-20	
006-0893-20 (red)	057-0461-11	M22520/1-01	057-0462-21	M22520/1-02	M15570-20 006-0902-20	
006-0893-16 (blue)	057-0461-11	M22520/1-01	057-0462-21	M22520/1-02	M15570-16 006-0902-16	
006-0893-16 (blue)	057-0461-11	M22520/1-01	057-0462-21	M22520/1-02	M15570-16 006-0902-16	
006-0893-16 (blue)	057-0461-11	M22520/1-01	057-0462-21	M22520/1-02	M15570-16 006-0902-16	
006-0893-16 (blue)	057-0461-11	M22520/1-01	057-0462-21	M22520/1-02	M15570-16 006-0902-16	
006-0893-16 (blue)	057-0461-11	M22520/1-01	057-0462-21	M22520/1-02	M15570-16 006-0902-16	
006-0893-12 (yellow)	057-0461-11	M22520/1-01	057-0462-21	M22520/1-02	M15570-12 006-0902-12	
006-0893-12 (yellow)	057-0461-11	M22520/1-01	057-0462-21	M22520/1-02	M15570-12 006-0902-12	
006-0893-08 (green)		To be soldered			M15570-25 006-0902-08	
006-0893-08 (green)	057-0486-15	M22520/5-01	057-0065-00	-	M15570-25 006-0902-08	
006-0893-08 (green)	057-0486-15	M22520/5-01	057-0065-00	-	M15570-25 006-0902-08	

Signal and Power Contacts

DFA/910 Series Contacts

Active area / Mating Size	Part No.	Former Syst. Part No.	Type	Color Bands	Marking yellow or black	Contact Material	Barrel
20	910 KP20-0	008-0001-20	P	Purple-Red	-	-	enlarged
	910 KS20-0	008-0011-20	S				
20	910 KP20 R	-	P	Grey-Red	-	-	reduced
	910 KS20 R	-	S				
20	008-0161-20	DF 08-161-20-0059B	P	White-Red	-	-	reduced
	008-0162-20	DF 08-162-20-0059B	S				
20	008-0100-20	DF 08-100-01	P	Red	Black	Kn	enlarged
	008-0101-20	DF 08-A-101-01	S		White		
20	008-0248-20	DF 08-100-02	P	Red-Red	Yellow	Kp	enlarged
	008-0208-20	DF 08-A-101-02	S				
16	910 KP16-0	DF 08-001-16	P	Blue	-	-	standard
	910 KS16-0	DF 08-A-011-16	S				
16	910 KP16 A	008-0265-16	P	Orange-Blue	-	-	enlarged
	910 KS16 A	008-0266-16	S				
16	-	-	-	-	-	-	-
	134-0068-16	-	S	Purple-Blue	-	-	reduced
16	-	-	-	-	-	-	-
	008-0253-16	P 2161	S	Red-Blue specific band: white	-	-	reduced

Signal and Power Contacts

DFA/910 Series Contacts - Tooling

Wire Range		Sealing plug	Crimp Tool		Positioner		Insertion/Extraction Tool
AWG	mm ²	Ref.	Part No.	MIL Part No.	Part No.	MIL Part No.	
18-22	0.4 - 1	910 K0-20 (red)	057-0461-11	M22520/1-01	057-0462-21	M22520/1-02	M15570-20 006-0902-20
24-28	0.10 - 0.25	910 K0-20 (red)	057-0463-12	M22520/2-01	057-0464-32	M22520/2-02	M15570-20 006-0902-20
26-30	0.055 - 0.15	910 K0-20 (red)	057-0463-12	M22520/2-01	057-0464-32	M22520/2-02	M15570-20 006-0902-20
18-24	0.25 - 1	910 K0-20 (red)			Please consult us		M15570-20 006-0902-20
18-24	0.25 - 1	910 K0-20 (red)			Please consult us		M15570-20 006-0902-20
16-20	0.6 - 1.2	910 K0-16 (blue)	057-0461-11	M22520/1-01	057-0462-21	M22520/1-02	M15570-16 006-0902-16
14-18	1 - 2	910 K0-16 (blue)	057-0461-11	M22520/1-01	057-0462-21	M22520/1-02	M15570-16 006-0902-16
18-22	0.4 - 1	910 K0-16 (blue)	057-0461-11	M22520/1-01	057-0462-21	M22520/1-02	M15570-16 006-0902-16
20-24	0.25 - 0.6	910 K0 -16 (blue)	057-0461-11	M22520/1-01	057-0462-21	M22520/1-02	M15570-16 006-0902-16

Signal and Power Contacts

951/DVG Series Contacts VG 95328

Active area / Mating Size	Part No.	Former Syst. Part No.	Type	Color Bands	Marking yellow or black	Contact Material	Barrel
20	014-1025-20	4102-19-1156	P	-	-	-	standard barrel soldered or crimped for arrangements 8-2/8-3/8-4
	014-1026-20	4102-18-1156	S				
20	014-1015-20	0004-058-000	P	-	-	-	enlarged with cup
	014-1018-20	0007-008-000B	S				
20 -	014-1014-20	0004-135-000B	P	-	-	-	enlarged without cup
	038-0015-20	0007-044-000B	S				
20	014-0091-20	DF 14-091-20	P	Red-Red	-	-	long barrel without cup
	014-0092-20	DF 14-092-20	S				
20	143-0003-20	-	P	-	-	-	standard with cup
	143-0004-20	-	S				
16	014-1014-16	0004-065-000	P	-	-	-	enlarged
	014-1016-16	0007-013-000	S				
16	143-0003-16	-	P	-	-	-	standard
	143-0004-16	-	S				
8	014-1092-08	-	P	-	-	-	standard
	014-1094-08	-	S				

Signal and Power Contacts

951/DVG Series Contacts - Tooling VG 95328

Wire Range		Sealing plug	Crimp Tool		Positioner		Insertion/Extraction Tool
AWG	mm ²	Ref.	Part No.	MIL Part No.	Part No.	MIL Part No.	
20-24	0.25 - 0.6	014-1042-20 (red)	057-0461-11	M22520/1-01	057-0462-21	M22520/1-02	057-0125-00/057-0127-00
			057-0463-12	M22520/2-01	057-0577-32	K2	
18-24	0.22 - 1	014-1042-20 (red)	057-0461-11	M22520/1-01	057-0462-21	M22520/1-02	057-0484-60/057-0476-60
18-24	0.22 - 1	014-1042-20 (red)	057-0463-12	M22520/2-01	057-0577-32	K2	057-0484-60/057-0476-60
18-24	0.22 - 1	014-1042-20 (red)	057-0461-11	M22520/1-01	057-0462-21	M22520/1-02	057-0484-60/057-0476-60
20-24	0.22 - 0.6	014-1042-20 (red)	057-0461-11	M22520/1-01	057-0462-21	M22520/1-02	057-0484-60/057-0476-60
14-18	1 - 1.91	006-0893-16 (blue)	057-0461-11	M22520/1-01	057-0462-21	M22520/1-02	057-0472-60/057-0475-60
16-18	0.93 - 1.34	006-0893-16 (blue)	057-0461-11	M22520/1-01	057-0462-21	M22520/1-02	057-0472-60/057-0475-60
8	8.98	014-1010-01 (green)	057-0540-10	M300BT	-	TP1669	-/057-0480-60

Signal and Power Contacts

DS/DCI/901/941 Series Contacts

Active area / Mating Size	Part No.	Former Syst. Part No.	Type	Color Bands		Marking yellow or black	Contact Material	Barrel
				AS39029	EN3155			
20	047-0894-20	0005-045-000B	P	-	-	-	-	standard
	047-0893-20	0007-049-000B	S	-	-	-	-	
20	047-1022-20	0005-056-000	P	-	-	-	-	reduced
	047-1023-20	0007-071-000B	S	-	-	-	-	
20	047-1024-20	0005-005-000	P	-	-	-	-	enlarged
	047-1025-20	0007-007-000B	S	-	-	-	-	
20	047-1006-20	4702-11-3901	P	-	-	-	Cu	-
	047-1059-20	4702-10-3901	S	-	-	-	-	
20	047-1007-20	4702-11-0102	P	-	-	-	Co	-
	047-1013-20	4702-10-0102	S	-	-	-	-	
20	047-1008-20	4702-11-0103	P	-	-	-	Coi (constantan fer)	-
	047-1014-20	4702-10-0103	S	-	-	-		
20	047-1009-20	4702-11-3904	P	-	-	-	Fe	-
	047-1015-20	4702-10-3904	S	-	-	-	-	
20	047-1010-20	4702-11-0105	P	-	-	-	Kp	-
	047-1016-20	4702-10-0105	S	-	-	-	-	
20	047-1011-20	4702-11-0106	P	-	-	-	Kn	-
	047-1017-20	4702-10-0106	S	-	-	-		
16	047-0894-16	800-16/32-1	P	-	-	-	-	standard
	047-0893-16	200-16/30-3	S	-	-	-	-	
16	047-1022-16	800-16/32-3	P	-	-	-	-	reduced
	047-1023-16	200-16/30-4	S	-	-	-	-	
16	047-1024-16	0005-008-000	P	-	-	-	-	enlarged
	047-1025-16	0007-014-000	S	-	-	-	-	
16	047-1348-16	-	P	-	-	-	-	enlarged
	047-1349-16	-	S	-	-	-	-	
12	047-0894-12	800-12/32-1	P	-	-	-	-	standard
	047-0893-12	200-12/30-3	S	-	-	-	-	
12	047-1022-12	800-12/32-3	P	-	-	-	-	reduced
	047-1023-12	200-12/30-4	S	-	-	-	-	
12	047-1024-12	800-12/32-7	P	-	-	-	-	reduced
	047-1025-12	200-12/30-7	S	-	-	-	-	
-	-	-	-	-	-	-	-	-
12	047-1401-12	-	S	-	-	-	-	enlarged
	-	-	-	-	-	-	-	
8	047-0894-08	0005-048-000	P	-	-	-	-	standard
	047-0893-08	0007-059-000	S	-	-	-	-	
8 (87)	047-1329-08	-	P	-	-	-	-	reduced
	047-1330-08	-	S	-	-	-	-	
8 (88)	047-1325-08	-	P	-	-	-	-	standard
	047-1326-08	-	S	-	-	-	-	

Size 0 and 4 contacts, please consult us

Signal and Power Contacts

DS/DCI/901/941 Series Contacts Tooling

Wire Range		Sealing plug	Crimp Tool		Positioner		Insertion/Extraction Tool
AWG	mm ²	Ref.	Part No.	MIL Part No.	Part No.	MIL Part No.	
18-24	0.22 - 1	006-0893-20 (red)	057-0461-11	M22520/1-01	057-0503-21	TH18	M15513-20/M15515-20 057-0473-60/057-0479-60
26-30	0.055 - 0.15	006-0893-20 (red)	057-0463-12	M22520/2-01	-	K1613 K1614	M15513-20/M15515-20 057-0473-60/057-0479-60
16-18	0.93 - 1.34	006-0893-20 (red)	057-0461-11	M22520/1-01	057-0503-21	TH18	M15513-16/M15515-20 057-0472-60/057-0479-60
18-24	0.22 - 1	006-0893-20 (red)	057-0461-11	M22520/1-01	057-0503-21	TH18	M15513-20/M15515-20 057-0473-60/057-0479-60
18-24	0.22 - 1	006-0893-20 (red)	057-0461-11	M22520/1-01	057-0503-21	TH18	M15513-20/M15515-20 057-0473-60/057-0479-60
18-24	0.22 - 1	006-0893-20 (red)	057-0461-11	M22520/1-01	057-0503-21	TH18	M15513-20/M15515-20 057-0473-60/057-0479-60
18-24	0.22 - 1	006-0893-20 (red)	057-0461-11	M22520/1-01	057-0503-21	TH18	M15513-20/M15515-20 057-0473-60/057-0479-60
18-24	0.22 - 1	006-0893-20 (red)	057-0461-11	M22520/1-01	057-0503-21	TH18	M15513-20/M15515-20 057-0473-60/057-0479-60
18-24	0.22 - 1	006-0893-20 (red)	057-0461-11	M22520/1-01	057-0503-21	TH18	M15513-20/M15515-20 057-0473-60/057-0479-60
16-18	0.93 - 1.34	092-1057-16 (blue)	057-0461-11	M22520/1-01	057-0503-21	TH18	M15513-16/M15515-16 057-0472-60/057-0478-60
18-24	0.22 - 1	092-1057-16 (blue)	057-0461-11	M22520/1-01	057-0503-21	TH18	M15513-16/M15515-16 057-0472-60/057-0478-60
12-14	1.91 - 3.18	092-1057-16 (blue)	057-0461-11	M22520/1-01	057-0503-21	TH18	M15513-16/M15515-16 057-0472-60/057-0478-60
14-16	1.34 - 1.91	092-1057-16 (blue)	057-0461-11	M22520/1-01	057-0503-21	TH18	M15513-16/M15515-16 057-0472-60/057-0478-60
12-14	1.91 - 3.18	092-1056-12 (yellow)	057-0461-11	M22520/1-01	057-0503-21	TH18	M15513-12/M15515-12 057-0471-60/057-0477-60
18-24	0.22 - 1	092-1056-12 (yellow)	057-0540-10	M300BT	057-0503-21	TH18	M15513-12/M15515-12 057-0471-60/057-0477-60
14-18	0.22 - 1	092-1056-12 (yellow)	057-0540-10	M300BT	057-0503-21	TH18	M15513-16/M15515-12 057-0472-60/057-0477-60
10-12	3.18 - 5.30	092-1056-12 (yellow)	057-0540-10	M300BT	057-0503-21	TH18	M15513-12/M15515-12 057-0471-60/057-0477-60
8	8.98	047-1052-08 (green)	-	-	-	-	M155513-25/M15515-25 057-0474-60/057-0480-60
10	5	047-1052-08 (green)	057-0585-11	-	-	-	M155513-25/M15515-25 057-0474-60/057-0480-60
8	8.98	047-1052-08 (green)	057-0585-11	-	-	-	M155513-25/M15515-25 057-0474-60/057-0480-60

Signal and Power Contacts

UR/RE/RM/RSM/RTK Series Contacts

Active area / Mating Size	Part No.	Former Syst. Part No.	Type	Color Bands	Marking yellow or black	Contact Material	Barrel
22	029-0100-22	2841-5-9000C	P	Green	-	-	standard
	029-0101-22	2803-4-0000C	S				
22	029-0102-22	DF 28-046-22C	P	White-Green	-	-	reduced
	029-0103-22	DF 28-A-047-22C	S				
22	028-0108-22	2841-5-9000D	P	Green	-	-	standard
	028-0113-22	2803-4-0000E	S				
22	030-0076-22	DF 28-046-22D	P	Green-White	-	-	reduced
	030-0044-22	DF 28-047-22E	S				
22	028-0131-22	-	P	Green	Yellow	Kp	standard
	028-0139-22	-	S	Green-Green			
22	028-0132-22	-	P	Green-Green	Black	Kn	standard
	028-0140-22	-	S	Green			
22	703-0162-22	-	P	*-Green	Yellow	-	reduced
	703-0163-22	-	S				
22	703-0164-22	-	P	*-Green	Black	-	reduced
	703-0165-22	-	S				
20	028-0108-20	103-300-31	P	Red	-	-	standard
	028-0113-20	103-304	S				
16	028-0176-16	2841-7-9016	P	Blue	-	-	standard
	028-0174-16	2803-5-0016	S				

* No first band color

904/944/DRA/DPM Series Contacts

Active area / Mating Size	Part No.	Former Syst. Part No.	Type	Color Bands	Marking yellow or black	Contact Material	Barrel
16	023-0032-16	DF 23-A-032-16	P	-	-	-	standard
	023-0025-16	DF 23-A-025-16	S				
16	023-0040-16	DF 23-A-040-16	P	-	-	-	reduced
	023-0139-16	-	S				
16	023-0151-16	-	P	-	-	-	reduced
	023-0153-16	-	S				

Signal and Power Contacts

UR/RE/RM/RSM/RTK Series Contacts - Tooling

Wire Range		Sealing plug	Crimp Tool		Positioner		Insertion/Extraction Tool
AWG	mm ²	Ref.	Part No.	MIL Part No.	Part No.	MIL Part No.	Tool
22-26	0.15 - 0.4	029-0037-22 (yellow)	057-0463-12	M22520/2-01	057-0470-32	K127-2	M15570-22-1 028-0114-22
26-30	0.055 - 0.15	029-0037-22 (yellow)	057-0463-12	M22520/2-01	057-0470-32	K127-2	M15570-22-1 028-0114-22
22-26	0.15 - 0.4	029-0037-22 (yellow)	057-0463-12	M22520/2-01	057-0470-32	K127-2	M15570-22-1 028-0114-22
26-30	0.055 - 0.15	029-0037-22 (yellow)	057-0463-12	M22520/2-01	057-0470-32	K127-2	M15570-22-1 028-0114-22
22-26	0.15 - 0.4	029-0037-22 (yellow)	057-0463-12	M22520/2-01	057-0470-32	K127-2	M15570-22-1 028-0114-22
22-26	0.15 - 0.34	029-0037-22 (yellow)	057-0463-12	M22520/2-01	057-0470-32	K127-2	M15570-22-1 028-0114-22
26-30	0.055 - 0.15	029-0037-22 (yellow)	057-0463-12	M22520/2-01	057-0470-32	K127-2	M15570-22-1 028-0114-22
26-30	0.055 - 0.15	029-0037-22 (yellow)	057-0463-12	M22520/2-01	057-0470-32	K127-2	M15570-22-1 028-0114-22
20-24	0.25 - 0.6	006-0893-20 (red)	057-0461-11	M22520/1-01	057-0462-21	M22520/1-02	M15570-20 006-0902-20
16-18	1 - 1.2	006-0893-16 (blue)	057-0461-11	M22520/1-01	057-0462-21	M22520/1-02	M15570-16 006-0902-16

904/944/DRA/DPM Series Contacts - Tooling

Wire Range		Sealing plug	Crimp Tool		Positioner		Insertion/Extraction Tool
AWG	mm ²	Ref.	Part No.	MIL Part No.	Part No.	MIL Part No.	Tool
16-18	1 - 1.2	-	057-0461-11	M22520/1-01	DF 57-023-00	-	Manual/DRK113-20
20-24	0.25 - 0.6	-	057-0461-11	M22520/1-01	DF 57-023-00	-	Manual/DRK113-20
26-30	0.055 - 0.15	-	057-0461-11	M22520/1-01	DF 57-023-00	-	Manual/DRK113-20

Signal and Power Contacts

902/942 Series Contacts

Active area / Mating Size	Part No.	Former Syst. Part No.	Type	Color Bands	Marking yellow or black	Contact Material	Barrel
20	006-0937-20 A	004-0139-20	P	Red	-	-	standard
	006-0912-20 A	004-0140-20	S				
20	006-0044-20 A	004-0141-20	P	Brown-Red	-	-	enlarged
	006-0055-20 A	004-0142-20	S				
20	006-0972-20 A	0641-24-2059C	P	Black-Red	-	-	reduced
	006-0973-20 A	0603-21-2059C	S				
20	006-1186-20	0641-14-2001	P	Red-Red + white dot	Yellow	Kp	standard
	006-1187-20	0603-16-2001	S				
20	006-1188-20	0641-15-2001	P	Red-Red + white dot	Black	Kn	standard
	006-1189-20	0603-15-2001	S				
20	006-1060-20	-	P	-	-	Co	enlarged
	006-1062-20	-	S				
20	025-0404-20	-	P	Purple-Red	Yellow	Kp	enlarged
	025-0405-20	-	S	Purple-Red	-		
20	025-0402-20	-	P	Purple-Red	Black	Kn	enlarged
	025-0403-20	-	S	Purple-Red	-		
20	025-0406-20	-	P	Purple-Red	-	Co	enlarged
	025-0407-20	-	S				
16	006-0937-16 A	004-0139-16	P	Blue-Blue	-	-	standard
	006-0912-16 A	004-0140-16	S				

Signal and Power Contacts

902/942 Series Contacts - Tooling

Wire Range		Sealing plug	Crimp Tool		Positioner		Insertion/Extraction Tool
AWG	mm ²	Ref.	Part No.	MIL Part No.	Part No.	MIL Part No.	Tool
20-24	0.25 - 0.6	006-0893-20 (red)	057-0461-11	M22520/1-01	057-0462-21	M22520/1-02	M15570-20 006-0902-20
18-24	0.25 - 1	006-0893-20 (red)	057-0461-11	M22520/1-01	057-0462-21	M22520/1-02	M15570-20 006-0902-20
26-30	0.055 - 0.15	006-0893-20 (red)	057-0463-12	M22520/2-01	057-0464-32	M22520/2-02	M15570-20 006-0902-20
20-24	0.25 - 0.6	006-0893-20 (red)	057-0461-11	M22520/1-01	057-0462-21	M22520/1-02	M15570-20 006-0902-20
20-24	0.25 - 0.6	006-0893-20 (red)	057-0461-11	M22520/1-01	057-0462-21	M22520/1-02	M15570-20 006-0902-20
20-24	0.25 - 0.6	006-0893-16 (blue)	057-0461-11	M22520/1-01	057-0462-21	M22520/1-02	M15570-20 006-0902-20
18-22	0.4 - 1	006-0893-20 (red)	057-0461-11	M22520/1-01	057-0462-21	M22520/1-02	M15570-20 006-0902-20
18-22	0.4 - 1	006-0893-20 (red)	057-0461-11	M22520/1-01	057-0462-21	M22520/1-02	M15570-20 006-0902-20
18-22	0.4 - 1	006-0893-20 (red)	057-0461-11	M22520/1-01	057-0462-21	M22520/1-02	M15570-20 006-0902-20
16-20	0.6 - 1.2	006-0893-16 (blue)	057-0461-11	M22520/1-01	057-0462-21	M22520/1-02	M15570-16 006-0902-16

Databus Contacts

DMC-M Series Contacts and Tooling / EN4165

Coax size 8

Active area / Mating Size	Part No.	Type	Color Bands	
			AS39029	EN3155
Microcoax	724-0004-16	P	Yellow-Red-Yellow	-
	724-0005-16	S	Yellow-Orange-Red	-
08 (Coax)	182-0125-08	P	-	-
	182-0126-08	S	-	-
08	182-0048-08	P	-	-
	182-0044-08	S	-	-

Quadrax size 8 (crimp)

Part No.	Type	Contact tooling		Sleeve tooling	
		Crimp Tool	Positioner	Crimp Tool	Die set
187-0204-08 A	P	M22520/2-01	K709	M22520/5-01	M22520/5-45B
187-0205-08 A	S				

Both Part No. are also available without sealing sleeve (Part No. are 187-0204-08 and 187-0205-08).
Wiring procedures NC187-0204-08 and NC187-0205-08.

Quadrax size 8 (PCB)

187-0206-08	P	Back mounting
-------------	---	---------------

Triax size 8

Databus Contacts (twisted Pair) As Per AS39029						Tooling for Databus Contacts			
Cable Type	Part No.	Type	Color Bands	Conductor Size Max.	Braid OD Max.	Sleeve Type	Center Conductor	Ferrule	Insertion/Extraction Tool
Single braid	182-0347-01	P	Brown-Red	2 x 0.34 mm ²	3.48	Thermoplastic and silicone	TDB-CT-08	TDB-CT-HEX Mark D	114-008 or M81969/14-06
	182-0346-01	S							
Double braid	182-0347-02	P	Red-Red	2 x 0.34 mm ²	3.91	Thermoplastic and silicone	TDB-CT-08	TDB-CT-HEX Mark D	114-008 or M81969/14-06
	182-0346-02	S							
Single Braid	182-0034-03	P	Brown-Red	2 x 0.34 mm ²	3.48	Thermoplastic and Silicone	TDB-CY-08	TDB-CT-HEX Mark C	114-008 or M81969/14-06
	182-0035-03	S							
Double Braid	182-0034-04	P	Red-Red	2 x 0.34 mm ²	3.91	Thermoplastic and Silicone	TDB-CT-08	TDB-CT-08HEX Mark D	114-008 or M81969/14-06
	182-0035-04	S							

Wiring procedures NC182-021 and NC187-013.

Databus Contacts

Wire Range		Crimp Tool		Positioner		Insertion/Extraction Tool
AWG	mm ²	Part No.	MIL Part No.	Part No.	MIL Part No.	
KX 22	0.057 - 0.158	057-0463-12 (Center Contact) 057-0509-14 (Outer Contact)	M22520/2-01 (Center Contact)	057-0539-32 (Center Contact) 057-0511-34 (Outer Contact)	-	M15570-16 006-0902-16
ALPEN A 26 DT	-	-	-	-	-	114-008 or M81969/14-06
SMA Interface	-	-	-	-	-	114-008 or M81969/14-06

Databus Contacts

DG/DTS Contacts and Tooling / MIL-DTL-38999/EN3645

Coax size 8

Part No.	Former Part No.	Type	Cable	Crimping of the inner contact		Crimping of the sleeve		Insertion/extraction tool
				Crimp Tool	Positioner	Crimp Tool	Positioner	
724-0004-16	-	P	RG 174 /	M22520/2-01	M22520/2-35	M22520/4-01	M22520/4-02	M15570-16 006-0902-16
724-0005-16	-	S	316 / 179	-	-	-	-	

Triax size 8

Databus Contacts (twisted Pair) As Per AS39029						Tooling for Databus Contacts			
Cable Type	Part No.	Type	Color Bands	Conductor Size Max.	Braid OD Max.	Sleeve Type	Center Conductor	Ferrule	Insertion/Extraction Tool
Single braid	182-0347-01	P	Brown-Red	2 x 0.34 mm ²	3.48	Thermoplastic and silicone	TDB-CT-08	TDB-CT-HEX Mark D	114-008 or M81969/14-06
	182-0346-01	S							
Double braid	182-0347-02	P	Red-Red	2 x 0.34 mm ²	3.91	Thermoplastic and silicone	TDB-CT-08	TDB-CT-HEX Mark D	114-008 or M81969/14-06
	182-0346-02	S							
Single Braid	182-0034-03	P	Brown-Red	2 x 0.34 mm ²	3.48	Thermoplastic and Silicone	TDB-CY-08	TDB-CT-HEX Mark C	114-008 or M81969/14-06
	182-0035-03	S							
Double Braid	182-0034-04	P	Red-Red	2 x 0.34 mm ²	3.91	Thermoplastic and Silicone	TDB-CT-08	TDB-CT-08HEX Mark D	114-008 or M81969/14-06
	182-0035-04	S							

Wiring procedures NC182-021 and NC187-013.

Quadrax size 8 (crimp)

Part No.	EN Ref	Type	Contact tooling		Sleeve tooling	
			Crimp Tool	Positioner	Crimp Tool	Die set
187-0204-08	-	P	M22520/2-01	K709	M22520/5-01	M22520/5-45B
187-0205-08	-	S				

Wiring procedures NC187-0204-08 and NC187-0205-08.

Quadrax size 8 (PCB)

Part No.	Type	Mounting type
187-0206-08	P	Back mounting

Databus Contacts

FAST Series Contacts and Tooling / EN3545

Quadrax

Contacts		Tooling				
Kit Part No. (Contact + Sleeve)	Type	Contact Crimp Tool	Contact Positioner	Sleeve Crimp Tool	Die set	Extraction Tool
182-0611-08	P	M22520/2-01	K709	M22520/5-01	M22520/5-45B	025-0711-06
182-0612-08	S					

Wiring procedures NC187-0108-08 and NC187-0109-08.

Quadrax size 8 (PCB)

Part No.	Type	Mounting type
182-0095-01	P	Front mounting with grounding tail
182-0095-06		
182-0095-21		
182-0095-26		
187-0178-08	P	Back mounting with grounding tail
182-0121-01	P	Front mounting without grounding tail
182-0121-06		
182-0121-21		
182-0121-26		
187-0136-08	S	Back mounting

Twinax size 8 (crimp)

Part No.	Type	Contact tooling		Sleeve tooling	
		Crimp Tool	Positioner	Crimp Tool	Die set
187-0157-08	P	M22520/2-01	K709	M22520/5-01	M22520/5-45B
187-0158-08	S				

Twinax size 8 (PCB)

Part No.	Type	Mounting type
187-0264-01	P	Front mounting
187-0264-06		
187-0265-01	S	Back mounting
187-0265-06		

Databus Contacts

FDBA/AFD/DFE Series Contacts and Tooling / EN3646 /MIL-DTL-26482

Quadrax size 8

Part No.	Type	Tools	
		For the inner contacts	For the body
187-0108-08	P	M22520/2-01 + K709	M22520/5-01 + M22520/5-45B
187-0109-08	S		

Wiring procedures NC187-0108-08 and NC187-0109-08.

Coax size 16

Crimping							
Part No.	Type	Cable	Contact	Crimp Tool	Positioner	Selector position	Insertion/extraction tool
025-0847-08	P	RG 196 A/U and RG	Inner	M22520/2-01	L22520-C3	5	M15570
025-0848-08	S	178 B/U	Outer	M22520/1-01	M22520/1-02	7	

Quadrax size 8 (PCB)

Part No.	Type	Mounting type
182-0121-01	P	Front mounting without grounding tail
182-0121-06		
182-0121-21		
182-0121-26		
187-0136-08	S	Back mounting

Twinax size 8 (PCB)

Part No.	Type	Mounting type
187-0264-01	P	Front mounting
187-0264-06		
187-0265-01	S	Back mounting
187-0265-06		

Databus Contacts

983 (200 °C) Series Contacts and Tooling / EN2997 (200 °C) / ESC10

Quadrax size 8 For arrangements 18-02, 20-04 and 28-06

Kit Part No. (Contact + Sleeve)	Type	Tools		
		For size 24 contacts	For contact body	Extraction tool
182-0611-08	P	M22520/2-01 + K709	M22520/5-01	025-0711-06
182-0612-08	S		M22520/5-45B	

Wiring procedures NC187-0108-08 and NC187-0109-08.

Quadrax size 8 (PCB)

Part No.	Type	Mounting type
187-0281-08	P	Back mounting

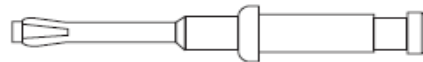
Databus Contacts

DBAS Series Contacts

Micro coax size 16



Female Contact

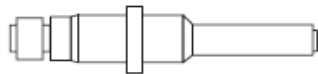


Male Contact

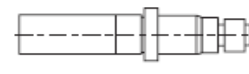
Contacts			Crimping			Tools
Coax wire used	Part No.	Type	Contact	Crimp Tool	Positioner	Wired contacts insertion/extraction tools
RG 196 A/U RG 178 B/U	025-0847-00	P	Inner Outer	057-0463-12 057-0461-11	057-0462-21	057-0517-32 006-0902-16
RG 196 A/U RG 178 B/U	025-0848-00	S	Inner Outer	057-0463-12 057-0461-11	057-0462-21	057-0517-32 006-0902-16

Wiring procedures NC 025-071.

Micro coax size 12



Male Contact



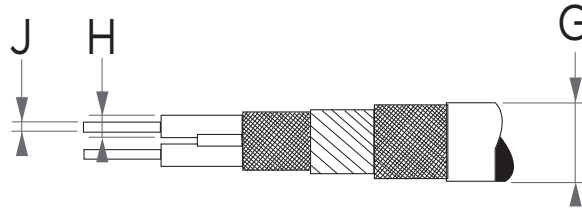
Female Contact

Coax wire used	Part No. P	Part No. S	Crimp Tool	Positioner	Sleeve Crimp Tool	Insertion/extraction tool
Shielded 24	006-1082-00	006-1080-00	057-0463-12	057-0524-32	057-0520-05	006-0902-12
RG 180 B RG 195 A	006-1089-00	006-1091-00	057-0463-12	057-0524-32	057-0520-05	006-0902-12
Shielded 24 RG 174 RG 188 A	006-1092-00	006-1093-00	057-0463-12	057-0524-32	057-0520-05	006-0902-12
Shielded 28-30 RG 178 B	006-1094-00	006-1095-00	057-0463-12	057-0524-32	057-0520-05	006-0902-12
RG 187 A RG 196 A	006-1097-00	006-1096-00	057-0463-12	057-0524-32	057-0520-05	006-0902-12
F 1703-66	006-1183-00	006-1184-00	057-0463-12	057-0524-32	057-0520-05	006-0902-12

Wiring procedures NC 025-041

Databus Contacts

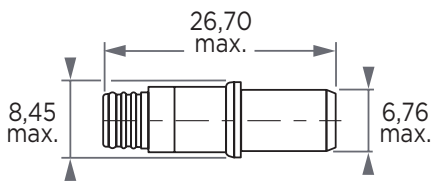
DBAS Series Contacts



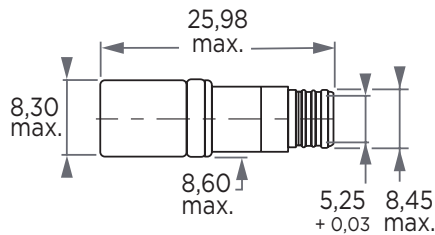
Coax size 6 bifilar

Cables				Contacts				Sealing plug			Tools		
Core				Contact Part No.				Ref.			Crimp Tool		
Cable Part No.	Size	G max	H max	J max	Index	P	S	For P and S	Color	Inner contact	Locator	Sleeve	Extraction tool
F 2709/9	22	4.80	1.68	0.80									
F 2709/12	20	5.35	2.03	1	without	025-0709-01	025-0710-01	025-0689-06	Blue	057-0463-12	057-0470-32	057-0088-00	025-0711-06
F 2709/3	24	4.05	1.37										
17/176-00002		2.59	1.12	0.60	M4	025-0925-00	025-0926-00	025-0689-06	Blue	057-0463-12	057-0470-32	057-0088-00	025-0711-06

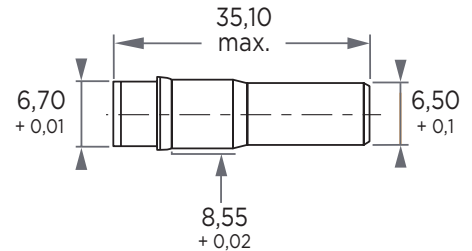
Wiring procedures NC 025-011



Male contact



Female Contact



Sealing plug

Coax size 8

Cables				Contacts				Crimp Tool			Insertion & Extraction Tools	
Cable Part No.	G max	H max	J max	Connector Index	Part No. P	Part No. S	Intermediary contact	Positioner	Sleeve	Insertion	Extraction	
RG 179/U RG 187/U	2.95	1.52	0.76	Without	005-0920-00	005-0921-00	057-0463-12	057-0513-32	057-0519-05	057-0519-05	006-0902-08	
RG 195/U	3.94	2.62	0.76	1	005-0919-00	005-0914-00	057-0463-12	057-0513-32	057-0518-05	006-0902-08	057-0616-60	
Specials	2.95	1.52	0.97	9	005-0913-00	005-0922-00	057-0463-12	057-0513-32	057-0519-05	006-0902-08	006-0902-08	
50 PPDT	3.90	2.00	0.70	F1	005-0065-00	005-0066-00	057-0463-12	057-0513-32	057-0518-05	006-0902-08	057-0616-60	
Double braid	5.50	3.04	0.97	F7	005-0983-00	005-0984-00	057-0463-12	057-0513-32	057-0520-05	006-0902-08	057-0616-60	
1709/33	2.85	1.75	0.70	F8	005-1364-00	005-1365-00	057-0463-12	057-0513-32	057-0518-05	006-0902-08	057-0616-60	
66856	4.20	3.00	0.97	F9	005-1445-00	005-1446-00	057-0463-12	057-0513-32	057-0518-05	006-0902-08	057-0616-60	

Dimensions in mm
Wiring procedures NC 025-011.

Databus Contacts

DS/DCI/901/941 Series Contacts and Tooling

Coax size 8

Cable	Index	Part No.	Former Syst. Part No.	Type
RG 174 U RG 178 B/U RG 187 A/U RG 188 A/U RG 196 A/U	standard	047-0894-00	0106-003-000	P
		047-0893-00	0107-003-000	S
RG 180 B/U RG 195 A/U	1	047-1026-00	800/33-1	P
		047-1027-00	800/34-1	S
RG 58 C/U RG 141 A/U RG 142 B/U RG 222 U	5	047-1026-02	0106-001-000	P
		047-1027-02	0107-001-000	S
50 PPTDE	F1	047-1026-01	DF 47-A-724-08-0056	P
		047-1027-01	DF 47-A-724-08-0056	S
KX2	F5	047-1026-03	DF 47-A-863-08-0056	P
		047-1027-03	DF 47-A-864-08-0056	S
50 PPTDE KX23	F6	047-1026-04	DF 47-A-083-00	P
		047-1027-04	DF 47-A-085-00	S
-	F7	047-1026-05	DF 47-A-099-00	P
		047-1027-05	DF 47-A-100-00	S
RG 122 U	F9	047-1026-06	DF 47-A-284-00	P
		047-1027-06	DF 47-A-285-00	S
-	F10	047-1026-07	DF 47-A-287-00	P
		047-1027-07	DF 47-A-288-00	S
CT 115	F11	047-1026-08	DF 47-A-199-00	P
		047-1027-08	DF 47-A-203-00	S
Special	12	047-1026-09	-	P
		047-1027-09	-	S
Special	9	047-1026-10	-	P
		047-1027-10	-	S
KX 53 A/S, RG59, KX 6 A/S, 75 PPN A/S	T2	047-1056-00	-	P
		047-1057-00	-	S
RG179, RG187	T1	047-1056-01	-	P
		047-1057-01	-	S
RG316, RG180	T3	047-1056-02	-	P
		047-1057-02	-	S
KX 53 A/S, RG59, KX 6 A/S, 75 PPN A/S	T4	047-1056-03	-	P
		047-1057-03	-	S

Wiring procedures NC 047-011 and 047-021.

Impedance	Crimping of the contact		Sleeve Crimp Tool	Rear insertion tool	Front insertion tool
	Crimp Tool	Positioner			
50 Ω	M22520/2-01	K30	M22520/5-01	M15513-25 DAK51-8	M15515-25 DRK51-8
50 Ω	M22520/2-01	K30	M22520/5-01	M15513-25 DAK51-8	M15515-25 DRK51-8
50 Ω	M22520/2-01	K30	M22520/5-01	M15513-25 DAK51-8	M15515-25 DRK51-8
50 Ω	M22520/2-01	K30	M22520/5-01	M15513-25 DAK51-8	M15515-25 DRK51-8
50 Ω	M22520/2-01	K30	M22520/5-01	M15513-25 DAK51-8	M15515-25 DRK51-8
50 Ω	M22520/2-01	K30	M22520/5-01	M15513-25 DAK51-8	M15515-25 DRK51-8
50 Ω	M22520/2-01	K30	M22520/5-01	M15513-25 DAK51-8	M15515-25 DRK51-8
50 Ω	M22520/2-01	K30	M22520/5-01	M15513-25 DAK51-8	M15515-25 DRK51-8
50 Ω	M22520/2-01	K30	M22520/5-01	M15513-25 DAK51-8	M15515-25 DRK51-8
50 Ω	M22520/2-01	K30	M22520/5-01	M15513-25 DAK51-8	M15515-25 DRK51-8
50 Ω	M22520/2-01	K30	M22520/5-01	M15513-25 DAK51-8	M15515-25 DRK51-8
50 Ω	M22520/2-01	K30	M22520/5-01	M15513-25 DAK51-8	M15515-25 DRK51-8
75 Ω	M22520/2-01	K30	M22520/5-01	M15513-25 DAK51-8	M15515-25 DRK51-8
75 Ω	M22520/2-01	K30	M22520/5-01	M15513-25 DAK51-8	M15515-25 DRK51-8
75 Ω	M22520/2-01	K30	M22520/5-01	M15513-25 DAK51-8	M15515-25 DRK51-8
75 Ω	M22520/2-01	K30	M22520/5-01	M15513-25 DAK51-8	M15515-25 DRK51-8

All Contacts References

Signal and Power

Reference	Page	Reference	Page	Reference	Page	Reference	Page
004-0159-16	26	006-1102-16 A	14, 18	018-0878-08	16	029-0102-22	34
004-0159-16 A	14, 18	006-1104-16	26	019-0857-22	16	029-0103-22	34
004-0160-16	26	006-1104-16 A	14, 18	019-1055-22	16	030-0044-22	26, 34
004-0160-16 A	14, 18	006-1157-12	26	020-0008-08	16	030-0076-22	26, 34
005-0257-08	14, 26	006-1157-12 A	14, 18	020-0008-12	16	038-0015-20	30
005-0258-08	14, 26	006-1159-12	26	020-0008-16	16	047-0893-08	32
005-0893-08	14, 26	006-1159-12 A	14, 18	020-0008-20	16	047-0893-12	32
005-0896-08	14, 26	006-1168-16	26	020-0511-12	16	047-0893-16	32
006-0040-08	14, 26	006-1168-16 A	14, 18	020-0511-16	16	047-0893-20	32
006-0041-08	14, 26	006-1169-16	26	020-0511-20	16	047-0894-08	32
006-0044-20	26	006-1169-16 A	14, 18	020-0511-22	16	047-0894-12	32
006-0044-20 A	14, 18, 36	006-1186-20	14, 18, 22, 26, 36	023-0025-16	34	047-0894-16	32
006-0055-20	26	006-1187-20	14, 18, 22, 26, 36	023-0032-16	34	047-0894-20	32
006-0055-20 A	14, 18, 36	006-1188-20	14, 18, 22, 26, 36	023-0040-16	34	047-1006-20	32
006-0912-12	26	006-1189-20	14, 18, 22, 26, 36	023-0139-16	34	047-1007-20	32
006-0912-12 A	14, 18	008-0100-20	28	023-0151-16	34	047-1008-20	32
006-0912-16	26	008-0101-20	28	023-0153-16	34	047-1009-20	32
006-0912-16 A	14, 18, 36	008-0161-20	28	025-0402-20	14, 18, 22, 26	047-1010-20	32
006-0912-20	26	008-0162-20	28	025-0403-20	14, 18, 22, 26	047-1011-20	32
006-0912-20 A	14, 18, 36	008-0208-20	28	025-0404-20	14, 18, 22, 26, 36	047-1013-20	32
006-0912-20 A-A834	14	008-0248-20	28	025-0405-20	14, 18, 22, 26, 36	047-1014-20	32
006-0937-12	26	008-0253-16	28	025-0406-20	14, 26, 36	047-1015-20	32
006-0937-12 A	14, 18	014-0091-20	30	025-0407-20	14, 26, 36	047-1016-20	32
006-0937-16	26	014-0092-20	30	025-0870-16	14, 18, 26, 36	047-1017-20	32
006-0937-16 A	14, 18, 36	014-1014-16	30	025-0871-16	14, 18, 26, 36	047-1022-12	32
006-0937-20	26	014-1014-20	30	028-0108-20	34	047-1022-16	32
006-0937-20 A	14, 18, 36	014-1015-20	30	028-0108-22	26, 34	047-1022-20	32
006-0937-20 A-A834	14	014-1016-16	30	028-0113-20	34	047-1023-12	32
006-0972-20	26	014-1018-20	30	028-0113-22	26, 34	047-1023-16	32
006-0972-20 A	14, 18, 36	014-1025-20	30	028-0131-22	26, 34	047-1023-20	32
006-0973-20	26	014-1026-20	30	028-0132-22	26, 34	047-1024-12	32
006-0973-20 A	14, 18, 36	014-1092-08	30	028-0139-22	26, 34	047-1024-16	32
006-0982-16	14, 18, 22	014-1094-08	30	028-0140-22	26, 34	047-1024-20	32
006-0983-16	14, 18, 22	018-0007-08	16	028-0174-16	34	047-1025-12	32
006-1060-20	14, 26, 36	018-0008-08	16	028-0176-16	34	047-1025-16	32
006-1062-20	14, 26, 36	018-0011-12	16	029-0100-22	34	047-1025-20	32
006-1102-16	26	018-0865-12	16	029-0101-22	34	047-1059-20	32

All Contacts References

Signal and Power

Reference	Page	Reference	Page	Reference	Page	Reference	Page
047-1325-08	32	097-0092-16	24	182-0441-12	8	703-0163-22	26, 34
047-1326-08	32	097-0093-16	24	182-0441-16	8	703-0164-22	26, 34
047-1329-08	32	097-0095-16	24	182-0441-20	8	703-0165-22	26, 34
047-1330-08	32	097-0096-16	24	182-0441-22	8	724-0001-08	6, 8, 10
047-1348-16	32	097-0097-16	24	182-0447-12	8	724-0001-12	6, 8, 10
047-1349-16	32	097-0165-12	22	182-0447-16	8	724-0001-16	6, 8, 10, 12
047-1401-12	32	097-0166-12	22	182-0447-20	8	724-0001-20	6, 8, 10
097-0004-16	32	097-0177-16	22	182-0447-22	8	724-0001-22	6, 8, 10, 12
097-0005-16	24	097-0178-16	22	182-0657-06	12	724-0001-24	6
097-0006-16	24	097-0184-08	24	182-0657-06 A	20	724-0003-08	6, 8, 10
097-0007-16	24	097-0187-08	24	182-0661-06	12	724-0003-12	6
097-0010-16	24	097-0236-12	10	182-0661-06 A	20	724-0003-16	6, 12
097-0011-16	24	097-0236-16	10	182-0664-06	12	724-0003-20	6
097-0013-16	24	097-0236-20	10	182-0664-06 A	20	724-0003-22	6, 12
097-0014-16	22	097-0287-22	18	182-0671-22	16	724-0003-24	6
097-0015-20	22	097-0288-22	18	182-0672-06	12	724-0007-12	8, 10
097-0016-20	22	123-0001-12	16	182-0672-08	12	724-0007-16	8, 10
097-0023-16	22	123-0001-16	16	182-0672-10	12	724-0007-20	8, 10
097-0024-16	24	123-0001-20	16	182-0700-06	12, 20	724-0007-22	8, 10
097-0025-16	24	123-0001-22	16	182-0701-06	12, 20	724-1063-12	6
097-0026-16	24	134-0068-16	28	182-0702-06	12, 20	724-1063-16	6, 12
097-0027-16	24	143-0003-16	30	182-0704-06	12	724-1063-20	6, 10
097-0028-16	24	143-0003-20	30	182-0704-08	12	724-1064-12	6
097-0032-16	24	143-0004-16	30	182-0704-10	12	724-1064-16	6, 12
097-0033-16	24	143-0004-20	30	182-0860-22	6	724-1064-20	6
097-0034-16	24	182-0001-08	6, 8	182-0862-22	6	724-1079-20	10
097-0036-16	24	182-0003-08	6, 8	182-0899-12	12	724-1105-20	8
097-0037-16	14, 18, 22	182-0009-20	8, 10	182-0899-20	12	724-1106-20	8
097-0047-20	14, 18, 22	182-0010-20	8, 10	182-0908-20	16	724-1272-22	6
097-0053-20	22	182-0068-20	8, 10	-	-	910 KP-16 A	28
097-0060-12	22	182-0069-20	8, 10	-	-	910 KP-16-0	28
097-0061-12	24	182-0118-20	12	-	-	910 KP-20 R	28
097-0062-04	24	182-0120-20	12	-	-	910 KP-20-0	28
097-0063-04	24	182-0393-08	6, 10	182-4042-23	6	910 KS-16 A	28
097-0064-00	24	182-0394-08	6, 10	182-4043-23	6	910 KS-16-0	28
097-0065-00	24	182-0439-16	16	182-4114-16	12	910 KS-20 R	28
097-0091-16	24	182-0439-20	16	703-0162-22	26, 34	910 KS-20-0	28

All Contacts References

Databus

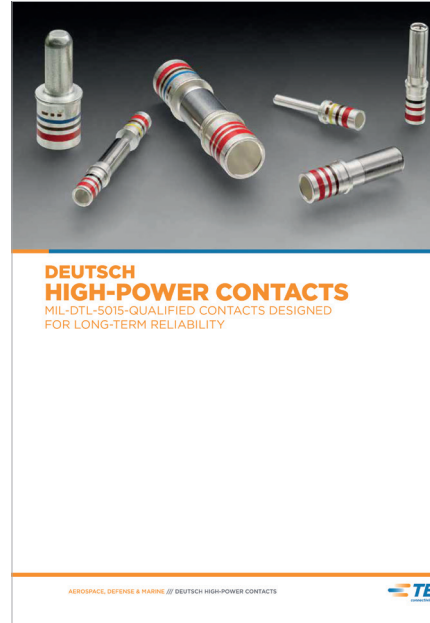
Reference	Page	Reference	Page	Reference	Page
005-0065-00	45	047-1026-01	46	182-0095-21	41
005-0066-00	45	047-1026-02	46	182-0095-26	41
005-0913-00	45	047-1026-03	46	182-0121-01	41, 42
005-0914-00	45	047-1026-04	46	182-0121-06	41, 42
005-0919-00	45	047-1026-05	46	182-0121-21	41, 42
005-0920-00	45	047-1026-06	46	182-0121-26	41, 42
005-0921-00	45	047-1026-07	46	182-0125-08	38
005-0922-00	45	047-1026-08	46	182-0126-08	38
005-0983-00	45	047-1026-09	46	182-0346-01	40
005-0984-00	45	047-1026-10	46	182-0346-02	40
005-1364-00	45	047-1027-00	46	182-0347-01	40
005-1365-00	45	047-1027-01	46	182-0347-02	40
005-1445-00	45	047-1027-02	46	182-0611-08	41, 43
005-1446-00	45	047-1027-03	46	182-0612-08	41, 43
006-1080-00	44	047-1027-04	46	187-0108-08	42
006-1082-00	44	047-1027-05	46	187-0109-08	42
006-1089-00	44	047-1027-06	46	187-0136-08	41, 42
006-1091-00	44	047-1027-07	46	187-0157-08	41
006-1092-00	44	047-1027-08	46	187-0158-08	41
006-1093-00	44	047-1027-09	46	187-0178-08	41
006-1094-00	44	047-1027-10	46	187-0204-08 A	38, 40
006-1095-00	44	047-1056-00	46	187-0205-08 A	38, 40
006-1096-00	44	047-1056-01	46	187-0206-08	38, 40
006-1097-00	44	047-1056-02	46	187-0264-01	41, 42
006-1183-00	44	047-1056-03	46	187-0264-06	41, 42
006-1184-00	44	047-1057-00	46	187-0265-01	41, 42
025-0709-01	45	047-1057-01	46	187-0265-06	41, 42
025-0710-01	45	047-1057-02	46	187-0281-08	43
025-0847-00	44	047-1057-03	46	724-0004-16	38, 40
025-0847-08	42	182-0034-03	38	724-0005-16	38, 40
025-0848-00	44	182-0034-04	38		
025-0848-08	42	182-0035-03	38		
025-0925-00	45	182-0035-04	38		
025-0926-00	45	182-0044-08	38		
047-0893-00	46	182-0048-08	38		
047-0894-00	46	182-0095-01	41		
047-1026-00	46	182-0095-06	41		

Other TE contacts brochures

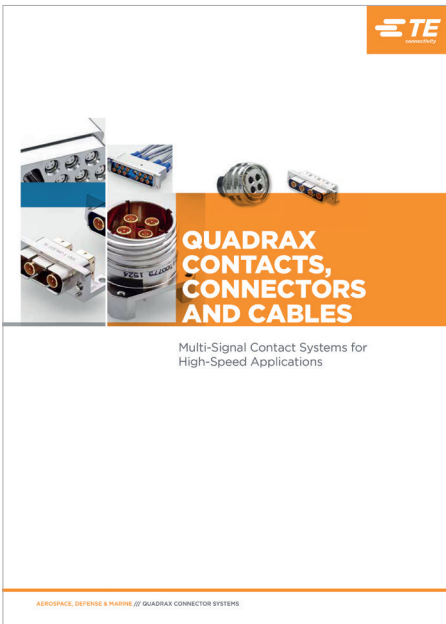
DEUTSCH QPL Contacts



DEUTSCH HIGH-POWER Contacts



QUADRAX Contacts, Connectors and Cables



LET'S CONNECT

We make it easy to connect with our experts and are ready to provide all the support you need. Just call your local support number or visit www.te.com/industrial to chat with a Product Information Specialist.

Technical Support

te.com/support-center

North America	+1 800 522 6752	Asia Pacific	+86 400 820 6015
North America (Toll)	+1 717 986 7777	Japan	044 844 8180
EMEA/South Africa	+800 0440 5100	Australia	+61 2 9554 2695
EMEA (Toll)	+31 73 624 6999	New Zealand	+64 (0) 9 634 4580
India (Toll-Free)	+800 440 5100		

Connect With Us

We make it easy to connect with our experts and are ready to provide all the support you need. Visit te.com/support to chat with a Product Information Specialist.

te.com/deutsch-solid-contacts

TE, TE Connectivity, TE connectivity (logo), DEUTSCH, AMP, AGASTAT, CII, HARTMAN, KILOVAC, MICRODOT, NANONICS, POLAMCO, Raychem, Rochester, SEACON Phoenix, SEACON, and EVERY CONNECTION COUNTS are trademarks owned or licensed by the TE Connectivity Ltd. family of companies. Other product names, logos, and company names mentioned herein may be trademarks of their respective owners.

The information given herein, including drawings, illustrations and schematics which are intended for illustration purposes only, is believed to be reliable. However, TE Connectivity makes no warranties as to its accuracy or completeness and disclaims any liability in connection with its use. TE Connectivity's obligations shall only be as set forth in TE Connectivity's Standard Terms and Conditions of Sale for this product and in no case will TE Connectivity be liable for any incidental, indirect or consequential damages arising out of the sale, resale, use or misuse of the product. Users of TE Connectivity products should make their own evaluation to determine the suitability of each such product for the specific application.

©2023 TE Connectivity. All Rights Reserved.

2339712-1 09/23