

## Introducing High Power Inverted Thru Board SMT Connector

The High Power Inverted Thru Board SMT Connector, available in 2, 3 and 4 positions, provides a means to bring power to LED aluminum clad boards from the underside of the printed circuit board. The mating Economy Power II (EP) plug connectors, based on a .156" [3.96mm] pitch, are rated for 600VAC up to 7A and accepts 22 - 18 AWG [0.34mm<sup>2</sup> to 0.75mm<sup>2</sup>] stranded wire sizes that are ideal for delivering power to printed circuit boards.

### KEY FEATURES

- Eliminates wire dress management issues with discrete wire leads around the top surface of LED printed circuit boards
- Available in 2, 3 and 4 Positions
- Accepts Economy Power II (EP II) mating connectors
- EP II connectors provide positive latching
- Low profile top surface height of 2.00mm above the LED printed circuit board
- Rounded corners to prevent shadowing
- Connector is positioned in cutout or notch in the printed circuit board
- Surface mount board locks provides stability during mating and unmating
- High temperature material for reflow soldering process
- Tape and reel packaging for high speed SMT processing
- Flat top surface allows for vacuum pick up
- EP II cable assemblies available upon request
- RoHS compliant

### APPLICATIONS

- Indoor and outdoor solid state lighting fixtures
- Solid state lighting modules and controls
- Industrial / commercial meters and controls

### MECHANICAL

- Operating Temperature: -30°C to +105° Temperature
- Meets 2.0mm creep and clearance design
- EP II Connectors accepts 22 - 18 AWG (0.34mm<sup>2</sup> - 0.75mm<sup>2</sup>) stranded wire

### ELECTRICAL

- Operating Current: 7A
- Operating Voltage: 600 VAC
- Dielectric Withstanding Voltage: 2200 VAC

### MATERIALS

- Housing: UL 94 V0 rated high temperature resistant thermoplastic
- Contacts: Tin over nickel plated copper alloy

### APPLICATIONS AND SPECIFICATIONS

- cUR approved to UL1977
- High Power Inverted Thru Board SMT Connector
  - Application Specification: [114-32030](#)
  - Product Specification: [108-133000](#)
- EP II Contacts and Connector
  - Application Specification: [114-13265](#)
  - Product Specification: [108-2297](#)

### APPLICATION TOOLING

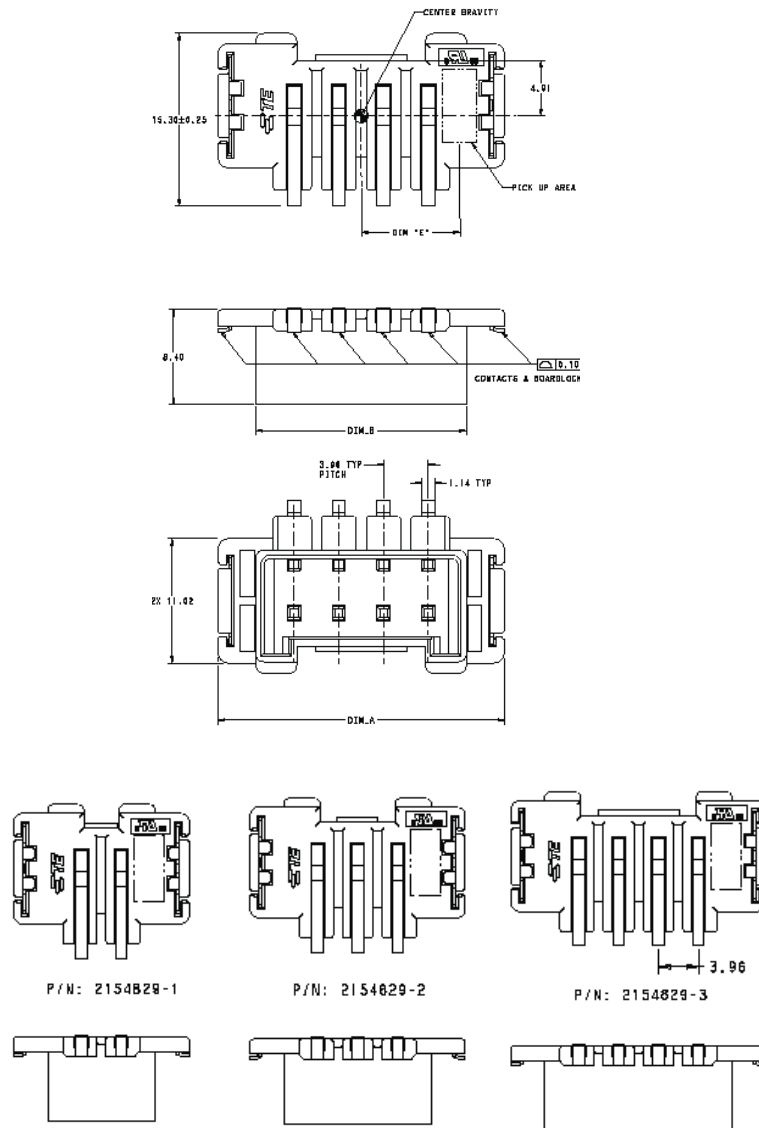
- EP II Contact Applicator: [1385286-1, -2 or -3](#)



PRODUCT OFFERING

ITB Connector P/N	POSN	Dim. A	Dim. B	Dim. C	Dim. D	Dim. E	EP II Plug Cable Assy P/Ns
2154829-1	2	25.3	18.6	19	12.04	8.73	2154828-1
2154829-2	3	21.34	14.64	15	10.06	6.75	2154828-2
2154829-3	4	17.38	10.68	11	8.08	4.77	2154828-3

PRODUCT DIMENSIONS



Dimensions are shown for reference purposes only. Specifications subject to change. Customer drawing should be used for all design activity.

