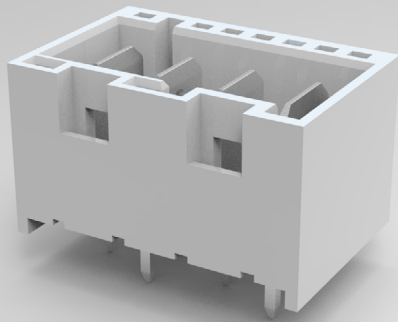


NEXT GENERATION RAST 5.0 HIGH RETENTION HEADER

HIGH RETENTION FORCE HEADERS FIT FOR PCB ASSEMBLY AUTOMATION

The next generation RAST 5.0 high retention header offers a secure connection with customizable features to meet application specific requirements. During assembly, printed circuit board (PCB) tabs are inserted in these headers from the top-down, as compared to traditional bottom-up tab assembly, which provides greater retention force and supports easier assembly. They are available in potted or standard versions and in tube or bulk packaging to meet a range of assembly needs. Applications for the next generation RAST 5.0 high retention header include front-loading washing machines, air-conditioners and small home appliances.



ELECTRICAL

- Rated Current: 20A
- Rated Voltage
 - Full Loading: 400V AC
 - Selective Loading: 600V AC
- Insulation Resistance: 5000MΩ
- Dielectric Strength: 3000V/m

MECHANICAL

- Centerline (mm): 5
- Configuration: Vertical Through Hole
- Number of Positions
 - Potted Version: 2-4
 - Standard Version: 2-7

MATERIALS

- Operating Temperature (°C): -40 to +120
- Housing Flammability Ratings: UL 94 V-0 and IEC 60335-1 GWT* 750°C
- Contact: Copper Alloy, Tin plating over Nickel

FEATURES

- High retention force with top-down loaded PCB tabs
- Available in potted or standard versions
- Multiple color and keying options meeting RAST standards
- Available in bulk or tub packaging

ADDITIONAL INFORMATION

- Product Specificaton: [108-106080](#)
- Product Pages:
 - [RAST Headers Product Page](#)
 - [RAST Connector System Product Page](#)

PRODUCT COMPLIANCE/CERTIFICATION

- UL & VDE approval

APPLICATIONS



Front-loading washing machine



Air conditioner



Small home appliance

*For more information on glow wire testing please review the white paper [Glow Wire Testing for the Appliance Industry](#) or visit the [Glow Wire Capable Connectors product page](#).

NEXT GENERATION RAST 5.0 HIGH RETENTION HEADER

PARTS

Base Part Number	Position	Potted/Standard	Tab Loaded	Package	Pattern
2390868	2P	Potted	Fully	Bulk	Standard
	3P				
	4P				
2390869	2P	Potted	Fully	Bulk	Opposite
2390874	2P	Standard	Fully	Bulk	Standard
	4P				
2390877	3P	Standard	Selectively	Bulk	Standard
	5P				
	7P				
2392771	2P	Standard	Fully	Tube	Opposite
	3P				
	6P				
2392784	2P	Standard	Fully	Tube	Standard
	5P				

te.com

© 2024 TE Connectivity. All Rights Reserved.

TE Connectivity, TE and TE connectivity (logo) are trademarks owned or licensed the TE Connectivity Ltd. family of companies.

While TE has made every reasonable effort to ensure the accuracy of the information in this brochure, TE does not guarantee that it is error-free, nor does TE make any other representation, warranty or guarantee that the information is accurate, correct, reliable or current. TE reserves the right to make any adjustments to the information contained herein at any time without notice. TE expressly disclaims all implied warranties regarding the information contained herein, including, but not limited to, any implied warranties of merchantability or fitness for a particular purpose. The dimensions in this catalog are for reference purposes only and are subject to change without notice. Specifications are subject to change without notice. Consult TE for the latest dimensions and design specifications.

01/24