



# CM-10T ELECTRIC PRESS FIT MACHINE

---

Product Brochure

---

# CM-10T ELECTRIC PRESS FIT MACHINE

TE Connectivity's (TE) new CM-10T press fit machine was designed to apply compliant pin connectors to a wide range of PCBs and built with a rigid "H" frame to minimize deflection. It is fully capable of handling demanding applications from daughter cards to mid-planes to backplanes.

The machine features a touch screen monitor for enhanced machine operation, an air table option that assists the operator when positioning product under the press head, and an optional bar code scanner, which provides fast PCB serial number entry. An air bearing system provides effortless press head positioning. The PCB capacity is 760 x 900 mm (30 x 36 in). The statistical process control feature within the machine's included software provides a press log and in addition, allows press force plotting for every connector.

TE's field service engineers are available worldwide in the major regions and countries. There is a wide range of insertion tools available for these machines for both TE and non-TE products allowing customizations available to meet your production requirements. Together with our global manufacturing footprint, we can offer the quality, reliability and trust to meet your next project's needs.



**Optimized High-Performance Tool**



**Quality and Control Management**



**Customizable**

Key Features	Benefits
Optimized High-Performance Tool	<ul style="list-style-type: none"> <li>Familiar windows 10 operating system closely monitoring force, distance, and speed</li> <li>Built with a rigid "H" frame to minimize deflection</li> <li>Touch screen monitor for enhanced machine operation</li> <li>Air table assists the operator when positioning product under the press head</li> <li>Optional bar code scanner, which provides fast PCB serial number entry</li> </ul>
Quality and Control Management	<ul style="list-style-type: none"> <li>Manually adjust the press head and/or the PCB between connector press cycles</li> <li>An air bearing system provides effortless press head positioning</li> <li>PCB capacity of the CM-10T press is 760 x 900 mm (30 x 36 in)</li> <li>The statistical process control (SPC) feature within the machine's included software provides a press log and in addition, allows press force plotting for every connector</li> </ul>
Customizable	<ul style="list-style-type: none"> <li>Customized MES software to meet customer requirements</li> <li>Upper press fit tooling available for TE and non-TE connectors</li> </ul>
Support	<ul style="list-style-type: none"> <li>Our machines are supported by an established, experienced and responsive field service organization</li> <li>Field engineers are located worldwide and are available to assist with on-site and remote service; selection and installation of new equipment; training; and technical support</li> </ul>

## Industries

- Data Communications
- 5G

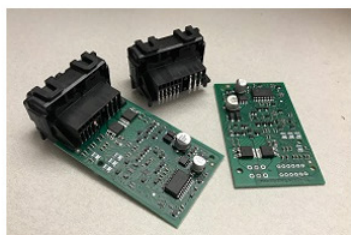
## Applications

- Data Centers
  - Servers
  - Switching & Routing
  - Storage
- Machine Learning and Inference System

## Technical Details

Technical Specifications	CM-10T
Voltage	380C AC 3P
Footprint L x W x H mm	1150 x 1050 x 1950
Press Head Movement	Manual Linear Bearing
R Axis	Servo Motor
Operating System	Windows 10
Error F.S.	0.50%
Position Accuracy	±0.01mm
Board Size Capacity mm	915 x 760
SPC	Yes

## Connector Seating Product Applications



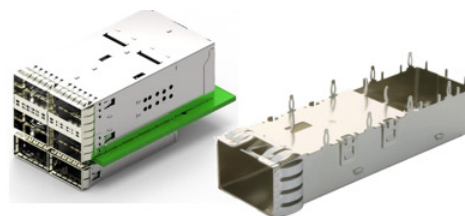
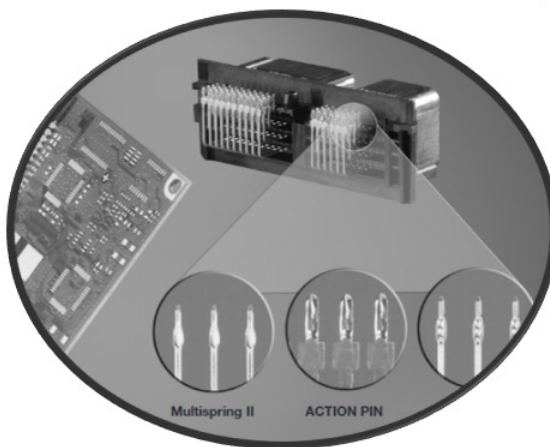
Auto Hybrid Connectors



Z-PACK 2mm HM Connectors



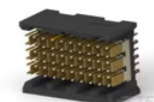
Power Connectors



SFP Cage Types: SFP-DD, SFP28, SFP56, SFP+, zSFP+



STRADA Whisper Connectors and Cable Assemblies



Board-to-Board Connector

## Ordering Information

Specifications	
PN 2428580-1	CM-10T, SERVO ELECTRIC PRESS

---

## Connect With Us

Our tooling is supported by an established, experienced and responsive field service organization. TE Connectivity field engineers are located worldwide and are available to assist with on-site and remote service; selection and installation of new equipment; training; and technical support. Service agreements are available to provide protection and support for all your application tooling equipment.

### Contact Us

Phone: Americas 1-800-722-1111

EMEA 49-6151-607-1518

APAC 86-021-3325-9030

Tooling Portfolio: [tooling.te.com](https://tooling.te.com)

Field Service: [te.com/fieldservice](https://te.com/fieldservice)

---

## te.com

TE Connectivity, TE Connectivity (logo) and Every Connection Counts are trademarks. All other logos, products and/or company names referred to herein might be trademarks of their respective owners.

The information given herein, including drawings, illustrations and schematics which are intended for illustration purposes only, is believed to be reliable. However, TE Connectivity makes no warranties as to its accuracy or completeness and disclaims any liability in connection with its use. TE Connectivity's obligations shall only be as set forth in TE Connectivity's Standard Terms and Conditions of Sale for this product and in no case will TE Connectivity be liable for any incidental, indirect or consequential damages arising out of the sale, resale, use or misuse of the product. Users of TE Connectivity products should make their own evaluation to determine the suitability of each such product for the specific application.

©2023 TE Connectivity. All Rights Reserved.

05/23 Original