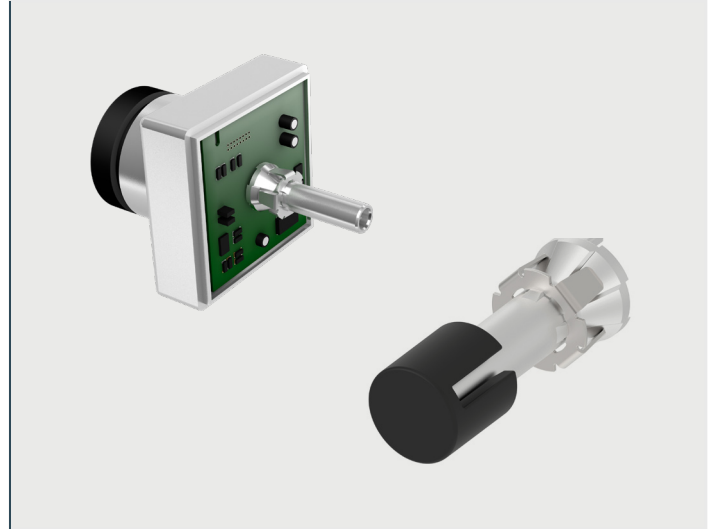


INTRODUCING COAXIAL CAMERA CONNECTORS

- Support up to 6 GHz performance, designed for all current and next generation automotive coaxial SerDes protocols
- Broadband connectivity to support beyond 8-12 megapixel / 60 frames per second



A growth in the development of ADAS and automated driving technologies is leading to an increase in the number of camera applications, which include surround view, lane departure warning, adaptive cruise control, blind spot recognition and smart cameras that recognize the environment. TE Connectivity (TE) innovative broadband coaxial connector portfolio is precisely tailored to the requirements of next-generation automotive camera systems.

Based on TE's MATE-AX and FAKRA connector interfaces, the fixed and floating camera connection solutions offer a misalignment compensation of +/- 0.5 mm in all dimensions and a sealing rating of IP6K9K. In addition, with up to 6 GHz bandwidth, TE's camera connector solutions can support advanced cameras with 12 megapixels / 60fps and beyond.

KEY BENEFITS

AUTOMOTIVE-GRADE ROBUSTNESS

- Portfolio of floating and fixed header solutions
- Single and multi-PCB support
- High-level of misalignment compensation: +/- 0.5 mm in all directions for floating solutions
- Highly compact design
- Protection degree: IP69K

HIGH PERFORMANCE

- Support up to 6 GHz performance, designed for all current and next generation automotive coaxial SerDes protocols
- Broadband connectivity capable of 12 MP @ 60 fps and beyond

APPLICATIONS

- Rear view cameras
- Lane departure warning
- Park assist
- Surround view cameras
- Multiple contact point design
- Adaptive cruise control
- Driver monitoring
- Night vision cameras

SUPPORTED PROTOCOLS

- FPD-LINK III/IV
- GMSL 2/3
- MIPI
- ASA
- GVIF

LEARN MORE

- [Automotive Coaxial Camera Connectors Landing Page](#)
- [Automotive Coaxial Camera Connectors Brochure](#)