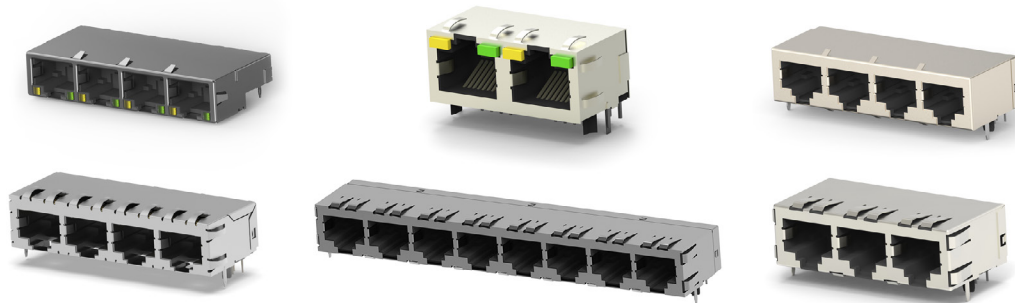





MULTI-PORT MODULAR JACKS

MULTI-PORT MODULAR JACKS



Product Facts

- Addresses FCC Part 68 rules and regulations with standard printed circuit board (PCB) footprints
- Low profile and narrow width allow more ports to be packed into less space
- Unshielded and shielded versions in popular size configurations
- Positive connection throughout life of equipment with insert molded contacts
- Accurately positioned solder tails reduce assembly labor while selectively deposited gold plating results in lower cost
- Center mounting leg available on 8 port shielded and unshielded versions
- Available with two grounding paths; PCB & panel
- Listed by Underwriters Laboratories Inc., File No. E81956 
- Certified by Canadian Standards Association, File No. LR 7189A 
- Produced under a quality management system certified to ISO 9001
 - A copy of the certificate is available upon request

Specifications

Electrical

- Current rating: 1.5 amp max. @ 25°C
- Voltage rating: 150 VAC max. Contact to Contact
- Dielectric withstanding voltage: 1000 VAC
- Insulation resistance: 500 megaohms min.
- Shielding effectiveness: 20dB min., 10 to 200 MHz

Mechanical

- Durability: 750 mating cycles
- Mating/unmating forces: 5 lbs. max.
- Operating temperature: 40°C to 70°C

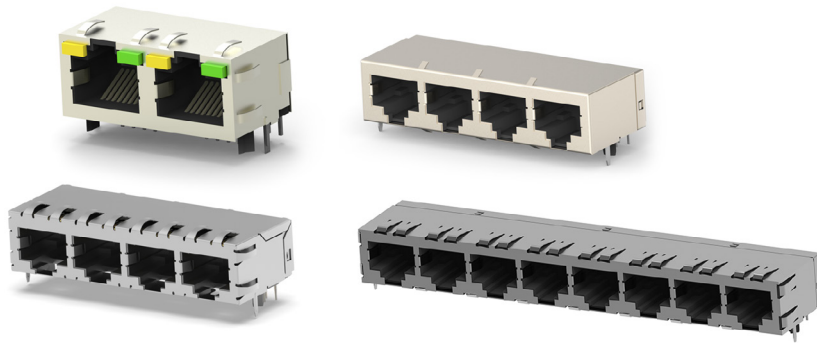
Material and Finish

- Housing: high temperature nylon, black UL 94V-0 rated
- Contact: .013 [0.33] phosphor bronze; plated .000050 [0.00127] gold in localized area and .000150 [0.00381] tin-lead on solder tails, over .000050 [0.00127] nickel underplate
- Shield: .010 [0.25] or .0077 [0.20] copper alloy tin-lead plated

Technical Documents

- Application specifications: 114-02048
- Product specifications: 108-01163

Side Entry, Right Angle, Thru-Hole



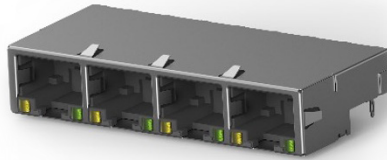
Number of Ports	Part number	Profile	Positions / connects	LEDs	Shielded	Performance	Panel stops	Inverted	Grounding options
1 x 2	1734479-4*	Low	6/4	Without	No	Cat 3	Without	Yes	Without
1 x 2	6116353-1	Standard	8/8	With	Yes	Cat 5	Without	Yes	PCB and panel
1 x 2	1-1734697-2	Standard	8/8	Without	Yes	Cat 3	Without	No	PCB and panel
1 x 2	5406443-1	Standard	8/8	Without	Yes	Cat 5	Without	No	PCB
1 x 2	5406562-1	Standard	8/8	Without	Yes	Cat 4	Without	No	PCB and panel
1 x 2	5406562-2	Standard	8/8	Without	Yes	Cat 4	Without	No	PCB and panel
1 x 2	5406566-1	Standard	8/8	Without	Yes	Cat 5	Without	No	PCB and panel
1 x 2	5406566-2	Standard	8/8	Without	Yes	Cat 5	Without	No	PCB and panel
1 x 2	5557560-1	Standard	8/8	Without	No	Cat 4	Without	No	Without
1 x 2	6368120-1	Standard	8/8	Without	No	Cat 5	Without	No	Without
1 x 2	6368419-1	Standard	8/8	With	Yes	Cat 5	Without	Yes	PCB and panel
1 x 3	5557561-1	Standard	8/8	Without	No	Cat 3	Without	No	Without
1 x 3	5569350-1	Low	8/8	Without	No	Cat 5e	Without	No	Without
1 x 4	1734714-2	Standard	8/8	Without	Yes	Cat 3	Without	No	PCB
1 x 4	1932371-1	Standard	8/8	Without	No	Cat 5	Without	No	Without
1 x 4	5406203-3	Standard	8/8	Without	Yes	Cat 5	Without	No	PCB and panel
1 x 4	5406275-2	Standard	8/8	Without	Yes	Cat 5	Without	No	PCB and panel
1 x 4	5406275-3	Standard	8/8	Without	Yes	Cat 5	Without	No	PCB and panel
1 x 4	5406281-3	Standard	8/8	Without	Yes	Cat 5	Without	No	PCB and panel
1 x 4	5406552-1	Standard	8/8	With	Yes	Cat 5	Without	Yes	PCB and panel
1 x 4	5406552-4	Standard	8/8	With	Yes	Cat 5	Without	Yes	PCB and panel
1 x 4	5557562-1	Standard	8/8	Without	No	Cat 3	Without	No	Without
1 x 4	5558503-1	Standard	8/8	Without	Yes	Cat 5e	Without	No	PCB
1 x 4	5558524-1	Standard	8/8	Without	Yes	Cat 5e	With	No	PCB and panel
1 x 4	6339167-2	Standard	8/8	Without	Yes	Cat 5	Without	No	PCB and panel
1 x 4	6339167-3	Standard	8/8	Without	Yes	Cat 5	Without	No	PCB and panel

* The type of 1734479-4 is RJ11.

Side Entry, Right Angle, Thru-Hole (Continued)

Number of Ports	Part number	Profile	Positions / connects	LEDs	Shielded	Performance	Panel stops	Inverted	Grounding options
1 x 5	5557563-1	Standard	8/8	Without	No	Cat 3	Without	No	Without
1 x 6	5406206-1	Standard	8/8	Without	Yes	Cat 5e	Without	No	Without
1 x 6	5406206-2	Standard	8/8	Without	Yes	Cat 5e	Without	No	PCB and panel
1 x 6	5557564-1	Standard	8/8	Without	No	Cat 3	Without	No	Without
1 x 6	5557572-1	Standard	8/8	Without	Yes	Cat 3	Without	No	PCB
1 x 6	5557572-3	Standard	8/8	Without	Yes	Cat 3	Without	No	PCB and panel
1 x 6	5558501-1	Standard	8/8	Without	No	Cat 5	Without	No	Without
1 x 6	5558525-1	Standard	8/8	Without	Yes	Cat 5	Without	No	PCB and panel
1 x 8	5406491-1	Standard	8/8	Without	Yes	Cat 5e	Without	No	PCB and panel
1 x 8	5557566-1	Standard	8/8	Without	No	Cat 3	Without	No	Without
1 x 8	5558505-1	Standard	8/8	Without	Yes	Cat 5e	Without	No	PCB
1 x 8	6339169-3	Standard	8/8	Without	Yes	Cat 5	Without	No	PCB and panel

Side Entry, Right Angle, Press-Fit

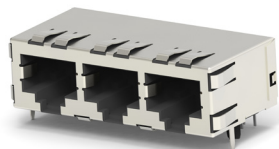


Number of Ports	Part number	Profile	Positions / connects	LEDs	Shielded	Performance	Panel stops	Inverted	Grounding options
1 x 4	1888251-1	Low	8/8	With	Yes	Cat 5	Without	No	PCB and panel
1 x 4	1888251-2	Low	8/8	With	Yes	Cat 5	Without	No	PCB and panel
1 x 4	1888251-3	Low	8/8	Without	Yes	Cat 5	Without	No	PCB and panel
1 x 4	1888251-4	Low	8/8	With	Yes	Cat 5	Without	No	PCB and panel

Side Entry, Right Angle, Thru-Hole (Combination RJ11/RJ45)

Number of Ports	Part number	Profile	Positions / connects	LEDs	Shielded	Performance	Panel stops	Inverted	Grounding options
1 x 2	2-1734712-2	Low	6,8/6,8	With	Yes	Cat 3	Without	Yes	PCB

Side Entry, Right Angle, Surface Mount Technology (SMT)



Number of Ports	Part number	Profile	Positions / connects	LEDs	Shielded	Performance	Panel stops	Inverted	Grounding options
1 x 2	5406903-1**	Standard	6/12	Without	No	Cat 3	Without	No	Without
1 x 3	1761825-1	Standard	8/8	Without	Yes	Cat 3	Without	No	PCB

** The type of 5406903-1 is RJ25.

Connect With Us

We make it easy to connect with our experts and are ready to provide all the support you need. Visit te.com/support to chat with a Product Information Specialist.

te.com

TE, TE Connectivity, TE connectivity (logo), and EVERY CONNECTION COUNTS are trademarks owned or licensed by the TE Connectivity Ltd. family of companies. Other product names, logos, and company names mentioned herein may be trademarks of their respective owners.

The information given herein, including drawings, illustrations and schematics which are intended for illustration purposes only, is believed to be reliable. However, TE Connectivity makes no warranties as to its accuracy or completeness and disclaims any liability in connection with its use. TE Connectivity's obligations shall only be as set forth in TE Connectivity's Standard Terms and Conditions of Sale for this product and in no case will TE Connectivity be liable for any incidental, indirect or consequential damages arising out of the sale, resale, use or misuse of the product. Users of TE Connectivity products should make their own evaluation to determine the suitability of each such product for the specific application.

©2024 TE Connectivity. All Rights Reserved.

07-24