



IC CON SLIM POWER PIN & SOCKET PORTFOLIO

TE Connectivity's new IC CON slim power pin and socket products can offer scalable design options and space savings for efficient installation in applications up to 35A. These new products do not require tools to install or remove the IC CON Slim products while also accommodating PIP (pin in paste) reflow processes. Scalable design options provide a variety of position options including 4pos, 6pos, 8pos. Available in an orthogonal application with soldering mounting. The compact design provides a low-profile enabling space savings.

APPLICATIONS

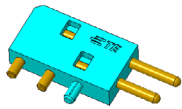
- Switches
- Servers
- Storage Devices
- Wireless

KEY BENEFITS

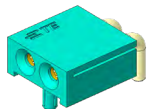
- Scalable design options provide a variety of positions options 4pos, 6pos, 8pos; orthogonal application; soldering mounting; 35A/pin
- Ease of installation alleviates the requirement of tools to install or remove the IC CON Slim products. They also accommodate PIP (pin in paste) reflow process
- Space Savings - The compact design provides a low-profile enabling space savings

PRODUCT FEATURES

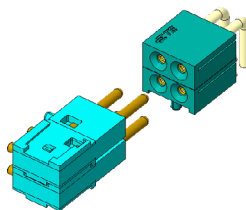
- Right angle pin mates with right angle socket. For orthogonal application.
- Current capacity: up to 35A
- Plug pin and socket can solder mount onto PCB
- Fit for PIP process



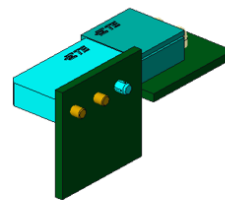
ORTHOGONAL
SOCKET



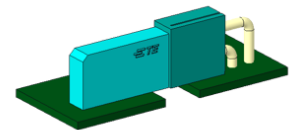
RIGHT ANGLE
PIN



STACKED:
4PIN, 6PIN, 8PIN



BOARD-TO-BOARD
(ORTHOGONAL)



BOARD-TO-BOARD
(COPLANAR)

ICCON SLIM POWER PIN & SOCKET PORTFOLIO

| Description | Pin Size (MM) | Mounting Type | Application Type | TE Part Number |
|-----------------------------|---------------|---------------|------------------|----------------|
| ICCON slim pin | 2.4 | Soldering | Board-to-Board | 1-2367215-1 |
| ICCON slim socket | 2.4 | Soldering | Board-to-Board | 1-2367216-2 |
| ICCON slim cable socket | 2.4 | Screw | Board-to-Board | 2372900-1 |
| ICCON slim dual pole pin | 2.4 | Soldering | Board-to-Board | 2379341-1 |
| ICCON slim dual pole socket | 2.4 | Soldering | Board-to-Board | 2379348-1 |

te.com

TE Connectivity, TE connectivity (logo) and EVERY CONNECTION COUNTS are trademarks owned or licensed by the TE Connectivity Ltd. family of companies. All other logos, products and/or company names referred to herein might be trademarks of their respective owners.

While TE has made every reasonable effort to ensure the accuracy of the information in this brochure, TE does not guarantee that it is error-free, nor does TE make any other representation, warranty or guarantee that the information is accurate, correct, reliable or current. TE reserves the right to make any adjustments to the information contained herein at any time without notice. TE expressly disclaims all implied warranties regarding the information contained herein, including, but not limited to, any implied warranties of merchantability or fitness for a particular purpose. The dimensions in this catalog are for reference purposes only and are subject to change without notice. Specifications are subject to change without notice. Consult TE for the latest dimensions and design specifications.

© 2022 TE Connectivity. All Rights Reserved.

09/22