

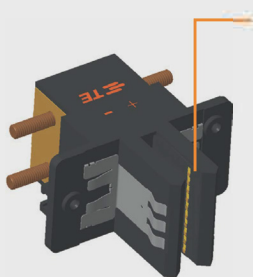
ENABLING NEXT-GEN POWER ARCHITECTURES

The power shelf in a data center rack is not only key to powering the vertical busbar, but also everything else within the rack. For Open Rack V3, the 48V architecture demands an output connector that can handle 1000A. TE Connectivity's (TE) dual-pole BB1000 range of connectors provide customers with the flexibility to distribute 1000A (500A per pole) using either welded cable assemblies or bolted down flexible busbar and cable assemblies.

TE's Open Rack V3 BB1000 connector offers:

- 1000A+ current capacity
 - 500A Load + 500A Return in 300 LFM @ 45°C
- Inherent product floating capability
 - Panel float makes mounting process forgiving
 - +/- 3.0mm panel float in X and Y axes
- Chamfers on mating edge for gatherability
 - Allows flexibility in mating with rack busbar
 - +/- 6.4mm misalignment
- Integrated housing chassis contacts
 - Offers grounding to the rack busbar cage
 - 64A max. for 2 mins in still air (32A per contact)

Full Compliance with all Open Rack V3 requirements

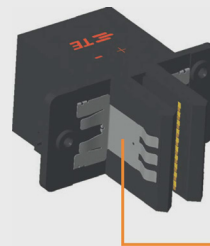


Overlapped and interlaced contact design for maximizing energy density

Screw-Mounting Type

- Terminable to:
- Flexible busbar
 - Cabled lugs
 - Rigid busbar

Also available as part of a busbar assembly solution



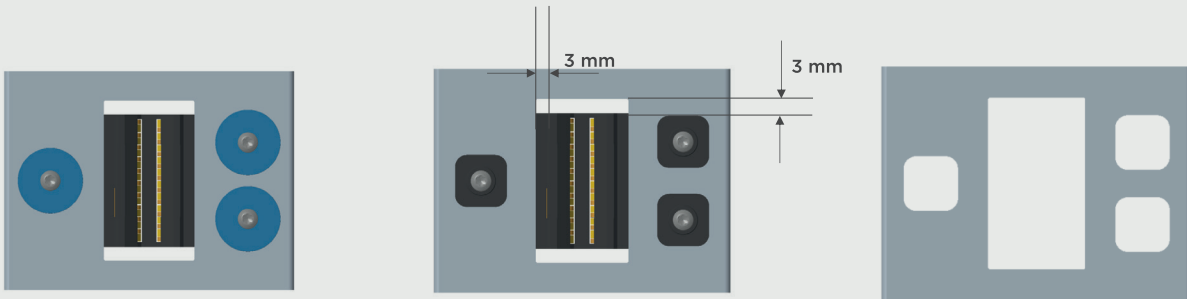
Cable-Attached Type

- Back-end allows for welded cable termination
- Offered as a customized cable assembly solution

Chassis ground contact

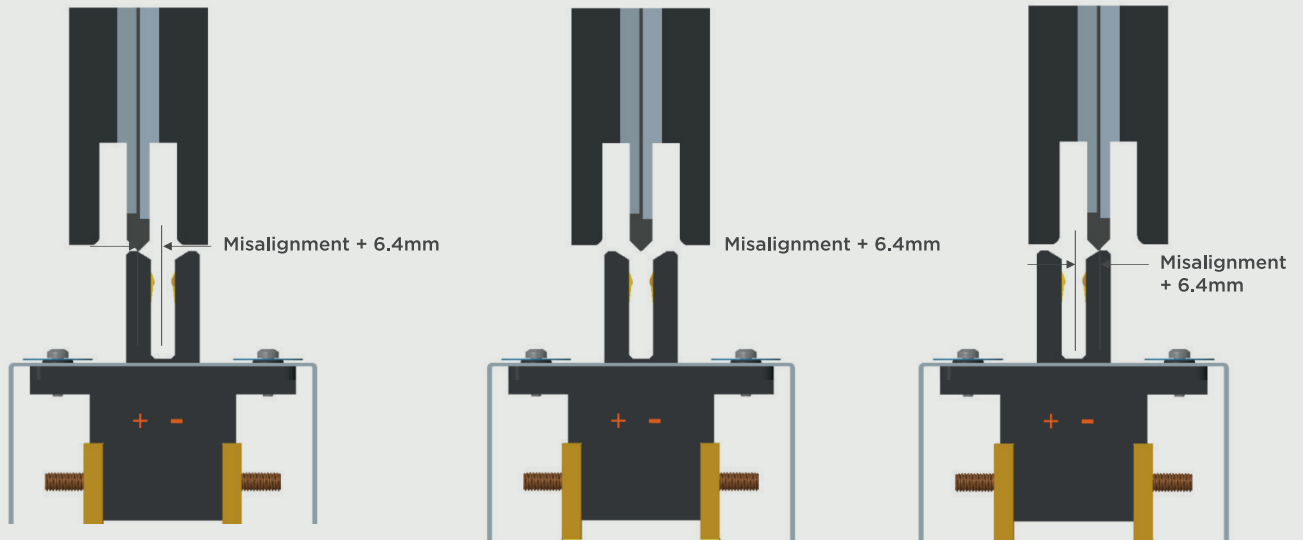
TE BB1000 Floating Capability

Product Floating Capability ± 3 mm

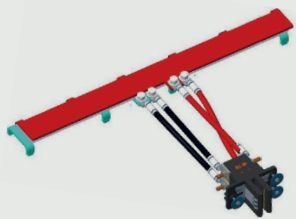


TE BB1000 Gathering Ability

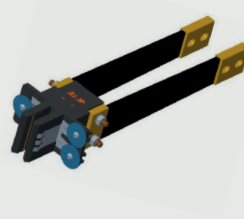
Product Gathering Ability ± 6.4 mm side to side.



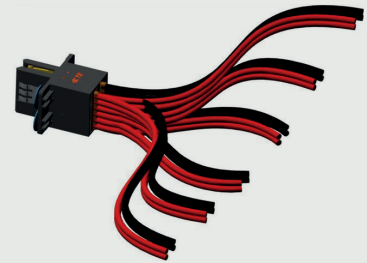
Power Shelf: 48V Output Connector Assemblies



Horizontal Rigid Busbar Assembly



Flexible Busbar Assembly



Cable Assembly