

JIFFY SPLICE

QUICK & EASY REPAIRS

TE Connectivity's (TE) Jiffy Splice for DEUTSCH contacts offers a unique single terminal solution, which is designed to protect connections from dirt, dust, and water immersion up to 1 meter. Used in harsh environments, such as the construction, mining, marine, and agricultural industries, Jiffy Splice is easy to install and help quickly repair damaged electrical connections on equipment at the jobsite.



JS-16-00

- Accepts size 16 DEUTSCH contacts
- Rated at 13 amps continuous at +125C
- 14-20 AWG [2.0-0.5 mm²] wire range
- .100-.134 [2.54-3.40 mm] insulation



JS-12-00

- Accepts size 12 DEUTSCH contacts
- Rated at 25 amps continuous at +125C
- 12-14 AWG [3.0-2.0 mm²] wire range
- .134-170 [3.40-4.32 mm] insulation



Jiffy Splice accepts one Pin and one Socket



ENVIRONMENTALLY SEALED



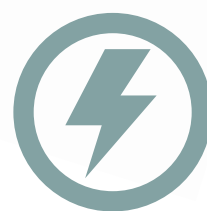
REUSABLE



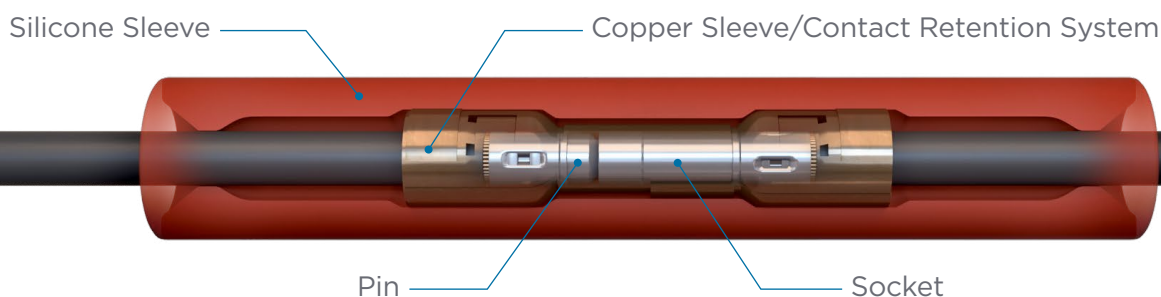
FIELD SERVICEABLE



-55 TO +125C TEMPERATURE



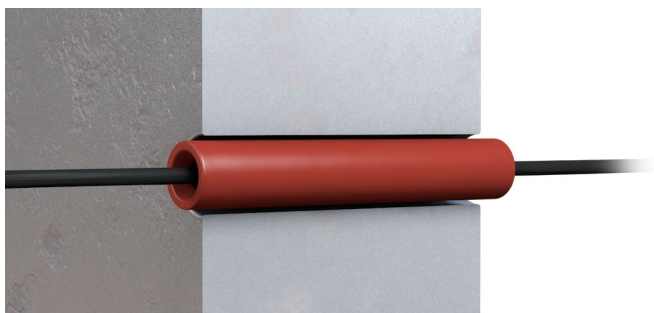
250 VDC



POSSIBLE APPLICATIONS

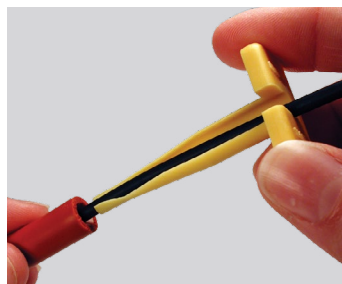


Quickly repair damaged electrical connections

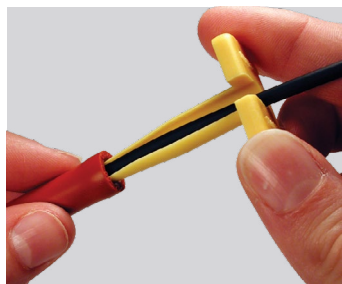


Easy connection point in tight spaces.

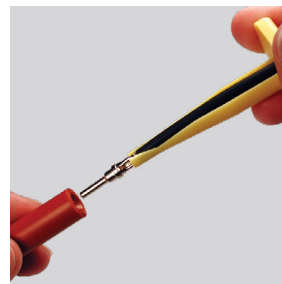
FIELD SERVICEABLE



STEP 1:
Snap appropriate size removal tool over the wire.



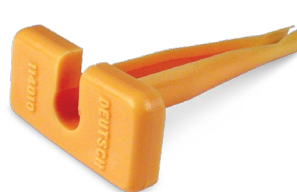
STEP 2:
Hold Jiffy Splice between thumb and forefinger approximately one half inch behind cavity. Slide tool into cavity until resistance is felt and retaining fingers are engaged. Do not twist or insert tool at an angle.



STEP 3:
Grip Jiffy Splice between thumb and forefinger and slowly pull contact wire assembly with removal tool out of cavity.



SIZE 16 REMOVAL TOOL
0411-310-1605



SIZE 12 REMOVAL TOOL
114010

LEARN MORE ON TE.COM

